

Dechant urges trade with poor nations

COLLEGE STATION, Tex. — Those who would like to see a significant expansion of U.S. farm exports should focus on measures which will improve the purchasing power of people in less developed nations

rather than to concentrate on trade liberalization tactics, NFU President Tony T. Dechant has told the National Farm Summit at Texas A&M University. Most of the recent grains in U.S. farm trade have been

due to growth in purchasing power and demand, rather than through liberalization of trade barriers or dismantling the domestic farm support programs of other nations, Dechant said. Also president of the Inter-



Tony Dechant

national Federation of Agricultural Producers, Dechant contended that the export gains of the past two decades have had little or nothing to do with attempts to undercut world prices and take away markets from farmers of the other countries. "It was the 'pull' of economic demand which brought our farm products into Japan, Western Europe, and other markets rather than our efforts to penetrate markets through price cutting."

The development of a new

international wheat agreement to lift world wheat prices at least to \$4.00 a bushel would be in the best interests of producers and consumers here and elsewhere, Dechant claims. "It makes no sense for the export countries to sell their grains at clearance

prices," he said. "We could add a dollar a bushel to the prevailing prices of corn, wheat, and soybeans without losing any appreciable market volume and, in the bargain, improve our agricultural trade balance by four to five billion dollars a year."

TB testing

(Continued from Page 1)

the Bureau of Animal Industry does not permit complete state-wide testing at one time, and therefore, initial testing will be in high tuberculosis risk areas. Plans are to test all Pennsylvania dairy herds during the next three years.

The Bureau of Animal Industry conducted a complete tuberculosis testing program in seven counties last year. This method of surveillance, plus

surveillance at federal inspection slaughter plants is essential to the control and eventual eradication of the disease.

Over 4,000 Pennsylvania dairy herd owners have their herds tested annually (at their expense) as an important part of the tuberculosis eradication program. Herds tested under his plan are accredited as tuberculosis-free. No other state has as many farmers participating in this "Individual Plan."

Summit

(Continued from Page 1)

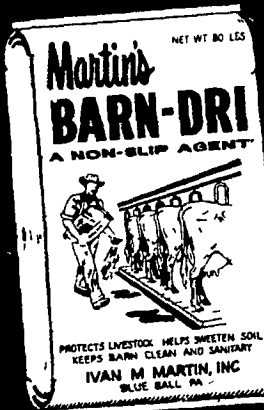
the development of a Washington D.C. based forum which would serve to bring together all of the major farm and commodity groups and other groups within the food system to discuss policy issues on a continuing basis. This recommendation came from a task force report on "Agriculture's Role In Government Decisions" chaired by Dr. John Kramer, Associate Dean of Georgetown University Law Center.

The packed sessions included lively give and take discussions among a diverse

group which has never assembled for these purposes. Participation ranged from individual farmers to top officials of major agribusiness companies, economists and university administrators, farm and commodity organizations, the banking community, major U.S. trading partners, and spokesmen for Congress, the White House and U.S. Department of Agriculture.

Other reports on the Summit's activities and conclusions may be found elsewhere in this edition of Lancaster Farming.

Protects livestock



keeps barns clean & sanitary

MARTIN'S BARN-DRI

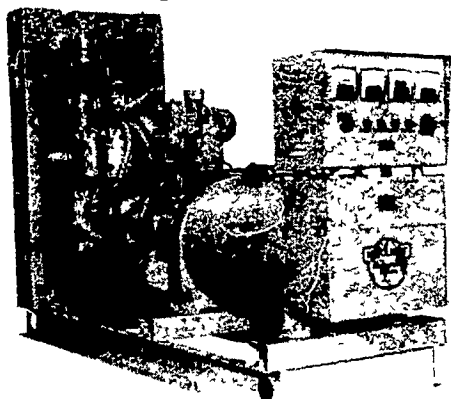
Use in any stable or animal pen that has a tendency to become slippery when wet.

- Cow Stables and Runways
- Hog Pens
- Sheep Stables
- Dog and Cat Kennels
- Chicken Houses
- Other damp areas

See your local dealer.

MARTIN LIVESTONE INC.

Nature supplies our Power . . . Most of the Time! Katolight Standby Power Systems.



Nature has been good to us. It has managed to keep pace with our ever increasing energy demands. But recently our energy needs seem to be outstripping nature's supply. Now we have to reckon with the by-product of this dilemma. . . . temporary electrical interruptions.

That's why KATOLIGHT CORPORATION is here. We've been a leader in Agricultural Standby Power for over 25 years. At the inception of KATOLIGHT, an electrical outage was little more than an inconvenience to be coped with. Today it's different. Loss of power on today's farm can spell disaster to livestock and

productivity. To protect themselves, many farmers utilize KATOLIGHT Agri-Alternators or CEP Engine-Alternator Sets.

We can't always count on nature, but you can count on KATOLIGHT. We'll analyze your setup, figure its needs for the future and match the proper Agri-Alternator or CEP Engine-Alternator Set to it. In addition, KATOLIGHT backs each of its units with local service and a sound warranty. Next to nature, our Standby Power Systems are probably the most dependable source of power you can have. Don't let nature interrupt the power you need. Call or write for further details.



KATOLIGHT MEANS QUALITY



HERSHEY EQUIPMENT COMPANY, INC.

SYCAMORE IND. PARK
255 PLANE TREE DRIVE
LANCASTER, PA 17603
(717) 393-5807

Route 30 West
at the
Centerville Exit

Designers of Quality Systems for Poultry, Swine and Grain Handling

→ NOW! ←
EARLY PURCHASE PERIOD
AND WINTER APPLICATION

Corn Starter Fertilizer -

Prem. Grades - with Mg.S.
Other minor elements added on request
December Prices

Pre-Payment incentives

Your money works all winter
Dec. payment earns the most
You take delivery in season

Pesticides: Anything for corn.

Early prices avail.

Limestone: Field spread.

Apply: Ammonia & P & K this winter.

OPEN MON. THRU FRI. 7:30 to 4:30 - SAT. TILL NOON



ORGANIC PLANT FOOD CO.

2313 NORMAN ROAD, LANCASTER, PA.
PHONE: 717-397-5152