

Livestock market and auction news

Pa. Auction Summary

of 14 Livestock

Auction Market Reports
December 15, 1978

CATTLE 4731. Compared to 5322 last week and 8026 a year ago. Compared with last week's market, slaughter steers steady to \$1.00 higher. Slaughter heifers steady to 2.00 higher. Slaughter cows mostly steady to 50 cents higher. Slaughter bulls unevenly steady. High Choice & Prime YG 3-4. Slaughter steers 57.00-59.25. Choice YG 2-4 55.00-58.75. Good 51.00-55.00, Standard 49.00-52.00, few Utility 45.00-50.00. Choice slaughter heifers 51.00-55.00, few 56.50, good 48.00-53.75, Standard 44.00-50.00, few Utility 40.00-48.00. Utility & Commercial slaughter cows 41.00-46.50, commercial cutters 39.00-44.00. Canner & L. Cutter 35.00-40.50, Shells down to 30.00. Few Choice slaughter bullocks 58.25-59.85, Good 50.00-57.50, few Standard 44.00-50.00. Yield Grade #1, 1000-2200 lbs. 48.75-57.50, few Yield Grade #2, 900-1600 lbs. 44.00-49.25.

FEEDER CATTLE: Choice 300-750 lbs. steers 60.00-70.00, Good & choice 300-800 lbs. 55.00-65.00. Good & choice 300-750 lbs. heifers 48.00-61.00. Good & choice 300-900 lbs. bulls 50.00-68.00.

CALVES 3648. Compared to 3887 last week and 5161 a year ago. Vealers steady to \$3.00 higher. Prime vealers 95.00-117.00, Choice 80.00-98.00, Good 72.00-85.00, Standard & Good 90-120 lbs. 65.00-75.00, 70-90 lbs. 55.00-65.00, Utility 50-110 lbs. 40.00-60.00.

FARM CALVES: Very active. Holstein bulls 90-120 lbs. 68.00-100.00. Holstein heifers 85-140 lbs. 68.00-130.00.

HOGS 6411. Compared to 7806 last week and 7702 a year ago. Barrows and gilts

strong to \$1.50 higher. US No. 1-2 200-240 lbs. barrows & gilts 52.00-53.50, No. 1-3 200-250 lbs. 50.50-52.50, No. 2-3 190-270 lbs. 48.00-50.50. No. 1-3 140-190 lbs. 40.00-49.00. SOWS weak to \$2.00 lower. US No. 1-3 300-600 lbs. sows 38.00-44.50, No. 2-3 300-700 lbs. 35.00-41.00. BOARS 32.00-38.00.

FEEDER PIGS 1626. Compared to 1873 last week and 2167 a year ago. Steady to \$3.00 lower. US No. 1-3 20-35 lbs. feeder pigs 19.00-37.00 per head, No. 1-3 35-50 lbs. 32.00-50.00, No. 1-3 50-75 lbs. 40.00-61.00. GRADED FEEDER PIGS 2381. ALL SALES CWT. Compared with 3386 head last week, and 1345 head a year ago. Feeder pigs grading 1-2, \$2.00-6.00 lower, 2-3 15.00-21.00 lower. US No. 1-2 25-40 lbs. 98.00-122.00, 40-50 lbs. 94.00-122.00, 50-65 lbs. 82.00-100.00; US No. 2-3 25-40 lbs. 76.00-97.00, 40-60 lbs. 61.00-85.00.

SHEEP 399. Compared to 374 last week and 696 a year ago. Woolled slaughter lambs mostly steady to \$1.00 higher. Choice 60-120 lbs. 58.00-69.00, few 79.00, Good 50-110 lbs. 45.00-62.00. Slaughter ewes 12.00-30.00.

Middleburg Auction

Middleburg, Pa.
December 12, 1978

CATTLE 195. Compared with last Tuesday's market, slaughter cows steady to 50 cents lower. Few Good to Low Choice slaughter steers 51.00-55.00, Standard 49.00-52.25, couple to 54.00, few Utility 45.50-48.00. Few Standard slaughter heifers 47.00-49.50, few Utility 40.25-45.75. Utility & Commercial slaughter cows 41.00-45.60, couple to 46.60, Cutters 40.00-43.00, Canner & Low Cutter 36.50-40.85, Shells down to

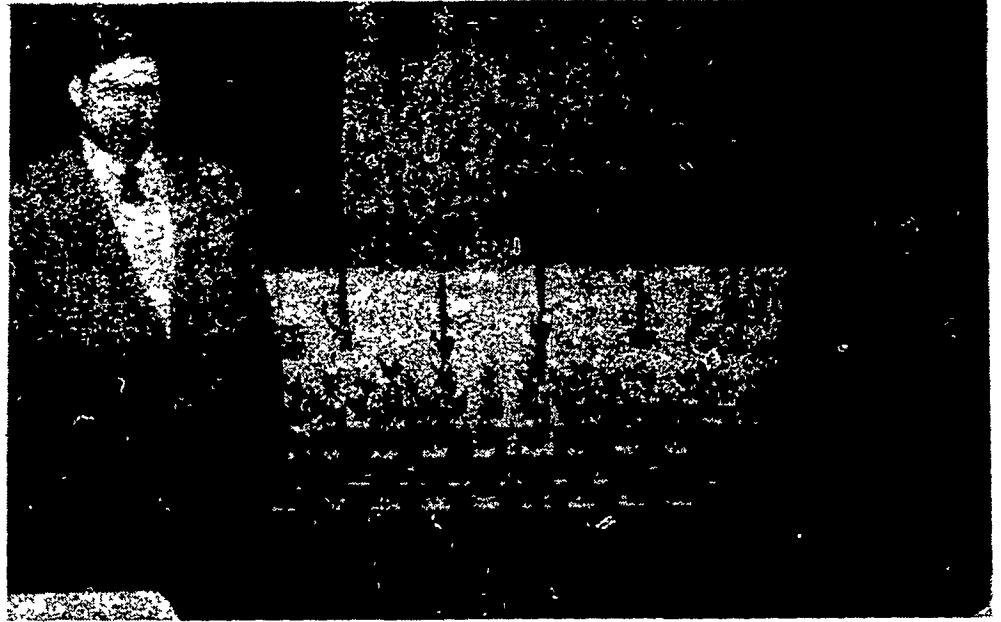
32.00. Couple Good slaughter bullocks 54.75 and 55.00, few Utility 46.75-52.50. Yield Grade #1 1150-1850 lbs. slaughter bulls 49.85-55.60. Few Good 350-600 lbs. feeder steers & bulls 56.00-68.00; few Good & Choice 400-700 lbs. feeder heifers 53.00-60.00.

CALVES 161. Vealers \$2 to \$3 higher. Couple Prime vealers 98.00, Choice 86.00-95.00, Good 75.00-85.00, Standard & Good 90-110 lbs. 66.00-70.00, 70-85 lbs. 54.00-66.00, Utility 50-110 lbs. 40.00-50.00. Farm calves, holstein bulls 85-120 lbs. 60.0-96.00; holstein heifers 80-150 lbs. 66.00-121.00.

HOGS 623. Barrows & gilts \$1.75 to \$2.25 higher. (TUESDAY HOGS 76). US No. 1-2 200-230 lbs. barrows & gilts 52.00-53.85, No. 1-3 190-250 lbs. 51.00-52.00, No. 2-3 200-270 lbs. 49.00-51.00. US No. 1-3 300-600 lbs. sows 38.50-42.50. Few Boars 35.00-38.50.

FEEDER PIGS 520. US No. 1-3 12-15 lbs. feeder pigs 15.00-19.00 per head, No. 1-3 20-35 lbs. 23.00-37.00, No. 1-3 35-50 lbs. 34.00-51.00, No. 1-3 50-65 lbs. 47.00-61.00, Utility 25-50 lbs. 20.00-43.00 per head.

SHEEP 4. Few Choice 80-90 lbs. woolled slaughter lambs 55.50-58.00.



Wayne Moree, left, general manager of Hy-Cross, and Frank M. Loew, Jr., sales manager, presented 57 awards to Lancaster County poultry producers last week. (See Story Page 36)

MASTER-MATIC SILO SYSTEM




FICKES SILO COMPANY, INC.

NEWVILLE, PENNA. 17241

Please send information on Fickes Master-Matic Silo System and Silage Master Silos

Fickes Silo Company Inc.

P. O. Box 7
Newville, PA 17241
Phone - 717-776-3129



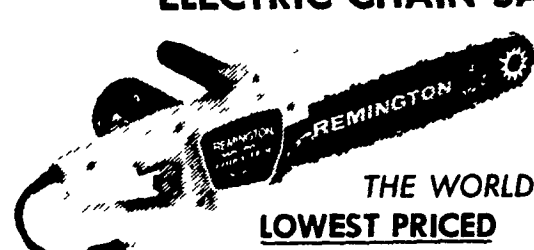
Trailers well worth their cost

Please send me information on: Fickes Silos
 Please send me color catalog on the Cherokee horse stock trailers and GN flatbeds.

Name _____
Address _____
City _____ State _____ Zip _____
Phone _____

NEW 14" ELECTRIC

REMINGTON SUPER DELUXE LIMB N' TRIM 14 ELECTRIC CHAIN SAW



THE WORLD'S LOWEST PRICED LIGHTEST WEIGHT

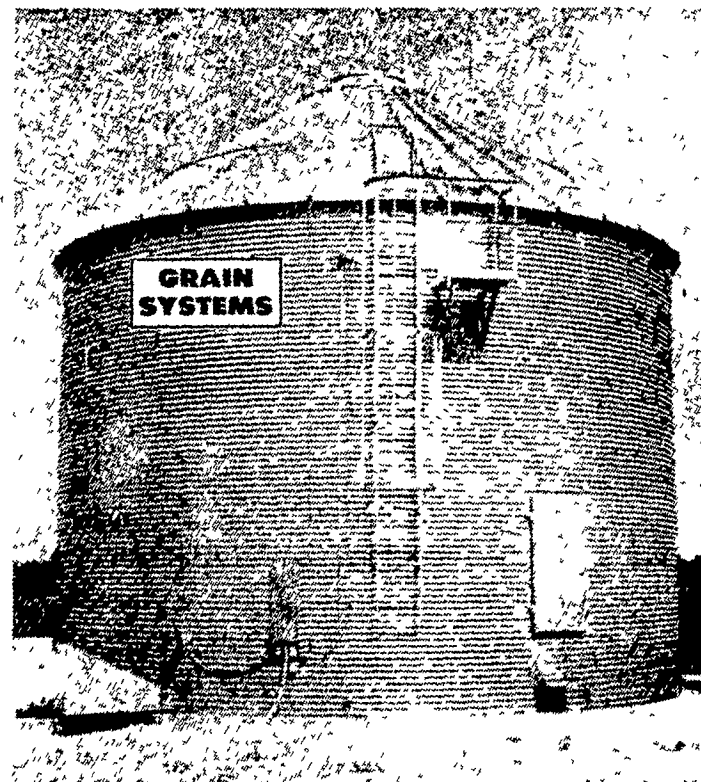
14" ELECTRIC CHAIN SAW

- BIG 14" SPROCKET NOSE GUIDE BAR CUTS TREES UP TO 28" THICK
- COMFORT CUSHION HAND GRIP
- HIGH PERFORMANCE 2 HP MOTOR
- DOUBLE INSULATED
- SAFETY TRIGGER LOCK
- UL APPROVED

Ernest B. Clauser
FARM MACHINERY SERVICE
SUCCESSOR TO BENJ. W. CLAUSER
RT. 2 BOX 682, WESCOSVILLE, PA.
LOCATED ON RUPPSVILLE ROAD
Phone: (215) 395-2542

THE SYSTEMS PEOPLE

THE MOST VERSATILE GRAIN DRYING, CONVEYING AND STORAGE



WE STOCK

- GRAIN BINS
- FEED BINS
- PORTABLE AUGERS
- VERTICAL AUGERS
- TRANSPORT AUGERS
- U TROUGH AUGERS
- FLEX AUGERS
- AUGER FEEDERS
- GRAIN DRYERS
- AERATION FANS
- GRAIN SCATTERS
- CHANNEL LOCK FLOOR
- BIN SWEEPS
- PIPE SPOUTING
- MOISTURE TESTER
- MOTORS, BELTS & PULLEYS
- GRAIN CLEANERS

A GSI ON-FARM STORAGE SYSTEM.

FEATURING:

- All galvanized steel with G-90 galvanized coating, including galvanized doors.
- Our steel is A446 Quality or a minimum yield of 40,000 pounds per square inch.
- Walk around steps on top of roof.
- Equipped with safety rings.
- No welding anywhere on roof, prevents rust.
- Slotted holes to raise & lower roof for air movement for drying.

NOW!

TAKE ADVANTAGE OF EARLY ORDER DISCOUNTS PLUS . . .

YEAR END 10% TAX CREDIT.

EMHERR

EQUIPMENT, INC.
RD3, Sprecher Road
Willow Street, PA
Lancaster Co
717-464-3321

WE SELL, SERVICE AND INSTALL FULL LINE PARTS DEPARTMENT