

INVENTORY REDUCTION SALE

NEW & USED EQUIPMENT



USED MILKING EQUIPMENT

Kesco dumping station w/auto. washer
Zero 200 vacuum pump
(2) DeLaval pipelines, complete, 1 1/2"
(4) Kesco dumping stations
(2) Surge 30 vacuum pumps
(2) DeLaval 50 vacuum pumps
Auto. Kesco w/washer
(2) Surge 1 1/2" line Around-the-Barn pipeline
Surge 6 side-opening parlor
2" Bou-Matic pipeline system
Several 25 to 35 CFM Vac. Suppliers

USED MILK TANKS

(3) 300 Gal. Girtons
400 Gal. Girton
500 Gal. Girton
400 Gal. Jamesway
500 Gal. Mojonnier
600 Gal. Mojonnier
500 Gal. Wilson
1250 Gal. Mueller
1000 Gal. Girton
500 Gal. Milkeeper

USED LIQUID MANURE EQUIPMENT

Husky 12' pumps
Husky 1875 gal. Spreader
Husky 1250 gal. Spreader
(2) Slurry Gun pumps
Ram Pump, like new
Husky 3160 Spreader

NEW TANKS IN STOCK

500 & 600 Gal. Milkeepers
500, 600 & 800 Gal. Girtons



COMPLETE PLANNING, INSTALLATION & SERVICE

YOUR EASTERN DISTRIBUTORS FOR
BETTER-BILT LIQUID MANURE EQUIPMENT

BETTER-BILT VACUUM
& AUGERMATIC SPREADERS

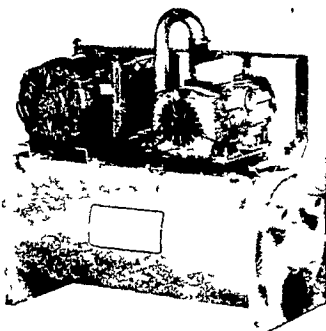


1500 GAL.
2100 GAL.
2600 GAL.
3150 GAL.



★ LAGOON PUMPS ★
★ HIGH PRESSURE PUMPS ★

LOOK!



NEW BOU-MATIC
VACUUM PUMPS

READY TO GO
40-50-60-75-80-CFM
95-110-120-CFM

LOOK

WHAT BOU-MATIC HAS
TO OFFER FOR
THE DAIRYMAN

- Around-the-Barn Pipeline Systems
- Automated Herringbones
- Automated Carousels
- Automated Polygons
- Crowding Gates
- Stimulation Stalls
- Milkers
- Automatic Detachers
- Vacuum Pumps
- Bulk Tanks
- Pipeline Washers
- Pre-Coolers
- Automated Side Opening Stalls
- Plate Cooler
- Tube Cooler

FULL LINE OF
DAIRY DETERGENTS AND
WASHING DETERGENTS

• PLANNING LAYOUTS • SALES • INSTALLATION • SERVICE

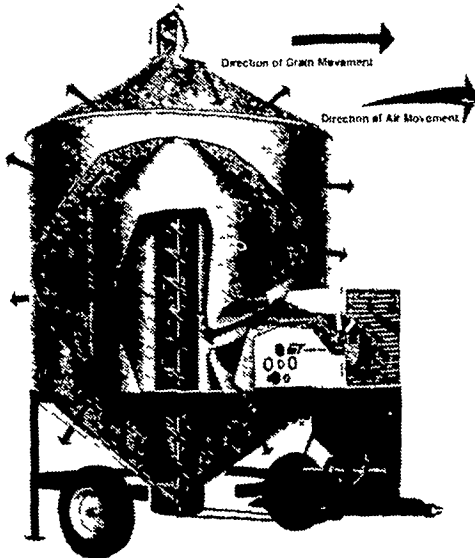
SHENK'S FARM SERVICE



501 E. WOODS DRIVE LITITZ, PA. 17543 PHONE: 717-626-1151
Bulk Tanks & Therma•Stor — After 5 P.M. — Call Titus Burkholder - 717-859-1620
After Business Hours - Phone: Curtis Cassady 717-626-1065. Paul Repine - 717-626-2837 or Mervin Nissley - 717-872-4565.
OUR SERVICE TRUCKS ARE RADIO DISPATCHED 24 HR. SERVICE OFFERED

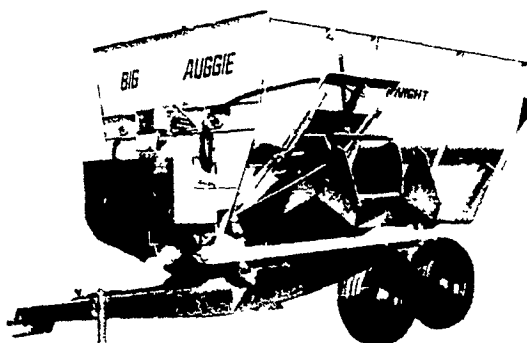
GT TOX-O-WIK

MODEL 370 DRYER



PRICED
TO
SELL ...
ONLY
ONE
LEFT ...
CALL
NOW!

SILAGE MIXING WAGONS ARTWAY AUGGIE



A GOOD
BUY

LITTLE AUGGIE 9
170 cu. ft. cap., In Stock

ALSO
AVAILABLE

★ BIG AUGGIE 12 - 280 CU. FT. CAP.
★ BIG AUGGIE 14 - 320 CU. FT. CAP.
TRUCK MOUNT AVAILABLE

Farm policy is 'too fragmented'

COLUMBIA, Mo. — U.S. agricultural policy is too "fragmented" to deal with large issues such as the survival of the family farm, said a University of Texas political scientist at a recent farm policy meeting here.

through the process of regulatory definition of policy rather than taking the risk of legislation."

Also, farmers fear the legislative process because the "farm bloc" in Congress is decreasing.

However, in order to deal with issues such as whether traditional family agriculture can survive, farmers need to become involved in "coalition politics."

Coalitions of farmers with labor, consumers and "indeed even with the environmentalists" could be formed and compromises could be made to bring big agricultural issues into the "legislative arena."

"In our system there is no place other than the legislatures to raise the big issues."

Farmers could also work more closely with state and local governments, where issues such as land use, zoning and taxation can be more easily handled.

"The economic crisis of the family farm is having an impact on larger economic issues," Hill noted.

"There is a tendency now to use farmers and especially their wives as an immobile labor force in rural industrialization."

Hill questioned whether farmers and their wives should continue with their off-farm jobs, "to subsidize farming which in a sense cannot support itself under present conditions or whether we should begin to look for opportunities to raise the larger issues, to take that risk in coalition politics."

"Farmers I think have a choice now. We can either go on in this kind of fragmented way or take the risk of coalition politics," said Frances Hill at the UMC-Perry Foundation Seminar on Agricultural Marketing and Policy.

"If we simply sum up the policies around the some 120 commodity organizations, what we find is not that these organizations are talking about credit, taxation, widow's tax, land use or energy policy.

"What we find instead is that they are splitting off from each other, so that those people who regulate eggs need not be bothered by dealing with those people who regulate poultry.

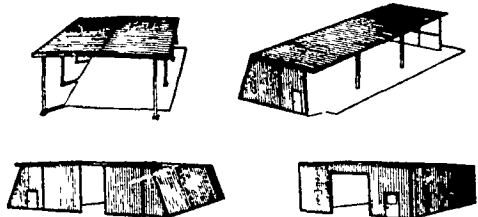
"What we have then is a system that is purposely designed to avoid the large issues," she said, issues such as "the quality of life, the nature of farmers and the relation of land to the public interest."

Policy makers during the 1940's decided that agricultural programs would be "fragmented and commodity-specific." One reason this happened was "farmers feared the legislative process," Hill said.

"It seems safer somehow for each fragment of farmers to find a fragmented sub-agency and to work

THRIFSTOR

Economical
Steel Buildings for
Rural And Urban Use



No matter what your agricultural or storage needs, there's a Thrif-stor building that's right for your needs. Equipment storage. Livestock building. Grain storage. Workshop or Garage.

Thrif-stor's strong steel construction is available in four basic building types, in widths ranging from 20-60 feet and heights from 8-16 feet. Choose from galvanized or nine beautiful color finishes too.

Manufactured by Mesco, one of the nation's leading producers of pre-engineered steel building systems, Thrif-stor buildings are professionally designed to provide solid strength at maximum savings.

So, wherever you need a low cost, low maintenance, light duty building let Thrif-stor provide the practical, attractive solution. Give us a call.



All Styles of Commercial Buildings Also Available

VERNON MYERS, INC.

STEEL BUILDINGS & GRAIN STORAGE
RD4 Box 845
LEBANON, PA. 17042
PHONE: 717-867-4139