

Bagworms may overwinter on trees

FLEMINGTON, N.J. - Bagworms are caterpillars that live in spindle-shaped bags constructed from bits of foliage and held together with silk.

The spindle-shaped bags are from one to two inches long and may be seen hanging from infested trees and shrubs. Bagworms frequently attack arborvitae and juniper, so a substantial amount of defoliation may occur, say experts.

Overwintering takes place in the egg stage in bags attached to trees and shrubs. The eggs hatch during early June.

Some degree of bagworm control can be obtained by picking bags from infested plants during the Fall months.

One should destroy the bags or place them in a deep, open container near infested trees so that any beneficial parasites that may be present in some of the bags can get out.

Next June a person should apply diazinon orthene to prevent serious defoliation of arborvitae by bagworms.

WHAT'S NEW

SOIL PULVERIZER

A complete new lineup of TP Series Pulverizers that expands the range of models from six feet to the big 32 feet 8 inch hydraulic wing pulverizers is announced by Brillion Iron Works, Brillion, Wis.

Manufactured in 14, 16, 18 and 20 foot rolling widths, these new pulverizers fold to approximately 4 1/2 feet wide for transport from field to field.

The Brillion TP Pulverizer is designed specifically for transport from one end, with the mechanism as an integral part of the unit.

To change from field position to transport the drawbar braces fold back against the frame by pulling only two pins. No wrenches are required.

Hitching up to your tractor is done with the "easy rider" hitch, which is raised when in field use and lowered and locked when hooking up to the tractor.

The Brillion TP

Pulverizers also feature a long, heavy duty drawbar for easy turning when pulling behind a disk, field cultivator, or other implements, according to Brillion Iron Works.

These new Brillion TP Model Pulverizers are available with 16 foot smooth rollers (with optional sprocket wheels) or 20 foot crowfoot rollers.

For further information, contact Mr. Win Riemer, Brillion Iron Works, 200 Park Avenue, Brillion, Wis., 54110 (414) 756-2121.

KRAUSE INTRODUCES NEW TANDEM DISC

Krause Plow Corporation of Hutchinson, Kansas, announced the 1930 Series, a new line of flex-wing four-row/six-row tandem discs.

The 1930 Series are the first four-row/six-row discs to have complete hydraulic, over-center wing folding. This provides cutting widths of thirteen feet nine inches or twenty feet eleven inches, and over 200 pounds of

working weight per blade with the wings folded. The wing flexes up for working terraced or uneven ground.

The new discs also feature big 20, 22 or 24 inch blades, overlapping front gangs, rugged steel tube construction and a heavy-duty steel tongue.

The 1930 is the latest in a series of flex-wing discs from Krause, the company which originated flex-wing design in 1966.

For more information, please contact: Mr. Floyd Barkman Krause Plow Corporation, 305 S. Monroe Hutchinson, Kansas 67501 316-663-6161.

CORRAL

Star Agri Products has introduced a new portable corral panel called Agstar Quik-Corral, according to an announcement by Floyd Carter, marketing manager.

The new Quik-Corral panels can be set up where the cattle are, instead of bringing cattle to the corral, which helps cut labor costs, according to Carter.

These corral panels have been designed so they are strong enough to hold the roughest cattle but light enough to handle without strain. The 10-foot-long panels weigh 76 pounds. High-strength, lightweight steel tubing is used in construction, and all joints are welded. There is also an unusual hinge arrangement on the corral panels that

allows 120-degree hinging, and also hinging two panels from one. This has been made possible because one end of each panel has double hinge pin brackets. A cattleman can design an efficient corral layout from the complete selection of four components being offered by Agstar. Available are 10-foot corral panels; 10-foot arch panel with opening for 4-foot gate; and an arch assembly, with an opening for a 4-foot gate; and a 4-foot tubular gate complete with chain latch.

For more information contact Star Agri Products, P.O. Box 115, Goshen, Ind. 46526.

xxx

Even the best of us sometimes make a mistake. Some famous flubs in the world of stamp collecting are shown in the December Reader's Digest. Among them: a 1947 Monaco stamp showing Franklin D. Roosevelt with six fingers on one hand; a 1949 Saudi Arabia stamp depicting a conventional airplane with no propeller; and a 1938 Fiji Islands issue showing an outrigger canoe in full sail - but with no there to guide it.

xxx

Tomatoes frequently become soft and watery and subject to decay if ripened in the refrigerator. But firm ripe tomatoes held at a cool room temperature for several days do not lose much vitamin C.

ATTENTION NEW JERSEY LAND OWNERS

WANTED TO RENT
Land in Mercer, Middlesex
or Monmouth County
Will Pay Top Dollar
For 50 Acres & Up
Productive Tracts.

Call after 5 p.m.
201-329-2765



**Buy a new John Deere
or used tractor now...
no finance charges
until March 1, 1979**

Spring of '79 is quite a way off.
But right away you can
have modern, productive machinery
and put it to work. Now's the time
to buy. Stop in and see!



LANDIS BROS. INC.
Lancaster, PA
717-291-1046

ROBERT E. LITTLE INC.
Zieglerville, PA
215-298-9643

ADAMSTOWN EQUIPMENT INC.
Mohnton RD2, PA 19540
(near Adamstown)
215-484-4391

STANLEY A. KLOPP INC.
Berrville, PA
215-488-1510

PIKEVILLE EQUIPMENT INC.
Oyster Dale Road
Oley RD2, PA
215-987-6277

KERMIT K. KISTLER INC.
Lynnport, PA
215-298-3270

NEUHAUS'ES INC.
RD2, York, PA
I-83 Loganville Ext. 3
717-428-1953 or
235-1306

M.S. YEARSLEY & SONS
West Chester, PA
215-696-2990

SHOTZBERGER'S EQUIPMENT
Elm, PA
717-665-2141

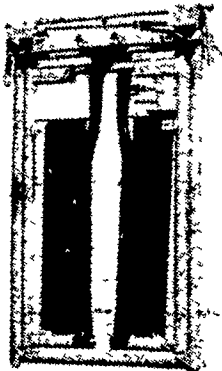
AGWAY INC.
Chapman Equipment
Center
Chapman, PA
215-398-2553

A.B.C. GROFF INC.
New Holland, PA
717-354-4191

I.G.'s AG SALES
Silverdale, PA 18962
215-257-5136

TOX-O-WIK

Automatic
Head Gate



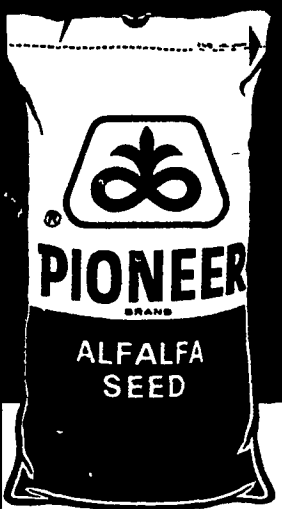
Insecticide Applicator
Sure Way To Control Lice



EDWIN W. HOOVER

R.D. #1, Ephrata, PA 717-733-8313
SALES & REPAIR

PIONEER . . .
the name to remember
for alfalfa seed!



531...

the number
to remember
for high
yields.

- 531 is a rapid recovery alfalfa
- Offers excellent tolerance to

Anthracnose plus very good tolerance to bacterial wilt.

- Well suited to 2, 3 or more years of production. Alfalfa supply limited.

See or call
your Pioneer
Salesman soon.



PIONEER.
BRAND
ALFALFA SEED

PIONEER HI BRED INTERNATIONAL, INC
EASTERN DIVISION TIPTON, INDIANA

Pioneer is a brand name. Numbers identify varieties. Registered trademark of Pioneer Hi Bred International, Inc. Des Moines, Iowa 50308

NOTICE

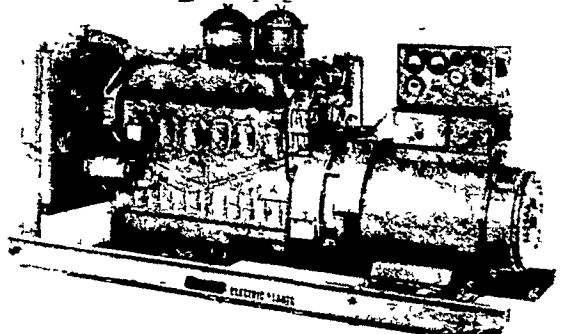
**ARKANSAS VILLAGE
PUBLIC AUCTION**

**SCHEDULED FOR
DEC. 13, 14 & 15, 1978**

**Was Cancelled
By Error In The
Sale Register
Of Nov. 25, 1978
Martin Auctioneers, Inc.**

ELECTRIC GENERATING SYSTEMS

Built to Your Specifications
Manual or Automatic
L.P. Gas - Diesel - Gasoline



We Also Carry G.M. & Detroit Engine Parts.
Sales - Service

MARTIN ELECTRIC PLANTS

Isaac W. Martin, Owner
Pleasant Valley Rd., RD2
Ephrata, PA (717) 733-7968