

First National farm summit next week

NEW PARK — Gail McPherson, New Park area National Director for the Agriculture Council of America announced recently that leaders from every segment of U.S. agriculture will participate in a national forum to "search out new approaches to the crucial issues facing the farm economy."

The ACA leader said the first National Farm Summit, sponsored by the Agriculture Council of America and Texas A&M University, will be conducted December 4 to 6 on the campus of Texas A&M University in College Station, Texas. U.S. Senator

Bob Dole (R-Kan.) and former Texas Governor and Cabinet member John Connally are among the featured speakers at this meeting which is expected to attract several hundred participants concerned with agriculture's future.

"The purpose of the Summit is to go far beyond a discussion of the nature and causes of farm problems," explained Dr. Jarvis Miller, President of Texas A&M University which has the nation's largest College of Agriculture. "The purpose is to take a fresh look at the total picture. To find — where possible — creative

answers and new solutions, and to frame these findings in specific, practical and useful terms."

The December meeting will culminate more than a year of planning, research and study on the part of some of the country's leading farm economic experts from both the public and private sectors. The focal point in this preparation has been the work of five special task forces who have been exploring major issue areas. Each group is now finishing a comprehensive report which will be presented and

discussed in detail, in hope of reaching an overall consensus on solutions to current and long-term agricultural problems.

"Our challenge is really to challenge agriculture itself. It's time for those of us involved in the nation's most basic industry to reach beyond the old divisions to find the common ground...to identify the important areas of agreement, and define the significant opportunities for positive changes," added Dr. Miller.

Grange upset over U.S. decision

DENVER, Colo. -- Delegates attending the 112th Annual Session of the National Grange here last week were shocked by the announcement from Cecil Andrus, Secretary of the Interior, that he had withdrawn 110 million acres of federal land in Alaska from commercial development or other use for three years. The Secretary's action,

which had the approval of President Carter, withdraws the land from "settlement, sale, entry or selection" and reserves it "for the purpose of protecting and maintaining resources values of said land."

John Scott, Master of the National Grange, stated that the Administration has turned its back on the citizens of Alaska and turned a deaf ear to the pleas of rural citizens throughout the United States who had requested that this issue be settled by their representatives in Congress.

Scott said that with the problems of inflation and long-term energy shortages that are facing the nation, it is incomprehensible we would willingly and prematurely lock up potential natural resources whose development is needed to offset our dependence on foreign energy supplies.

We import nearly 50 percent of the crude oil needed in this country, which has been one of the major causes of inflation. We are short of timber for building supplies causing housing prices to rise. Scott made the Grange's position clear, stating that the Grange believes in the conservation of natural resources but we should be very cautious in locking up our natural resources before we can determine those areas containing resources that are needed to solve today's economic and social problems.

4-H dairy council meets

CHAMBERSBURG - The Franklin County 4-H Dairy Council Board met November 14 to set up plans and committees for the Winter programs.

The Dairy Bowl contests will begin in January. A committee was appointed to review the program and set up the schedule. The final round this year will be held separately from the covered dish supper.

A committee was appointed for the covered dish supper, and the date will be set at a later time. Several ideas were discussed for the entertainment. This decision was tabled until the next meeting, so the leaders can discuss it with their clubs.

There will again be a 4-H dairy calf sale. A committee was appointed and plans are underway.

There is a new club now in progress, led by Grant Gayman and Stanley Helman. It is a dairy management club for older 4-H dairy members interested in a more advanced and concentrated study of

dairy management practices. Anyone 15 to 20 years of age who wishes to join is welcome.

Extension Dairy Specialist, Phil Wagner, explained that a dairy foods project is available now. If any club or individual is interested, there are several projects, with books, available through the Extension office.

The next meeting will be in January.

Wheat Germ

Wheat germ is a perfect way to improve your family's nutritional status. For the body to properly utilize its carbohydrates and protein, there has to be a full complement of B vitamins — and wheat germ meets the need. Use raw wheat germ in baking, but for sprinkling on yogurt at breakfast — or adding to a noodle casserole — use the toasted kind. It tastes better and is more digestible.

PUBLIC SALE REAL ESTATE — WOODLAND HOUSEHOLD GOODS — ANTIQUES FARM EQUIPMENT — TOOLS SATURDAY, DECEMBER 9 9:00 A.M.

Located along Mohler Church Road, one mile North of Ephrata, Ephrata Twp., Lancaster Co., Pa. DIRECTIONS: From Ephrata take Route 272 North, turn right onto Schoeneck Road, then left on Mohler Church Road. Sale fourth property on left. Watch for yellow sale signs.

A certain tract of land consisting of 2 ACRES more or less, erected thereon a:

2½ Story Frame Dwelling

with aluminum siding. Storm windows and doors. FIRST FLOOR: Large kitchen, dining room, living room, sun porch, utility room. SECOND FLOOR: 3 bedrooms, closet full bath, balcony. Attic storage. Full basement, cold cellar. Porch. Oil fired hot air heat. Electric water heater. Well and cistern with pressure system. Large lawn and garden. Shade trees. Shrubbery.

STONE and FRAME BANK BARN and tobacco shed combined with 2 Car Frame Garage attached.

OPEN HOUSE: Saturday, November 25 and Friday, December 1, 12:00 noon to 4:00 P.M. or by appointment.

4 ACRES OF WOODLAND located on Ephrata Mountain, with private right-away leading from Mohler Church Road. For more information contact Irwin W Nolt 717-733-2615.

TERMS FOR BOTH REAL ESTATE: 10% down day of sale. Settlement in 30 days.

Real Estates at 2:00 P.M.

HOUSEHOLD GOODS

Hotpoint refrigerator with freezer, like new; Hotpoint chest type freezer; Maytag wringer washer, like new; Kenmore electric apartment size stove; 4 utility cabinets; 4 plank bottom kitchen chairs; 8 board dropleaf ext. table; recliner chair; sofa bed; platform and swivel rockers; arm chairs; 4 pc. maple bedroom suite with spring and mattress; double bed and 2 single beds with springs and mattresses; wardrobe; 8 DAY GRANDMOTHER CLOCK with glass front; portable Singer sewing machine; piano stool, flower stand with glass ball claw feet; 12'x15' rug and mat; sweeper with attachments; pole light; window fan; floor lamps; card table with 4 chairs; 5 clothes trees; electric heater; meat grinder with motor; meat saws; Agateware; electric can opener; 3 butter churns; hassocks; silverware; stainless steel cookware; lots of tumblers; crocks of various sizes; vases; cookie jars; large assortment of cut glass and painted dishes; chicken on the nest dishes; china and steel animals; decorated pitchers; kitchen scales; books; copper canner; flower pots; lawn chairs; porch bench; lots of throw rugs; QUILTS; quilt tops; patterns and patches; linens; table cloths; pillows; spreads; comforters; several shawls; horse blanket; canning jars; brooms; buckets; plus more useful kitchen ware not listed.

ANTIQUES

Bowers sideboard and 6 living room chairs; slant top desk with Birdseye drawers knobs; pine blanket chest with shelf; cedar chest; bookcase desk combined with beveled mirror and frosted glass; 2 mantel clocks; straw cutter; 6 legger library table; wooden high chair; 3 sets of six, various types living room chairs; 4 old rocking chairs; washstand; dresser; bookcase; several cane seated chairs; old mirror; toy box; 2 trunks; suitcases; 2 spittoons; old bottles; toy castiron stove; steel meat fork; ladle; apple peeler; lantern; wine glasses; salts; steel lion penny bank; several straight razors and stone; quilting frame.

FARM EQUIPMENT — TOOLS

ROPER HYDRO 13 H.P. RIDING MOWER, like new; Oliver 60 tractor with cultivator and plow; 28 disc harrow; potato plow; garden hoer; perry harrow; tobacco lath; 2 wheel trailer; 6 ceiling type gas heaters; water trough; pump jack; HAHN ECLIPSE GARDEN TILLER and 21 IN. SELF-PROPELLED LAWN MOWER, both in good condition; 32 in. lawn sweeper; table saw with electric motor; jig saw; lathe and drill press combined with chisels; anvil; forage blower; ¼ in. drill with press; bench grinder with electric motor; ½ H.P. electric motor; MASON and CARPENTER TOOLS; BLACKSMITH TOOLS; electric saw and drill; 40 ft. ext. ladder; wheelbarrow; glue pot; forming tools; air compressor; pipe threader; cutter; vise; socket set; assortment of wrenches; punches; bolts; nails; wire; bench vise; work bench; drill bits; wooden pulleys; log chains; water pump; fishing equipment; V belts; lots of garden tools; hay knife; post hole saw; stepladders; cords; axes; hammers; forks; feed chest and scoops; ropes; digging irons; picks; coal brooder stove; lots of sledge hammers; bag wagon; lawn roller; chicken feeders and waterers; 4 rollaway chicken nests; cops; pipes and fitting; garden cart; school desks; grain bags; apple picker; auger bits; berry boxes; shovels; rakes; hoes; oil heater; jack; milk cans; shoe lathe; scythe; hog scrapers; Stevenson 12 ga. single shot gun; Stevenson 32 single shot rifle, plus many more things not listed.

SALE ORDER: Tools, Equipment, Household Goods, Antiques. Real Estates at 2:00 P.M. Come early and enjoy the day with us.

Sale for
ELMER Z. HIGH
717-733-8379

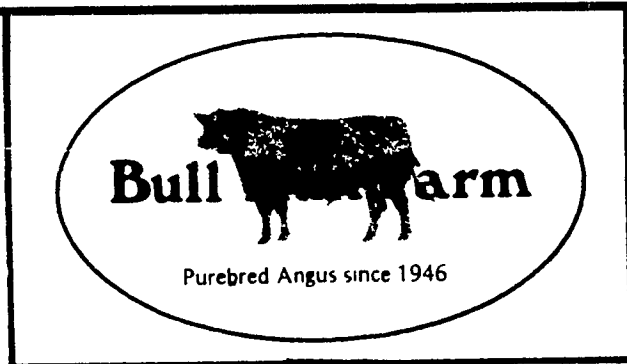
Atty. Geo. Morgan
Aucts.

Nevin Z. Martin — 354-7186

Lewis B. Groff — 354-7826

Clerks: Martins

Lunch Served
Not Responsible for Accidents



Proudly Hosts A Joint Production Sale of ANGUS CATTLE With



Sat., Dec. 9, 1978 at Aldie, Va.

Lunch served at 11:00

Sale starts promptly at noon

Directions to Sale

Rt 15, 2 mi. South of Gilberts Corner (Rt. 50), Right on 600 (S) - Bull Run Farm SIGN

Features Include:

Daughter of Bon View Winton 1342

- International & Denver Champ
- Bred to Sayre Patriot

Denver Champ & Twice North American International Champion no other bull has this record

Also Featured Will Be the 1st Mon Repos Chapparel Calves Offered For Sale In this Area

- 5 Angus Herd Sire Prospects
- 2 Wye Bred Bulls
- 2 1342" Sons
- 1 Revolution Colossal Cross

- 15 Bred Heifers
- 3 Open Heifers
- 30 Cows With Calves
- Several 3 in 1 Combinations

Several top Notch "Colossal" granddaughters nursing calves by Wye, Graham "1342" herd Sires their offspring may carry as many as 6 Certified Meat Sires in 1 Pedigree

FOR CATALOGS & INFORMATION CONTACT

VA. ANGUS ASSOC., Sale Mgr. (804) 293-3044

John Rucker - 364-2875

Ed Tumbler - 327-4737

Preston Swecker - 688-6425