

## Lehman shows winning cow



Maggie Murphy

Deborah Lehman, York R1, exhibited the first place senior yearling in milk at the National Junior Guernsey Show held in conjunction with the North American International Livestock Exposition held last week in Louisville, Ky. Debbie's cow, Carsals TD Daisy, also went on to win the same class in the National Guernsey open show. Debbie is 11 years old and has been a 4-H member for three years. She is a member of the White Rose Dairy Club. She also owns several other cows in the family herd.

## Dole addresses Nat. Grange delegates

DENVER, Colo. — In an address to the National Grange at its 112th Annual Session, meeting in Denver, Colo., last week, Senator Robert Dole of Kansas called for a "more aggressive agricultural export policy."

"I am still convinced that the future of American agriculture depends on our export policy," said Dole, "and we should be exporting \$30 billion of agricultural products per year by 1980."

Dole assured the Grange of his continued support of the American farmer, saying that he shared many common beliefs with the Grange including the need for increased income and fair returns on investment.

Other agricultural issues addressed by the Senator included the meat import quota act, the set-aside program, outlook on dairy, and inflation. Senator Dole assured the Grange he would re-draft the meat import quota act to meet President

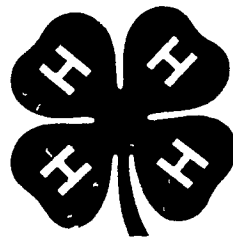
Carter's objections. "It is essential that cattlement be afforded the protection and assurance for the future provided in this bill," said Dole.

Dole criticized President Carter for "not taking adequate action on the grain set-aside program." He claimed the President's announcement to maintain the same set-aside program as last year "is further proof that this Administration is less than concerned about the future of farmers."

Speaking on the dairy outlook, Dole commented that, as a result of lower milk output and strong demand, combined with low commercial stocks, wholesale dairy product prices will probably remain above the new support purchase prices until the end of the year and beyond. He did caution that USDA stocks of butter and non-fat dry milk must be disposed of carefully to avoid hurting producers.

Citing the "shocking" drop in realized net farm income over the past three years, Senator Dole stated that the farmers have not been the cause of inflation but instead have been the victims. "They cannot stand the impact that double-digit inflation has on the farm goods and equipment they buy," he said.

In closing, Senator Dole promised a better political climate in the coming Congressional session for agriculture. He also said "every four years America examines itself and its leaders in the heat of political controversy. If you can't get our ears in Washington, you can get our seats and that's one thing we understand."



## Grange takes strong political stand

DENVER, Colo. -- Delegates attending the 112th Annual Session of the National Grange November 13-20, in Denver, Colo. called for an "all-out effort to curb the powers of regulatory agencies." They urged continued Congressional monitoring to eliminate the economic drain by agencies which serve no useful purpose and at the same time opposed the creation of a Consumer Protection Agency.

They voiced support for the same public funding of Congressional candidates as is presently done for Presidential candidates and for the electoral reform plan known as the district plan, thus eliminate the electoral college. They opposed any plan for instant voter registration.

The Grange delegates, representing 500,000 members in 41 states, expressed strong views regarding the taxes paid to support the cost of the nation's welfare program. They recommended tighter controls on welfare spending, work incentive programs, thorough investigation of welfare applicants and periodic reevaluation of welfare recipients by review boards.

The Grange also advocates a complete revision of the Social Security system and the implementation of a new program providing only supplemental retirement benefits to persons on the basis of past contributions, as was the original intent. They also voted for a change in the present regulations to allow widows under 60 to

receive benefits for a minimum of one year as an advance on their later Social Security earnings.

In the matter of Indian affairs, the Grange recommends that differences between Indians and non-Indians be resolved through the courts. In cases that cannot be resolved by court action, they suggest the President and the Congress develop legislation to resolve the remaining conflicting claims to land and resources.

The Grange opposes the President's recommendation on amnesty for foreigners and said those wishing to become U.S. citizens should comply with the immigration laws and regulations. The Grange is also opposed to the deadline extension for ratification of the Equal Rights Amendment.

## SPECIAL SALE FEEDER CATTLE & CALVES

FRIDAY, DECEMBER 8  
2:30 P.M.

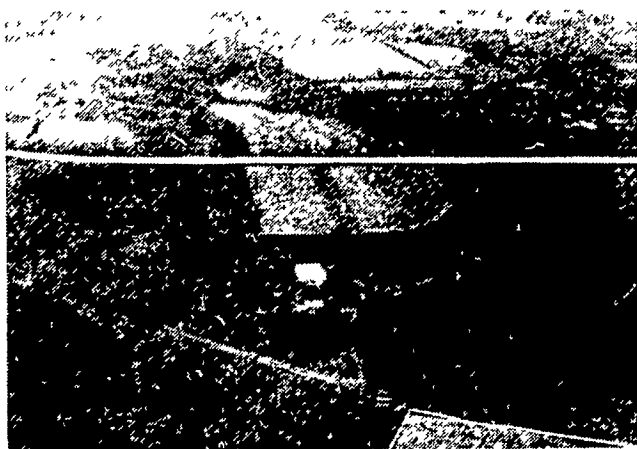
BLUE RIDGE  
LIVESTOCK SALES, INC.  
CHARLES TOWN, WV 25414

## PUBLIC SALE REAL ESTATE SATURDAY, DECEMBER 9

2:00 P.M.

FARM: Approximately 120 acres. About 66 acres are tillable and the remainder is woodland and meadow.

LOCATION: On Old Strasburg Pike between Gap and Parkesburg, in Sadsbury Township, Lancaster Co. 1.7 miles East of Gap Turkey Hill Minit Market.



A 66' x 22' 2 1/2 story stone dwelling with an aluminum siding addition, has brick porches and patio; hot water oil heat; cement basement; public water; septic tank and drain field; 2-car garage.

The first floor of the house has a modern kitchen with cherry raised panel cabinets and a dining area, a living room with fireplace, a powder room and a 14' x 17' walnut paneled office with oak pegged floor. The second floor has 3 bedrooms, lots of closets, and two bathrooms - one with a tile whirlpool bath tub.

Other buildings include a 44' x 72' frame bank barn, a milk house, a spring house, and a 2-story frame tenant house.

OPEN HOUSE - Saturday, December 2,  
1:00 to 4:00 P.M.

Terms by  
MRS. JEFF COATS

Chet Long, Auctioneer  
717-733-9601  
David E. Greer, Atty.

## PUBLIC SALE SATURDAY, DECEMBER 16

9:30 A.M.

Located on Route 209, between Elizabethville and Loyalton, Pennsylvania (across from the R & K Diner)

### FARM MACHINERY

300 Farmall tractor; Friend air blast sprayer with 400 gallon tank; Super A Farmall tractor with 2 way plows, cultivator, corn planter, side dressers, 1 row transplanter; Montgomery Ward 12 h.p. tractor; No. 6 Massey Harris 7' mower; 3 bottom plow; 4 and 2 section spring tooth harrows; yellow Devil weed sprayer; potato plow; assortment of 2 wheel trailers for small tractors; Montgomery Ward 5 h.p. riding rotary lawn mower; 2 Aladdin greenhouse heaters; app. 25 bags of 10-10-10 fertilizer; app. 7 bags of ammonium nitrate fertilizer; assortment of bee equipment; app. 4 bundles of wooden shingles; assortment of hand and garden tools; etc.

### 10' ALUMINUM BOAT WITH OARS

### ANTIQUES

3 PC. VICTORIAN WALNUT MARBLE-TOP BEDROOM SUITE WITH HIGH BED, VERY ORNATE; LARGE WALNUT VICTORIAN WARDROBE, VERY ORNATE; marble-top stand; marble-top bureau; Victorian hanging wall mirror; walnut cane seated rocker; oak bed; 4 walnut cane seated chairs (1 damaged); 3 oak stands, 1 with metal dolphin feet; oak extension table; 3 oak high back chairs; walnut gingerbread clock; gold leaf mirror; mantel clock; 2 school desks; oak sideboard; assortment of picture frames; 2 kerosene lamps; etc.

### HOUSEHOLD ITEMS

RCA floor model color TV; Early American-style sofa; record cabinet; 4 maple captain's chairs; single box spring; wooden bed; metal double-door cabinet; dishes; pots; pans; etc.

NOTE: Sale will start with farm machinery and farm related items.

TERMS: Cash or Travelers Checks.  
Personal checks accepted only from persons having an established account with Auctioneer.

Owner  
HARMON V. TUNISON

Lee D. Dockey  
Auctioneer-Estate Liquidator-Appraiser  
Box 164, Pillow, PA 17080  
Phone: 717-758-6004

## PUBLIC SALE 110 ACRE FARM SATURDAY, DEC. 9

At 11 A.M.

To be offered as one or 6 separate tracts, 1 mile opposite Sun-Set Diner on 422, 5 mile East of Reading on Pineland Road, entrance on Schoffer's Road.

Show house by appointment Sat Dec. 2nd. from 1 to 3 P.M.

Stone house dated 1700, secluded, 1/4 mile from road, private lane, slate roof, original hardware, 2 fireplaces, 2 baths, 2 kitchens, 6 bedrooms, hot water heat, outbuildings, stone barn, desirable for horses or cattle

- Tract No. - 1 12 acres
- Tract No. - 2 52 acres, house and barn
- Tract No. - 3 12 acres
- Tract No. - 4 13 acres
- Tract No. - 5 11 acres
- Tract No. - 6 11 acres

With sewage near-by

Terms By  
JOHN DeLONG

Auctioneer - C L Butter Zimmerman  
R.D. #6 Box 290 Sinking Spring  
Phone (215) 777-9820  
Attorney - Kenneth Pocrass