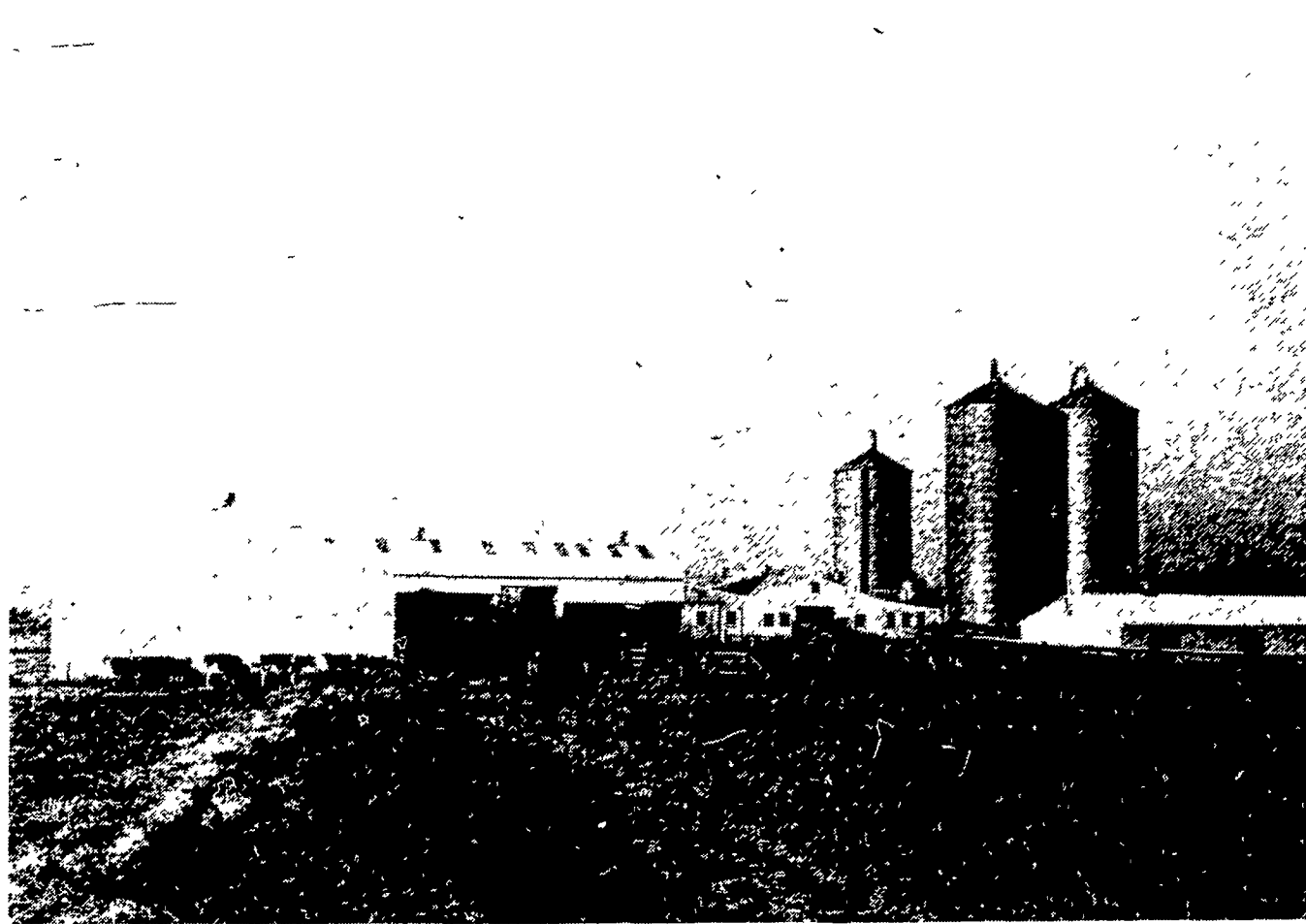


A sixth generation dairy farm

Farming comes naturally to the Mowrer family



MY-T-Hi Farm of Spring City R1 milks 125 Holstein cows and raises 120 replacement heifers.

The Mowrers try to feed and raise all their own feed. They work with about 700 acres of land.

By JOAN LIESAU

SPRING CITY - Farm machinery ranging from a John Deere 3300 combine to a chisel plow, towered above the many Farm Tour visitors of the MY-T-Hi Farm, a sixth generation dairy farm owned in partnership by S. Horace Mowrer and his son Michael.

The Mowrers have 125 Holstein cows and 120 replacement heifers. "We raise all our heifers and sell the bull calves" Mike said. The calves are weaned at five to six weeks and put on ready mixed feed and hay to start, and then changed over to home grown feed. The calves start out in their own pens and then move to a total of three other pens, according to their size and age. The heifers will calve at two to two and a half years old. The heifers are bred naturally and calve at another farm. They are then returned to MY-T-Hi farm and bred artificially. At five to six years old the cows are sold. "If they're not making what we want them to, they don't stay" Mike said. And right now, the Mowrers want their cows to milk a minimum of 14,000 pounds in 305 days.

The Mowrers try to feed and raise all their own feed. Last year they made 28,000 bales of hay and 4000 bales of straw. They work with about 700 acres; 104 acres of their own, and renting the rest. Their acreage is mainly utilized for crops. "It cost too much to have the cows on pasture, it pays better to

plant" Mike said. Allotting 85 to 100 acres to pasture, 340 acres are in corn, 220 in hay, 80 in small grains and 20 acres are planted with soybeans, while double cropping some of the corn and soybeans. "The soybeans and half of the hay and corn is our cash crop" Mike said.

The Mowrers feed high moisture ear corn, corn silage and hayage with soybean meal on a limited basis, not buying more than eight tons per month. The cows are fed with electric feed carts and bunk feeder.

The cows are milked in a tie stall barn with an automatic pipeline milker system. They market their milk through Interstate Milk Producers Co-op. The milk then goes to Bechtel's Dairy in Royersford.

The herd is DHIA tested and produces 40 pounds per day per cow. The herd is pregnancy checked every 30 days.

Rather than using mold board plowing, the Mowrers use the chisel plow "soil saver." "It just loosens the top up" Mike said, "we use it mainly to save the soil. It helps hold the water and won't let the soil wash away" he added.

Tom Mowrer, Mike's brother is presently working on the farm and plans to enter the partnership in the near future.

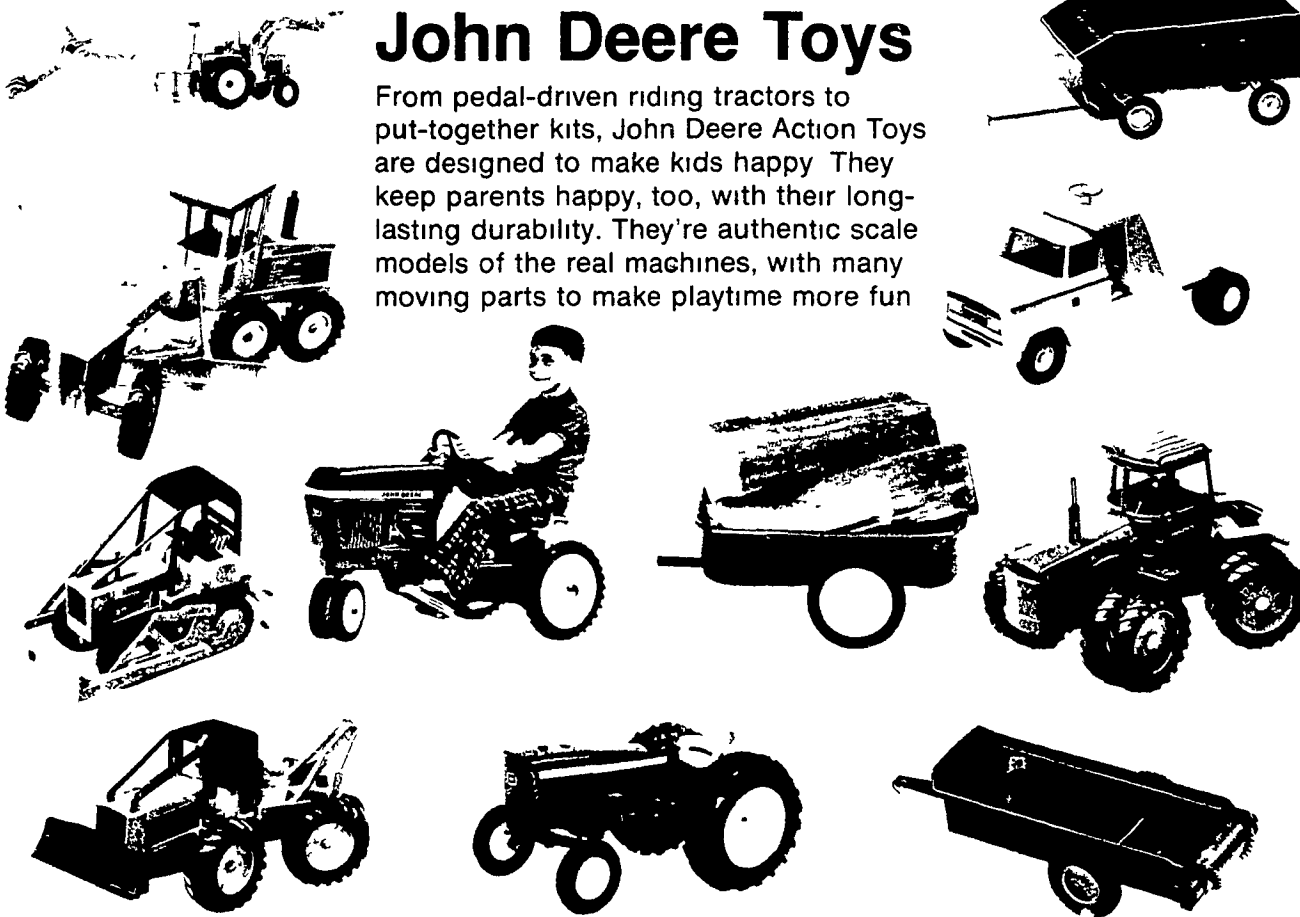
In 1976 Horace was named one of six Master Farmers in the five state area. In 1977 Mike was the top corn

(Turn to Page 112)

JOHN DEERE
CHRISTMAS Gift Ideas
SHOP EARLY AND SAVE

John Deere Toys

From pedal-driven riding tractors to put-together kits, John Deere Action Toys are designed to make kids happy. They keep parents happy, too, with their long-lasting durability. They're authentic scale models of the real machines, with many moving parts to make playtime more fun.



LANDIS BROS. INC.
Lancaster, PA
717-291-1046

ADAMSTOWN EQUIPMENT INC.
Mohnton RD2, PA 19540
(near Adamstown)
215-484-4391

PIKEVILLE EQUIPMENT INC.
Oyster Dale Road
Oley RD2, PA
215-987-6277

NEUHAUS'ES INC.
RD2, York, PA
I-83 Loganville Ext. 3
717-428-1953 or
235-1306

SHOTZBERGER'S EQUIPMENT
Elm, PA
717-665-2141

A.B.C. GROFF INC.
New Holland, PA
717-354-4191

ROBERT E. LITTLE INC.
Zieglerville, PA
215-287-9643

STANLEY A. KLOPP INC.
Bernville, PA
215-488-1510

KERMIT K. KISTLER INC.
Lynnport, PA
215-298-3270

M.S. YEARSLEY & SONS
West Chester, PA
215-696-2990

AGWAY INC.
Chapman Equipment Center
Chapman, PA
215-398-2553

I.G.'s AG SALES
Silverdale, PA 18962
215-257-5136

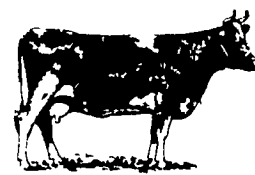
HIGH PRESSURE WASHING

OF POULTRY HOUSES AND VEAL PENS

BARRY L. HERR

1744 Pioneer Road, Lancaster, Pa.
Phone: 717-464-2044

FRESH COWS EVERY WEDNESDAY IS SPRINGERS



DAIRY DAY

AT NEW HOLLAND SALES STABLES, INC.

New Holland, PA

If you need 1 cow or a truck load, we have from 100 to 200 cows to sell every week at your price. Mostly fresh and close springing Holsteins.

Cows from local farmers and our regular shippers including Marvin Eshleman, Glenn Fite, Kelly Bowser, Bill Lang, Blaine Hoffer, Dale Hostetter, H.D. Matz, and Jerry Miller

SALE STARTS - 12:00 SHARP

Also Every Wednesday,
Hay, Straw & Ear Corn Sale - 12:00 Noon.

All Dairy Cows & Heifers must be eligible for Pennsylvania Health Charts.

For arrangements for special sales or herd dispersals at our barn or on your farm, contact:

Abram Diffenbach, Mgr.
717-354-4341

OR
Norman Kolb
717-397-5538

HEIFERS

BILLS