

Dauphin County DHIA Monthly Report

OCTOBER 1978

Harriet, an 8-year old Holstein in the Paul Crissinger herd, is the high cow for lactations completed in October. She produced 25,561 pounds of milk and 1031 pounds of butterfat. Her average test was 4.0 per cent.

OWNER BREED	NO. COWS	% DAYS IN MILK	LBS. MILK	% FAT	LBS. FAT
Great View Farms H	41.7	96.0	54.8	3.6	1.99
Restful Acres H	46.2	85.6	56.0	3.5	1.97
Harold M. Nissley H	39.6	89.7	50.4	3.7	1.84
Roy C. Wilbert H	40.8	86.7	46.3	3.8	1.74
Mahlon L. Lehman H	44.2	92.5	44.1	3.9	1.72
Paul L. Crissinger H	64.9	89.5	45.3	3.7	1.69
Conewago Farms H	76.1	94.0	41.6	4.0	1.65
Lee R. Sweigard H	19.3	100.0	43.4	3.8	1.64
Robert J. Schaffer H	55.7	77.1	37.4	4.3	1.60
Robert H. Beach, Jr. H	39.0	98.6	43.2	3.7	1.60
Robert Keiter	16.0	100.0	43.5	3.7	1.60
Larry L. Boyer H	25.0	89.1	40.6	3.9	1.59

John Roy Book H	46.6	84.1	41.1	3.8	1.56
Elwillo Farms Mix	101.8	86.1	43.0	3.6	1.56
J. Melvin Brandt H	64.2	85.0	38.8	4.0	1.54
Bryncloed Farm J	134.6	92.3	29.4	5.2	1.53
Edgar Hoffman Pegmar H	29.6	84.6	44.3	3.5	1.53
Wilbur Campbell G	59.9	88.4	33.6	4.5	1.51
Catalpa Farms H	77.9	82.5	35.6	4.2	1.49
Lauden Farms H	98.7	83.7	38.0	3.9	1.48
Lebo Brothers G	34.2	88.1	30.5	4.8	1.47
R Own Dairy, Inc. H	80.5	89.5	41.1	3.6	1.47
Earl Campbell H	54.6	79.9	35.7	4.1	1.46
Homer Campbell H	77.5	93.4	37.0	3.0	1.45
Arthur Brandt H	72.8	81.4	39.2	3.7	1.45
Earl E. Keefer A	73.7	81.3	34.6	4.2	1.44
Robert Oellig Mix	34.1	90.8	36.6	3.9	1.42
Lytle Farms, Inc. Mix	84.7	82.9	41.1	3.5	1.42
J. Richard Alwine H	43.2	89.0	37.4	3.7	1.39
Calvin B. Mauser G	58.0	91.5	29.9	4.6	1.38
Floyd Feidt Mix	75.1	94.3	38.3	3.6	1.38
Grand View Farms H	59.7	70.6	36.5	3.7	1.35
Henry Keiter H	35.2	93.3	31.5	4.1	1.30
Franklin G. Wagner Mix	39.2	93.1	30.2	4.2	1.26
G.S. Huntzberger H	63.6	83.2	33.7	3.7	1.24
Donald Engle H	49.5	73.7	31.4	3.8	1.20
Gary E. Miller H	61.0	76.2	31.8	3.7	1.19
Harvey Schroll H	39.5	74.0	27.6	3.9	1.07
Stanley Wilt Mix	56.7	80.3	29.4	3.6	1.05

OWNER NAME OR NUMBER	AGE	LBS. MILK	% FAT	LBS. FAT
Bryncloed Farm 12 O	10-3	10,654	5.0	530
46 W	6-0	12,425	4.8	597
55 O	5-11	11,674	4.6	540
137	4-2	10,332	4.9	509
194	3-1	11,234	4.8	543
172	3-6	11,929	4.9	580
248	2-1	10,459	4.9	516

Conewago Farms Mickie	10-10	15,722	4.3	669
Helen	9-0	17,871	4.2	747
Hannah	8-4	15,763	4.4	698
Ardrea	7-10	15,678	4.3	673
Judy	7-8	15,383	4.3	666
Henreta	7-5	15,465	3.7	602
Karyl	5-7	14,735	4.8	703
Kate	4-3	15,704	3.9	615
Willow	4-2	20,212	3.3	663
Model	3-3	14,283	4.2	596
Amy	3-1	17,150	4.0	690
Ko Roda	3-5	16,829	3.4	566
Harriet	3-1	14,283	3.8	541
Sandra	2-7	14,511	3.5	511
Gr 15 A	2-1	15,039	3.5	531
Roxann	2-3	17,031	3.6	613
Kay	2-6	10,910	5.4	587
Earl E. Keefer Faith	5-2	16,879	3.7	617
Robert J. Schaffer Myrtle	9-10	21,515	3.7	796
Gloria	8-4	16,740	4.0	671
Pearl	4-2	16,777	4.5	750
Keyes	4-0	22,621	3.3	748
Ethel	3-2	19,915	3.3	658
Lebo Brothers Ardel	5-4	13,239	4.7	623
Rachel	4-11	12,185	5.0	614
Nyla	2-2	11,808	4.8	561
John Roy Book Amy	7-2	15,435	3.8	579
Eydie	5-5	16,549	3.4	564
Lee R. Sweigard Melba	8-1	22,131	3.6	786
Faith	5-10	14,691	3.7	547
Lytle Farms, Inc. Cupid	11-1	19,493	4.0	774
Nita	4-2	17,379	3.7	642
Paul L. Crissinger Harriet	7-10	25,561	4.0	1,013
Eileen	6-3	17,135	3.6	624
Vicki	5-8	17,896	4.3	762
Floyd Feidt Ellen	5-4	12,618	4.7	598
Profit	5-2	12,036	4.5	546
Fawn	4-4	14,678	3.8	558
Edie	3-4	11,794	4.4	516
Olympia	2-2	14,339	3.7	524
Malhon L. Lehman Penny	3-6	15,925	4.0	641
Dee Dee	3-3	15,549	4.0	626
Fern	2-2	17,558	3.7	655
Walter Schaffer Sandi	4-9	14,478	3.7	654
J. Melvin Brandt Dawn	9-8	16,128	3.2	523
Brenda 2	4-6	15,344	3.9	605
Sue	2-1	15,686	3.4	540
Sparkle	3-0	14,832	3.7	555

(Turn to Page 96)

THERMA•STOR HEAT RECOVERY SYSTEM

BY DEC DARI-KOOL

With no end in-sight for skyrocketing energy costs, wise dairy farmers are investing in the very best in energy-saving equipment.

Make enough FREE HOT WATER to meet every hot-water need of almost any milking operation.

For the very best in VALUE and FREE HOT WATER, check out the DARI-KOOL

THERMA•STOR

- USES NO ELECTRICITY OR FUEL.
- PRODUCES AND STORES TWO TEMPERATURES OF "FREE" HOT WATER.
- FITS ANY EXISTING BULK-TANK COOLING SYSTEM.
- HEAT-EXCHANGE AND STORAGE SECTIONS—100 PERCENT STAINLESS STEEL.
- AVAILABLE IN 100 AND 170-GALLON MODELS.



Don't settle for less than the BEST. THERMA•STOR delivers the BEST in workmanship, dependability, and in performance—PLUS "FREE" HOT WATER.

LANDIS FARMSTEAD AUTOMATION
Milton, Pa.
(717) 437-2375

JONES DAIRY SERVICE
Lester Jones, Jr.
Medford, N.J.
(609) 267-5246

LLOYD E. KREIDER CO.
Cochranville, Pa.
(215) 932-4700

LAWTON'S DAIRY EQUIP. & REFRIGERATION
Wellsboro, Pa.
717-724-3015

SANER FARM SYSTEMS
McAlisterville, Pa.
(717) 463-2606

CUMBERLAND DAIRY SERVICE
Larry Hughes
Chambersburg, Pa.
(717) 263-0826

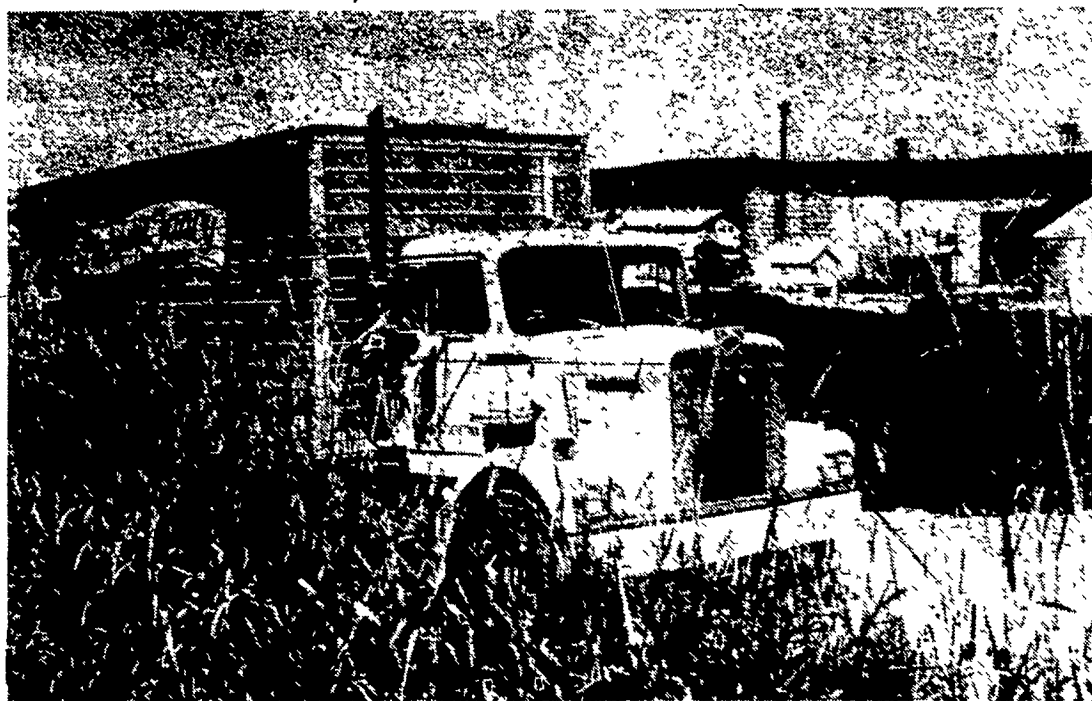
SHENK'S FARM SERVICE
Lititz, Pa.
(717) 626-1151

Good News Grain Farmers

Plain and Fancy Ag Enterprises Inc. has increased the size of its Tamaqua Grain Operation. This increase means greater ease of operation for you. Unload time is now 2,500 bu./hr., Storage

Capacity is now 200,000 bu. and Trucking Services are also available.

If we can be of service to you, see us at RD 3, Tamaqua, PA 18252, or call us at 717/386-4597.



Plain and Fancy AG. ENT. INC.