

Farm-city tours report record attendance

By KENDACE BORRY
LITITZ — Chester, Berks, and Lancaster County all reported excellent turnouts and huge successes in the farm-city tours which the Farmers' Associations sponsored. Both the farmers involved in showing their farms and the visitors

viewing the agricultural operations seemed well pleased with the tours.

On one farm in Lancaster County, there were a reported 1500 to 2000 people present over the two day period, with all the farms having at least one thousand

visitors, a group that was called "fantastic".

"The people touring were courteous and very interested," Mrs. Marsha Barley, Lancaster R2, told of the visitors. "The farmers were pleased all around, and the people seemed fascinated with modern farming.

The visitors at the different stops had op-

portunities to see a calf born, take a hay ride, and tour a new poultry house, among other things.

At the J. Harold Musser farm, Mount Joy; the Omelet King was present, and on the first day 500 omelets were handed out. The crowd was so large the second day of the tour that the omelets were cut in thirds to accommodate everyone.

Potatoes were given out at the Clyde K. Eshelman Farm, Lancaster, and he estimated that between the two days visitors, he handed out close to a ton of potatoes.

One family toured some of the farms on bikes, riding them from Lancaster City. When asked why they rode their bikes to the farms, they related that they had wanted to tour the farms and that bikes were the only transportation that they had to get there.

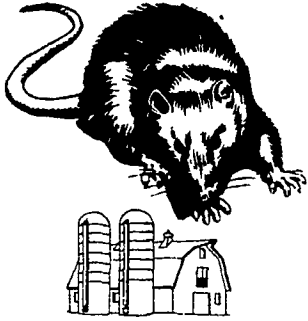
Visitors from foreign countries were also present, with guests signing the registers from Germany, Poland, and the Phillipines, as well as all over the United States.

In Berks County, a very positive report of the ac-

tivities was also given. The fifth year for the tours in that county, the group is already thinking about trying to get more farmers involved next year to make a success even better. People who came, loved it, was the way one man put it. The group, both the farmers and the visitors were all well pleased. The children who came to the farms seemed to especially get a thrill out of the farm animals. Everything went very well indeed, he added.

And in Chester County, the same happy story was told. Large crowds were present at the different farms, with the largest group attendance of any year reported. Both the farmers and the visitors were happy with the tour results.

ATTENTION FARMERS... FREE ESTIMATES ON RODENT CONTROL



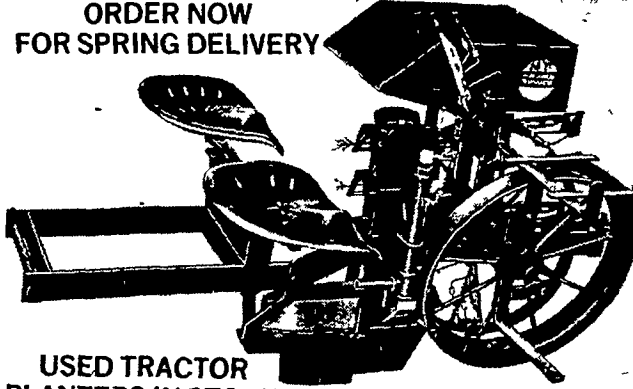
RODENTS carry diseases which can endanger the health of your flocks. Your business is raising the flocks. Ours is protecting them.



1278 Loop Rd.
Lancaster, Pa. 17604
717-397-3721

Since 1928
Pest control is too important
to trust to anyone else

MECHANICAL TRANSPLANTER
ORDER NOW FOR SPRING DELIVERY



USED TRACTOR PLANTERS IN STOCK

- New Amazing "Flo-Check" Water Valve (Patented) with Magic Air Control to assure uniform water supply to the plants regardless of water level in barrel.
- New Manual Shutoff with Automatic Roller Reset on Valve
- Positive Action, Self-Cleaning, Neoprene Plant Grippers.
- Bronze Oilite Main Bearings
- Large Adjustable Plant Trays.

Lancaster County's only dealer specializing in Sprayer Sales and Service.

LESTER A. SINGER

RONKS, PA PHONE (717) 687-6712
Eves. & Sats. (717) 687-7116

HOG PRODUCERS!

Get Top Price for Your Hogs at New Holland



Sold in sorted lots the auction way. See them weighed and sold and pick up your check.

SALE EVERY MONDAY - 8:00 A.M.

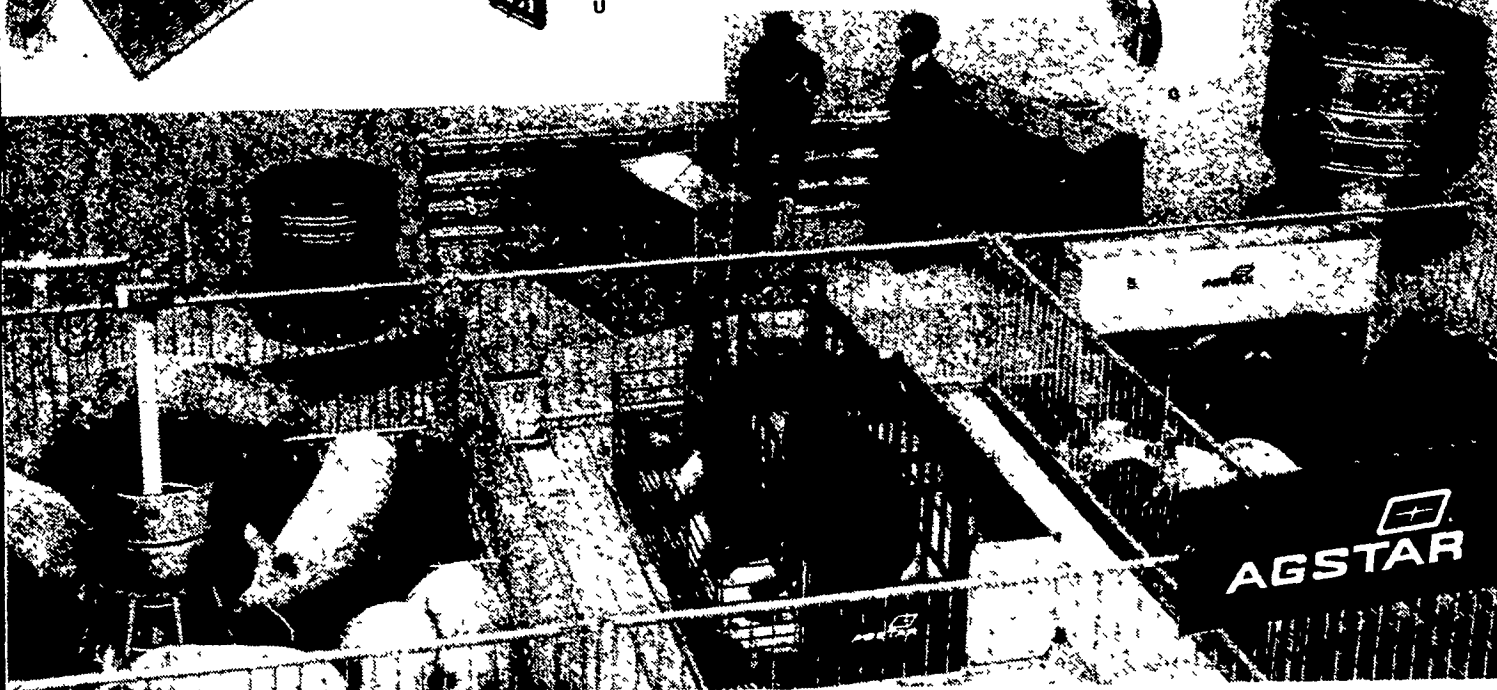
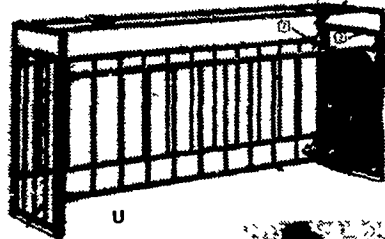
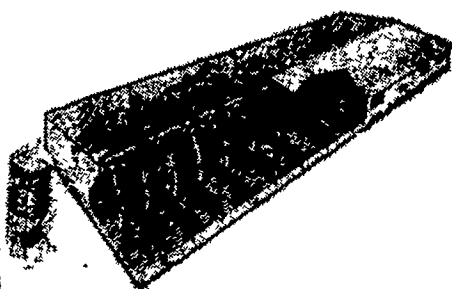
NEW HOLLAND SALES STABLES, INC.

Phone 717-354-4341
Daily Market Report - Phone 717-354-7288
Abe Diffenbach, Manager

THE SYSTEMS PEOPLE

AGSTAR
The Quality ...

- ★ LIVESTOCK EQUIPMENT
- ★ ENVIRONMENTALLY CONTROLLED BUILDINGS FOR
 - Farrowing • Fattening • Growing
 - Nursery • Gestation
- ★ CALF AND VEAL CASTLE
- ★ PITLESS OR SELF-CONTAINED



AGSTAR BUILDINGS AND EQUIPMENT

- A. Modular 24-ft. wide farrowing finishing, & gestation buildings.
- B. Modular 12-ft. wide farrowing nursery & gestation buildings.
- C. Lot or pasture fountains.
- D. Hog lot gates & partitions.
- E. Heavy duty hog & cattle waterers.
- F. Big capacity feeders.
- G. Ventilation equipment.
- H. Round feeders.
- I. Feed delivery systems.
- J. Galvanized vertical pen partitions.
- K. Hog troughs.
- L. Porcelainized Steel slats.
- M. Rotary feeders.
- N. Porcelainized watering cups.
- O. Baby pig feeders.
- P. Farrowing stalls & pens.
- Q. Pig heaters.
- R. Nipple waterers.
- S. Space-saver nursery feeders.
- T. Flex auger systems & feed bins.
- U. Gestation stalls & buildings.

- ★ We Sell, Service & Install.
- ★ Full Line Parts Department.

AGSTAR ENVIRONMENTALLY CONTROLLED BUILDINGS ARE ONE OF THE MOST COMPETITIVE COST PER ANIMAL SYSTEMS AVAILABLE ON THE MARKET TODAY!

EMHERR

EQUIPMENT, INC.

RD3, Sprecher Road
Willow Street, PA 17584
Lancaster Co.
717-464-3321

Please send me more information.

Name _____

Address _____

City _____

State _____ Zip _____

Phone _____