

Ladies Have You Heard?

By Doris Thomas

Lancaster Home Economist



HOLIDAY STAIN REMOVAL TIPS

In the excitement of the holidays there's bound to be a spilled liquid or a dripping candle that can cause a spot or stain. So plan now to buy a few basic items to help with stain removal emergencies. You will need paper towels, cleaning fluids, a sponge, oxygen bleach, chlorine bleach, petroleum jelly and an enzyme pre-soak.

The key to stain removal is immediate treatment. When company is present and a spill occurs use paper towels to absorb as much of liquid as possible. Soak a sponge in cool water and use it to remove further traces of the spill. Later, you can get down to the business of final stain removal.

Test any stain remover on a corner of fabric first to see how it reacts. Treat spots from the back of the fabric. Place the spot downward on some paper towels so that the stain will come off the fabric instead of going through it. After treatment, regular laundering will usually remove the last traces of the stain.

Here are some special methods for treating the most common holiday-type stains.

Sponge fruit stains, including cranberries, immediately with cool water. Later soak in warm water and enzyme pre-soak. Then launder. If possible, launder again using chlorine bleach.

For gravy or milk stains, work a paste of detergent and water into the stain. If a greasy stain remains after laundering, sponge with a dry-cleaning solvent. Soak coffee or tea stains in warm water and an enzyme pre-soak or oxygen bleach and launder.

For candle wax spots, scrape off as much wax as possible. Then place the stain between layers of paper towels and press with a warm iron. Next, place the stain face downward on paper towels and sponge the back with drycleaning solvent. Launder when dry.

For lipstick spots, rub undiluted liquid detergent into the stain until outline of stain is removed. If after laundering, stain remains, sponge with drycleaning solvent.

ANTI-FREEZE FASHIONS FOR LEGS

Well dressed legs will be layered for warmth and fashion this season. Warm-ups go from tights to anklets plus knee-highs, over-the-knee styles, thigh-highs and leggings.

Feet are treated to fashionable comfort with eye-catching slipper socks and warm-up boots. See them in quilts, bulky knits and acrylic pile linings. For example, there's a pile-lined boot with nylon-quilted upper and vinyl bottom that's completely washable.

Texture and pattern are keynotes with flat knits, ribs, bulkies, cables, open weave pointelles, and diamond cuts heading the list. Colorful tweeds, argyles, glitters, stripes, sweater patterns,

Farm Women Calendar

November 18

Lancaster Co. Society 3 meeting, 2 p.m. at Salem U.C.C., Mrs. Jack Lee, hostess

Lancaster Co. Society 8 meeting, 2 p.m. hosted by Ruth Drager, Marietta

plaid window pane checks and menswear looks create fashion sizzle.

Combinations are mixed and matched. Layer thigh-highs over textured pantyhose, anklets and argyles over tights; wear a colorful boot topper with cropped or mid-calf boots. It's an anything goes season of electrifying leg looks warm, cozy, fun to wear!

R1 Speaker is Dr. Carl Frey

Lancaster Co. Society 12 meeting, 1 p.m. hosted by Dorothy Sangrey

Lancaster Co. Society 18 meeting, 1:30 p.m.

MIYWW state competition in State College

Monday, November 20

Lancaster Co. Society 29 meeting, 7:30 p.m. hosted by Doris Shenk.

Lancaster Co. Society 30 meeting, 7:30 p.m. hosted by Sharon Keperling, Terre Hill. Craft program planned

Lancaster Co. Society 31, 7:30 p.m. hosted by Janet Badger, Craft night planned.

Tuesday, November 21

Berks Co. Society 3 meeting.

7 p.m. at Planetary at Jr. High East. Meeting to follow at Mary Hill's, Boyertown.

Berks Co. Society 6 meeting at Mrs. Earl Hoffman's, Oley. Crafts program planned.

Dauphin Co. Society 16 birthday party and fun night.

Lancaster Co. Society 27 meeting, 7 p.m. Roller skating at Mt. Gretna

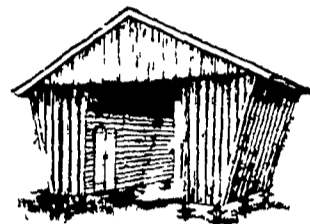
Lebanon Co. Society 14 meeting, 7:30 p.m. at Mrs. Paul Engle's, Palmyra R2.

Saturday, November 25
Lancaster Co. Society 4 luncheon at Lacy's Restaurant, 12:30 p.m. Tour of Donegal Mills Plantation at 1:45 p.m.

Lancaster Co. Society 5 meeting hosted by Kathryn Eichelberger.

A building with almost unlimited possibilities . . .

1700

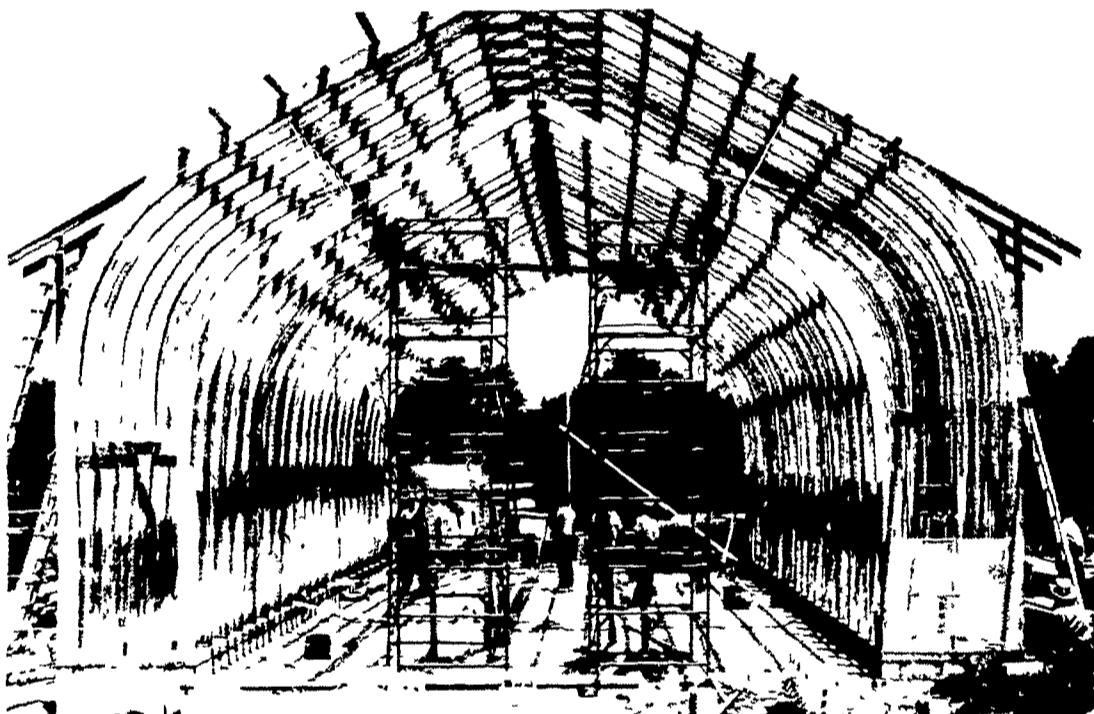


1830

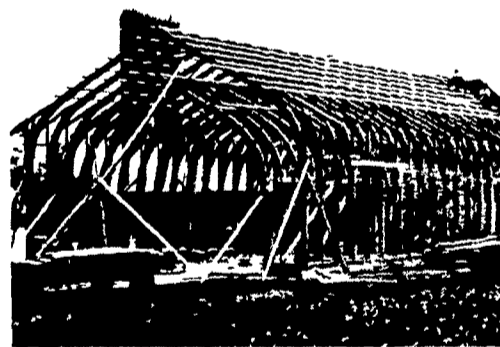
The Evolution of the American Corncrib

1977

Laminated Uni arch design makes all inside space useful — even close to walls and permits economical installation of roofing and siding materials



Large Volume Grain and Storage Implement Building



Beginning with the earliest American farms, corn on the cob was seasoned and dried by allowing air to flow around it; this kept away mold.

From simple, square cribs of alternately piled logs, covered by a sloping roof, the corncrib evolved to the drive-in crib. The sidewalls always slanted outward at the eaves. On a great many mountain farms this was the beginning of barn architecture, for by adding doors in the driveway wall, you have the simplest American barn.

Today, a much more efficient structure for the storage of corn — along with large farm implement storage — is provided by the imaginative use of the Laminated Rafter. The exceptional strength of this aesthetically pleasing arch may be readily combined with simple construction, requiring a minimum amount of materials and erection time. It is a structure that permits great flexibility, because all inside space is useable, offering so many possibilities for a variety of farming needs.

Rigidply Rafters, Inc.
Structural Imagination for Today's Farming

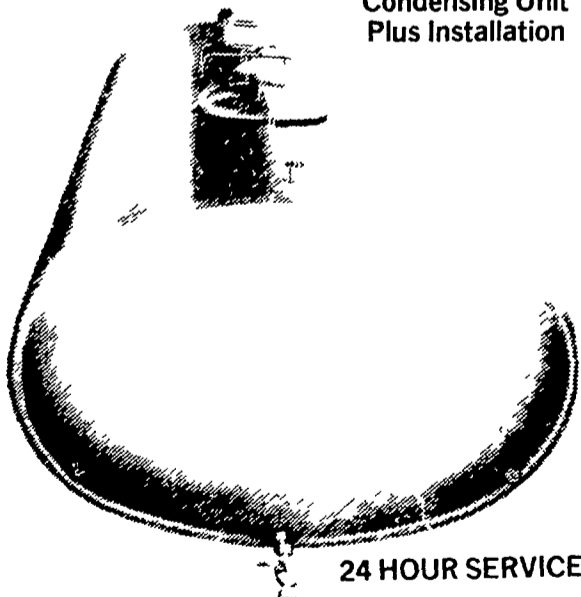
Telephone: (717) 866-6581

MANUFACTURERS of LAMINATED RAFTERS and WOOD ROOF TRUSSES

RICHLAND RD1, Pennsylvania 17087
OAKLAND RD2, Maryland 21550

FREE
Delaval offers a free AR tank washer with the purchase of any size bulk cooler
Now Through Dec. 15th

SPECIAL
800 Gal Tank
~~\$6400~~ **\$5900**
w/6 H.P. Condensing Unit Plus Installation



24 HOUR SERVICE

1-USED ZERO PIPELINE FOR 60 COWS, COMPLETE
\$5000⁰⁰



J. M. HORST SERVICE CO.
Box 231, Quentin, PA
Ph. (717) 274-1242

A building with almost unlimited possibilities

- ▶ Over 5,000 bushels ear corn storage
- ▶ Sheltered area to load and unload
- ▶ To hold against price fluctuations
- ▶ Convenient feed-preparation space
- ▶ Large equipment storage flexibility
- ▶ Up to 1,440 sq. ft. for other crops