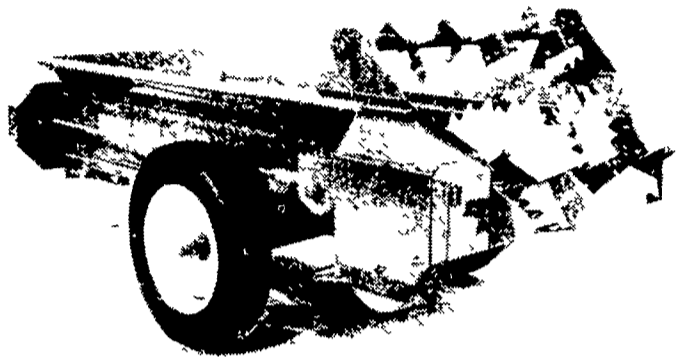
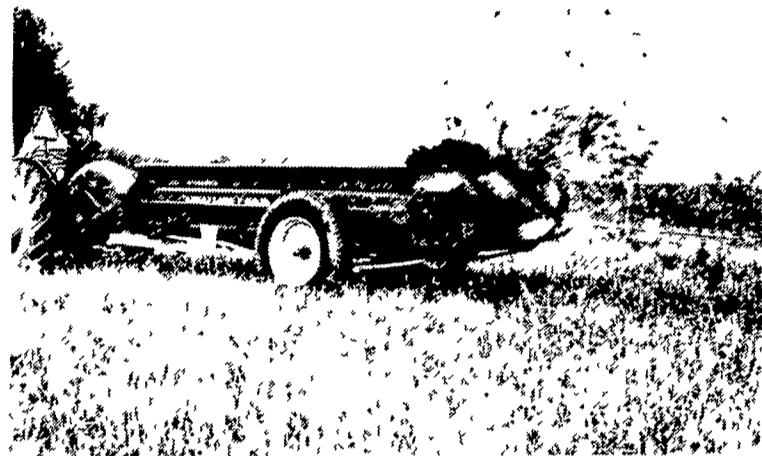


# THE STRONG-BOXES

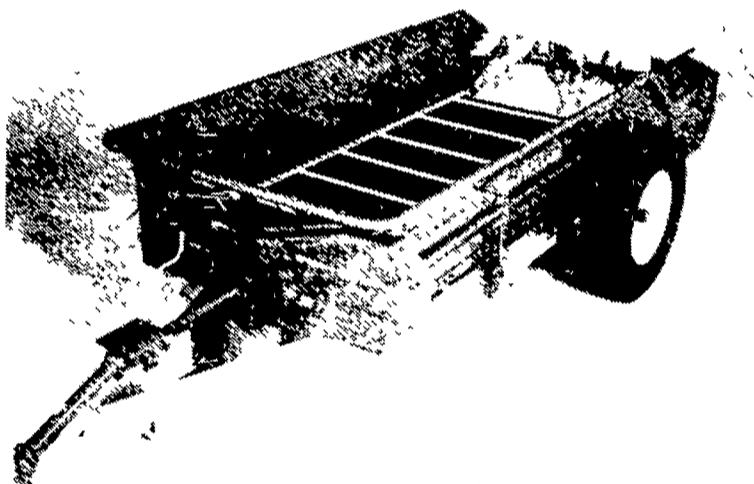
**More farmers buy 'em than any other kind!**



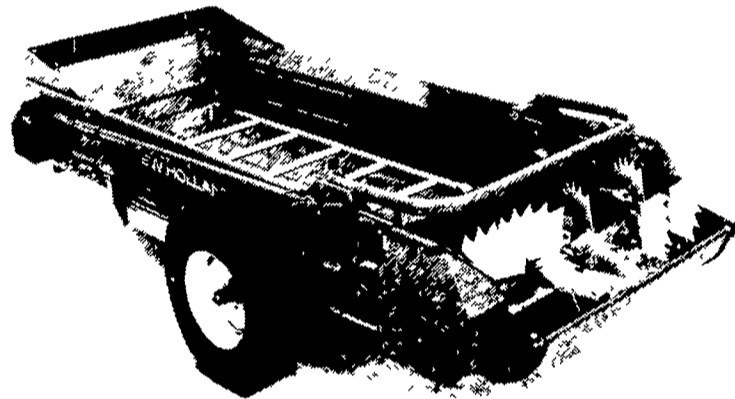
**MODEL 213**, shown with upper beater, does a fine job of topdressing Capacity 139 cu ft



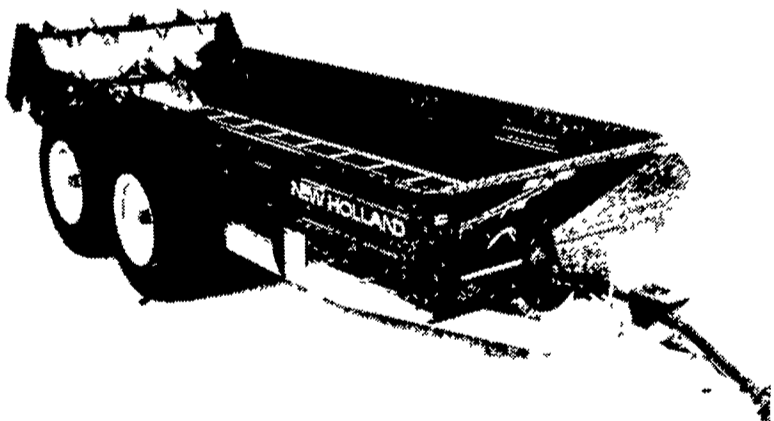
**MODEL 328**, shown with single beater, makes quick work of its 151 cu ft load. With upper beater, capacity is increased to 174 cu ft



**MODEL 513**, with single beater here, rips through tough, pen-packed loads Single-beater capacity: 180 cu. ft. Double-beater capacity: 215 cu. ft



**MODEL 519**, here equipped with hydraulic endgate, will spread either wet or dry manure without adjustment. Capacity 216 cu. ft. with single beater, 260 cu. ft. with double beater.



**MODEL 679**, shown with upper beater, lays down a fine, carpet-like top dressing Capacity 340 cu. ft with upper beater, 280 cu ft with single beater



**MODEL 791**, with upper beater here, spreads its 419 cu. ft. load in less than two minutes. Single-beater capacity; 342 cu. ft.



**FOR A DEMONSTRATION ON YOUR FARM,  
call your SPERRY NEW HOLLAND Dealer  
listed on the facing page.**

**Hard-To-Hurt Sides Are Backed  
By Hard-To-Beat Guarantee!**



**SPERRY NEW HOLLAND**

Bonded Protection by Sperry New Holland gives you new sides free if they ever rust through while the rest of the spreader is still operational Applies to any owner, not just the original buyer Capacities from 108 to 358 bushels