

# Livestock market and auction news

## St. Louis Cattle

**National Stockyards**  
November 8, 1978  
Receipts this week 4,300;  
week ago 3,400; year ago  
6,100.  
Compared to the previous  
weeks close, slaughter

steers and heifers .50 to  
mostly 1.00 lower. Cows and  
bulls firm to .50 higher.  
Slaughter supply mainly  
choice 2-4 1000-1200 lbs.  
steers, around 30 percent  
heifers, and 15 percent cows.  
**SLAUGHTER STEERS:**  
Mixed Choice and Prime 2-4  
1050-1250 lbs. 53.00-53.50, load  
Monday 53.75. Choice 2-4 975-

1275 lbs. 52.00-53.50, mostly  
52.00-53.00. Mixed Good and  
Choice 2-4 900-1200 lbs. 51.00-  
52.50. Good 2-3 900-1175 lbs.  
49.00-51.00. Standard to Good  
2-3 1050-1250 lbs. holsteins  
47.50-49.00.

**SLAUGHTER HEIFERS:**  
Mixed Choice and Prime 2-4  
875-1050 lbs. 51.50-52.00,  
couple loads 3-5 1030-1145 lbs.  
50.25 and 51.00. Choice 2-4  
800-1050 lbs. 50.00-51.50.  
Mixed Good and Choice 2-3  
700-975 lbs. 48.50-50.00. Good  
2-3 700-950 lbs. 45.00-48.50.

**COWS:** Utility and  
Commercial 2-4 37.50-41.00.  
Bonning Utility 1-2 41.00-42.00,  
few 42.50. Cutter 1-2 36.50-  
40.00. Canner and low Cutter  
1-2 33.00-36.50.

**BULLS:** Yield Grade 1-2  
1000-1750 lbs. 43.00-48.50.  
Yield Grade 1 1450-1800 lbs.  
49.00-50.00, part load 1300 lbs.  
at 50.50

**FEEDERS:** (Including  
around 2,100 at regular  
Thursday auction. Feeder  
Steers steady to 2.00 higher,  
advance mainly on Choice  
thin weighing under 500 lbs.  
Feeder Heifers steady to 1.00  
higher. Demand continues  
good. Supply mainly Choice  
and mixed Good and Choice  
400-650 lbs. steers and 300-600  
lbs. heifers.

**FEEDER STEERS:**  
Choice 300-500 lbs. 68.25-  
75.00; 500-600 lbs. 65.00-70.25;  
600-650 lbs. 63.50-66.25; 700-  
800 lbs. 59.50-65.00. Mixed  
Good and Choice 63.00-67.00;  
500-600 lbs. 62.00-63.50.

**FEEDER HEIFERS:**  
Choice 300-500 lbs. 58.00-  
60.75; 500-660 lbs. 55.00-59.50.

Mixed Good and Choice 375-  
600 lbs. 52.00-56.25.

**STOCK COWS:** Couple lots  
Good and Choice 41.00-44.25.

**PAIRS:** Load and Choice  
stock cows and calf pairs  
457.50 per pair.

Market courtesy of USDA.

## Omaha Cattle

November 9, 1978

Compared with previous  
week's close - closing prices  
on slaughter steers were 25-  
50 cents lower, many Choice  
3-4 at full decline. Heifers  
closed 25-50 cents lower than  
late previous midweek or 50-  
75 cents off early Wednesday  
trade. Cows were mostly  
steady and bulls fully  
steady.

Four day receipts 13,700 as  
compared 13,900 previous  
week and 15,400 a year ago.

For the third successive  
week, prices on slaughter  
steers and heifers were  
forced downward as  
stagnated conditions con-  
tinued to dominate carcass  
trading. Most interests were  
in need of cattle for im-  
mediate slaughter  
requirements and while the  
day-to-day declines were not  
severe, the downward  
pressure was persistent until  
midweek; on Wednesday,  
steers regained a small  
portion of the early down-  
turn in a forced trade on  
small supplies. Yield grade  
was often a major price-  
determining factor as the  
overall finish of the steer and

heifer supply was attractive,  
but many consignments  
were mixed 3-4 yield grade  
over the past few weeks, the  
average weight of steers and  
heifers has increased some  
20-25 lbs. per head. There  
was some mild interest for  
two-way feeder steers, but  
most of the supply carried  
too much finish for  
profitable further feeding.  
Steers made up ap-  
proximately 37 pct and  
heifers 36 pct. Cows com-  
prised 9 pct and feeders 16  
pct.

**STEERS:** Early load  
Choice with few Prime 3 1071  
lbs. 54.25. At mid-week, load  
Choice and Prime 3-4 1166  
lbs. and load Choice 3 1220  
lbs. 53.50, load 1057 lbs. 53.25.  
Choice 2-4 975-1350 lbs.  
closed 52.25-53.25. Mixed  
Good and Choice 2-3 975-1250  
lbs. 51.25-52.00. Good 2-3  
47.00-51.00. Standard and  
Good 2-3 46.00-46.50.

Average of LS-214, detailed  
quotations, for Choice 900-  
1100 lbs. steers this week  
52.65; Choice 1100-1300 lbs.  
52.75. Average weight steers  
first three days 1162 lbs. as  
compared 1167 lbs. previous  
week. Average weight  
heifers first three days 1018  
lbs. as compared 1006 lbs.  
previous week.

**HEIFERS:** Two loads  
high-Choice and Prime 3-4  
985 lbs. 52.50 early. At  
midweek, two loads Choice 3  
1122 lbs. 52.25, three loads  
Choice and Prime 3-4 998-  
1036 lbs. 51.75-52.00. Choice 2-  
4 875-1050 lbs. 50.25-51.50.  
Mixed Good and Choice 2-3

850-1050 lbs. 49.00-50.50. Good  
2-3 46.50-48.50.

**COWS:** Utility and  
Commercial 2-4 38.50-40.50,  
few individuals 41.00. Cutter  
37.00-39.00; Canner and low-  
Cutter 35.00-37.50.

**BULLS:** 1-2 1400-2000 lbs.  
45.00-50.00, individual 1 51.00-  
52.00.

Market courtesy of USDA.

## Carlisle Auction

Carlisle, Pa.

November 7, 1978

**CATTLE:** Steers Choice  
52.00-53.75; Good 48.75-51.50;  
Standard 44.50-47.00. Cows:  
Utility & Commercial 42.35-  
43.60, Ind. 47.10; Cutter 38.60-  
42.00; Canner & Low Cutter  
30.25-37.00; Bulls Yield  
Grade No. 1 47.50-49.75.

**CALVES:** Prime 80.50-  
93.00 Choice 72.50-81.00;  
Good 65.00-74.00; Standard &  
Good 110-130 lbs. 60.00-71.00;  
90-110 lbs. 55.00-64.00;  
Holstein Heifers 103.00-  
130.00.

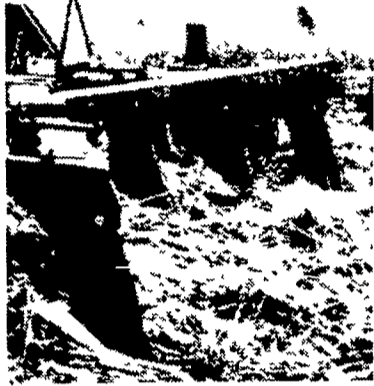
**HOGS:** US No. 1-2 49.50-  
52.10; US No. 1-3 47.75-49.75;  
Sows US No. 1-3 43.50-47.50.

**FEEDER PIGS** US No. 1-3  
20-35 lbs. 24.00-32.50 per  
head, No. 1-3 35-50 lbs. 34.00-  
44.50.

**SHEEP:** Good 56.50-57.00.



## Case 513 V CHISEL PLOW

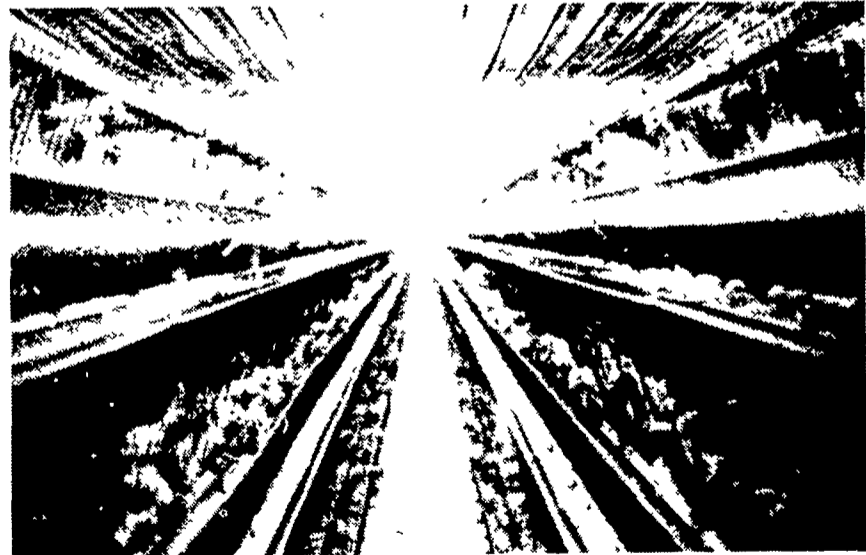
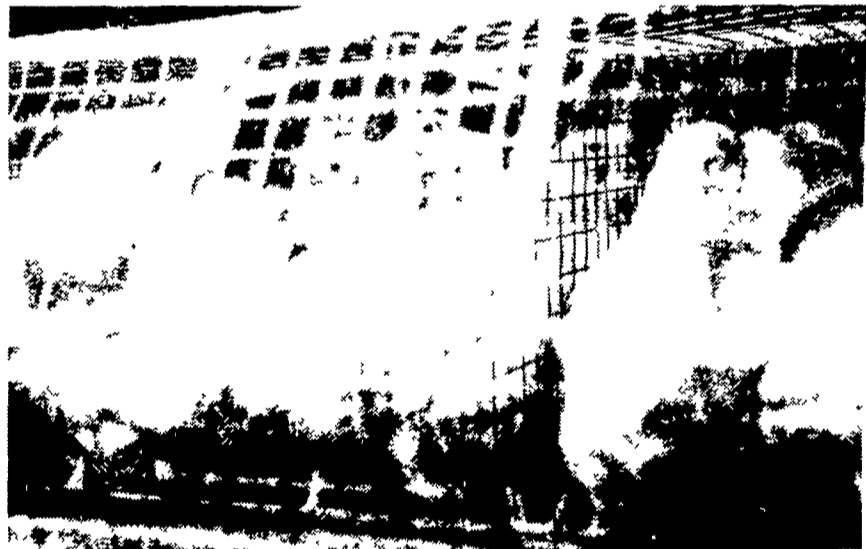


★ 7 SHANK  
★ 11 FOOT

\$1395

Here's a V chisel with the beef, clearance and heavy 1 1/4 x 30 inch shanks that will rip up tough hardpan and shatter subsoil to 18 inches deep. This deep chisel will let your fields breathe again. At irrigation water fall rains and winter snows soak down deep to mellow the soil, to store extra moisture against the summer's drought. It leaves the surface rough open and exposed to alternate freezing and thawing. Crop roots can penetrate deeper. Drainage is improved so you can start early in the spring - and seedbed preparation is easier and less expensive.

**A. L. HERR & BRO.**  
QUARRYVILLE, PA  
717-786-3521



## Purina Bio-Mittent Lighting Program

Early poultry experimental results indicated that layers did not have to have a constant or continuous amount of light during the light hours. It was demonstrated that if the lights were programmed in certain specific patterns, nearly equal production rates to a constant lighting program could be achieved.

The challenge to Purina researchers was to develop an intermittent lighting program that not only would give equal production rates, but would also improve feed efficiency. After four years of testing and modification, the Purina Bio-Mittent lighting program is now ready for both pullets and layers.

Tests show that Bio-Mittent lighting provides equal production rates to that achieved with a normal constant day length. However, in addition it can provide certain economics in electrical savings and feed efficiency. These are improvements that cannot be achieved on a program of constant daylight but are possible to have when the Bio-Mittent lighting program is used.

If you feel we may be of service, please call us at 768-3301 or 1-442-4183. We can only help.

JOHN J. HESS II, INC.  
SO. VINTAGE RD.  
PARADISE, PA 17562

