

# Open barrow show champions announced at KILE

By JOAN LIESAU

**HARRISBURG** - The Pennsylvania State University took many of the top honors November 6, at the Keystone International Livestock Exposition open barrow on-foot show.

Penn State exhibited the open reserve champion barrow on-foot, the reserve grand champion barrow on-foot, and the champion truckload of six hogs.

LaVern Weller & Sons of Dewight, Ill. showed the open and grand champion of the barrow show, along with the reserve champion truckload of hogs.

In the Berkshire division, Clayton D. Winebark & Sons of Rochester Mills, exhibited the champion barrow. Keith J. Martin, Hampstead, Md., showed the reserve champion Berkshire barrow.

The Chester White division was won by a James T. Parlett entry. Parlett, Airville, also showed the reserve.

The champion Duroc barrow was exhibited by LaVern Weller & Sons. Penn State University showed the reserve.

The champion and reserve champion barrow on-foot in the Hampshire breed was exhibited by Mrs. J.C. Strawbridge of Stewartstown.

The Poland China class was won by James T. Parlett. Parlett also showed the reserve champion.

The spotted swine class was won by Clair Hartman, Gratz, and the reserve champion was showed by Robert D. Strauss, Jr. of Ephrata.

Penn State showed both the champion and reserve champion in the Yorkshire barrow classes.

Daryl Sheiss exhibited the champion, and LaVern Weller & Sons, the reserve champion in the crossbreeds and purebred of other breeds contest.

The following is a list of breed results in the open barrow on-foot show:

## OPEN BARROWS ON-FOOT

### BERKSHIRE

Single Barrow On-Foot Lightweight 195 to 210 pounds: 1. Clayton D. Winebark & Sons, Rochester Mills; 2. James E. Martin, Hampstead, Md.; 3. Dennis L. Grumbine, Myerstown; 4. Terry L. Bennecoff, Kutztown; 5. Keith J. Martin.

Single Barrow On-Foot Mediumweight 211 to 225 pounds: 1. James E. Martin; 2. Clayton D. Winebark & Sons; 3. Darren L. Grumbine; 4. James E. Martin; 5. Rustic Haven Farm, Nathaniel P. Sheffer, East Berlin.

Single Barrow On-Foot Heavyweight 226 to 240 pounds: 1. Keith J. Martin; 2 and 3. Clayton D. Winebark & Sons; 4. Keith J. Martin; 5. Rustic Haven Farm, Joseph M. Sheffer, East Berlin.

Champion Barrow On-Foot - Berkshire, Clayton D. Winebark & Sons

Reserve Champion Barrow On-Foot - Berkshire, Keith J. Martin.

### CHESTER WHITE

Single Barrow On-Foot Lightweight 195 to 210 pounds: 1. and 2. Rodger Bankert; Hanover; 3. Keith J. Martin; 4. and 5. James T. Parlett, Airville.

Single Barrow On-Foot Mediumweight 211 to 225 pounds: 1. James T. Parlett; 2. Charles E. Griest, Abbotstown; 3. James T. Parlett; 4. Keith J. Martin.

Single Barrow On-Foot Heavyweight 226 to 240 pounds: 1. and 2. James T. Parlett.

Champion Barrow on foot - James T. Parlett.

Reserve Champion Barrow On-Foot - James T. Parlett.

### DUROC

Single Barrow On-Foot Lightweight 195 to 210 pounds: 1. Penn State University, University Park; 2. LaVern Weller & Sons, Dwight, Ill.; 3. Penn State University; 4. Dutch Valley Farm, Manheim, Pa.; 5. Penn State University.

Single Barrow On-Foot Middleweight 211 to 225 pounds: 1. LaVern Weller & Sons; 2. Penn State University; 3. Daryl Sheiss, Chambersburg, Pa.; 4. Penn State University; 5. Hess Durocs, Smithsburg, Md.

Single Barrow On-Foot Heavyweight 226 to 240 pounds: 1. LaVern Weller & Sons; 2. Lazarus Brothers, Germansville; 3. Dutch Valley Farm; 4. Christine Klinedinst, Wrightsville; 5. David Hartman, Gratz.

Champion Barrow On-Foot, LaVern Weller & Sons.

Reserve Champion Barrow On-Foot, Penn State University.

### HAMPSHIRE

single Barrow On-Foot Lightweight 195 to 210 pounds: 1. Mrs. J.C. Strawbridge; 2. Strawbridge & McCleary, Stewartstown; 3. Mrs. J.C. Strawbridge; 4. Strawbridge & McCleary; 5. Todd L. Bennecoff, Kutztown, Pa.

Single Barrow On-Foot Mediumweight 211 to 225 pounds: 1. Mrs. J.C. Strawbridge; 2. Strawbridge & McCleary; 3. Blue Mt. View Farms, Annville; 4. Ward Chapin Montgomery, Mich.; 5. Terry L. Bennecoff.

Single Barrow On-Foot Heavyweight 226 to 240 pounds: 1. and 2. Mrs. J. C. Strawbridge; 3. and 4. Strawbridge & McCleary; 5. Blue Mt. View Farms.

Champion Barrow On-Foot - Hampshire: Mrs. J.C. Strawbridge.

Reserve Champion Barrow On-Foot - Hampshire. Mrs. J.C. Strawbridge.

### POLAND CHINA

Single Barrow On-Foot, Lightweight 195 to 210 pounds: 1. James T. Parlett; 2. Keith J. Martin; 3. James E. Martin; 4. James T. Parlett.

Single Barrow On-Foot, Mediumweight 211 to 225 pounds: 1. and 2. James T. Parlett; 3. Keith J. Martin, Hampstead, Md.

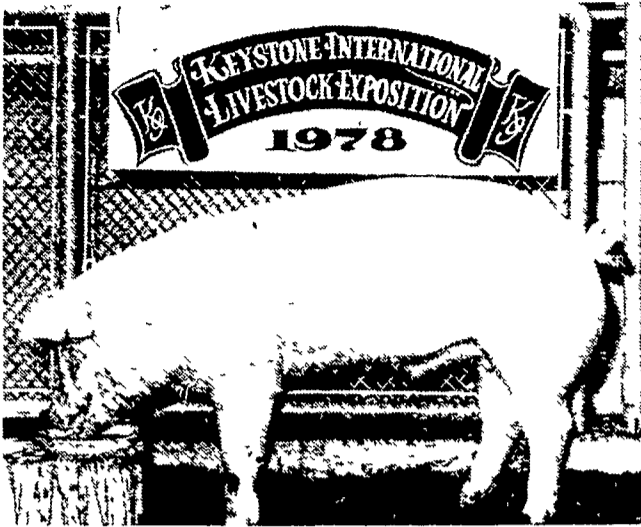
Single Barrow On-Foot, Heavyweight 226 to 240 pounds: 1. and 2. James E. Martin.

Champion Barrow On-Foot, James T. Parlett.

Reserve Champion Barrow On-Foot, James T. Parlett.

### SPOTTED SWINE

Single Barrow On-Foot, Lightweight 195 to 210 pounds: 1. Clair Hartman; 2. and 3. Robert D. Strauss, Jr., Ephrata; 4. D.L. Grimes & Son, Paris, Ohio; 5. Clair Hartman



James Y T. Parlett, Airville, exhibited the Chester White grand champion on-foot in the open barrow class at Keystone International Livestock Exposition, November 6.



Mrs. J.C. Strawbridge, Stewartstown, exhibited the Hampshire champion barrow on-foot in the open barrow class at the Keystone International Livestock Exposition. The barrow show was on November 6.

Single Barrow On-Foot, Mediumweight 211 to 225 pounds: 1. Leslie D. Lazarus, Whitehall; 2. Denton L. Griest; 3. Robert D. Strauss, Jr.

Single Barrow On-Foot, Heavyweight 226 to 240 pounds: 1. Robert D. Strauss, Jr.; 2. D.L. Grimes & Son; 3. Robert D. Strauss, Jr.; 4. Lazarus Brothers; 5. Robert D. Strauss, Jr.

Champion Barrow On-Foot - James T. Parlett.

Reserve Champion Barrow On-Foot - James T. Parlett.

### YORKSHIRE

Single Barrow On-Foot, Lightweight 195 to 210 pounds: 1. Penn State University; 2. Strawbridge & McCleary; 3. Weller Brothers; 4. Penn State University; 5. Strawbridge & McCleary.

Single Barrow On-Foot, Mediumweight 211 to 225 pounds: 1. and 2. Penn State University; 3. Strawbridge & McCleary; 4. Penn State University; 5. Strawbridge & McCleary.

Single Barrow On-Foot, Heavyweight 226 to 240 pounds: 1. and 2. Strawbridge & McCleary.

Champion Barrow On-Foot, Penn State University.

Reserve Champion Barrow On-Foot, Penn State University.

### CROSSBREEDS AND PUREBREDS OF OTHER BREEDS

Single Barrow On-Foot, Lightweights 195 to 210 pounds: 1. Strawbridge & McCleary; 2. Penn State University; 3. Strawbridge & McCleary; 4. Penn State University; 5. Daryl Sheiss.

Single Barrow On-Foot, Mediumweight 211 to 225 pounds: 1. Daryl Sheiss; 2. Strawbridge & McCleary; 3.

James T. Parlett; 4. Penn State University; 5. Strawbridge & McCleary.

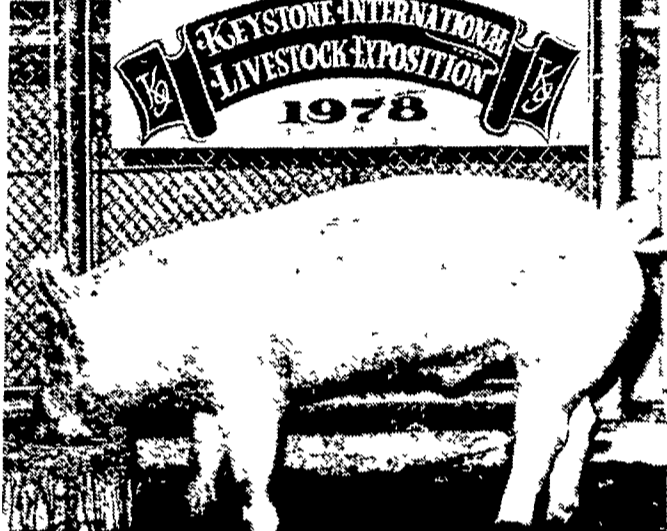
Single Barrow On-Foot, Heavyweight 226 to 240 pounds: 1. LaVern Weller & Sons; 2. Dutch Valley Farm, 3. and 4. Ward Chapin, Montgomery, Mich.; 5. Strawbridge & McCleary.

Champion Barrow On-Foot, Daryl Sheiss.

Reserve Champion



The champion barrow on-foot in the spotted swine division was exhibited by Clair Hartman, Gratz, at the Keystone International Livestock Exposition.



The champion barrow in the crossbred and purebred of other breeds division was exhibited by Daryl Sheiss, Chambersburg. The open barrow on-foot show was held November 6 at the Keystone International Livestock Exposition, Harrisburg.

Barrow On-Foot, LaVern Weller & Sons.

Open Champion Barrow On-Foot, LaVern Weller & Sons.

Open Reserve Champion Barrow On-Foot, Penn State University.

Grand Champion Barrow On-Foot, LaVern Weller & Sons.

Reserve Grand Champion

Barrow On-Foot, Penn State University.

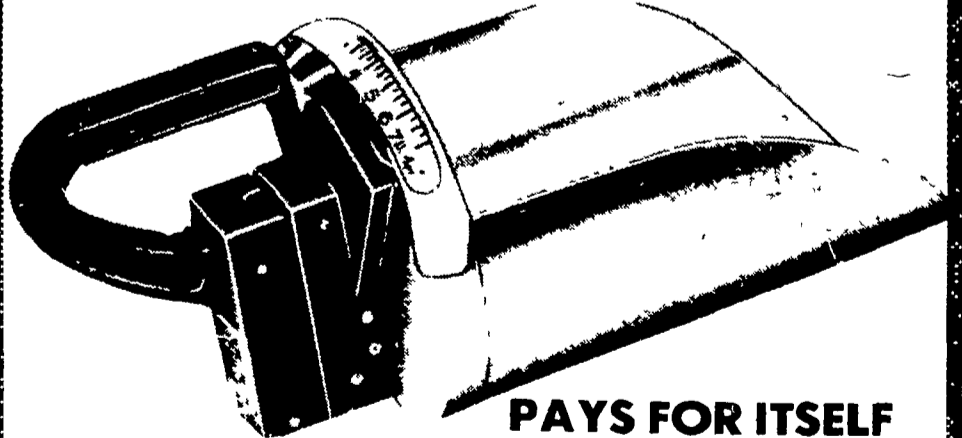
Truckload of 6 Hogs 195-215 lbs. Penn State University.

Truckload of 6 Hogs 216-240 lbs., LaVern Weller & Sons.

Champion Truckload, Penn State University.

Reserve Champion Truckload, LaVern Weller & Sons.

# SCALE SCOOP



**PAYS FOR ITSELF MANY TIMES OVER**

**AARON S. GROFF & SON**  
**FARM AND DAIRY SUPPLIES**

HOFFMAN PRODUCTS TARP REPAIRING

Ephrata, R.D. 3, Pa. 17522

Phone (717) 354-4631

Store Hours: 7 A.M. to 9 P.M.

Closed Tues., Wed. & Sat. at 5:30 P.M.