



Harford County Farm Bureau President C. Darrel Comer, left, and the association's vice president, James B. Reeves, right, and Lancaster Farming editor, Dieter Krieg, participated in the 56th annual banquet meeting of Maryland's third largest membership county

Harford County

(Continued from Page 63) actions to bring government regulations under control.

Holloway, a Darlington area cattleman, urged the assembled farmers to continue to back their association. Bringing related messages for continued involvement and initiative were Karen Markline, vice president of the North Harford FFA Chapter; Mary Streett, Harford County and Maryland State Farm Queen, and Dieter Krieg,

editor of Lancaster Farming, guest speaker.

Miss Markline, who this week represented 15 eastern regional states as a finalist in a public speaking contest at the National FFA Convention, delivered her speech, entitled "The Great American Farmer."

Miss Streett told of her activities since having been named Maryland State Farm Queen at the Maryland State Fair last August.

Krieg, who emigrated to

the United States from Germany 23 years ago, pointed out some of the declining values being experienced in this country and considered farmers to be one of the most important strongholds for the preservation of the nation's positive values.

He urged the farmers to take the initiative for better government, protection of their lands, incomes, and way of life. He said that as members of the nation's largest farm organization they have already taken a step towards making positive public relations

December milk price \$12.96

ALEXANDRIA, Va. — Middle Atlantic Order Market Administrator Joseph D. Shine recently announced a Class I milk price of \$12.96 per hundredweight for December 1978. Mr. Shine said that the price is up 28 cents from November

and is \$1.44 cents higher than the December 1977 Class I price. The Class I price increased 85 cents from September 1978 to December 1978.

Order No. 4 prices are announced for milk testing 3.5 per cent butterfat, f.o.b. plants located within 55 miles of Philadelphia, Pa. and also within 75 miles from the nearer of Washington, D.C. or Baltimore, Md. There is also a 6-cent direct-delivery differential applicable to producer milk received at plants located within 55 miles of Philadelphia.

Mr. Shine announced a

Class II milk price of \$10.26 per hundredweight for October 1978 and a butterfat differential of 13.3 cents. The Class II milk price is up 28 cents from the previous month.

These class prices are based on the October 1978 Minnesota-Wisconsin manufacturing milk price of \$10.18 per hundredweight adjusted to a 3.5 per cent butterfat content.

The USDA reported that the wholesale price of Grade A butter at Chicago for October was \$1.1564 per pound and the nonfat dry milk price was \$.7361 per pound, f.o.b. plants in the Chicago area.

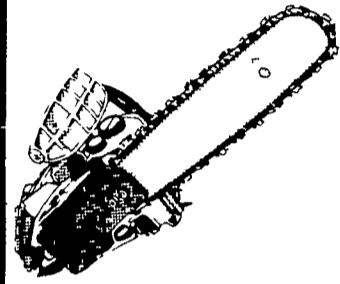
programs a part of their business.

Taking note of the placemats that were provided for the dinner by the Farm Credit Association, the speaker took one and declared they proclaimed two important messages: "Farming Is Everybody's Bread and Butter" and "Spread the Word."

"For farmers," Krieg noted, "the more important message is the latter. I hope you will continue to spread the word," he concluded.

In other activities during the dinner meeting, special awards were presented to members for their services at an association picnic last Summer, and five new directors were elected. The new directors are Bill Hanna, Whiteford; Bob Kelly, Darlington; Charles Birch, White Hall; John Schenning, Bel Air; and Pierce Grafton, Forest Hill.

CHAIN SAWS



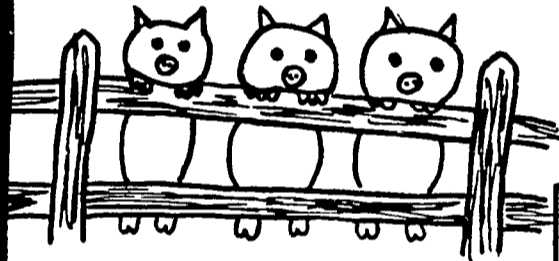
Five models, 30 to 70 cc's. Sprocket-nose guidebar, 12 to 24 inches. Automatic oiler. Counterbalanced cranks-haft. Most models also have an isolated engine for more operating comfort. See us for details

ENFIELD EQUIPMENT INC.

Whiteford, Md. 21160 Phone: 301-452-5252

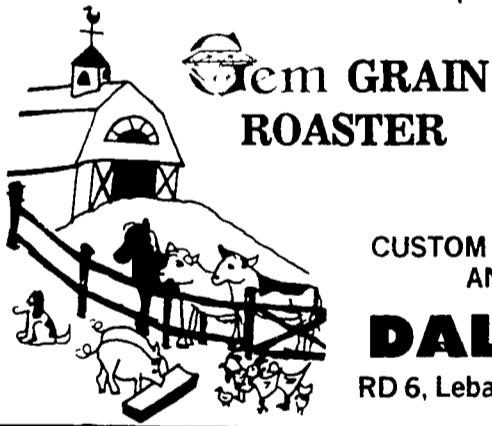
SOYBEAN ROASTING ON YOUR FARM

**CONTACT US NOW
WE'LL DRY YOUR CORN
RIGHT FROM THE FIELD**



This little piggy went to market,
This little piggy stayed home,
This little piggy had
ROASTED SOYBEANS

**FEED YOUR
ANIMALS A TOTAL
ROASTED GRAIN DIET.**



**Gem GRAIN
ROASTER**

Roasts all grains,
(corn, beans, wheat,
barley, oats).

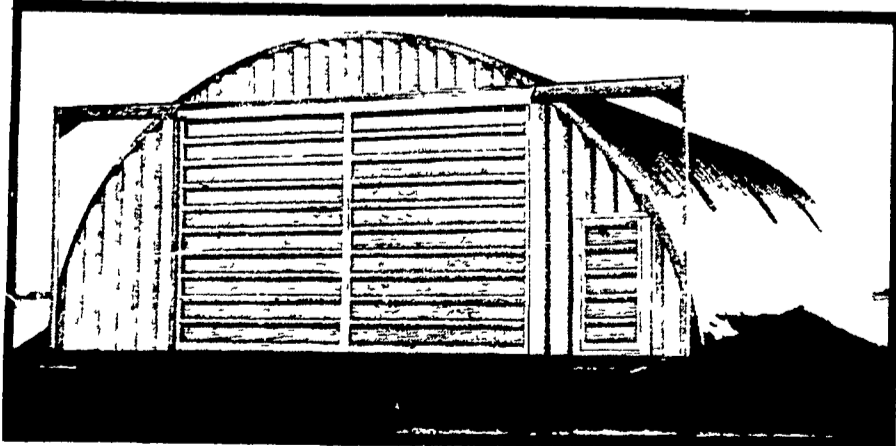
CUSTOM SOYBEAN ROASTING DONE IN PA.
AND SURROUNDING STATES

DALE L. SCHNUPP

RD 6, Lebanon, Pa. 17042 Ph: 717-865-6611

MID-ATLANTIC STEEL BUILDINGS

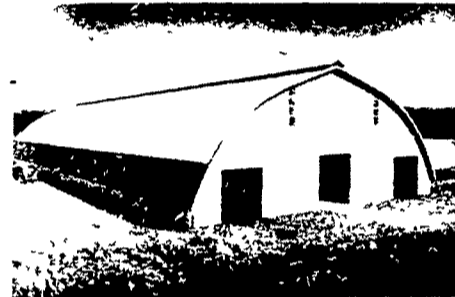
**FACTORY TO YOU COMPANY
FOR FARM - COMMERCIAL - INDUSTRIAL USE**



**MIRACLE SPAN
STEEL BUILDINGS**

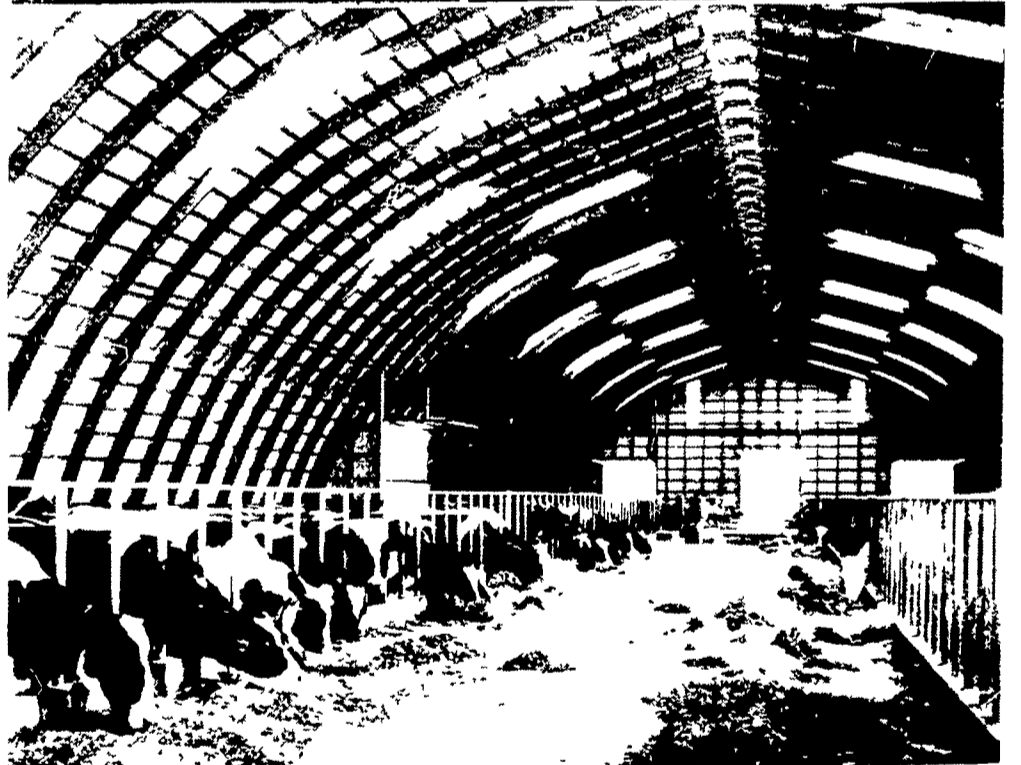


RD1, BOX 5, CHRISTIANA, PA 17509
(Lancaster County) PHONE: 215-593-5326



Laminated Rafters:

**The First Choice
for Economical Space
True Flexibility
and Total Satisfaction...**



Build your next building using dependable wood LAMINATED RAFTERS AND ROOF TRUSSES—and save time on your job by fast and easy erection.

COMPLETE MATERIALS FOR ALL FARM BUILDINGS

WE STOCK FABRAL STEEL AND ALUMINUM ROOFING

PROMPT DELIVERIES ON SITE CRANE SERVICE

Call for Information On Your Requirements

Today, wherever modernization with Free Sta Housing provides a very satisfactory day-to-day operation, Rigidply Laminated Rafters are the preferred choice. They provide much more space for the money plus fast, economical erection. Proper ventilation is provided without fans, preventing condensation and helping reduce odors. Sunlight and ventilation combine to provide a desirable working environment, heat and light for winter months and a healthy place for animals.

Telephone: (717) 866-6581



MANUFACTURERS of LAMINATED RAFTERS and WOOD ROOF TRUSSES
RICHLAND RD1, Pennsylvania 17087
OAKLAND RD2, Maryland 21550