

YOU'RE INVITED TO AN

Open House

TUESDAY, NOVEMBER 21, 1978

10:00 A.M. TO 3:30 P.M.

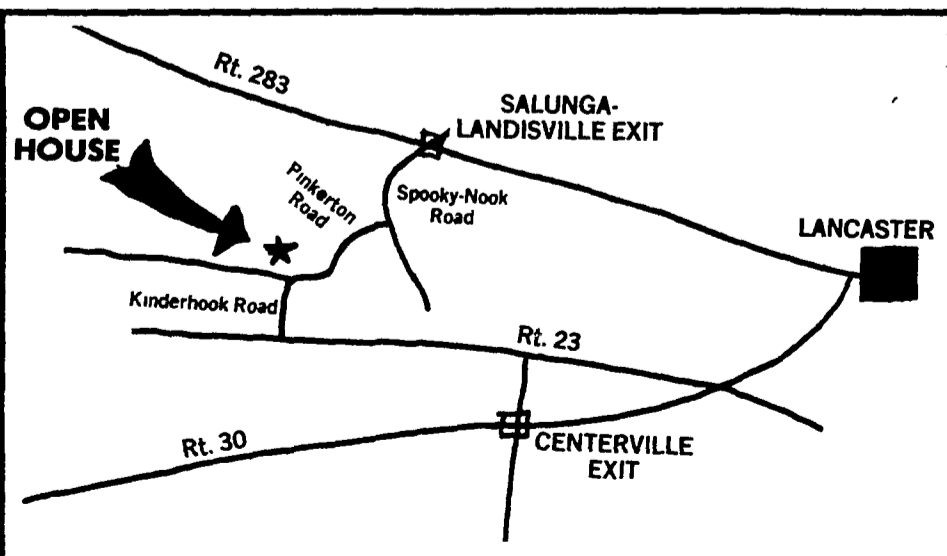
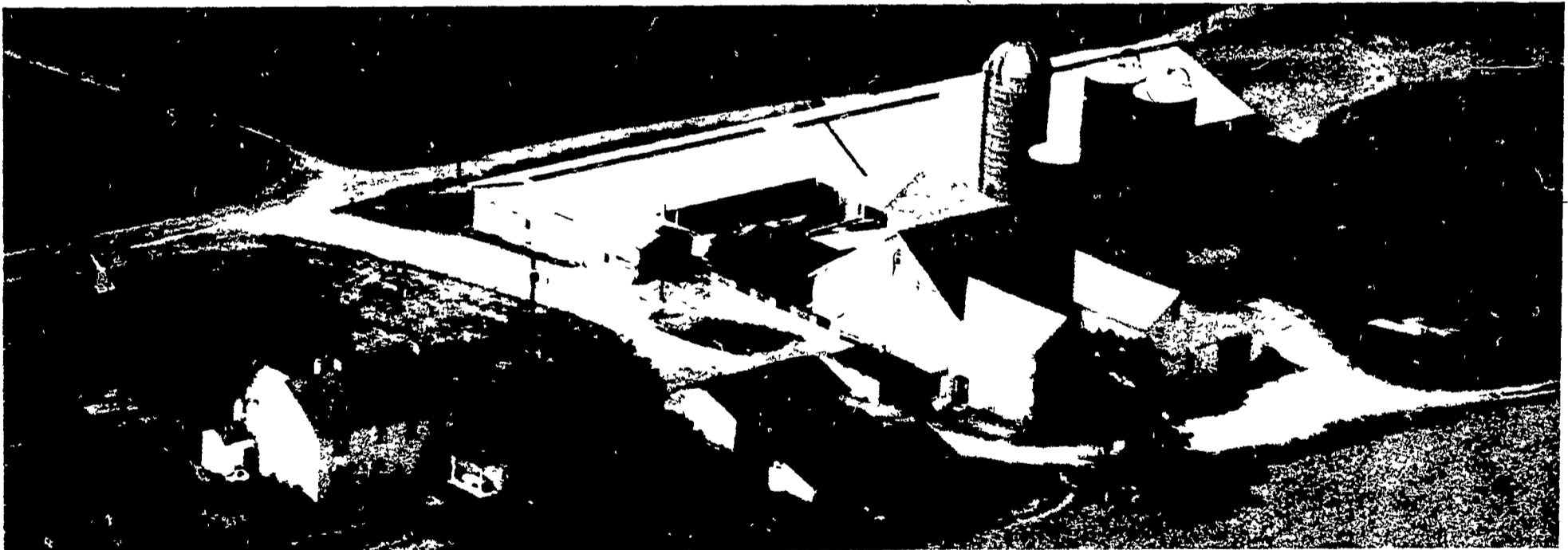
DANIEL S. STOLTZFUS

RD 3, BOX 89, MT. JOY, PA.

NEW DAIRY BARN

- ★ HARVESTORE Fully Automated Feeding System
- ★ SLURRYSTORE 70' Liquid Manure Storage
- ★ Nesseseth Automatic Ram Pump
- ★ Bou-Matic Unitized Stall Automated Milking Parlor
- ★ Dari-Kool Cooler & Therma•Stor
- ★ Automatic Crowd Gate
- ★ Thermostatic Controlled Windows
- ★ Timer Control Alley Cleaners

REFRESHMENTS SERVED



LOOK FOR:

- DIRECTION - SIGNS
- PARKING DIRECTION
- BANNERS

- ★ Route 283 to Salunga-Landisville Exit. Take Spooky-Nook Road South 2 miles to Pinkerton Road. Right on Pinkerton Road to farm. (Pond on Left.)
- ★ Centerville Exit on Route #30 ... North to Traffic Light. Turn left on Rt. #23 ... Three miles to Kinderhook Road. Turn Right on Kinderhook Road. Three miles to "T". Farm straight ahead.

See Page 37 For More Special Events.