

Farm Calendar

(Continued from Page 10)

District 4-H beef show, Lancaster Stockyards. Judging at 9 a.m.; sale at 1 p.m.

Wednesday, Nov. 15
York County 4-H goat project meeting.
Flower Growers' Day at Penn State University, 9

a.m. to 3:30 p.m. at the Keller Conference Center.

Annual stockholders meeting and banquet of the Federal Land Bank Association of Lancaster and the Lancaster Production Credit Association, at Plain and

Fancy Farm Restaurant, 11:45 a.m.

Thursday, Nov. 16
Elizabethtown Area Young Farmers meeting, 7:30 p.m. at the high school.
Inter-State Milk Producers annual banquet, 6:15 p.m. at the Host Farm, Lancaster.

Friday, Nov. 17
Farmers Forum of York

County at Rutter's in Red Lion.

Saturday, Nov. 18
Annual dinner meeting of the Hunterdon County, N.J. Board of Agriculture, Quakertown Firehouse, 7 p.m.
Delmarva sheep management meeting, Denton, Md.

Lancaster Farming, Saturday, November 11, 1978—39

Letters to the Editor

Dear Editor:

I have been reading the latest issue of your newspaper, and have noted the success of the various FFA members in the farming enterprises. I too have such ambitions. There is a sales advertisement of a property which I am very much

interested in. I have tried various local lending institutions and have been told the property is out of my reach.

The point is that I tried all that I know. Is there anything else that can be done?

George R. Diller
Red Lion, Pa.

Cage broiler

research continuing

NEWARK, Del. - In the latter part of the 1960's, broiler producers started taking notice of a practice then catching hold among egg producers - cage management. They saw caged layers producing well in space-saving stacked cages, and wondered whether they too could benefit from the new system, explains Delaware Extension poultry specialist George Chaloupka. The question of cage broiler research was addressed by Maine Extension poultry specialist Harry C. Whelden at the National Broiler Housing Seminar held recently at the University of Delaware Substation.

A number of state Agricultural Experiment Stations soon took up cage broiler research - among them Delaware, Maryland, Georgia, Arkansas, Maine, and Ohio State. The early work was directed toward increasing broiler efficiency - both performance and space utilization. Researchers tried to develop systems in which birds could be transported in the cages in which they're grown, so as to eliminate individual bird handling.

The initial work on caged broilers uncovered several problems. Birds got blisters from the cages. They developed crooked breasts,

bruises, and sometimes broken wings.

Subsequent research has been directed toward eliminating these problems. For instance, Delaware Agricultural Experiment Station research attempted to determine which floor materials best protected the birds from bruises, broken wings, and other causes of downgrading.

Various current research projects are looking into the causes of downgrading - attempting to determine if some strains are more susceptible than others, for example.

Still other research combines floor material research with attempts to perfect more efficient systems for broiler cage production. A goal of this type of research is to eliminate bird catching and the problems associated with it.

In spite of the different approaches, Chaloupka says, all broiler cage research appears to be directed toward eliminating the difference in downgrading between cage and floor-grown broilers. In the long run, however, cage-broiler production may show its true economic worth when we shift some of our attention to developing new commercial uses for downgraded birds.

Chaloupka explains that though a bird may have to be trimmed of a broken wing, the remainder would be perfectly fine, and could be sold in parts with no sacrifice of quality to the consumer.

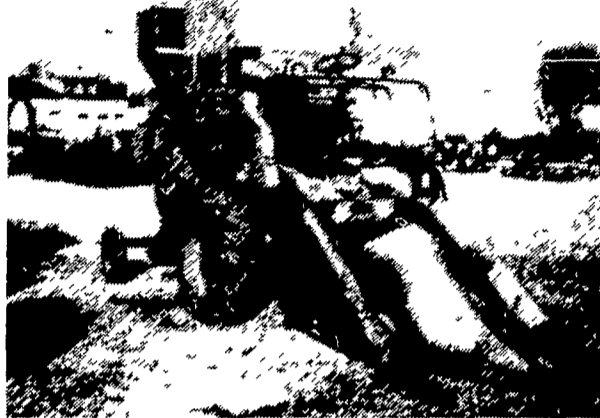
Learning to use cost-efficient caged broilers in this manner would contribute to our overall goal of economical broiler meat production.

POW WOW DAYS



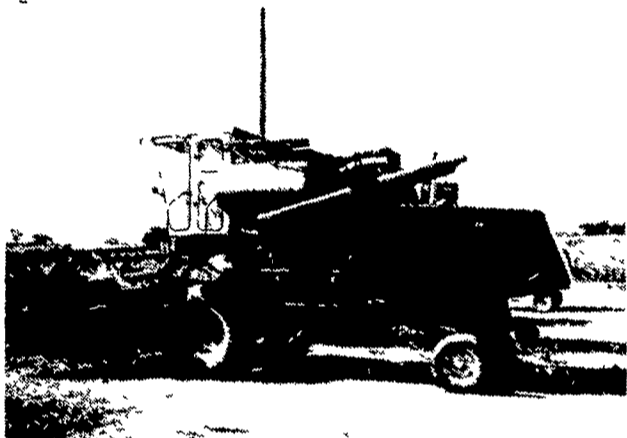
USED COMBINE

MF 410 Diesel w/Cab, 13' Platform, 3 row N.R. Corn Head **\$8,250.**



USED COMBINE

AC Model E w/10' Platform, Pickup Reel, 2 Row Corn Head, Real Clean **\$6,750.**



USED COMBINE

John Deere 55 Corn Soybean Special 12' Head **\$11,700.**



USED HARVESTER

New Holland 880 2-row narrow row head **\$3,650.**

USED HAYBINE SPECIALS

John Deere 1209 \$2,450.00
New Holland 479 2,750.00

USED BALER SPECIALS

New Holland 67 Baler \$1,150.00
John Deere 14T 750.00
John Deere 14T w/ejector 700.00
John Deere 24T 950.00
John Deere 24T w/thrower 1,750.00
New Holland 275 w/thrower 2,350.00
NH 269 w/thrower 1,750.00

USED HARVESTER SPECIALS

NH 717 single row head, 9 knife cutter bar 1,750.00
JD #12 w/single row head 350.00

USED TILLAGE SPECIALS

John Deere 4-16" Hyd Reset Three Point \$2,250.00
Ford 4-18" Semi-Mount Spring Reset 2,450.00
MF 720 Disk Harrow, 28 Blade, 26" Blades w/hyd cylinder 3,950.00

USED TRACTORS

MF 175 Diesel \$5,850.00

USED PLANTER SPECIALS

Tag 11650 John Deere 1250 - 6 Row Plateless \$2,350.00
11941 John Deere 494A - 4 Row 650.00
11934 John Deere 494A - 4 Row 1,275.00

USED COMBINE SPECIALS

AC - C w/4 Row Corn Head 14' Platform \$8,750.00
Cockshutt 427 w/Power Steering & 10' Platform 1,450.00

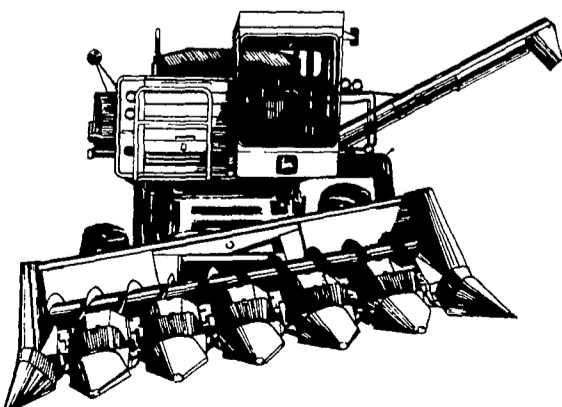
USED GRAIN DRILLS

John Deere 17 x 7 \$750.00
Co-op 15x7 Fert Grain Drill w/grass seed attach 750.00
MF 21x7 Plain 1,650.00

MISCELLANEOUS

New Set 18 4x30 Snap on Duals w/New Goodyear 6 Ply Tires \$1,050.00
3 pt Hitch for 630 tractor 400.00

Maximize your crop savings on slopes to 18 percent with a John Deere SideHill Combine



On-the-go, automatic separator leveling from feeder house through cleaning shoe is yours with a SideHill 6600 Combine. As the separator levels on slopes to 18 percent, the header pivots to parallel the ground. Keeping the separator level maximizes your crop savings because no material drifts to the downhill side as with a conventional combine. And to master hilly fields, you get a 128 hp. 404 cubic inch diesel engine. The cylinder is 44 inches wide.

Matched headers include 4- and 6-row corn heads and row-crop heads. Platforms with rigid cutterbar in sizes from 13 to 22 feet ... with flexible cutterbar in sizes from 13 to 22 feet.

Evergreen Tractor Co. Inc.

30 EVERGREEN RD., LEBANON, PA 17042, PHONE (717) 272-4641



AUTOMATIC HEAD GATE FOR CATTLE



"Give Us A Try Before You Buy"

DANIEL Z. ZIMMERMAN

Animal Health Supplies & Livestock Equipment

Located between Leola & Talmage along Rt. 772
RD1, Leola, Pa. 17540
717-656-6982

Thanks to you it works...

FOR ALL OF US



United Way