

# Harvesting weather

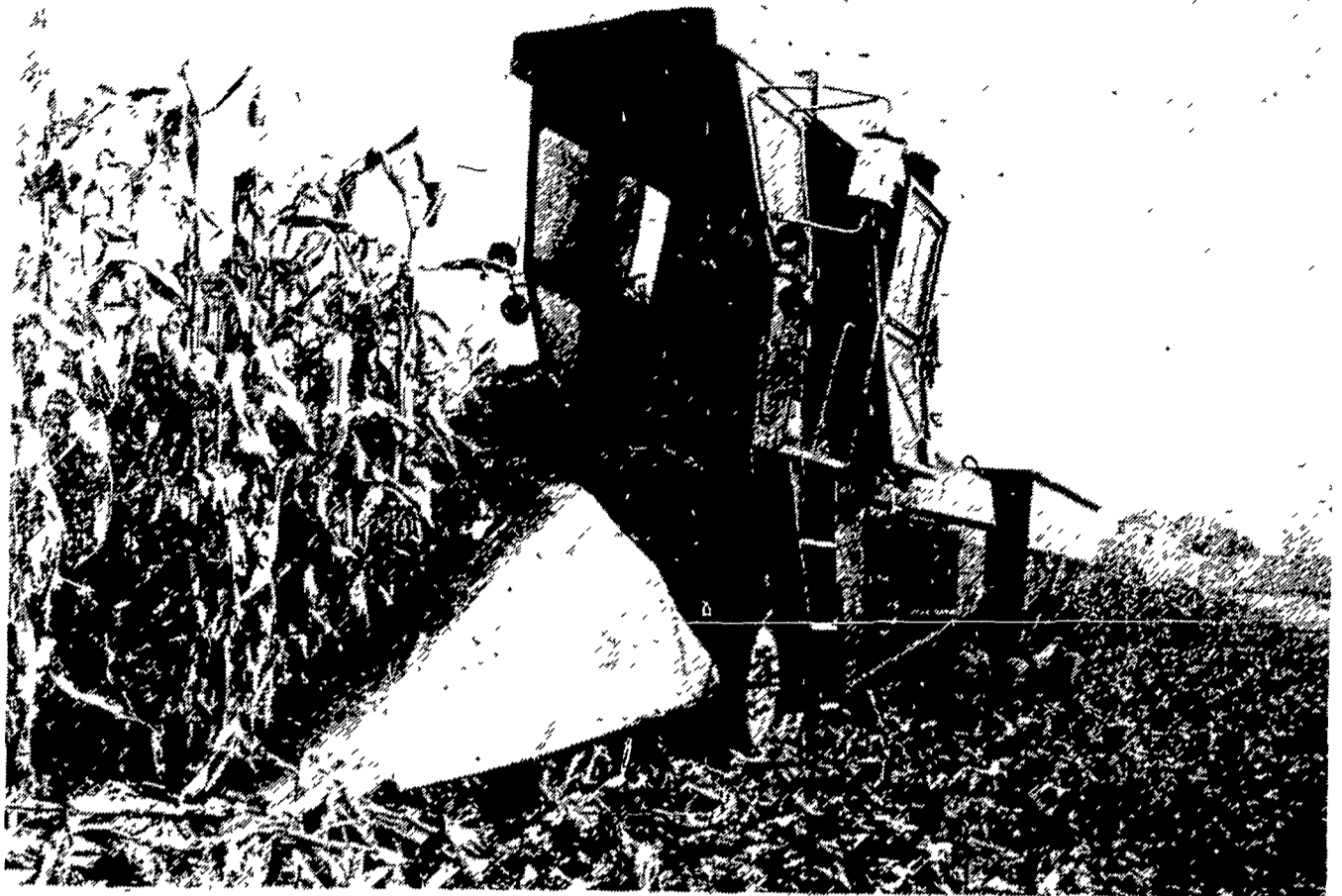
(Continued from Page 1)

than the harvest time last year, when some of the soybeans were lost entirely due to the weather conditions. Farmers had to battle with freezing rain, cold, and mud, and finally

snow before some finally gave up on harvesting all of their crops.

This year's soybean crop looks a lot better, with the crop harvested earlier in the much more reasonable weather.

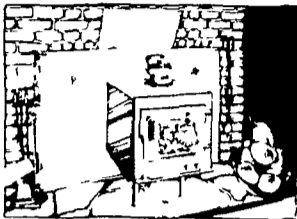
The drying of the corn has



Harvesting weather was exceptionally good this year, farmers report, telling that they lost no time due to inclement weather.

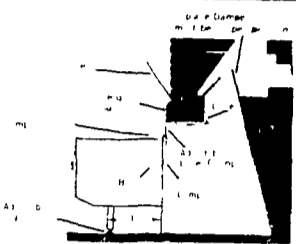
## SAVE up to 60%

In Home Heating Costs This Winter



CONVERT YOUR FIREPLACE INTO AN EFFICIENT HOME HEATER

This improved combination woodstove and fireplace cover panel installs in minutes without stove pipe or masonry alterations. Its proven design has been trouble free in thousands of installations. Owners report over 60% in fuel savings. Hearth Mate has an efficient intake air design. You can heat a six room home and burn throughout the night. Hearth Mate has been tested and approved by a recognized labora-



tory to meet the existing and proposed safety standards for solid fuel heaters. Hearth Mate is moderately priced, sturdy and pays for itself in months. Standard cover panel fits most fireplaces. Other sizes available.

**Hearth Mate™**  
the Fireplace Stove

Models In Stock - No Factory Freight Charge

**HOWARD D. WEISS**

R.D. 2, Myerstown 717-949-3755

been easier too due to the warm dry weather.

Actually, when the farmers thought about it, they noted that it has actually been about two months since there has been any real rain in the area.

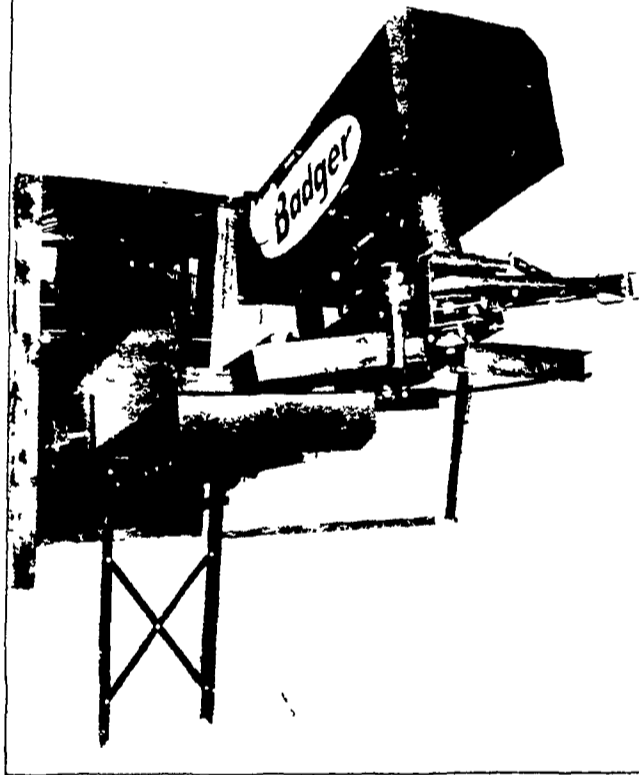
The only complaint about this lack of rain came from farmers who were worried about their small grains planted for the winter.

"I need some rain for my Fall grains," one wheat and barley farmer stated. "They

just aren't getting the start that they need."

Another man commented that his Fall grains were doing all right, but that he had gotten them planted exceptionally early, while there was still a lot of moisture that they could draw on. In fact, he said that they were doing fine, with good growth.

But he had also heard of other farmers whose Fall grain crops were not doing quite so well, and these had been planted later in the Fall. Then they would have been more affected by the dry weather.



## A barn cleaner's an "everyday" machine. Badger builds 'em to last

Cleaning barns is part of your everyday routine. Badger keeps it routine. When you're running tight, Badger keeps you on-schedule with a dependable, trouble-free barn cleaner.

Badger's chain is designed to operate smoothly with minimum wear. Every link is heat-treated forged steel, joined by heavy carbon-steel pins. The closed links reduce chain stretching...so there's no need to clean your barn twice a day, if you have a long installation. Badger chain is built to carry a full load.

See Your Local Badger Dealer



**PETERMAN FARM EQUIPMENT INC.**

225 York Road  
Carlisle, PA  
Ph (717) 249-5338

**LLOYD E. KREIDER**

RD 1  
Cochranville, PA  
Ph (215) 932-4700

**GRUMMELLI'S FARM SERVICE**

Mechanics Grove  
Quarryville, PA  
Ph. (717) 786-7318

**HEISEY FARM EQUIPMENT INC.**

RD 1  
Jonestown, PA  
Ph (717) 865-4526

**CECIL DAIRY SERVICE**

RD 1 Rt. 274  
1/2 Mi. South Rising Sun, MD  
Ph. (301) 658-6923

**ISAAC W. HURST**

East Earl, PA  
Ph. (215) 445-5767

**PIKEVILLE EQUIPMENT INC.**

RD 2  
Oley, PA  
Ph (215) 987-6277

**McMILLEN BROS.**

RD 1  
Loysville, PA  
Ph (717) 789-3961

**SHOW-EASE STALL CO.**

523 Willow Rd  
Lancaster, PA  
Ph (717) 299-2536

**ROY O. CHRISTMAN**

RD 1, Box 119  
Hamburg, PA  
Ph. (215) 562-7218  
488-1904



Beat The Cost Of Next Year's Christmas With A Blue Ball Bank '79 Christmas Club

Save

\$1 - \$2 - \$3 - \$4 - \$5 - \$10 - \$20 A Week

Plus A Big

5% Interest

**OBBNB**

BLUE BALL NATIONAL BANK

BLUE BALL  
354-4541

MORGANTOWN  
286-5181

TERRE HILL  
445-6741

MEMBER OF FDIC