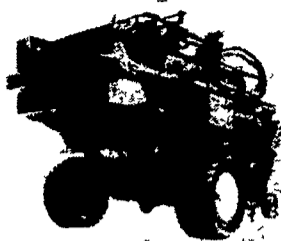


WHAT'S NEW



BIG SQUARE BALER

NORFOLK, Va. - A big baler that compacts hay or straw into rectangular bales containing up to 1350 pounds has been announced by Vicon Farm Machinery, Inc.

The new Vicon hydraulic baler produces high density, rectangular bales measuring 2 feet, 8 inches four feet six feet holding over 54 cubic feet.

The trailer type machine, for which patents have been granted and applied for, can be operated with a 100 h.p. tractor and delivers 40 to 50 bales per hour without stopping.

A hydraulically controlled ram compresses the bales into a rectangularly shaped chamber with a pressure of 35 tons maximum at 10 to 16 strokes per bale, depending upon density of the material.

Bale weights vary from approximately 550 pounds for straw to 850 pounds for hay to 1350 pounds for hay with 50 per cent dry matter.

Design and construction of this new baler is tuned to heavy, wet silage crops. It has been thoroughly tested under European conditions.

Vicon is a producer of farm machinery with 30 years international experience in fodder-harvesting equipment. The complete Vicon line includes fingerwheel rakes, swathturners, tedders, disc mowers and mower-conditioners.

In making the announcement, vice-president and sales manager Dennis Wright said that Vicon is proud to be one of the first to develop a machine that produces large square bales that farmers can easily haul and store. Farmers who traditionally have preferred a square bale have found that large round bales are difficult to haul and store.

"We're excited about the new Vicon big square baler," said President Dennis Schwitters. "It takes an outstanding unit to compact so much hay or straw into a single bale. The density, getting up to 1350 pounds of hay in a single bale, is remarkable."

For information or licensing details about this new baler, write Vicon Farm Machinery, 3741 Cook Boulevard, P.O. Box 6313, Chesapeake, Virginia 23323.

benzimidazole-sensitive and benzimidazole-resistant nematode strains and both intestinal and extra-intestinal forms.

The component identified as avermectin B1a was used in the animal tests. The scientists reported that test results prove the avermectins to be a valuable lead to a new anthelmintic for veterinary use. Further testing and development work must be completed before any of the agents or their analogs will be available commercially.

Parasitized animals used in the tests include sheep, cattle, dogs, and chickens. In separate tests, cattle received treatment either orally or by injection, with excellent efficacy demonstrated by both the oral and parenteral routes of administration stated Merck scientists.

The scientists said that their reported results, together with other data, indicate that the anthelmintic activity of the avermectins extends to at least eight families of nematodes: Filariidae, Oxyuridae, Trichinellidae, Trichuridae, Heterakidae, Metastrongylidae, Trichostrongylidae, and Strongylidae.

For more information contact Merck Sharp and Dohme Research Laboratories, P.O. Box 2000, Rahway, N.J. 07065 (201/574-6427).

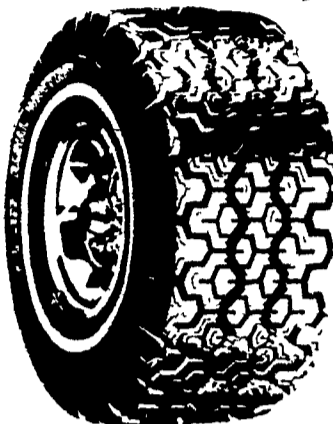
ANTHELMINTIC AGENTS DISCOVERED

Discovery of a new family of anthelmintic agents that appear to have unprecedented potency and spectrum of biological activity was announced by scientists from the Merck Sharp & Dohme Research Laboratories (MSDRL), a division of Merck Co., Inc.

According to Merck scientists, the results show that the avermectins have potent activity against a wide range of parasitic nematodes in domestic animals. They are effective against both manure and immature roundworms, both hypobiotic and normal fourth-stage larvae, both



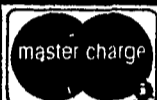
RADIAL SNOWTIRE BLITZ



FREE MOUNTING & BALANCING



HURST TIRE SERVICE



PHONE: (717)-354-4931
1 Mile West of Blue Ball On Rt. 322
HOURS: Mon. and Fri. - 7:30 to 9:00
Tues., Wed., Thurs. - 7:30 to 5:00; Closed Saturday

Our Christmas Club Offer to You



Open a Christmas Club with Farmers First and TWO of these full-color unbreakable Currier & Ives Christmas ornaments can be yours for only \$1.00 plus tax.

Bonus 5% interest paid when your deposits are automatically transferred from your Farmers First checking account.

Stop in now. Start your Christmas shopping early and have some extra cash next year.

SAVE THE CHRISTMAS CLUB WAY . . . FOR A MERRIER CHRISTMAS DAY!

Columbia Avenue*, Ephrata*, Ephrata North, Intercourse, Lancaster Shopping Center*, Lincoln, Litz*, Neffsville, Marietta, Park City, Park City Motorbank*. And coming soon . . . Brickerville Office*.

*Round the Clock Teller Locations.

The People Bank

FARMERS FIRST BANK

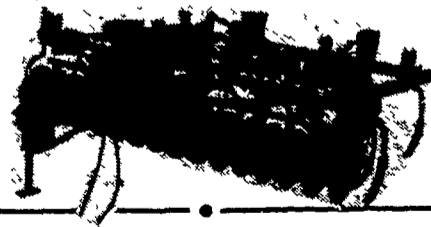
Member F D I.C.

"Open To Serve You Election Day"

THE ONLY WAY TO CHISEL PLOW IS THE

Taylor-Way

ONE OF THE FINEST AND BEST BUILT CHISEL PLOWS ON THE MARKET TODAY



SOIL-MASTER

9 FT. & 11 FT. IN STOCK

★ IT WILL PAY YOU TO SEE US. ★

HEISEY FARM EQUIPMENT INC.

RD1, Jonestown, PA 17038 Phone: 717-865-4526
Located 1/2 Mile south of Fredericksburg off Rt. 343
Business Hours: 7:30 A.M. - 5:30 P.M. Daily
Saturdays till Noon - Evenings by Appointment.