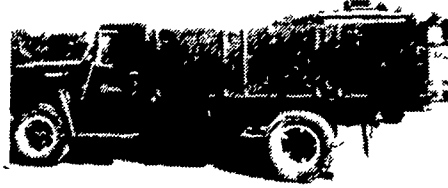


"ALL COMBINES STORED INSIDE"

(ALL WITH GRAINHEADS)
(DEALERS WELCOME)



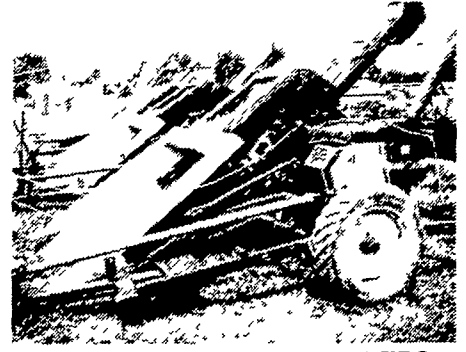
GLEANER K, cab,
10' grain, Hume reel. . . . \$8,900



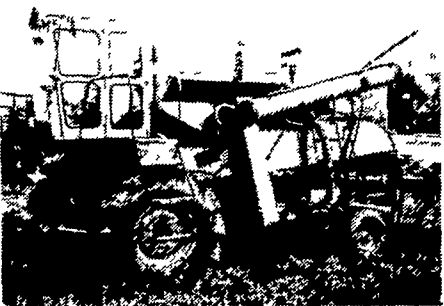
1962-1969-1973-1976
GRAIN DUMP TRUCKS
\$2,950-\$3,750-\$7,500-\$13,500



(2) LONG 5000 DIESEL COMBINE
(Size of 7700 JD) \$11,500 CHOICE



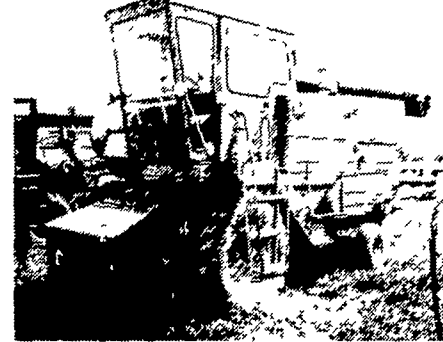
OCORNPICKERS & SHELLERS
30 TO CHOOSE FROM



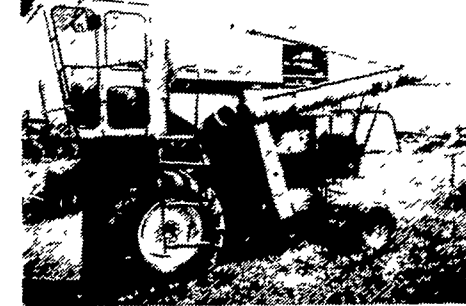
GLEANER CII, cab,
13 grain, Hume reel \$5,750



JD 4400, cab,
13' grain, Hume reel. . . . \$16,500



MF 510, cab, 13' grain . . . \$8,750



GLEANER E III, cab,
10' grain \$6,750



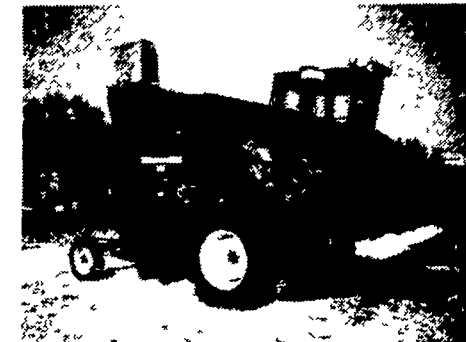
NI UNI COMBINES w/grain heads-
Choice of 3 - \$2,350 each.



GLEANER CII, cab,
13' grain, Hume reel. . . . \$6,250



INT. 203 w/cab, 13'
grain, Hume reel. \$4,000



INT. 205 w/cab, 13'
grain, Hume reel. \$6,750



INT. 203 w/cab, 13'
grain, Hume reel. \$4,500



INT. 203, 10' grain \$3,750



INT. 101, 10' grain,
Hume reel. \$2,250



MF 410, w/cab, 12'
grain, Hume reel. \$8,250

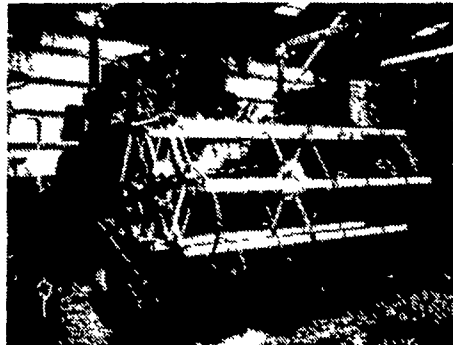
LAND FOR RENT

One tract in Myerstown consisting of 160 acres top quality limestone ground in cultivation Barn w/feeder system for beef cattle top capacity of about 200 head One silo presently filled

One tract 4 Mi East of Myerstown consisting of 90 acres currently used as pasture Barn stream through property totally fenced in

One tract 5 Mi Northeast of Myerstown consisting of 252 acres most in cultivation One house one barn w/feeder system for approximately 200 head cattle one barn set up for dairy but not used recently stream through property three silos presently filled one 10 000 bu grain bin w/dryer odd buildings

Lease Arrangements and Length of Lease are Flexible Contact Lloyd Wenger



JD 40, 10' grain,
Hume reel. \$3,750



JD 45 Squareback
w/cab, 12' grain \$4,750

COMBINES

MC 76	\$250
JD 30 pull type	\$1000
MF 82 - clean(SOLD)	\$2000
Int. 101 - 10' Hume Reel - nice	\$2250
[3] NI 710 Uni Combines	\$2350 each
Int. 203	\$3750
Int. 82 pull type	\$3750
JD 40 - 10' Hume Reel - nice	\$3750
Int. 203 w/cab	\$4000
Int. 203 w/cab - clean	\$4500
NI 701 Uni Tractor w/cab	\$4500
JD 45 Square back w/cab	\$4750
[2] Gleaner CII w/cab	\$5750-\$6250
Gleaner EIII w/cab	\$6750
Int. 205 w/cab	\$6750
MF 410 w/cab	\$8250
MF 510 w/cab - quick tach	\$8750
Gleaner K w/cab	\$8900
[2] Long 5000 Diesel w/cab, demo	\$11,500 each
JD 4400 w/cab	\$16,500
JD 55 Square back w/cab - nice	coming in
NI 702 Uni Tractor w/cabs	coming in

COMBINE CORN HEADS

(LARGEST SELECTION EAST OF MISSISSIPPI RIVER)

[6] Gleaner E240	[3] Int. 229
Gleaner A330	Int. 228
Gleaner F430	[2] Int. 329
Gleaner C430	Int. 733
[3] Gleaner C440	[3] Int. 327 WN
[2] Gleaner C630	[4] Int. 429 WN
Gleaner FL330	[2] Int. 22
Gle(SOLD)L440	[4] Extra IH Grain Heads
[3] Gleaner EIII 240	[4] MF 222
Gleaner A240	MF 44
Gleaner K Grain Head	[2] MF 33
[2] Gleaner KL238	[2] MF 20
Gleaner GL430(SOLD)	[2] MF 22
[2] JD 435 - 30" & 40"	MF 321
JD 434 - 40"	[2] MF 421
[7] JD 234	[2] MF 422
[5] JD 210	[2] Extra MF Grain Heads
[2] JD 10	NH 922 For 985
[2] JD 313	Case 404
JD 244	[2] Case 345 (2 row)
JD 443	[3] Oliver 522
JD 643	Oliver 512
[5] JD 205	[2] Oliver 531
[2] JD 343	Oliver 541
[4] JD 334	Oliver 544
JD 335	MM H210
Int. 430	4 x 40 For NH 985
[11] Int. 227	

HARVESTERS & HEADS (WE SPECIALIZE IN EXTRA HEADS)

NH 880 Harvester	Int. 2 x 40 Corn for 550
NH 818 self-propelled Harvester	[2] Case 300 PU Head
NH 818 PU	[2] JD 35-38 PU Head
JD 35 Harvester	[3] JD 34 PU Head
Fox Harvester	JD 35-38 1X Corn
[2] NH 880 PU Head	[2] JD 35-38 Sickle Head
[2] NH 2x30 Corn Head for 880	[2] JD 34 Sickle Head
NH 880 Sickle Head	[2] JDS 35-38 2x30 Corn Head
[2] NH 717 PU Head	[2] JD 34 2x30 Corn Head
[2] NH 616 PU Head	JD 35-38-3800 3x30 Corn Head
[3] NH 616 Sickle Head	JD 12 Sickle Head
NH 2x40 Corn Head for 818	JD 34 Harvester
NH 818 Sickle Head	[2] AC 780-782 PU Head
NH 717 Sickle Head	AC 720 PU Head
[4] Int. 50-55-550-650 PU Head	AC 780-782 Sickle Head
[2] Int. 2x30 Corn for 50-55-550-650	AC 2x30 Corn for 780-782
[2] Int. Sickle Head for 50-55-550-650	[5] Gehl 188 PU Head
[7] Int. PU Head for 15-16-350	Gehl 2x30 Corn for 188
[8] Int. Sickle Head for 15-16-350	Gehl 2x30 Corn for CB600
	Gehl 188 Sickle Head
	[5] Fox PU Head
	Fox 2x30 Cornhead
	Fox 4x20 Corn Head
	2 x 40 For NH 717

WENGER'S INC.

MYERSTOWN, PA.

PHONE

DAYS 717-866-2135
NIGHTS 717-866-7147
OR 717-273-9089