

BOAC award winners announced

KANSAS CITY, Mo. - Outstanding community action efforts by chapters of the Future Farmers of America (FFA) will be recognized when the Building Our American Communities (BOAC) Awards are presented at the 1978 National FFA Convention next week.

BOAC Awards will be presented to 150 of America's 8148 chapters during the Thursday morning session of the FFA's Golden Anniversary Celebration at the 1978 National Convention to be

held in Kansas City, Mo., November 7-10. The BOAC program is sponsored by Killy Endowment, Inc., Indianapolis, Ind. as a special project of the National FFA Foundation, and honors chapter efforts to make their communities better places to live and work.

Twenty-eight chapters with the most comprehensive community action programs will be presented National Gold Emblem Awards, the top award in the BOAC program. One hundred and

twenty-two other FFA chapters will receive National Silver and Bronze Awards for their efforts in community development. During the Convention one of the twenty-eight National Gold Emblem chapters will be selected to receive the National Citation for the best community improvement program in the nation.

The Pennsylvania FFA Chapters which will receive BOAC awards are the Manor Chapter, Millersville; Northern Lebanon, Fredericksburg; and

Fruit tree pesticide survey set

HARRISBURG - To assess the economic importance of pesticides now commonly used by fruit producers, a nationwide Fruit Tree Pesticide Use Survey is planned. In Pennsylvania a random

sample of 365 fruit growers will be contacted as part of the national survey. Interviews will be conducted by Crop Reporting Service enumerators under the direction of Mr. Wally Evans, Statistician in Charge of the Pennsylvania office. Individual producer responses will be kept strictly confidential.

Pesticide usage and registration is continually being monitored by local, state and federal authorities. Although strict regulatory controls have been placed on the use of many pesticides and with others up for review, detailed and reliable information on the actual quantity of pesticides used in the production of fruit crops is not available. The survey information will be most valuable in establishing benefits to fruit growers from the usage of specific pesticides needed to maintain adequate supplies of tree fruits.

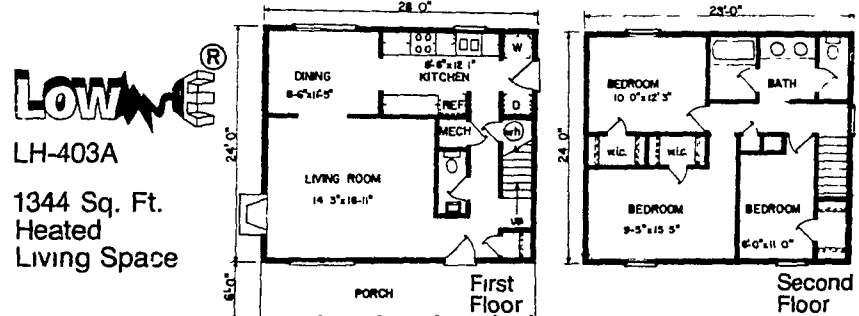
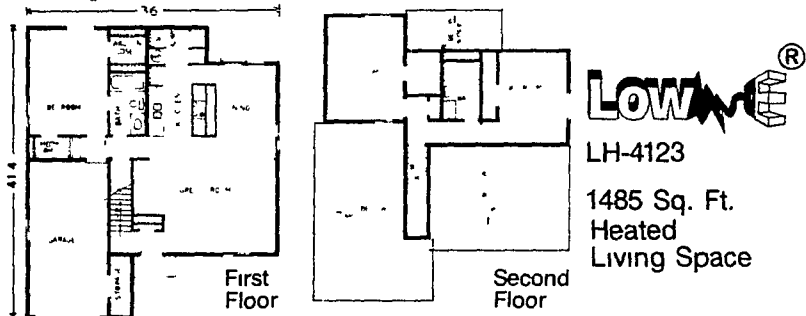
Clearfield, all of which will receive the bronze emblem. In New Jersey, the Camden Tech Chapter and Hunterdon Hills Chapters will be singled out for recognition. Both will be presented the bronze emblem at Kansas City.

sample of 365 fruit growers will be contacted as part of the national survey. Interviews will be conducted by Crop Reporting Service enumerators under the direction of Mr. Wally Evans, Statistician in Charge of the Pennsylvania office. Individual producer responses will be kept strictly confidential.

Pesticide usage and registration is continually being monitored by local, state and federal authorities. Although strict regulatory controls have been placed on the use of many pesticides and with others up for review, detailed and reliable information on the actual quantity of pesticides used in the production of fruit crops is not available. The survey information will be most valuable in establishing benefits to fruit growers from the usage of specific pesticides needed to maintain adequate supplies of tree fruits.

What's Your Pleasure?

Modern styling or traditional good looks? Either can be yours with a Low-E® Homestead® building material package from Lowe's!



The ultra-contemporary "Spirit of '76" features modern styling and real energy efficiency with heat pump.

The first floor has the popular "great room" kitchen and dining area a bedroom and full bath large walk-in closet The second floor offers two more good-sized bedrooms another full bath and more walk-in closet space Heat pump

\$17,980 Spirit of '76

The Low-E® Homesteads® are complete packages of all materials necessary to build these homes from the foundation up.

Not a pre-fab not a shell house Each energy-efficient Homestead® is a complete materials package to build the home of the future—today—on your lot from the foundation plate up Construction labor costs not included You furnish the land, labor, and foundation We provide everything else from the inside out And that includes not only the blueprints and building materials, but also paint, carpet, light fixtures, etc The materials furnished will meet or exceed the minimum property standards of FHA Any changes required to meet local or state building codes may alter the price accordingly The materials are delivered to the home site as work progresses, so there's a minimum of waiting or wasted materials

The Low-E® Homestead® has been specially designed from the ground up to be the most energy-efficient you can buy!

Our Low-E® homes can reduce energy use by up to 65% over conventional homes! How? Well, what we've done is combine all the existing energy-saving techniques with some innovative building methods You get extra insulation double-paned windows extensive caulking a super energy-saving heat pump light-colored heat reflecting roof and many other energy-saving components that can save you thousands of dollars over the years With the price of energy and owning a home steadily rising, you really owe it to yourself to look into the Low-E® Homestead®

The "Country Charm" offers just that with its traditional good looks and modern energy efficiency.

The first floor offers a spacious living room with brick fireplace dining room kitchen with laundry area and half bath The second floor has three bedrooms full sectional bathroom and two roomy walk-in closets Heat pump

\$17,965 Country Charm

The Low-E® Homestead® can cost no more to build than a minimum property standard home having similar features.

Does that sound too good to be true? Well, believe it! We've utilized some innovative building techniques to really trim labor costs And our homes require fewer board feet of lumber, which reduces construction costs even more Even better than that—studies have shown that a Low-E® home is as structurally sound as a conventionally built one

Mail To Lowe's of Lancaster
Box 206
East Petersburg, PA 17520
I would like more information on Lowe's Homesteads

Name _____
Address _____
City _____ State _____
Phone _____ Zip _____

landowner builder LF

Interested? We've got a beautiful brochure to tell you the complete Homestead® story. Just fill out this coupon and mail it to us.

LOWE'S #3

