

# Livestock market and auction news

## East Coast Carlot

October 18, 1978

Carcass beef trades moderate late yesterday. Choice 3 steers steady to firm. Prime special fed veal firm on limited test. Good and choice boning veal generally steady. Lamb 55 lbs. down generally steady.

### STEER BEEF

13 Loads

Negotiated sales: Prime 3 700-900 lbs. 86.00 late yesterday.

Choice 3 700-900 lbs. 86.00 late yesterday.

### HEIFER BEEF

1 Load

Negotiated Sales: Prime 3 500-700 lbs. 84.50.

### STEER BEEF

4 Loads

Formula sales last yesterday base Choice 3 600-900 lbs. 86.00-86.50, steady-firm.

Choice 4 600-900 lbs. 80.00.

### HEIFER BEEF

1 Load

Formula sales late yesterday base Choice 3 500-800 lbs. 83.25, steady.

### CHOICE 3

BEEF CUTS

8 Loads

Steer Hinds 145-190 lbs. 99.00.

Fores 130-210 lbs. 77.00.

Arm Chucks 90-130 lbs. 73.00-74.00.

Rounds, Steer 60-85 lbs. 101.00.

### LAMB CARCASS

CHOICE AND PRIME 3-4

2 Loads

55 lbs. down part loads 128.00, generally steady.

### FRESH PORK CUTS

8 Loads

Loins clear channel 14-17 lbs. 112.00-114.50.

CT Butts 1 1/2-6 lbs. 106.50.

Bellies, sds 10-12 lbs. 62.50.

### CURED AND PROCESSED MEATS

8 Loads

Skinned Hams 16-19 lbs. 102.00, weak.

Semi-boneless Hams 17-20 lbs. 122.00, steady.

Picnics 5-7 lbs. 75.50, firm.

No. 1 sliced bacon vacuum pack 114.00, steady.

Franks 70 beef, 30 pork 1 lb. pack 83.00, steady.

Bologna 70 beef, 30 pork 1 lb. pack 89.00, steady.

### BONELESS BEEF

9 Loads

90 per cent chemical lean, fresh 116.00 load, frozen 116.00.

85 per cent chemical lean, fresh 108.00, load.

80 per cent chemical lean, fresh 103.00, part load.

### BEEF TRIMMINGS

3 Loads

50 per cent chemical lean, fresh 48.00-50.50.

### VEAL CARCASS

HIDE ON

Prime (Special Fed): 180-240 lbs. few 145.00, mostly kosher; few 140.00, non kosher.

### BONING TYPE

Good & Choice

Northeastern Suppliers: 65-75 lbs. 112.00, all steady; 55-64 lbs. 110.00; 45-54 lbs. 108.00; 35-44 lbs. 106.00; 34 lbs. down 104.00.

Midwest and West Coast Suppliers: 70-80 lbs. 113.00-115.00, mostly 114.00, all generally steady; 60-70 lbs. 111.00-113.00, mostly 112.00; 50-60 lbs. 109.00-111.00, mostly 110.00; 40-50 lbs. 107.00-109.00, mostly 108.00; 30-40 lbs. 105.00-107.00, mostly 106.00.

Market courtesy of USDA.

and trimmings steady-50 lower. Trading fairly active; demand good. Sales reported on 109 load of carcass beef.

### STEER BEEF

15 Loads

Choice 2: 600-700 lbs. 85.25-85.50 selected.

Choice 3: 700-900 lbs. 82.50 late yesterday.

### HEIFER BEEF

94 Loads

Choice 3 500-700 lbs. 80.75 1.00 higher.

Prime 500-700 lbs. 81.00.

Good 2-3 500-700 lbs. 75.00.

### COW BEEF

No Sales Reported

### PRIMAL BEEF CUTS

Choice 3

16 Loads

FORES 130-210 lbs. 73.75 selected.

FORES 130-210 lbs. 72.50.

ARM CHUCKS 75-120 lbs. 69.00-70.50, mostly 69.50-70.50, 50-1.50 higher.

BONELESS PROCESSING BEEF

### BEEF TRIMMINGS

35 Loads

90 per cent chemical lean fresh 113.00, steady.

85 per cent chemical lean fresh 104.50, steady.

75 per cent chemical lean fresh 85.00.

75 per cent chemical lean frozen 85.50, 50 lower.

60 per cent chemical lean frozen 61.00.

50 per cent chemical lean fresh 45.50-47.50, mostly 47.00-47.50, steady.

50 per cent chemical lean frozen 49.00-50.00, unevenly steady.

Market courtesy of USDA.

## Special Market

October 16, 1978

Special Feeder Calf Sale Abingdon, Va.

There were 1646 head sold. All cattle were graded by Representatives of the VDACS Division of Markets, Livestock Section on VDACS standards and sold by the hundredweight.

STEERS: Choice & Fancy 300-400 lbs. 69.00-75.00; 400-500 lbs. 65.00-78.00; 500-600 lbs. 60.00-73.75; 600-725 lbs. 59.00-66.25; Good 300-400 lbs. 68.00-77.00; 400-500 lbs. 63.00-76.00; 500-600 lbs. 62.00-73.25; 600-725 lbs. 60.00-66.50, Medium 300-400 lbs. 63.00-75.00; 400-500 lbs. 56.00-73.00; 500-600 lbs. 58.00-68.00; 600-750 lbs. 55.00-59.00; Short 300-400 lbs. 43.00-60.00; 400-500 lbs. 50.00-65.00; 500-600 lbs. 55.00-66.50; 600-725 lbs. 52.00-61.00.

HEIFERS: Choice & Fancy 300-400 lbs. 45.00-62.75; 400-500 lbs. 60.50-63.50; 500-600 lbs. 50.00-62.75; 600-750 lbs. 50.00-54.00; Good 300-400 lbs. 47.00-62.00; 400-500 lbs. 55.00-63.25; 500-650 lbs. 52.00-61.00; Medium 300-400 lbs. 50.00-55.00; 400-500 lbs. 53.00-56.50; 500-600 lbs. 50.00-53.75; 600-750 lbs. 45.00-53.50; Short 300-400 lbs. 44.00-47.00; 400-550 lbs. 36.00-38.00.

### Auction Tale

At a recent auction, the auctioneer said "Sold to the lady with her husband's hand over her mouth."

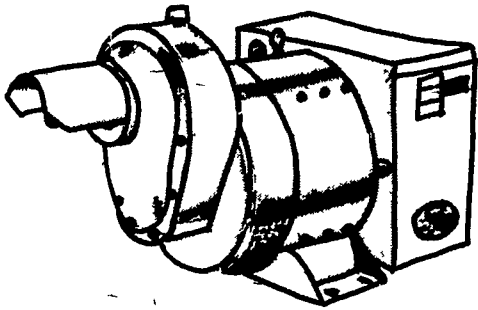
## Des Moines Carlot

October 18, 1978

Compared to Monday's close: Choice Heifer beef 1.00 higher. Choice arm chucks 50-1.50 higher. Boneless processing beef

## TRACTOR DRIVEN ALTERNATORS!

Protect your farm against costly power failure. Buy or lease a Winpower Alternator.



WINPOWER CORPORATION  
Distributed by

PHONE OR WRITE

Please send me additional information

Name \_\_\_\_\_

Address \_\_\_\_\_

City \_\_\_\_\_ Zip \_\_\_\_\_

Phone \_\_\_\_\_

### MARVIN HORST

1950 S. 5th Ave.  
Lebanon, PA 17042  
717-272-0871

### AL MAURER

Box 78  
Cambra, PA 18611  
717-864-3135

### WAYNE OLVER

Damascus, PA 18415  
717-224-4169

### JAY RICHWINE

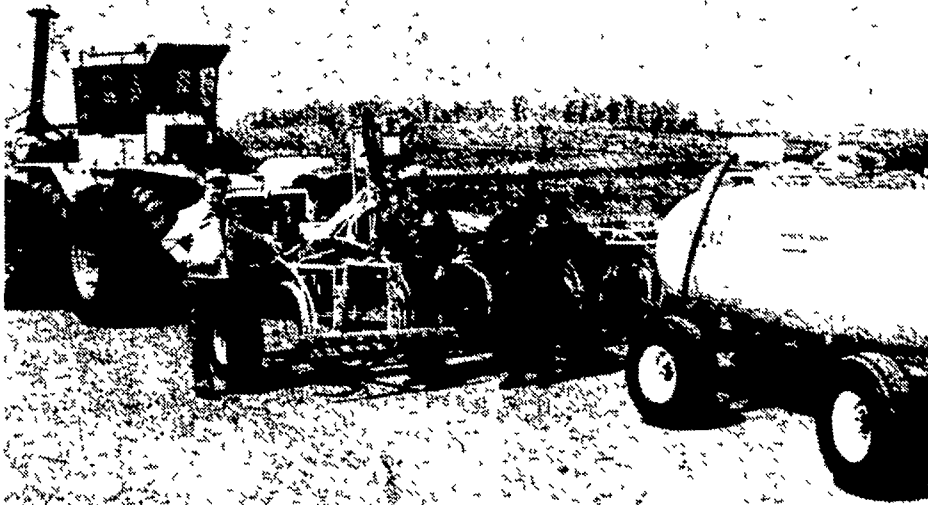
528 Hogestown Rd.  
Mechanicsburg, PA 17236  
717-766-4382

### BOB SWANSON

Kennett Square, PA 19348  
215-444-5610

## FALL TILLAGE AND CUSTOM APPLIED NITROGEN

Use the "Pros" - Fast, Efficient, Effective



Shown above left to right is Don Baldwin, Representative of Dow Chemical Co.; Kent Fritz and Mike Bitner - Salesmen for Organic Plant Food Co.

### ONE CUSTOM APPLICATION GIVES YOU ALL THIS:

- "COLD FLO" AMMONIA APPLIED FROM 100 TO 250 LB. NIT.
- N-SERVE APPLICATION WITH NITROGEN
  - Reduces Denitrification
  - Increases Nit. Efficiency
  - Increases Fall Application Time
- CUSTOM FALL CHISELING
  - Ideal for Corn and Other Crops

### COVERAGE AREA

North of Rt. 23  
West of Rt. 272  
and Adjoining Counties  
KENT FRITZ

South of Rt. 23  
East of Rt. 272  
and Chester County  
MIKE BITNER

### CONTACT:

OPEN MON THRU FRI 7:30 to 4:30 SAT TILL NOON



ORGANIC PLANT FOOD CO.

2313 Norman Rd., Lancaster, PA  
Ph (717) 397-5152

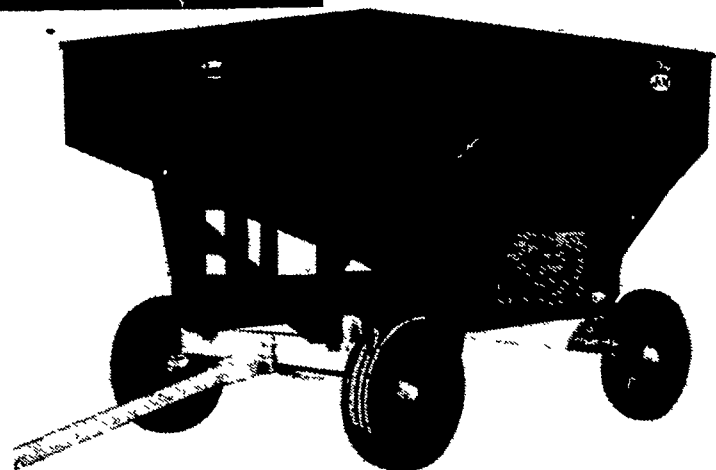
### CUSTOM OPERATOR JAY FOREMAN

330 SNAVELY MILL RD.  
LITITZ, PA 17543  
(717) 626-6168

## CLEARANCE SALE THRU OCTOBER



## SUPER KING SIZE GRAVITY BOXES



### MODEL 250-7, 7' WIDE

- Cap. approx. 250 bu. w/ 15" sides
- 15" sides available in solid type for shelling and in tapered type for picking
- One year guarantee
- 12 ga. reinforced corners
- Wider but still empties faster
- Graphite interior
- Quality construction
- 15% more welds
- Safety door
- Now available in green

Reg. \$430

While Supply Lasts

**\$380**

F.O.B. Our Lot

## FARMERSVILLE EQUIPMENT INC.

RD 4, EPHRATA, PA

717-354-4271

STORE HOURS

MON., TUES., WED., & FRI. - 7:30-5:30  
THURS. 7:30-9:00 - SAT. 7:30-3:00