



CENTRAL TRACTOR

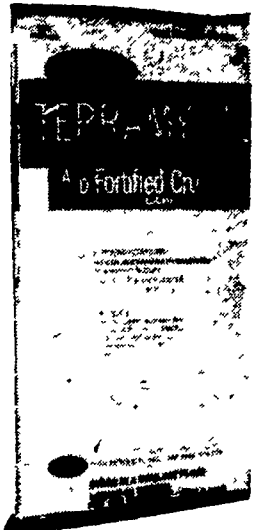


13⁹⁹

Reg 16 50 / SAVE 2 51
27800-285

Milk Replacer

Higher quality than many milk replacer on the market. Compare for yourself and see the difference the quality can make in your animals.

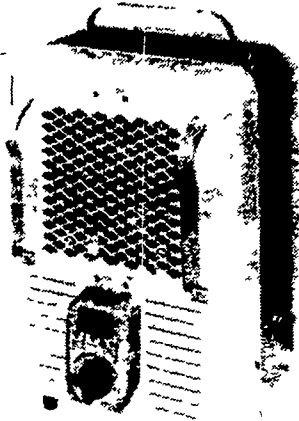


847

Reg 9 97 / SAVE 1 50
19015-141

Terramycin Crumbles

Increased disease protection fights in two ways, in the blood and in the gut.

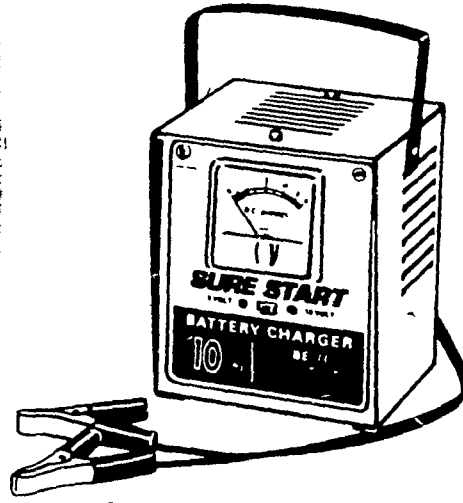


24⁷⁷

Reg 27 77 / SAVE 3 00
23986-260

Utility Heater

Dual range heat selection. Automatic therm-o-dial thermostat. Fan forced convection heat.



SAVE up to 5⁰⁰

Battery Chargers

Charges 6 and 12 volt batteries. Rugged steel case, accurate numerical dial ammeter shows exact rate of charge.

4 Amp
16277 084 Reg 22 49

SALE **17⁹⁹**

6 Amp
16282 084 Reg 25 99

SALE **20⁹⁹**

10 Amp
16276 084 Reg 31 99

SALE **26⁹⁹**

Booster Cables

8' cable is 10 ga copper, 12' cable is tangle-free 8 ga copper. Clamps are 150 amp copper plated steel.

8 Ft.
9581-055 Reg 3 49

SALE **2⁹⁹**

12 Ft.
9580-055 Reg 6 97

SALE **5⁹⁷**

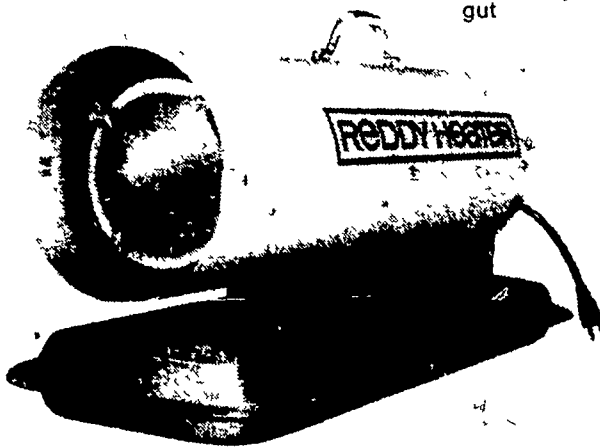
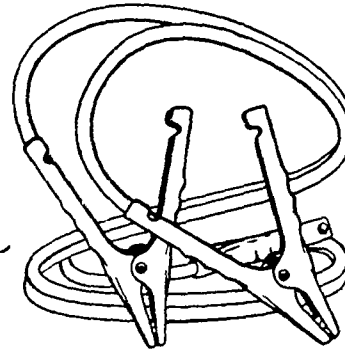
HEAVY DUTY CABLES
Tangle-free cables are 4 ga copper. Clamps are 400 amp vinyl coated steel.

12 Ft. HD
9610-055 Reg 12 88

SALE **10⁸⁸**

16 Ft. HD
9599-055 Reg 22 69

SALE **17⁹⁹**



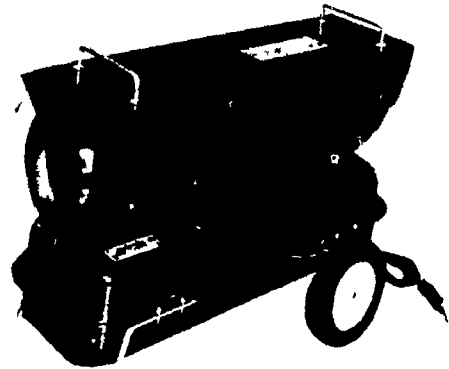
119⁹⁹

Reg 139 99 / SAVE 20 00
24000-260

30,000 BTU Space Heater

Completely portable, burns kerosene or #1 fuel oil, operates ten hours on a 2 25 gal tank of fuel, reliable solid state ignition and automatic flame out control.

SALE PRICES GOOD SAT., OCT. 21 THRU FRI., OCT. 27



229⁹⁹

Reg 249 99 / SAVE 20 00
23985-260

97,000 BTU Space Heater

Completely portable, burns kerosene or #1 fuel oil, consumes less than 3/4 gal per hour, 8 gallon tank, spark plug ignition and automatic flame out control.

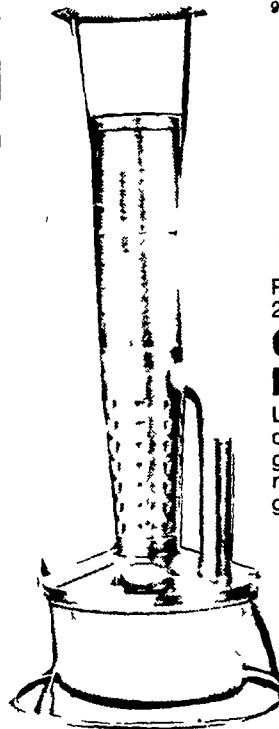


31⁹⁹

Reg 38 99 / SAVE 7 00
19976-149

Handy Hammersplitter

Splits logs any diameter up to 24" long. Made of sturdy twin channel, high carbon cutting wedge, and stable base.

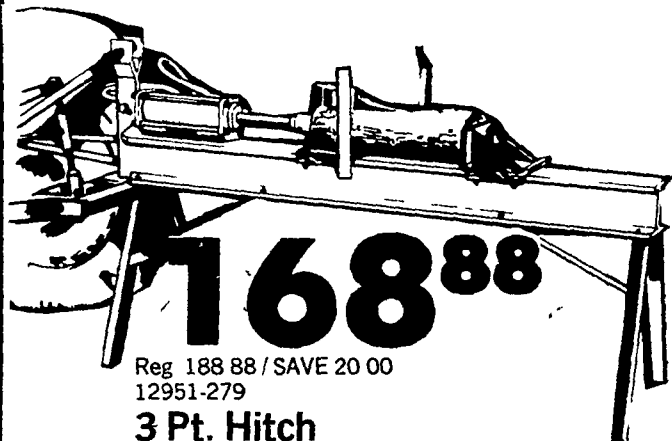


54⁹⁹

Reg 59 99 / SAVE 5 00
23990-260

Oil Burning Heater

Lights with a match. Equipped with damper device for quick, sure extinguishing, and handles for easy moving. Tank capacity of 10 gallons.



Reg 188 88 / SAVE 20 00
12951-279

3 Pt. Hitch Wood Splitter

Fits category 1 or 2, allows you to split a cord of wood in less than an hour. Exclusive quick adjust backstop, heavy duty construction, can be used free standing with ground stand or mounted on tractor. Uses 8" to 18" stroke hydraulic cylinder. Does not include cylinder, valve, hoses, or stand.

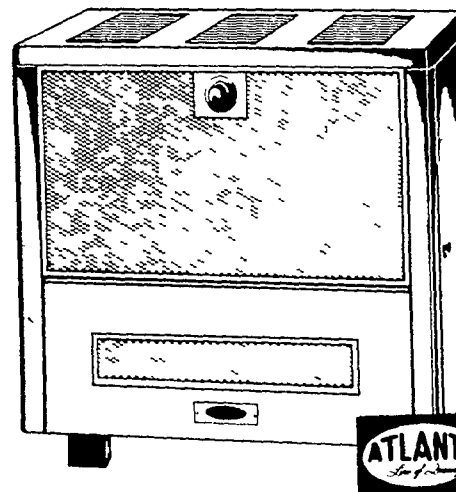
Stand for above 12953-279 **28.99**

46⁹⁹

Reg 56 99 / SAVE 10 00
19977-149

Heavy Duty Handy Hammersplitter

Splits logs any diameter up to 28" long. Made with rugged-beam construction, high carbon cutting wedge, and stable base.



239⁹⁹

Reg 279 99 / SAVE 40 00
12051-340

Wood Burning Homesteader

Bonderized, baked-on enamel cabinet finish that resists scratching and can be easily wiped clean. Cabinet top can be removed and the heater used for cooking if necessary. Handsome expanded metal grille with bronze-tone finish. Large slide-out ashpan for quick ash disposal. Cast iron firebricks, liners that hold heat for hours of warmth.

Blower for above SALE 59 99
12075-340 Reg 64 99

FARM & FAMILY CENTER

LANCASTER

1570 Manheim Pike, Hwy. 72 North
Ph: 717-569-0111

Sale Hours:

8 to 6:00 Monday - Thursday
8 to 6 Friday; 8 to 5 Saturday

CHAMBERSBURG

1351 Lincoln Way East
Ph: 717-264-8282

Sale Hours:

9 to 6 Monday - Thurs.
9-9 Friday
9-5 Saturday