

York County DHIA Monthly Report

SEPTEMBER 1978

The high herd in the York County DHIA program for the month of September was Sinking Springs Farm, Inc. of York R22 with 67 Holstein cows producing an average of 57 pounds of milk and 2.16 pounds of butterfat per day. The second highest herd belonged to Smyser's Richlawn Farms of East Berlin Road, York. Their 66 Holsteins averaged 53 pounds of milk and 2.0 pounds of butterfat per day.

The high cow was Sela, a 5-year old Holstein from Beshore Farms, New Cumberland R1, who produced 27,130 pounds of milk and 964 pounds of butterfat in 305 days. Second high was Iris, a 7-year old Holstein owned by Smyser's Richlawn Farms. Iris produced 22,813 pounds of milk and 934 pounds of butterfat in 305 days.

OWNER BREED	NO. COWS	% DAYS IN MILK	LBS. MILK	% FAT	LBS. FAT
Sinking Spring Farm, Inc. 3	67.0	91.5	56.7	3.8	2.16
Sinking Spring Farm, Inc. B3	70.6	90.4	53.5	3.8	2.04
Smyser's Richlawn Farms 3	66.6	94.8	52.4	3.8	2.00
Beshore Farms 3	40.7	90.8	54.3	3.6	1.98
David Stewart B3	52.2	93.6	49.3	3.9	1.94
Phillip D. Laughman 3	4.5	100.0	51.3	3.6	1.84
Avalong Farms, Inc. B3	31.9	88.6	53.8	3.4	1.83
Galawn Farms B3	68.6	87.4	47.4	3.8	1.79
Wayne B. Mummert B3	62.0	84.8	48.7	3.7	1.78
Rutter Bros. 2	74.1	93.6	37.4	4.7	1.77
Leroy Bupp B3	49.0	93.6	47.6	3.7	1.77
Carl Anderson B8	51.3	88.4	50.6	3.5	1.75
H.E. Fetrow & Sons B3	74.5	93.5	50.4	3.4	1.73

Dennis J. Myers 3	52.6	93.9	47.4	3.6	1.73
Claude M. Cooper G3	30.0	87.2	49.5	3.5	1.72
Thomas A. Boyer B3	36.9	92.0	47.5	3.6	1.70
Rutter Bros. 2	75.5	89.8	33.4	4.9	1.64
Guy A. Leader & Sons 2	73.0	92.5	33.3	4.9	1.62
Dennis L. Mc Williams B3	53.3	86.4	38.6	4.2	1.61
T. Edwin Johnson 3	54.3	94.4	49.6	3.2	1.60
Lynn Wolf B3	44.4	80.7	43.6	3.7	1.60
Rick L. Cook B3	78.1	82.3	41.5	3.8	1.59
Paul R. King 3	44.0	81.0	39.2	4.0	1.56
Geo. Knight B3	104.1	87.1	40.4	3.8	1.52
Wayne L. Sweitzer B8	41.1	89.4	41.5	3.6	1.51
B. Robert Charles B3	44.0	86.4	42.0	3.6	1.51
Melvin Diem Jr. B8	83.7	93.3	39.0	3.8	1.49
Stump Acres B3	112.9	93.8	41.9	3.5	1.48
Little Creek Fms. Inc. B8	153.7	92.9	41.3	3.6	1.47
Earl Fuhrman B3	65.5	80.5	39.2	3.7	1.46
Palmer McWilliams Jr. B3	39.1	86.7	40.1	3.6	1.46
Adrian Rinehart B3	95.5	84.5	37.8	3.8	1.45
Curtis V. Thompson B8	55.9	87.0	40.3	3.5	1.43
Vincent C. Webb B8	69.4	83.3	40.5	3.5	1.43
Dale & Darla Doll B3	61.9	84.2	41.2	3.5	1.43
Eugene M. Kilgore B8	47.3	87.7	35.6	4.0	1.42
Mc Ral Dairy Farm B3	114.4	87.8	38.9	3.6	1.41
Melvin R. Lehr B3	35.0	79.9	37.1	3.8	1.40
Elvin G. Molison B3	94.6	84.2	38.2	3.7	1.40
William Ruppert B8	55.2	79.7	40.2	3.5	1.40

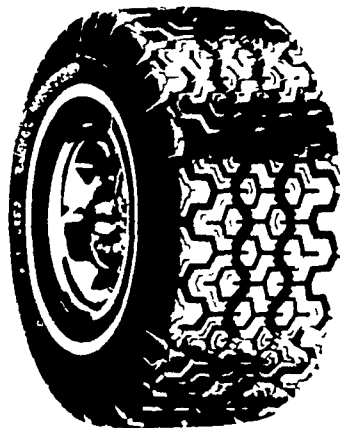
J. Donnell Taylor B3	83.2	87.5	42.9	3.2	1.39
Honeycrest B8	91.9	87.1	31.9	4.4	1.39
Hidden Springs Farm B3	72.9	78.7	36.3	3.8	1.38
Fred Kimmel B3	27.0	97.9	38.2	3.6	1.38
Bupplynn Farms Farm 2 B8	80.3	86.2	41.5	3.3	1.38
Roy & Frank Feeser B3	104.9	83.7	40.4	3.4	1.37
Stump Acres B3	115.0	87.4	38.2	3.6	1.37
C. Robert Kilgore B3	41.2	89.1	37.4	3.6	1.36
Desota & Robt. Burchett B8	106.4	92.5	36.7	3.7	1.36
Emory & Wm. Kilgore B8	57.6	90.1	37.6	3.6	1.35
Leonard W. Greek B3	21.1	85.4	35.8	3.8	1.35

OWNER NAME OR NUMBER	BREED	AGE	DAYS IN MILK	LBS. MILK	% FAT	LBS. FAT
George Knight 8282	3	6-3	305	17,672	3.8	671
Pan 162	3	5-2	285	14,432	4.5	646
I Pride	3	4-9	305	22,771	3.8	858
Olive	3	4-2	305	18,784	3.9	733
K 6	3	3-4	305	13,442	3.8	510
14	3	2-1	305	15,347	3.9	595
David Stewart Floy	3	4-8	305	16,876	3.5	597
Susquehanna Dairy Fm. Telst. 87	3	6-11	270	14,288	3.8	536
Hail 19	3	5-7	305	16,039	4.2	676
Open 93	3	5-7	305	22,056	3.3	728
Lace 88	3	5-4	305	18,687	3.9	727
Burke92	3	4-4	305	13,699	3.7	509
Ginge58	3	4-0	305	17,331	4.0	693
Keri 77	3	3-4	271	15,502	3.6	562
Fawn Valley Farm Lassie	3	5-0	305	15,362	4.0	617
Emory & Wm. Kilgore 16	3	6-10	305	11,163	4.9	551
39	3	5-6	305	14,158	4.4	629
47	3	5-0	305	13,741	3.8	518
Curtis V. Thompson 74	3	5-10	305	14,882	3.4	506
103	3	5-2	305	14,410	3.8	543
111	3	3-11	305	21,476	3.6	773

(Turn to Page 39)

Now! Before It's Too Late! Practice **FARM SAFETY**

RADIAL SNOW TIRE BLITZ



BR78 x 13	\$36.38
155 x 15	\$29.90
165 x 15	\$30.90
155 x 12	\$22.25
155 x 14	\$24.75
165 x 14	\$27.00
ER78 x 14	\$34.40
195 x 14 OR FR78 x 14	\$35.50
GR78 x 14	\$36.90
GR78 x 15	\$47.75
LR78 x 15	\$52.70

Federal Excise Tax Ranging From \$1.59 To \$3.20

•FREE — Mounting and Balancing



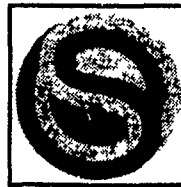
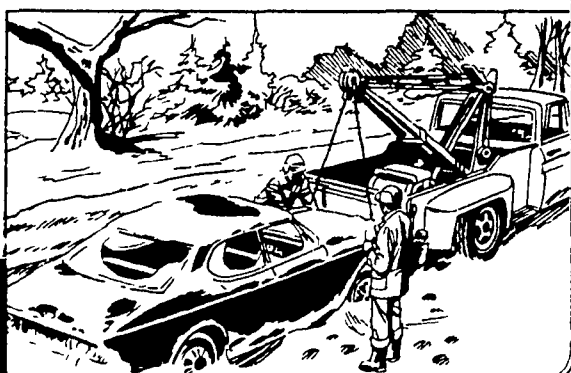
HOURS:

Mon and Friday 7:30-9:00
Tues., Wed., Thur. 7:30-5:00
Closed Saturdays

HURST TIRE SERVICE

Phone 354-4931

1 Mile West of Blue Ball On Rt. 322

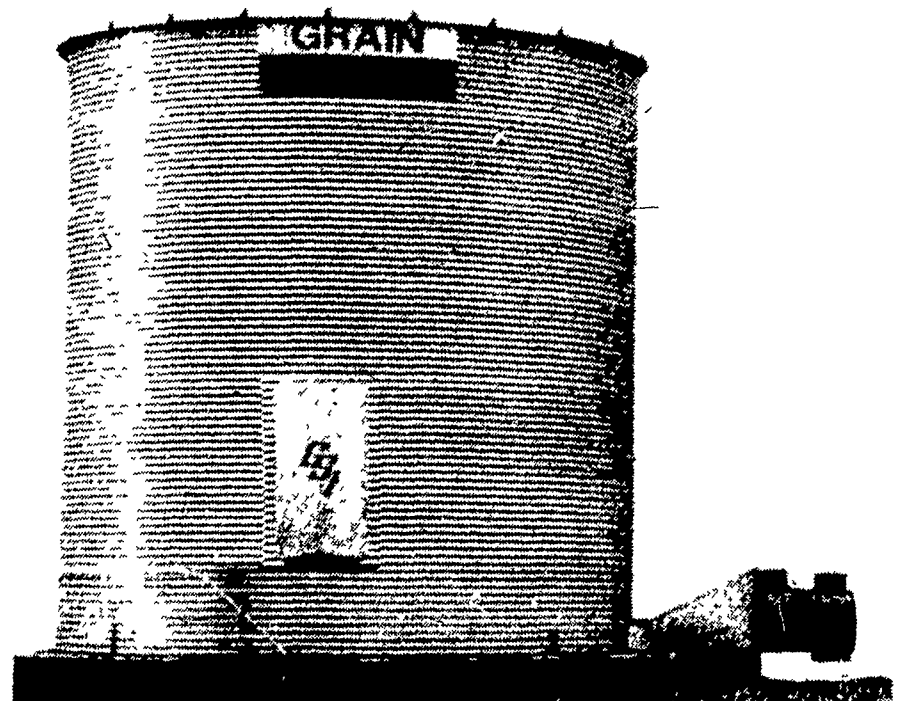


GAYLORD EQUIPMENT

88 RIDGE ROAD,
MONMOUTH JUNCTION, NEW JERSEY 08852
201-329-2666

Must Move:
21 ft. 7 ring 5700 bu. & 24 ft. 7 ring 7600 bu. bins.
Call Today For Prices.

We sell and install grain handling and storage equipment, serving all of NJ and Eastern PA.



A Grain Systems, Inc. bin is the basic component for on-farm storage under the most demanding conditions. GSI manufactures a complete line of on-farm storage bins and accessories for total grain control.

GSI heavy corrugated steel panels save time and labor in construction through efficient design and manufacturing at our own modern facility. With capacities ranging from 1,000 to 44,000 bushels and 15' to 48' diameters, GSI bins fill all your storage needs. GSI's high quality steel gives GSI bins 40,000 lbs. PSI tensile strength. Complete drying equipment is also available to meet your requirements.

Whether for temporary storage until harvest is completed or in combination with full drying equipment, GSI grain bins form the core of a total long term storage system.