

PUBLIC AUCTION

**1.2 ACRE
COUNTRY TYPE PROPERTY
MON. EVE., OCTOBER 23
7:00 P.M.**

LOCATION: Between Ephrata and Lancaster along Route 272 at Hartman's Grocery turn West on Rosehill Road 3/10th mile to property on left. West Earl Township, Lancaster County, Penna.

Real Estate consists of the following: lot with approx. 155 feet frontage and approx. 330 feet in depth containing 1.265 acres. Having thereon erected.

MODULAR TYPE DWELLING

containing: large eat-in kitchen with built-in cabinets, large living room with fireplace, 4 bedrooms, full bath. Basement. Oil hot air heat.

32 x 50 BLOCK GARAGE

with partial basement. Suitable for many different uses.

Well with pressure system, lots of mature shade, macadam drive. 1000 gallon cistern with pressure system.

Auction time 7:00 P.M.

Auction by

ELI B. & LORETTA J. GOOD

717-733-8406

Eaby and Eaby Attorneys

Auction Conducted by

John E. and Paul E. Martin Auctioneers

717-733-3511 — 717-733-3305 Ephrata, Pa.

Note: Make plans now to inspect this property. Open house Saturday, October 14 and Saturday, October 21, 1978 from 12:00 Noon to 4:00 P.M. or by appointment call 717-733-8406.

PUBLIC SALE

**OF VALUABLE REAL ESTATE,
FARM MACHINERY,
PERSONAL PROPERTY**

SATURDAY, NOVEMBER 11

At 9:30 A.M. Sharp

At R.D.#2, Red Lion, Pa. located 1/4 mile off Windsor-Freysville Road along Perry Road in Windsor Twp. The undersigned Administratrix of the Henry C. Smith Estate will offer at public sale the following:

REAL ESTATE

Farm consisting of approx. 101 acres of which there are approx. 80 acres of good farming land, balance in woodland. Improvements consist of a stone house with large kitchen, dining room, living room, on first floor, 4 bedrooms & 1/2 bath on second floor, attic, basement area with part cemented & part with ground floor used as cold cellar, shower in basement, heated by electric heat, storm doors & windows, water supplied by a never failing spring, nice yard area with trees & shrubbery, also frame summer house with basement area used as a butcher house equipped with double butcher furnace, large frame barn with hog pen attached, corn barn, chicken house & tobacco shed with cold cellar, also other out bldgs. Most of bldgs. had a new roof in recent years, electric & water in barn & tobacco shed, farm pond, some fruit trees, lots of good road frontage on both sides of Perry Road. House is in very good condition. Anyone looking for a large farm that could be used in various ways or for development use, be sure to inspect this farm & attend this public sale. Real estate will be offered at 2 P.M. on day of sale. Terms: 10 down, balance on or before Jan. 15, 1979. Will be open for inspection on Sat., Nov. 4, 10 A.M. to 3 P.M., on day of sale or by special appt. phone 244-8039 or call auctioneer.

FARM MACHINERY

Farmall Cub tractor with cultivators, Oliver tractor with plows, cultivators, manure loader & snow plow, 3 pt. hook, Oliver row crop tractor with corn picker, Gehl 500 bin wagon, rubber tire wagon, Oliver 16 hoe disc drill, disc harrow, Cunningham side delivery rake on rubber, manure spreader, hammer mill, belt, small air compressor, grindstone, ladders, tractor chains, metal wheelbarrow, bin of wheat, bin of oats, chicken feeders, potato plow, platform scales, clover seed sower, usual small tools & wagon items.

PERSONAL PROPERTY & ANTIQUES

Living room suite, dining room suite, Kenmore wringer washer, Victor chest type freezer, electric range, benches, tables, 1960 Chev. 10 pickup truck inspected & in running condition, antiques consisting of oak bedroom suite, heatrola, kitchen cabinet, dinkey stove, 2 iron butcher kettles, meat grinder, lard press, sausage stuffer, scalding trough, ladles, pans, hooks, tubs, etc. asst. dishes and many other articles to numerous to mention.

Not responsible for accidents on day of sale.

Refreshments by Red Lion Ambulance Association

Administratrix

MYRTLE H. SMITH

Jacob A. Gilbert, Auctioneer

Phone 252-3591

Samuel S. Laucks, Jr., Attorney

Ernest Hall

(Continued from Page 109)

earlier.) Florence continued "If you want to tell sheep people anything, tell them to keep records." You can not

Let us never forget that the cultivation of the earth is the most important labor of man.

go by your memory. Record keeping is essential" she added with great conviction. "Each fleece is tagged with the animals number" Ernest said. They also tag their lambs as they are born to prevent any confusion.

Ernest said their Finn-Rambouillet fleeces have been averaging six to seven pounds, Romney fleeces average 14 pounds, and their Lincoln produces about 21 pounds.

The Halls are using three plans in their breeding: Finn-Rambouillet rams on Finn-Rambouillet ewes, Dorset rams on black ewes (to establish a Dorset sired line), and the introduction of black rams on various white wool breeds "to see the results" they said.

Two years ago, during spring shearing, the Halls opened up the top half of their spacious barn inviting

spinners and anyone interested to their "Open Barn" weekend. Spinners now come in advance to reserve fleeces, so they can spin them as they are sheared that weekend. Many spinners reserve fleeces from the same animal each year. Over the two day period, the Halls had about 250 visitors at their shearing and spinning weekend.

Florence is presently a regional director for the newly formed Natural Colored Wool Growers Association. She said flocks will be inspected and registered for the next 3-5 years. Individual animals will be registered if they have at least five generations of pure black.

The standards of the association are designed to educate anyone interested in the attributes of colored and white wool, along with

the different uses. They plan to establish a wide gene pool from different breed lines to accommodate the needs of spinners and weavers, nation-wide.

The Halls tell me that Maryland State Fair has proposed a Natural Colored Wool show for 1979.

My next question shot off sparks from Florence. I asked if colored wool and spinning was just a fad. "Definitely not!" she said, "it is a rebirth of an old art. The younger people are very much into it. They are so sick of polyester, they are now buying more cotton and wool."

Ernest added "Things we think are going to be fads continue and continue. I think the same analogy can be applied to arts and crafts"

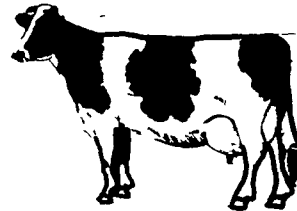
Another writer has coined the phrase, but I can not think of a better description as I leave Red Rock Farm, Ernest and Florence Hall-shepherds extraordinaire.

HOLSTEIN DISPERSAL

**Elwood O'Brien and Son
THURSDAY, OCTOBER 26, 1978**

At 11:00 A.M. Sharp!

4 Miles west of Somerset along Chickentown Road. Follow signs from Bender Implement Co. Farm is located halfway between New Centerville and Somerset.



130 Head of high grade quality Holstein cows and first calf heifers. TB Bangs tested. Pregnancy checked. 35 head have freshened in the past 8 weeks. 40 head due to freshen between sale time and January 1. Balance on all stages of lactations. Atlantic and ABS Sires represented. Big strong group of cows in good production. Several cows milking 90 pounds per day. 60 Cow Mats 4' x 8'.

Don't miss this important dispersal!

Owners:

ELWOOD O'BRIEN & SONS

Somerset, Pa. RD #1

Merle Mishler, Auctioneer

Terms: Cash.

Lunch Available.

**GAR-THEL COMPLETE
HERD DISPERSAL
TUES. OCT. 24**

11:00 A.M.

Located: Rainsburg, Pa. (Bedford Co.), 11 mi. south of Bedford, Pa. on Rt. 326, 1 mi. north of Rainsburg, Pa.

**106 REG. & HI-GRADE HOLSTEIN 106
DAIRY CATTLE**

31 Reg., 29 grade mature cows. 40 just fresh or within 60 days; 20 due by sale time & late Fall. Cows are from popular ABS & Curtiss sires. Milking 50# avg. good udders & type. 13 Reg. 1st calf hfrs. from Burket Falls Chief Sampson bred 5-6 mo. to Pinelee Thorland Thor 0009166. 6 Reg. & grade ready to breed hfrs; 12 Reg. & grade yearlings, 15 hfr. calves. 1 herd sire, son of Round Oak Rag Apple Elev.

MACHINERY:

77 Oliver tr. completely overhauled; F-34 JD hyd. reset 4-16" plow w/side hill hitch; MM disc plow; NI 212 spreader; Starline 145 barrel spreader; 40 Starline free stall partitions (new).

MILKING EQUIPMENT:

Surge Deluxe milk pump receiver package (new 6 mo. 1600 hrs.); Dari-Kool Bou-matic washer; Bender line washer; Surge wash vat; 3 Surge elec. pulsators & activators; Surge 50 plus pump; Surge Tonganoxie timer; 100 cow calculator; 3 Bou-matic wash in place units.

NOTE: Here is a chance to buy cows with real good breeding & type. Never been pushed for production but are milking real good now. Inspection welcome anytime. Sale will start 11:00 sharp. Tested, ready for interstate, pregnancy checked. Catalogs at ringside.

Lunch served by Rainsburg Lutheran Church
Terms: Cash or good check.

Owners

GARY & THELMA REPLOGLE

Managed & sold by

Robert M. Shaylor Sales

Troy, Pa. 717-297-3278

**FEEDER PIG SALE
SATURDAY, NOV. 11**

1:30 P.M.

Located 1 mile south of Lebanon. Take Rt. 897 North from Schaefferstown, at Iona turn on Mine Road, turn left at Fox Road (at Newmaster Store).

200-225 Head - @ 30 lb. to 65 lb.

Teeth Clipped, tails docked, castrated young. Iron, Erysipelas, and Rhinitis shots, wormed and sprayed for mange. No outside pigs will be sold at this sale.

Conditions by:

ALVIN H. MARTIN

717-273-9029

Merle Eberly Auctioneer

215-267-6608

**REEDER-MEADE
COMPLETE DISPERSAL**

On the Willis Remsburg farm located on Route 85 just south of Buckeystown, 7 miles south of Frederick, Maryland.

TUESDAY, OCTOBER 31, 1978

10:30 A.M.

160 HOLSTEINS SELLING 160

90 Registered — 70 Grades

DHIR Lactation average: 17,982M and 640F

3 Excellents and 17 Very Goods Sell

Daughters of Whirlhill Kingpin, Round Oak Rag Apple Elevation, Paclamar Astronaut, Paclamar Bootmaker, Harborcrest Happy Crusader, Arlinda Jet Stream, Hillhaven Standout Job, Citation R Maple and other popular A.I. Sires.

Selling:

EX Kingpin dtr. with 21,840M and 902F due to Elevation.

EX Happy Crusader dtr. with 22,840M and 807F due in February.

EX Royal Prince dtr. with 859F due in November to Jerry.

VG 87 Kingpin dtr. with 26,000M and 803F.

VG 86 Kingpin dtr. with 19,270M and 705F as a 2-yr old.

VG 87 Elevation dtr. with 19,110M and 640F sells fresh.

VG 85 Elevation dtr. (proj. to 18,000M) and her Betty Chief dtr. Her dam the Ex Kingpin dtr.

VG 87 Bootmaker dtr. with 2-8 357 23,320 784 Inc due to Job.

GP 81 Bootmaker dtr. with 28,970M and 1098F, and grand dam over 20,000M.

Heifers of all ages selling, including dtrs. of Ex and VG dams sired by RORA Elevation, Comet, Milu Betty Ivanhoe Chief, Startrek, Jet Stream, Job and many other top sires.

Also Selling — A March '77 Kingpin son whose dam has 23,000M and 760F.

For Catalogs Contact:

REEDER-MEADE FARM

Mr. & Mrs. Austin Reeder

Adamstown, Maryland 2170C

Phone: 301-662-5391

REMSBURG SALES SERVICE

Jefferson, Maryland 21755

Phone: 301-473-8214

Sale Managers