

# Livestock market and auction news

## Special Market

October 3, 1978

### Special Feeder Calf Sale

Harrisonburg, Va.

There were 390 head sold. All cattle were graded by Representatives of the VDACS Division of Markets, Livestock Section on VDACS standards and sold by the hundredweight.

#### Steers

Choice & Fancy 300-400 lbs. 73.50-75.50; 405-500 lbs. 75.00-78.00; 505-600 lbs. 63.00-72.25; 605-700 lbs. 62.50-63.00.  
Good 300-400 lbs. 74.00-77.00; 405-500 lbs. 78.75-80.00; 505-600 lbs. 65.00-78.75.  
Medium 300-400 lbs. 68.00-72.00; 405-500 lbs. 70.50-72.50; 505-600 lbs. 59.50-60.00.

#### Heifers

Choice & Fancy 300-400 lbs. 55.00-65.50; 405-500 lbs. 60.50-65.00; 505-600 lbs. 58.00-63.00.  
Good 300-400 lbs. 55.50-65.00; 405-500 lbs. 60.50-65.00; 505-600 lbs. 55.75-57.00.  
Mediums 300-400 lbs. 56.50-58.50.

## Special Market

October 9, 1978  
Special Feeder Steer Sale  
Abingdon, Va.

There were 1,896 head sold. All steers were graded by Representatives of the VDACS's Division of Markets, Livestock Section on VDACS standards and sold by the hundredweight.

#### STEERS

Choice and Fancy 400-500 lbs. 67.50-69.00; 500-700 lbs. 60.00-67.75; 700-800 lbs. 57.75-61.00; 800-1000 lbs. 48.00-57.00; 1000 lbs. & over 50.75-52.75.  
Good 400-500 lbs. 64.50-68.75; 500-700 lbs. 60.75-66.25; 700-800 lbs. 56.75-61.50; 800-1000 lbs. 50.00-57.25; 1000 lbs. & over 49.00-52.00.  
Medium 400-500 lbs. 56.00-68.25; 500-700 lbs. 54.50-66.50; 700-800 lbs. 52.00-62.50; 800-1000 lbs. 47.00-55.50; 1000 lbs. & over 47.00-48.75.  
Common 400-500 lbs. 52.00-62.25; 500-700 lbs. 52.00-59.75; 700-800 lbs. 48.50-56.00; 800-1000 lbs. 47.25-49.50.

## Lancaster Feeder Cattle

Lancaster, Pa.  
Friday, October 6, 1978  
FEEDER CATTLE

Today 1057  
Last Friday 1443  
Last Year 1300

TREND: Compared to last Friday feeder steers 1.00-2.00 lower, with most decline on weights over 850 lb. Supply included about 500 head sold in lots of six or more with the balance mainly clean-up trade of three or less per lot.

FEEDER STEERS: Couple lots mixed Good and Choice 525 lb. 65.50-67.00, 750-900 lb. 55.25-61.00, couple lots 920-1050 lb. 53.00-54.25; one lot Good 605 lb. 60.75.

FEEDER BULLS: One lot Choice 595 lb. 53.50; Good and Choice 765-950 lb. 47.50-48.00.

Market courtesy of USDA.



## Special Market

October 6, 1978  
Special Yearling Steer Sale  
Galax, Va.

There were 785 head sold. All cattle were graded by Representatives of the VDACS's Division of Markets, Livestock Section on VDACS standards and sold by the hundredweight.

Choice 500-700 lbs. 61.50-65.00; 700-800 lbs. 59.00-61.25; 800-1000 lbs. 52.75-58.70; over 1000 lbs. 50.50-53.50.

Good 500-700 lbs. 58.00-65.00; 700-800 lbs. 57.25-56.60; 800-1000 lbs. 51.00-56.60.

Medium 500-700 lbs. 55.00-63.75; 700-800 lbs. 55.75-58.95; 800-1000 lbs. 49.75-55.95; over 1000 lbs. 49.25.

Plain 500-700 lbs. 52.00-57.80; 700-800 lbs. 53.50-54.50; 800-1000 lbs. 46.00-49.00; over 1000 lbs. 48.00.

## Special Market

October 4, 1978  
Special Calf Sale  
Jonesville, Va.

There were 380 head sold. All calves were graded by Representatives of the VDACS's Division of Markets, Livestock Section on VDACS standards and sold by the hundred weight.

#### STEERS:

Choice: 300-400 lbs. 74.50-76.50; 400-500 lbs. 68.50-71.25; 500-600 lbs. 62.50-66.50.  
Good: 300-400 lbs. 72.00-75.75; 400-500 lbs. 65.25-71.25; 500-600 lbs. 62.75-68.75.

Medium: 300-400 lbs. 65.00-72.00; 400-600 lbs. 62.00-70.00.

#### HEIFERS

Choice: 300-400 lbs. 58.00-60.70; 400-500 lbs. 55.00-58.50; 500-600 lbs. 52.00-54.75.  
Good: 300-400 lbs. 54.00-57.00; 400-600 lbs. 53.00-57.00.

Medium: 300-400 lbs. 52.00-55.00; 400-600 lbs. 50.00-52.50.

## Special Market

Special Feeder Steer Sale  
Tri-State, Va.

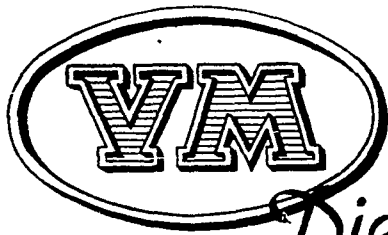
There were 1583 head sold. All steers were graded by Representatives of the VDACS's Division of Markets, Livestock Section on VDACS standards and sold by the hundredweight.

Choice & Fancy 500-700 lbs. 63.50-67.00; 700-800 lbs. 58.00-60.60; 800-1000 lbs. 52.25-56.90; 1000 & up 48.00-52.75.

Good 400-500 lbs. 66.50-67.75; 500-700 lbs. 57.00-67.00; 700-800 lbs. 53.50-61.00; 800-1000 lbs. 51.50-56.90; 1000 & up 49.10-49.50.

Medium 500-700 lbs. 54.00-66.75; 700-800 lbs. 56.50-58.50; 800-1000 lbs. 46.00-53.70; 1000 & up 48.50-50.50.

Common 400-500 lbs. 55.00-56.00; 500-700 lbs. 55.25-58.00; 700-800 lbs. 51.00-55.50; 800-1000 lbs. 45.00-49.25.



## "THE DIESEL WITH A DIFFERENCE"

Cuts your power costs because it's way ahead of its time on all points.

AVCO-VM diesel engines are world-proven money-savers. They deliver maximum power efficiency immediately, under any sudden load or climate variation. Their higher power to weight ratios mean NO REDUCTION IN HORSEPOWER to qualify for pollution standards.

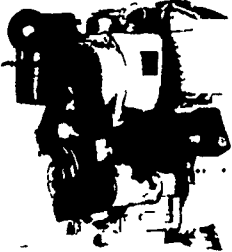
They're stingy on fuel, too. Many users report fuel consumption CUT IN HALF — and more — compared with gasoline engines. In some installations, our diesels are delivering more than

TWICE the hours of operation per gallon of fuel.

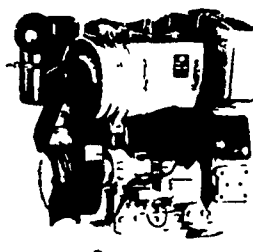
Faultless performance is the norm, rather than the exception. A choice of 27 premium quality air-cooled Avco-VM's (5 to 670-hp) means there's one that's right for your application.

Modular, unitized construction means fewer specialized parts, lower weight per hp, lower maintenance costs, 70% parts interchangeability — and they'll fit the tightest space.

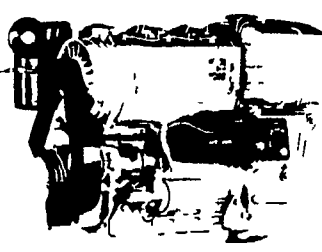
### 1050 SU SERIES



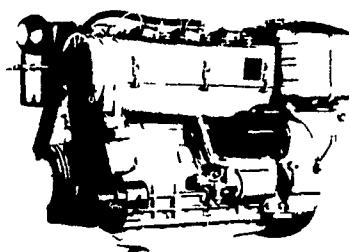
2800 R.P.M.  
22 SAE HP  
20 DIN HP



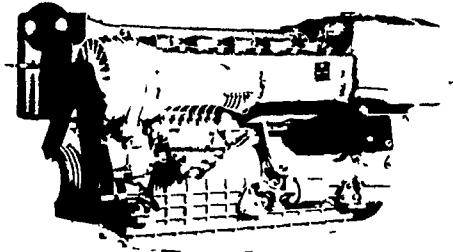
2800 R.P.M.  
44 SAE HP  
40 DIN HP



2800 R.P.M.  
66 SAE HP  
60 DIN HP

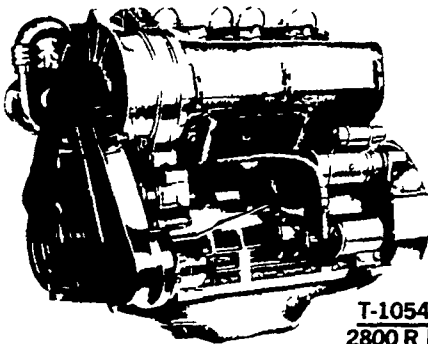


2800 R.P.M.  
88 SAE HP  
80 DIN HP

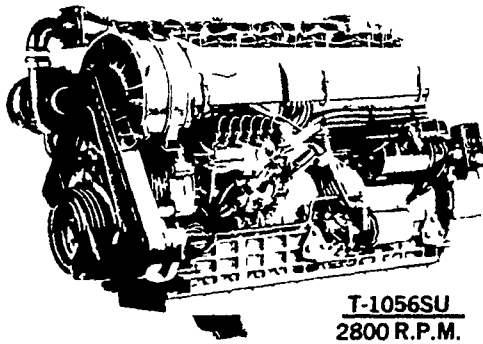


2800 R.P.M.  
132 SAE HP  
120 DIN HP

### T 1050 SU SERIES

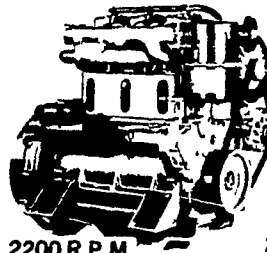


T-1054SU  
2800 R.P.M.  
106 SAE HP  
98 DIN HP

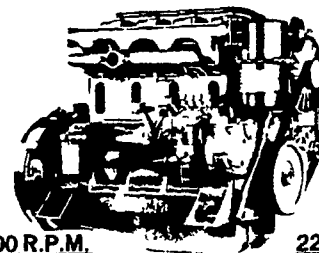


T-1056SU  
2800 R.P.M.  
160 SAE HP  
147 DIN HP

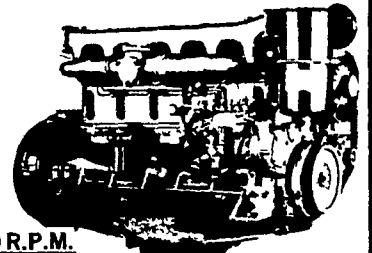
### DAN SERIES



2200 R.P.M.  
79 SAE HP  
72 DIN HP



2200 R.P.M.  
105 SAE HP  
96 DIN HP



2200 R.P.M.  
155 SAE HP  
144 DIN HP

#### USED DIESELS

- 1 - Cyl. Deutz
- (2) SR2 Lister
- (2) DVA 1500 Slanzis
- ST-2 Lister - Used 8 Months

THE "RIGHT FROM THE START" DIESEL ENGINE LINE FOR FAULTLESS PERFORMANCE.

## QUEEN ROAD REFRIGERATION

Box 67, Intercourse, PA 17534  
Phone: John D. Weaver - 717-768-9006 or 768-7111  
or Answering Service - 717-354-4374

24 HOUR SERVICE