

Livestock market and auction news

Middleburg Auction

Middleburg, Pa.
October 10, 1978

CATTLE 290. Compared with last Tuesday's market, slaughter steers Good & Choice \$1 to \$2 lower. Slaughter cows \$1.25 to \$3 lower. Few High Choice & Prime slaughter steers 54.50-56.00, Choice No. 2-4 975-1350 lbs. 53.00-54.85, Good 49.00-53.00, few Standard 46.60-49.60. Few Choice slaughter heifers 50.10-53.85, 50.10-53.85, few Good 47.75-49.00. Utility & Commercial slaughter cows 37.00-39.50, few to 41.50, Cutters 37.25-39.00, Canner & Low Cutter 34.75-37.00, Shells down to 31.50. Couple Good slaughter bullocks 50.35 and 52.50. Few Yield Grade #2 1050-1575 lbs. slaughter bulls 44.00-50.50. Choice 250-500 lbs. feeder steers 65.00-69.00, Good 50.00-60.00; Choice 350-600 lbs. feeder heifers 50.00-56.00; Good 400-700 lbs. feeder bulls 45.00-55.00.

CALVES 143. One Prime vealer at 88.00, Choice 75.00-85.00, few Good 65.00-69.00, Standard & Good 90-110 lbs. 65.00-68.00, Standard 70-85 lbs. 50.00-62.00, few Utility 60-90 lbs. 40.00-52.00. Farm calves, holstein bulls 90-125 lbs. 70.00-97.50; holstein heifers 85-150 lbs. 88.00-145.00.

HOGS 526 (Monday, October 9, 1978). Barrows & gilts \$1 to \$1.50 higher. US No. 1-2 200-230 lbs. barrows & gilts 54.00-55.35, No. 1-3 190-250 lbs. 53.00-54.10, No. 2-3 200-270 lbs. 51.00-52.85. US

No. 1-3 300-600 lbs. sows 42.75-46.00. (Hog 118, October 10, 1978.)

FEEDER PIGS 275. US No. 1-3 20-35 lbs. feeder pigs 32.00-45.00 per head, No. 1-3 40-60 lbs. 43.00-56.00 per head.

SHEEP 19 Choice 50-105 wooled slaughter lambs 58.50-61.00.

Market courtesy of PDA.

Belleville Auction

Belleville, Pa.
October 11, 1978

Cattle 149. Steers: Standard 49.00-49.75. Cows: Utility & Commercial 39.50-43.75; Cutter 37.00-40.00; Canner & Low Cutter 32.00-36.00. Bulls: Yield Grade No. 1 47.00-50.75.

Calves: 177. Choice 86.00-89.50; Standard & Good 110-130 lbs. 76.00-85.00; 90-110 lbs. 62.00-75.00; 65-90 lbs. 44.00-65.00; Holstein bulls 95-110 lbs. 85.00-92.00; Holstein heifer calves 92.00-106.00.

Hogs: 229. US No. 1-2 53.30-55.00; US No. 1-3 52.20-53.90.

Feeder Pigs: 359. US No. 1-3 20-35 lbs. 28.50-35.00 per head, No. 1-3 35-50 lbs. 36.00-52.50.

Sheep: 21. Choice 57.00-62.00; Ewes 20.00-22.50.

Pa. Auction Summary

October 13, 1978.

CATTLE 4643. Compared to 6943 last week and 5929 a year ago. Compared with last week's market, slaughter steers 75 cents to

\$1.25 higher. Slaughter heifers 25-75 cents higher. Slaughter cows 50 cents to 1.00 lower. Slaughter bulls uneven. Feeder cattle unevenly steady: High choice & prime YG 3-4, slaughter steers 56.75-58.75, choice YG 2-4 54.50-58.75, good 50.00-54.75, standard 46.00-50.50. Choice slaughter heifers 50.00-54.25, good 46.50-50.25, few standard 40.00-46.75, few utility 37.50-40.75. Utility & Commercial slaughter cows 39.00-43.50, cutters 37.50-41.50, canner & l. cutter 34.50-39.00, shells down to 30.00, a few choice slaughter bullocks 52.75-55.50, few good 48.00-52.85, few standard 44.00-48.75. Yield Grade #1, 1000-2300 lbs. 48.00-53.75, few yield grade #2, 1000-1600 lbs. 46.50-50.00.

FEEDER CATTLE: Choice 300-700 lbs. steers 62.00-69.00, Good 300-800 lbs. 50.00-64.00, Med. 300-750 lbs. 40.00-50.50. Good & choice 300-700 lbs. heifers 49.50-57.50. Good & choice 300-750 lbs. bulls 45.00-55.00.

CALVES 2849. Compared to 4015 last week and 3412 a year ago. Vealers steady to 5.00 higher. Few prime vealers 89.00-108.00, choice 75.00-95.00, good 68.00-80.00, standard & good 90-120 lbs. 65.00-78.00, 70-90 lbs. 58.00-75.00, utility 50-110 lbs. 42.00-62.00.

FARM CALVES: Active. Holstein bulls 90-120 lbs. 70.00-90.00, few 97.50. Holstein heifers 85-140 lbs. 75.00-125.00, few 147.00.

HOGS 4504. Compared to 6701 last week and 3201 a year ago. Barrows and gilts

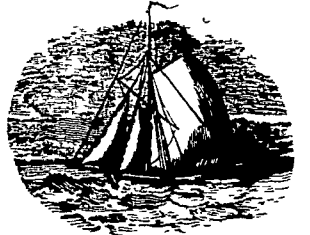
strong to \$1.50 higher. US No. 1-2 200-240 lbs. barrows & gilts 54.00-55.50, few to 56.00, No. 1-3 200-250 lbs. 52.50-54.00, No. 2-3 190-260 lbs. 50.00-52.50, No. 1-3 140-190 lbs. 45.50-51.00. SOWS steady to 75 cents higher, US No. 1-3 300-575 lbs. sows 42.00-46.75, few 48.50, No. 2-3 300-650 lbs. 36.00-42.00. BOARS 30.00-37.25, few to 42.00.

FEEDERPIGS 749. Compared to 1405 last week and 1224 a year ago, unevenly steady. US No. 1-3 20-35 lbs. feeder pigs 20.50-34.00 per head, No. 1-3 35-50 lbs. 35.00-44.00, few to 56.00. **GRADED FEEDER PIGS 3603.** All Sales cwt. Compared with 1465 head last week, and 2918 head a year ago. Feeder pigs mostly \$10.00-15.00 lower, spots

\$25.00 lower. US No. 1-2 25-40 lbs. 109.00-137.00, 40-50 lbs. 102.00-125.00, 50-70 lbs. 73.00-114.00; US No. 2-3 30-40 lbs. 84.00-114.00, 40-60 lbs. 65.00-100.00. Utility 30-75 lbs. 70.00-101.00.

SHEEP 281. Compared to 751 last week and 324 a year ago. Wooled slaughter lambs steady to 2.00 lower. Choice 60-110 lbs. 58.00-62.00, few to 67.00, Good 50-110 lbs. 48.00-58.00. Slaughter ewes 16.50-31.00.

Market courtesy of PDA.



To us, agriculture is still the backbone of America.

At National Central Bank one of our primary objectives is to serve, and help preserve, the family farm.

We still believe that agriculture is the backbone of America, and the family farm is the cornerstone of agriculture in our area.

That's why we have developed a complete range of financing, credit, trust and estate services - all designed to help you - the family farmer - fulfill your obligations.

With the value of farm production in our area increasing every year, the need for capital continues to rise along with it. We are here, and will continue to be here, to help you meet that need.

When we work together, through a relationship of mutual trust, we can all continue to move ahead. We can continue to keep agriculture strong.

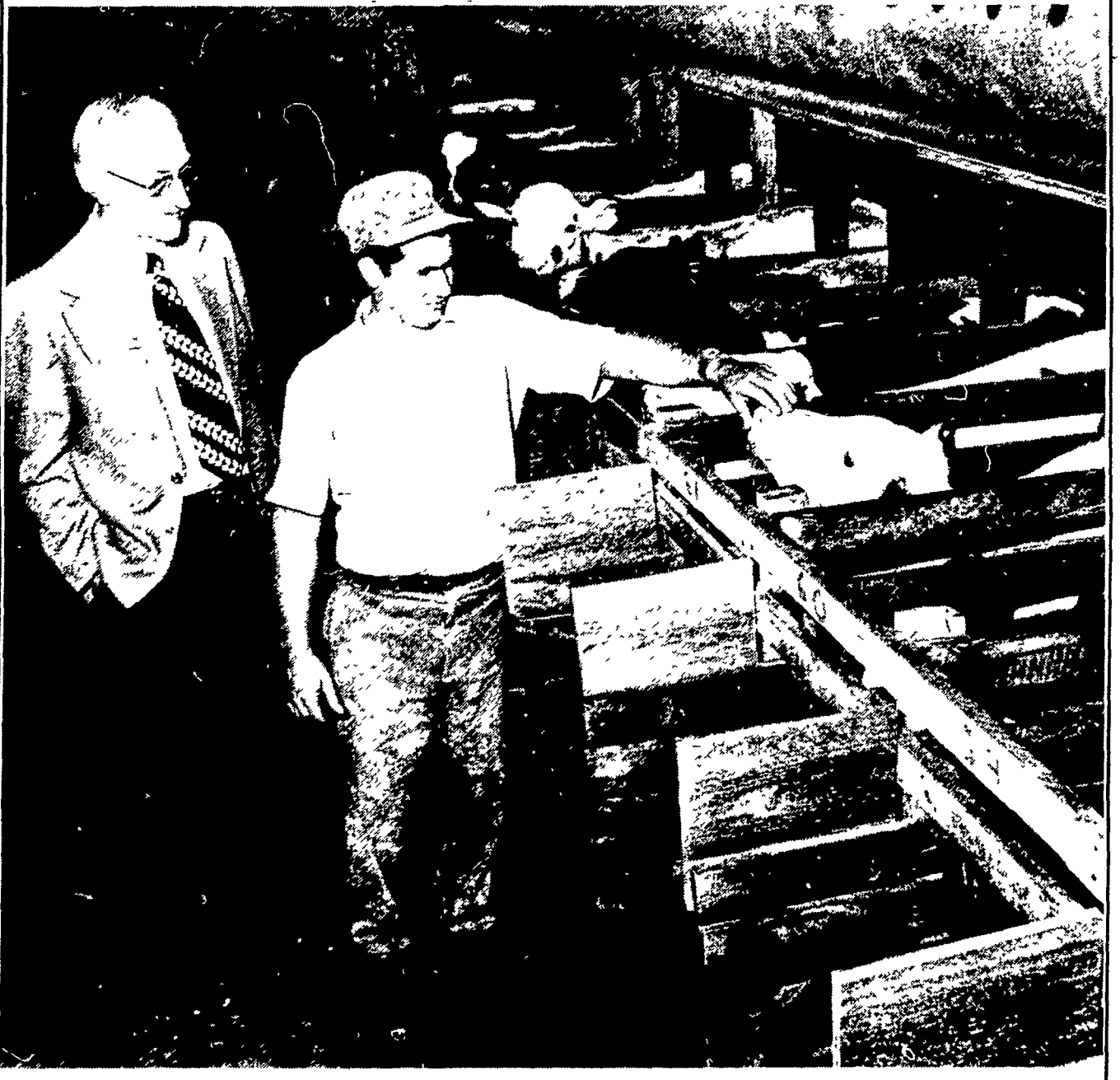
Contact your local office for complete details on National Central Agriculture Programs.

NATIONAL CENTRAL BANK



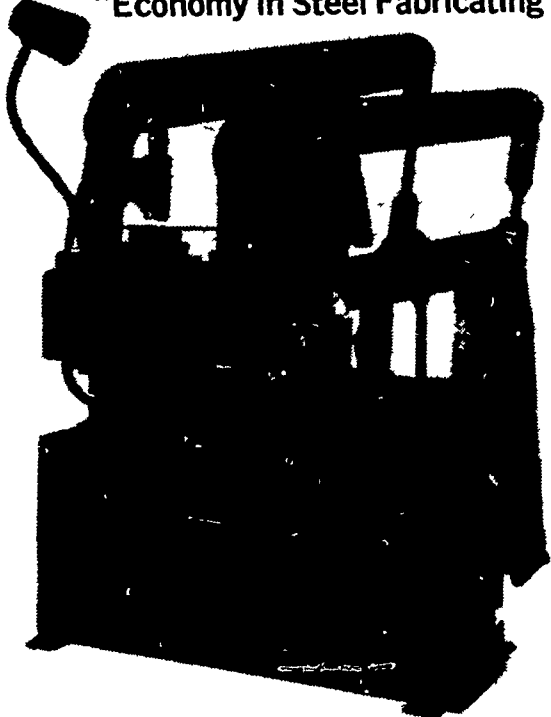
Member FDIC/Federal Reserve System

Meritt Marks, Vice President, Lebanon Region and Floyd Horst, R.D. #1 Newmanstown



DVORAK HYDRAULIC Power IRON-WORKER

"Economy in Steel Fabricating"



★ With Angle-Iron Shear and Power Punch

• PUMPS • HOSES • MOTORS • HYDRAULIC UNITS

DAVID S. KING

RD 2 Box 275B
Myerstown, PA 17067
Rt. 897 N. of Schaefferstown
1st Road Right

