

HELP WANTED

Amish roofer with slate experience wanted, will furnish transportation. Ph: 717-872-4135.

Experienced person for hogs, steer and tobacco farm, house available. 717-872-5554.

Help Wanted on beef, hog and crop farm. 717-299-4462.

We are looking for people for the following jobs: Experienced welders for our repair department; Painters & painters helpers for second shift. These are good paying jobs with outstanding benefits, paid vacation, holidays and hospitalization. Apply now! Morgan Trailer Mfg. Co., Joanna Road, Morgantown, PA 215-286-5025.

Wanted - someone to work on poultry farm parttime. Ph: 717-569-0022.

Help Wanted for servicing and installing of milking equipment. Will train. Plumbing and electrical experience will be helpful. Should be mechanically inclined. Good wages and benefits. Call 717-626-9541.

Farmhand to work on farm, must help milk, only experienced must apply, 3 bedroom trailer available, salary based on experience. 717-567-6782 Newport, PA.

Man or young couple to work on small progressive dairy farm. Must have experience milking and knowledge of machinery and repairs. 2 bedroom house available. Call or write Rod Wood, Woodson Farm, MR 2, Pennsylvania, Pa. 18073. 215-679-2065.

Reliable man for dairy and general farm work, new setup, automatic parlor. House or trailer provided, plus wages and benefits. Laverne Bentz, Wellsville, Pa. 717-432-4100.

HELP WANTED

Young couple for 250 head dairy, must be clean, neat & particular, must be handy with farm equipment. Main responsibility, the feeding of the dairy herd with self contained mixer truck. Some field work, also spare milking. Time off, very nice house. Be prepared to give references. 717-933-8622.

Homemakers: New home party plan: Betty Crocker Cookbooks, Disney, Sesame Street childrens books, crafts, games, kit items. Parttime work, fulltime pay. No cash investment, tremendous opportunity. For information call 717-872-7224 Lancaster Co.

Dairy Manager Wanted - Married person with small family to take management of 200 cow Holstein dairy, double eight parlor and all new tie stall housing. Weekly salary, housing and utilities furnished. Must be able to oversee other employees and accept responsibility. College desired but minimum of 12 yrs. education. Must be willing to relocate to Northern Pa. (Tioga Co.). Thornbottom Farms, Box 668 RD#1, Nelson, Pa. 16940. Phone 717-827-2847.

Man for farming, gardening & maintenance work on organically run beef farm near Frederick, MD. Couple preferred. Good housing. Call Collect - 301-972-8123 or 972-8630.

Man or husband-wife team to work on dairy farm with top herd of reg. Jerseys. Fieldwork, part-time milking. Must have mechanical ability, like cows. Alternate week-ends off, housing, paid vacation, other benefits. References. Robert Dreisbach, Long Meadows Farm, RD 3, Hamburg, Pa. 19526 (215) 562-3966.

Help Wanted - Person to work on modern 500 sow confinement operation. Mountain View Farm, R1, Myerstown 717-933-5334 or 933-5349.

HELP WANTED

The possible dream - \$40,000 per year, your own business. Mondays only 717-859-3348.

Full-time news person wanted for farm publication. Farm background helpful. Formal education or previous writing experience required. Write Box 366-J48, c/o Lancaster Farming, Lititz, Pa. 17543.

Salesman Wanted Farm machinery importer looking for experienced, aggressive and career minded person to sell it's short line products direct to established dealers in PA, NJ, WV, DE and northern VA. Person must have farm background and be willing to demonstrate farm machinery to customers, excellent fringe benefits including automobile. For more information - call collect. Dennis Wright. Vicon Farm Machinery, Inc. Chesapeake, VA 804-485-1600

Christian man needed on dairy farm. Experienced, references required. Good wages. Peach Bottom area. Ph: 717-548-2469.

SITUATIONS WANTED

Wanted - \$20,000 to \$25,000 of private money at 9 1/2% interest to be paid back in 10 annual payments. Have backer if required. Ph. 717-866-2243 after 4 p.m.

Family would like to lease a dairy setup for approximately 40 to 50 milk cows. We would prefer to lease facilities and purchase feed from owner. We would consider a partnership if we could handle dairy operation. Preferably in the south central Penna area. Write Box 366 J-57, c/o Lancaster Farming Newspaper, Lititz, Pa. 17543.

TRUCKS

For Sale - 1966 Chev., 60 series grain & Feed truck, 14 ft. aluminum skin body, Ripco blower, hoist, engine overhauled, 2 speed, 26,000 GVW, chassis, excellent \$4500 Perry Co. 717-589-3826.

Wanted: 74-76 Ford F-250, V8, 4 speed truck. Within 60 miles of Shippensburg, Pa. Phone 717-423-6208.

1974 F750 Ford Tandem, 28 ft. Roll-Back \$12,500.00.
1970 IHC Diesel Tandem Roll-Back \$10,500.00.
IHC 1700 22 Ft. Roll-Back \$5,975.00.
1973 IHC 1600 New Grain Dump \$7,500.00.
Many Others
Curry Supply Co.
Curryville, Pa. 16631
814-793-2829

For Sale - C900 Ford Truck 16' grain dump, PS, air, 5&2 rear axle, 1000x20 tires. Excellent condition. Harford Co., MD. Ph: 301-692-6897.

Used Trailers For Sale - 35' Fruehauf Van, 35' Fruehauf cattle, 22' Parker dump, 40' Trailco flat, 61 C700 Ford truck with 16' dump, 69 VW Beetle. Keens 717-626-5420.

Truck for Sale - 1973 Int. tractor, full screw, model 4070A, 318 Detroit, 38,000 lb. rears, 151 in. W.B., heads rebuilt, new springs, new batts - 4, new alt., priced to sell 609-893-8257 John Horner Burlington Co.

Good Selection of Used Kenworths, IHC, Ford, R Model Macks, Tractors, Tri axles; Tandem & Single axle dumps, 26 & 28 ft. Dump Trailers; 40 ft. Reefers \$5500. Flats, Lowboys; & 6000 gallon Tanker \$2000; Curry Supply, Curryville, Pa. 814-793-2829.

BUSINESS OPPORTUNITIES

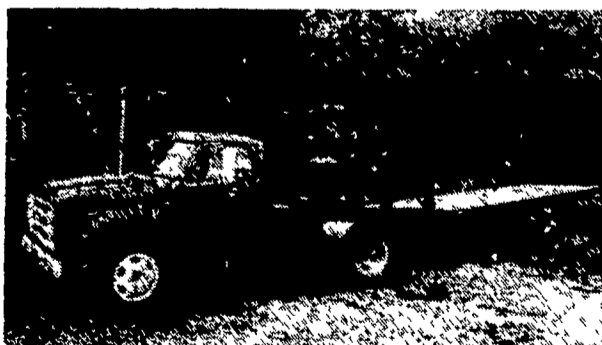
For Sale - Poulan and Wright Chain Saw parts, also some Wisconsin parts. Would like to sell out and have someone to take over dealership. Poulan Company has been number one chain saw seller in 1977 according to figures shown in the chain saw industry magazine. Poulan Chain Saw Company has been making saws approximately 30 years. A good brand and model to sell. Also some help available and information for on repairs if you want it. Also dealership perhaps possible for lawn mowers, rototillers and generators. C.B. Esh, RD 1, Box 106, Ronks, Pa. 17572. 717-768-8460.

AMS/OIL the quiet leader in Syn Lub. needs dealers, Part-time & full-time, no investment. 717-872-7324.

WORMS Very good potential - sell to bait shops and camping areas, will explain. 30 bed operation, will sell whole or part, over a million worms. Write Box 366 M-82 c/o Lancaster Farming, Lititz, PA 17543.

TRUCKS

HAUL 8 - 10 TON OF HAY



Available 1977 D600 318 engine, 5 speed transmission, saddle tanks, 40 ft. WW trailer, tri-axle with electric brakes.

Truck & Trailer \$9500 each.

JACK LOWRY
JERSEY SHORE, PA.
Phone: 717-398-1590

SEE US FOR SPECIAL CLEARANCE ON ALL CARS & TRUCKS IN STOCK

We have 318 V-8 pickups & club cabs in stock.

(Uncle) (Fat) (Slim)
See Milt, Pete, or Ross

PETTICOFFER DODGE, INC.

Route 230 East Next to Shopping Center
Elizabethtown, PA
PHONE 717-367-1808

**U Want 'Em...
V Have 'Em...
At Mike Rhodes
Truck Farm!**

We've Got Lots To Choose From...
(Toll Free Number - 800-362-7655)
Also Good in Area Codes 717 & 215

- | | |
|---|---|
| <p>4 WHEEL DRIVE</p> <ul style="list-style-type: none"> '78 Blazer, V8, 4 Speed, PS, PB, AM-FM Stereo Tape - \$8995. '78 Blazer, V8, Auto, PS, PB, Air Cond, Radio, Folding Rear, Seat, 7,000 Miles - \$9295. '78 Chevy 1/2 Ton Pickup, V8, 4 Speed, PS, PB, AM Radio, Locking Hubs - \$7695. '77 Scout Traveler, V8, Auto, PS, PB, Air Cond, Radio - \$6595. '77 Chevy Trailering Special Pickup, V8, Auto, PS, PB, Air Cond, AM-FM, Tilt Wheel, Scottsdale - \$7695. '77 Scout Terra Pickup, V8, Auto, PS, PB, Warn Hubs - \$6495. '77 Ford Step Side Shortbed, V8, Auto, PS, PB, AM-FM, Air Cond - \$7495. '76 Dodge 1/2 Ton Shortbed, V8, Auto, PS, PB, AM Radio - \$6295. '76 Ford 150 Pickup, V8, Auto, PS, PB, Air Cond, AM-FM, Ranger Model - \$6795. '76 Ford F150 Pickup, V8, 4 Speed, PS, PB, AM Radio - \$6495. '76 Ford 3/4 Ton Pickup, V8, Auto, PS, PB, Radio - \$6595. '76 GMC Jimmy, V8, Auto, PS, PB, AC - \$6495. '76 Ford 1/2 Ton Pickup, V8, 4 Speed, PS, PB, Locking Hubs, Radio - \$6195. '75 Chevy 1/2 Ton Pickup, V8, 4 Speed, PS, PB - \$5495. '75 Chevy Silverado Pickup, Loaded - \$5995. '74 Blazer Cheyenne, V8, Auto, PS, PB, Air Cond, Radio - \$5995. '74 GMC Suburban, V8, Auto, PS, PB, AC, AM Radio - \$6495. '74 Chevy 1/2 Ton Pickup, with Cab, V8, Auto, PS, PB, AM-FM - \$5195. '73 Blazer, V8, Auto, PS, PB, Radio, - \$5195. '72 Blazer, V8, Auto, PS, PB, Air Cond - \$4495. '72 Scout, V8, Auto, PS, PB, AM-FM Stereo Tape and CB, 36,000 Miles - \$4295. | <p>TRUCKS</p> <ul style="list-style-type: none"> '77 Ford F-150, V8, Auto, PS, PE, Radio, Dual Gas Tanks - \$4895. '77 Ford Shortbed Pickup, 300 cu inch, 6 cyl, st shift, 16,000 miles - \$3895. '77 Ford Ranger 150, Loaded - \$5795. '76 Dodge 1/2 Ton, 6 Cyl, Auto, PS - \$3695. '76 Ford 150 1/2 Ton, Big Six, 3 Speed, PB - \$3695. '76 Ford 1 Ton 8 Ft. Stake Body, V8, 4 Speed, PS, PB, Dual Wheels, GVW 10,000 Lbs., 51,000 Miles - \$4995. '76 Chevy Camper Special, 1 Ton Pickup, V8, Auto, PS, PB, Air Cond, AM-FM Radio, Dual Wheels - \$6195. '75 GMC Crew Cab, Morysville Body, V8, 4 Speed, PS, PB, Radio - \$5495. '75 Chevy 1/2 Ton Pickup, 6 Cyl, St. Shift, AM FM Radio, Low Miles - \$2995. '74 Chevy 3/4 Ton Pickup, V8, Auto, PS, PB, AC, AM-FM Radio - \$3895. '74 Ford 1/2 Ton Pickup, V8, Auto, PS, Radio, Ranger Model - \$3595. '73 Ford Pickup, 302 V8, 3 Speed, AM Radio, 50,000 Miles - \$2895. '73 Toyota Long Bed Pickup, 4 Cyl, Auto, Radio - \$2595. '73 Chevy Short Bed Pickup, 6 Cyl, St. Shift, 36,000 Miles - \$3095. '72 Chevy Cab & Chassis, V8, 4 Speed, 2 Speed Rear, 24,000 lb. GVW, 167" Wheel Base - \$3195. '71 Datsun Pickup, 4 Speed, With Cap, AM-FM Radio, 1 Owner, 33,000 Miles - \$2195. '70 Ford 12 Ft. Stake Body, V8, 4 Speed, Power Lift Gate, 1100 Lb GVW, New Tires & New Bed - \$3295. '68 Chevy 1/2 Ton Pickup, V8, 3 Speed, Radio - \$1495. '67 El Camino, V8, Auto PS, Like New - \$2495 |
|---|---|

MANY MORE TRUCKS & 4 WHEEL DRIVES TO CHOOSE FROM!

MIKE RHODES & CO.
Rt. 663 & Swamp Pike, Gilbertsville, Pa.
(215) 327-1380
or toll free 800-362-7655

Tank Truck Driver For Heating Oil Deliveries
Fulltime Work Thru Winter Only
W. L. ZIMMERMAN & SONS
Intercourse, PA
717-768-8291

HERDSMAN WANTED
For 80 cow milking herd in Chester Co Good wages, nice house, insurance, plus other benefits, vacation & regular days off
Write to P.O. Box 366 J-56, c/o Lancaster Farming Lititz, Pa. 17543

FARMER WITH DAIRY EXPERIENCE

Salary commensurate to a challenging and diversified family farm.

Comfortable & Pleasant living for a cooperative & congenial family.

For interview state qualifications & references.

P.O. Box 515
Ephrata, Pa. 17522

SALESMAN

Local company seeks aggressive, sincere person to sell fertilizer, seeds and chemicals in the Cochranville area. Must have ability to discuss agronomic and cropping programs with farmers.

WRITE

P.O. BOX 366 J-53,
c/o Lancaster Farming,
Lititz, Pa. 17543

All replies will be held in strict confidence.