

### Fall clean-up helps eliminate stalk borer

FLEMINGTON, N.J. - A thorough garden clean-up this Fall can save your flowers and vegetables from insect problems next Summer, says Robert Schutski of the New Jersey Cooperative Extension Service.

The iris borer, for example, is one of the most destructive insect pests of iris. Females lay their eggs on old iris leaves and other plant material in the Fall. These eggs spend the Winter on iris leaves and hatch in April or May.

The iris borer has only a single brood each year, so cutting the iris leaves and other garden refuse during

the Fall may save iris plants from serious damage next Summer.

Another insect which can attack many vegetables and

flowers in the home garden is the common stalk borer. In the late Summer and Fall, female moths lay their eggs on grass, weeds and plant refuse.

A single female moth may

lay up to 2,000 eggs, each of which will hatch into a borer the following Spring.

A Fall clean-up of weeds and garden refuse will aid considerably in lessening the number of stalk borers present in the garden next Spring.

#### Prevent Bruising

Use a sharp knife when cutting vegetables to prevent bruising. Bruising leads to a loss of Vitamin C which should be retained in vegetables. Nutrients can also be easily lost during rapid boiling as the cut surfaces of vegetables agitate against each other. Reduce heat after vegetables begin to boil.

#### LITTLE HARVEY ELECTRIC FOOD DEHYDRATORS

Horizontal Air Flow  
Even Drying - No Tray Rotation

Call for demonstration:  
**MRS. MELVIN CHARLES**  
Washington Boro, PA  
717-285-4184 — 717-684-5783

## Quick 'n' Easy

9283 8-18



7173 Capture the freedom of the pasture with frolicking horses. Everyone loves horses. Embroider a set to go on pillows, pictures or even the back of favorite dungarees. Pattern 7173. Directions, transfers of ten motifs, each about 5x5".

Go ahead and be ruffled—it's so lovely to give into your own sense of femininity. You'll win compliments at the office, meeting, at dinner in this dress. Printed Pattern 9283. Misses Sizes 8, 10, 12, 14, 16, 18. Size 12 (bust 34) takes 2 3/8 yards 60 inch fabric.

"MUSTS" for a well planned wardrobe—the easy jumper dress and dashing scarf tie blouse. No waist seam—zip jumper up quickly in tweeds, challis. Printed Pattern 9305. Half Sizes 10 1/2, 12 1/2, 14 1/2, 16 1/2, 18 1/2. Size 14 1/2 (bust 37) jumper 2 1/4 yds 54", top 2 1/8 yds 45".

\$1.50 for each pattern. Add 40¢ for each pattern for first-class airmail, handling. Send to:

**QUICK and EASY PATTERNS 170**  
232 W 18 St New York NY 10011

Fashions to Sew (F/W) 75¢  
1979 Needlecraft Catalog 75¢  
Designer Collection #34 75¢

129-Quick/Easy Transfers \$1.50  
128-Patchwork Quilts \$1.50  
127-Afghans 'n' Dollies \$1.50  
126-Crafty Flowers \$1.50  
125-Petals Quilts \$1.50  
124-Gifts 'n' Ornaments \$1.50  
123-Stitch 'n' Patch Quilts \$1.25  
122-Stuff 'n' Puff Quilts \$1.25

Add 25¢ each book for postage handling.

9305  
10 1/2-18 1/2

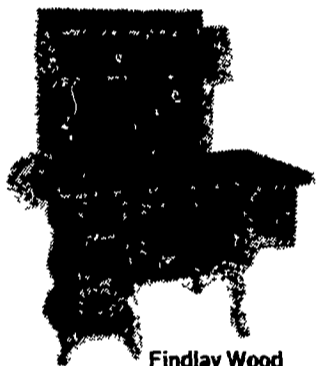
# Fall Sale

NOW  
THRU  
OCT. 20

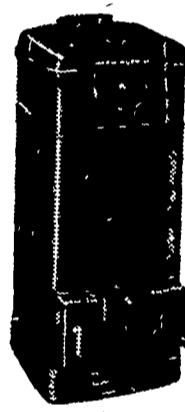
**EARLY ORDER  
PRICES ON  
MONARCH  
GAS RANGES**

**SPECIALS  
ON FULL LINE  
OF COAL &  
WOOD STOVES**

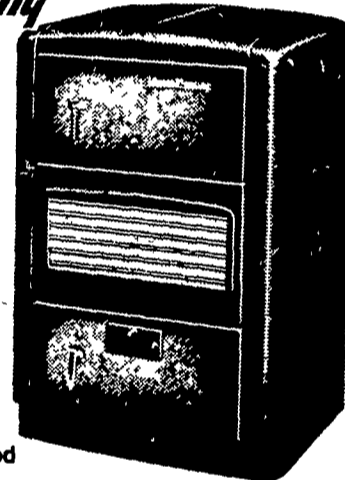
#### Warm Morning



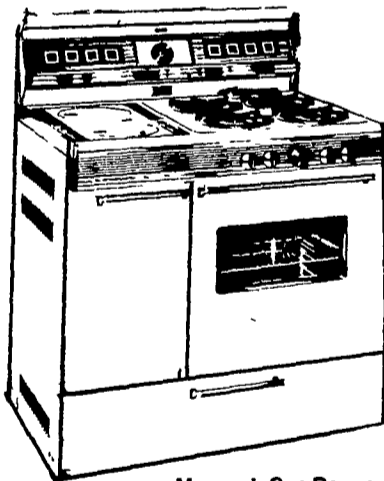
Findlay Wood & Coal Burning Deluxe Cook Stove



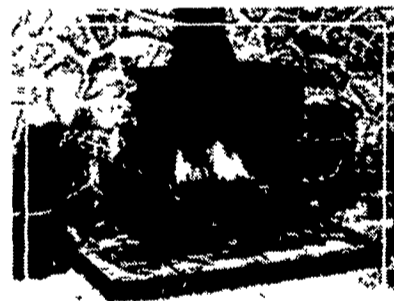
Coal & Wood Heaters



Enterprise Coal Range



Monarch Gas Range

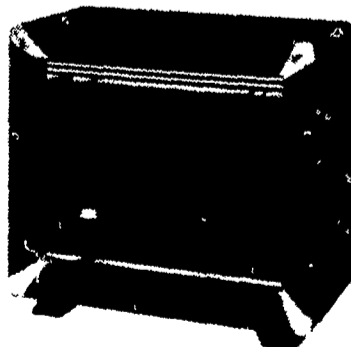


Franklin Fireplace

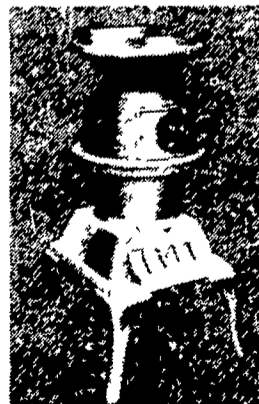
Quality  
WOOD  
BURNING  
"ADD-A-  
FURNACE"



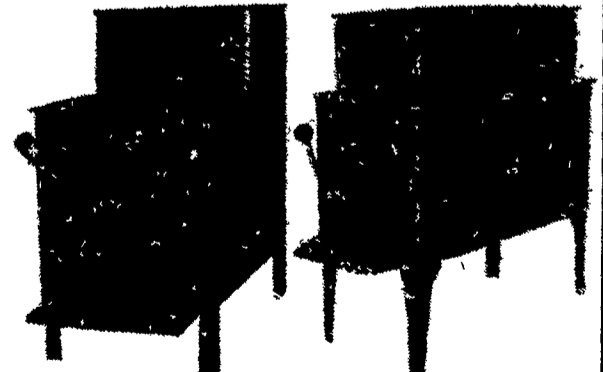
**MONARCH**  
QUALITY SINCE 1896



Warm Morning Wood Burning Circulator



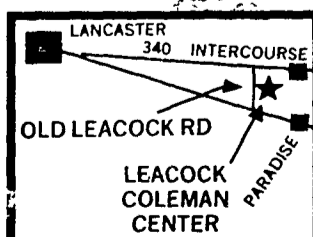
Woodbox Heater



Huntsman Woodburning Heater

### STOP IN & SEE OUR FULL LINE DISPLAY

- COAL & WOOD RANGES
- HEATERS • FIRE PLACES
- CAST IRON STOVES



**LEACOCK**

Coleman Center  
85 Old Leacock Rd.  
RD 1, Ronks, PA

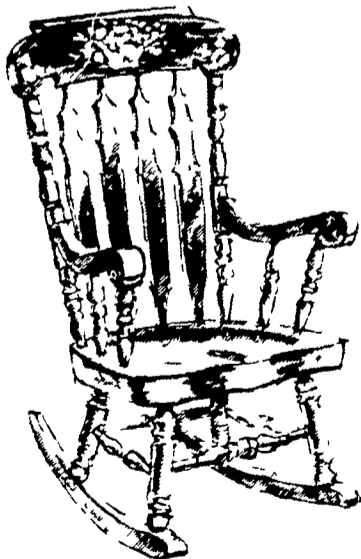


Woodbox Heater

## CLEARANCE SALE

OCT. 7  
to 21

**\$10 OFF**  
ALL PLANK  
BOTTOM  
ROCKERS



- ★ Truckload of good used bedding.
- ★ Extra good prices on Spring Air boxsprings and mattresses; prices are advancing soon.

- ★ Our usual large line of new and used furniture.
- ★ Complete line new and used Warm Morning and Ashley Coal and Wood Heaters. A few oil and gas heaters.
- ★ Ask about our layaway plan.

### FISHER'S FURNITURE

Route 896 - 6 mi south of Strasburg  
In Village of Georgetown, Box 57, Bart, PA  
Hrs: 8 a.m. to 9 p.m. - Mon, Wed, Fri  
8 a.m. to 6 p.m. - Tues, Thurs, Sat  
Closed Wednesday, October 11