

Eberly shows champion 4H steer

By KENDACE BORRY

NEW HOLLAND — Gerald Eberly, showing a Charolais crossbred, took top honors at the New Holland beef show held this week as part of the New Holland Farmer's Fair.

The son of Mr. and Mrs. Clair Eberly, East Earl R1, he is a member of the New Holland 4-H Baby Beef Club. His steer, Snowball, weighed 1080 pounds. This is his seventh year in the club and first champion.

The steer brought \$1.05 per pound at the sale held after the show Thursday afternoon, and was purchased by H.D. Matz, Ephrata; represented by Wayne Weidman.

The reserve champion at the show was a purebred Hereford steer weighing 1050 pounds, shown by Kathy Martin, 17. Her steer Sebastian weighed 1050 pounds and was the second reserve champion shown by the eight year member of the club. She is the daughter of Mr. and Mrs. Robert Martin and Lancaster County's Poultry Queen.

Her animal was sold for 84 cents per pound and bought by Weaver Martin Trucking.

The Angus champion was shown by Emily Weaver, a first year member of the New Holland Club and the daughter of Mr. and Mrs. F. Roy Weaver, Ephrata R1.

Judge for the show was

Henry Gruber, buyer for Arbergast and Bastion Packing Co. in Allentown.

There were 23 animals entered in the show, all shown by members of the New Holland 4-H Baby Beef Club. They averaged 1018 pounds and bringing an average of close to 70 cents per pound under the auctioneer's gavel.

Results of the show follow:
Angus

1. Emily Weaver, Ephrata R1; 2. Janae Martin, New Holland R3; 3. Gary Eberly, East Earl R2; 4. Vicki Bare, Witmer; 5. Stephanie Yost,

Chicken and Egg
It takes chicken eggs 21 days to hatch after the hen begins sitting upon them

Grand Champion—
Gerald Eberly
Reserve Champion
Kathy Martin

Fitting
1. Kathy Martin, 2. Jane Groff, 3. Janae Martin, 4. Robert Groff.

Showmanship
1. Vicki Bare, 2. Dale Hershey, 3. Jane Groff, 4. Kathy Martin.

Crossbreds
1. Gerald Eberly, East Earl R1; 2. Randy Martin, East Earl R2; 3. Darlene Huyard, Lancaster; 4. Mike Martin, East Earl R1; 5. David Fisher, 6. Glenn Yoder, 7. Sharon Martin, 8. Merle Groff, 9. Joanne Groff, 10. Dwayne Peiter.

6. Marlin Groff, 7. Steve Hershey.

Hereford

1. Kathy Martin, New Holland R3; 2. Billy Martin, East Earl R2; 3. Robert Groff, Leola; 4. Dale Hershey, Ronks R2; 5. Jane Groff, Leola 6. Joan Weaver.

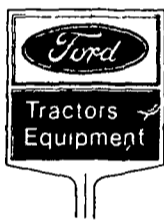
AUTUMN SALE

YOU'LL GO "NUTS" TRYING TO FIND A BETTER DEAL THAN OUR USED EQUIPMENT!

Stock No.	Description	Stock No.	Description
102	Seeder	460	204 Disc
112	Dearborn Scoop	484	309 2-row Corn Planter
122	J2 Wheels	501	6000 Tractor
123	Side Mtd. Mower (Sickle Bar)	502	Front mtd. L&G Blade
129	960 Tractor, 1957, S/N 35545	503	Tiller
139	John Deere L w/Plow, Cult.	506	75 w/34" Mower
152	Farm Loader Fork	507	5000 Tractor, 1967, C 170008
235	960 Tractor, 1956, S/N 103643 w/602 Corn Picker	540	9N Tractor
270	901 Tractor	544	142 Plow Components
343	F12 Farmall	545	19" Push Mower
382	JD 4 bottom Plow	575	CL-40
386	Hawn Eclipse Tiller	576	Side Mtd. Mower
391	10' Oliver Disc	577	H D Motorcycle
448	Cub Cadet Rider	589	24" Bucket
456	250 Baler	615	Snowco Trailer
457	4 post ROPS for 4500	634	D2 Sauder Loader
459	4000 Tractor, 1966	640	4500 Tractor/Ldr., C168578, 1967
		643	145 w/50" Mower

CALL TODAY & CHECK OUR PRICES

You Have Everything To Gain At The Home Of The Friendly People.



LANCASTER FORD TRACTOR, INC.

Take Flory Mill Exit off 283 and go 1/4 mile toward East Petersburg. The Home of The Friendly People 1655 Rohrerstown Road Ph: 717-569-7063

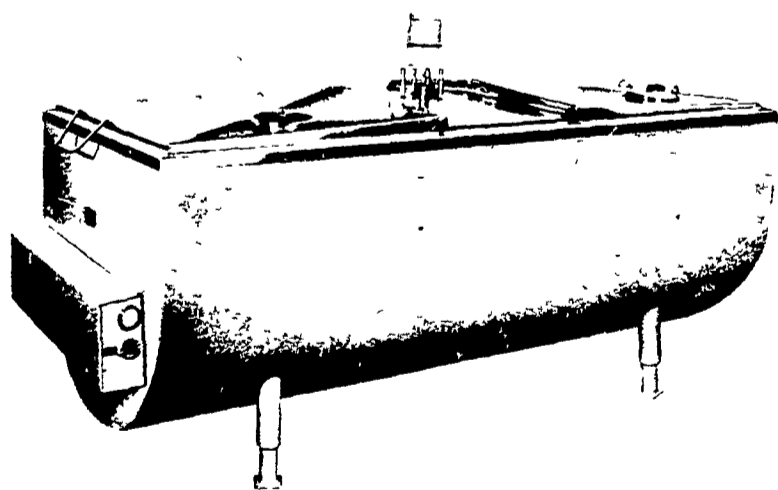


Gerald Eberly, East Earl R2, showed the champion steer at the New Holland Farmers Fair. The animal, known as Snowball, was sold for \$1.05 per pound to H.D. Matz, Ephrata.

ATTENTION TRAILER LOAD SALE
Terramycin Crumbles

ZIMMERMAN'S ANIMAL HEALTH SUPPLY
RD4, Lititz, PA 17543
Ph: 717-733-4466
CLOSED ALL DAY WEDNESDAY.

BARGAIN HUNTERS.....



WE ARE NOW GIRTON DEALERS... BUT WE HAVE SEVERAL 500 & 600 GAL. MILKEEPERS ON OUR LOT.

WE'RE GOING TO MOVE THEM OUT AND THE BARGAINS WILL BE YOURS!

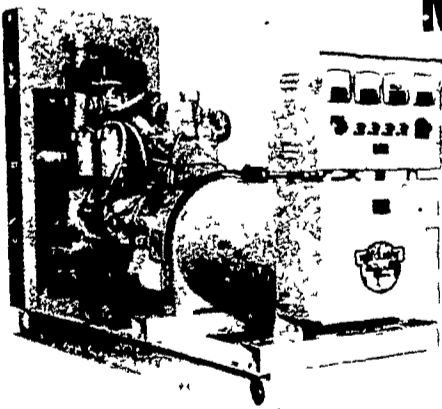
SALES — INSTALLATION — SERVICE

SHENK'S FARM SERVICE

501 E. Woods Drive Lititz, Pa. 17543 Phone 717-626-1151
Bulk Tanks & Therma • Stor
After 5 P.M. Call Titus Burkholder 717-859-1620
Our Service Trucks Are Radio Dispatched
24 HR. SERVICE OFFERED

KATOLIGHT STANDBY POWER SYSTEMS

KATOLIGHT MEANS QUALITY...



Protect Your Operation Against Power Blackouts and Outages

The Following Generator Sizes Are Available For Immediate Delivery.

25 KW L.P. Gas Unit	85 KW L.P. Gas Unit
35 KW Diesel Unit	110 KW Diesel Unit
55 KW L.P. Gas Unit	135 KW Diesel Unit
65 KW L.P. Gas Unit	150 KW Diesel Unit

CONTACT US ABOUT INSTALLATION AND AUTOMATIC TRANSFER SWITCHES



H
HERSHEY EQUIPMENT COMPANY, INC.

SYCAMORE INDUSTRIAL PARK
225 PLANE TREE DRIVE
LANCASTER, PA 17603 (717) 393-5807
Route 30 West At The Centerville Exit