

FABRAL CORPORATION METAL ROOFING & SIDING

LENGTHS	DOUBLE-RIB ALUMINUM HI-STRENGTH ALLOY WIDTH 48" NET	GALVANIZED STEEL 29 GAUGE WIDTH 32" NET	1/4"-29 GAUGE CORRUGATED GALVANIZED WIDTH 24" NET
7'	—	5.49	4.15
8'	9.30	6.29	4.75
9'	—	7.09	5.35
10'	11.65	7.85	5.89
11'	—	8.65	—
12'	13.95	9.45	7.09
14'	16.29	10.99	—
16'	18.59	—	—
18'	20.95	—	—
20'	23.25	—	—
22'	25.59	—	—

A COMPLETE LINE OF MATCHING ACCESSORIES

1 PIECE RIDGE CAP	52"	4.24	—	10'	4.69
2 PIECE RIDGE CAP	52"	5.35	52 1/2" set	4.49	—
10' RIDGE ROLL	—	7.19	—	3.89	—
END WALL FLASHING	52"	3.59	52 1/2"	3.45	28" 1.65
12' FIBERGLASS GREEN	49 3/8"	16.49	33 1/2"	10.93	—

Annular-Thread METAL ROOFING NAILS WITH FLAT NEOPRENE WASHER

	ALUMINUM 500 PACK	GALVANIZED	
		5 lbs	50 lbs
1 1/4"	5.32	—	—
1 3/4"	5.86	5.49	48.67
2"	6.41	5.42	48.05
2 1/2"	4.94	5.17	45.63

BARN DOOR HARDWARE

*51-16 Galvanized RAIL.. 6',8',10',12' per ft	\$ 1.19
*52 Galvanized HANGER pair	11.95
*F51 Galvanized BRACKET	.95
*G51 Galvanized BRACKET	1.45
*H51 Galvanized BRACKET	3.55
*59A Galvanized RAIL..... per ft	2.19
*53 Galvanized HANGER pair.....	13.75
*H551 Galvanized BRACKET.....	4.99
*18 STRAY ROLLER	1.79
*2110-8 GATE HOOK.....	3.19
*17 DOOR BUMPER Alum	1.19
Galv.....	1.98

SHEATHING GRADE 4'x8' PLYWOOD

5/16"	3/8"	1/2"	5/8"	3/4"
7.65	7.79	9.25	12.99	15.49

SQUARE BARN POLES

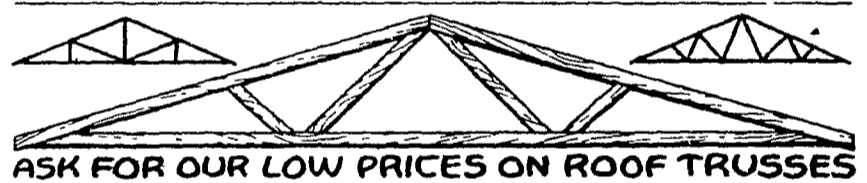
CCA Treated

	10'	12'	14'	16'	20'
4"x4"	5 ³³	6 ⁵⁶	7 ⁴⁶	9 ⁶⁰	—
4"x6"	—	9 ⁴⁸	11 ⁰⁶	14 ⁸⁸	17 ⁴⁰
6"x6"	—	14 ⁴⁰	17 ⁸⁵	20 ⁸⁸	30 ⁶⁰

CENTER MATCH BOARDS 2"x6"x12' MBM CCA **\$430.00**

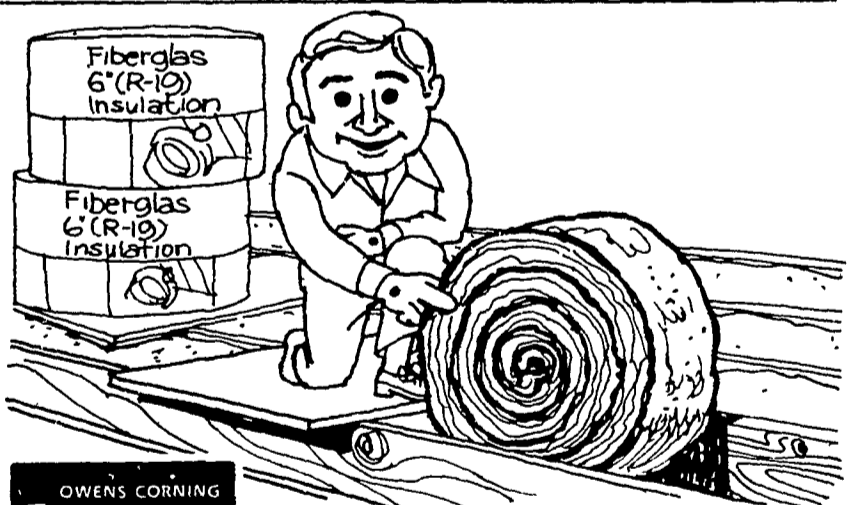
FARM GATE and FENCE BOARDS

	CCA PENTA
1 1/8"x6" R.L.	32 1/2 Lin Ft.



ASK FOR OUR LOW PRICES ON ROOF TRUSSES

MADE TO YOUR SPECIFICATIONS
FIR OR YELLOW PINE



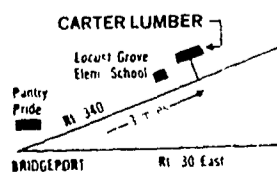
OWENS CORNING FIBERGLAS KRAFT FACED PINK INSULATION

6" x 15"	R-19 KRAFT FACED	3 1/2" x 15"	R-11 KRAFT FACED
6" x 23"	R-19 KRAFT FACED	3 1/2" x 23"	R-11 KRAFT FACED
17 1/2° Sq. Ft.		10 1/2° Sq. Ft.	

OPEN 7:30 TO 5:30 — 6 DAYS A WEEK DELIVERY AVAILABLE



2275 OLD PHILADELPHIA PIKE
LANCASTER, PA. 17602
3 Miles East on Rt. 340
717-397-4829 or 397-4820



RT. 230
ELIZABETHTOWN, PA.
1 Mile East of Elizabethtown
717-367-1886 or 653-8310

