

# Unique swine facility begun

(Continued from Page 1)  
will be turned over to the University for research in field applications as well as feedstuffs substitutes. The manure will be stored in a Slurrystore from the Penn-Jersey people.  
According to Dr. Clifton Baile, who is an associate professor of nutrition in the Department of Clinical Studies of the Veterinary School at the University of Pennsylvania, the facilities are not designed for research. However, he indicated that research

proposals may be forthcoming if they are deemed to be of benefit to all parties involved. While Baile claims credit for the initiation of the project, the monetary resources are coming from eight Lancaster County farmers. An agreement has been reached to purchase 10 acres of land from the New Bolton Center, upon which three buildings will be erected. One will be for breeding and gestation, a second for farrowing purposes, and the third will be a nursery.

The entire operation will be run by two highly qualified and well trained managers. "That's the key to this whole thing," commented John Hess, farmer and feed mill operator who holds one of the shares in the unique partnership.  
Students at the University of Pennsylvania will be given the opportunity to work with the operation for two-week periods in order to increase their knowledge of hog management and medical applications. Thus, the concept is seen as being of possible benefit to hog producers throughout the area since the graduating veterinarians will have had more exposure to pigs than they had previously.

The feeder pigs coming out of the facility will be supplying the original investors at regular intervals in predetermined proportions. The operation will have a capacity of 480 sows producing an estimated 8600 pigs per year. The first gilts and boars are to be in the new facility in February. The Pig Improvement Company, the world's largest supplier of gilts and boars, will supply the breeding stock. The young pigs will be weaned at three weeks of age and leave the premises at eight weeks.  
Both Hess, who spoke on

behalf of the farmers, and Baile, who is the appointed faculty member to work with the project, are optimistic that the program will work. Hess noted that he and his son, John Hess III, as well as his herdsman, Abe Fisher, have become familiar with similar operations in the Midwest. Baile pointed out that neither of the parties involved are going into the venture blindly. Aside from the information which is on hand from the Midwest, the University has probed into the matter on a local level at Hess' hog farm near Intercourse. Abe Fisher manages the hog business there, known as Jet Age Swine Breeders.

When the facilities at New Bolton Center are in operation, the two managers will work closely with two students at a time for two-

week periods. That being the case, the owners are looking for capable managers who will also be able to relate well to students. Baile envisions having the students pick up considerable experience in swine management and handling, including reproduction, feeding, farrowing, and disease control - both preventive and surgical. "The plan has been tested and it has worked very well," he commented.

A corporation, the new facility will be known simply as PPAB Limited. There are ten shares of stock, with six farmers having one each and two others having two shares each. Each share of stock will get half of the feeder pigs every five weeks.

Construction is being handled by Sand Livestock

Systems, Inc., of Columbus, Neb.

The agreement between PPAB Limited and the University provides that all of the manure will be handled by the New Bolton Center. The gutters in the barns will be flushed with water that is returned from a separation system, explained Baile. Harvestore and the University are cooperating in research projects involving manure solids which will be stored in the Slurrystore. The objective is to retain all of the nutrient values of the hog manure that comes out of the new facility.

The manure will either be applied to cropland with injector mechanisms or be used to develop ways for feeding the material to both cattle and hogs.

## DOES YOUR FARM EQUIPMENT HAVE DIESEL PROBLEMS?????

Contact us

### MILLER DIESEL INC.

Specializing in Diesel fuel injection pumps, injectors and turbochargers.  
6030 Jonestown Rd.  
Harrisburg, Pa. 17112  
717-545-5931  
Interstate 81 Exit 26

In addition to our repair service, we offer a fast exchange system for fuel injection pumps, injectors and governors. Let us solve your diesel problems. You can depend on us for fast efficient service.

We welcome all farm equipment dealers business.

## ECHO WEED & GRASS TRIMMER SRM-140D

PERFECTLY BALANCED, GASOLINE POWERED WEED AND GRASS TRIMMER GIVES YOU COMPLETE MOBILITY. HELPS KEEP YOUR YARD AND GARDEN WELL GROOMED.

NEW FOR '78 - HOMEOWNER MODEL

Special

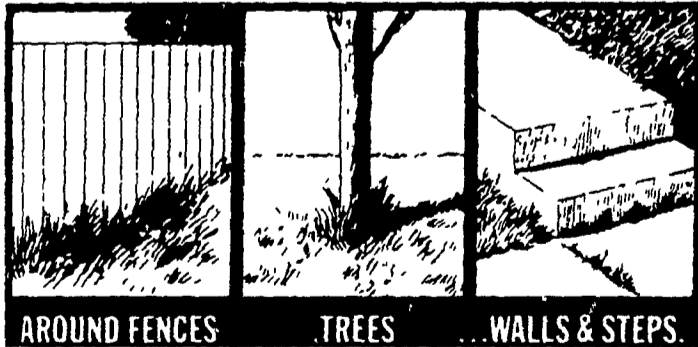
\$129<sup>95</sup>

GOES WHERE NO CORD CAN FOLLOW

At long last the unit that you have been waiting for weighing less than 10 lbs., light weight plus durability easy starting & long time reliability due to the superior design of the KIORTZ engine. This unit has the mobility to track down weeds & grasses wherever they grow, safe, high quality nylon trimmer head cuts closely around fences, walks & etc.

Isn't it time you treated you and your lawn to the best? A Quality Engineered ECHO 140D

ASK FOR IT BY NAME "ECHO 140D"



AROUND FENCES

TREES

WALLS & STEPS

## FARMERSVILLE EQUIPMENT INC.

RD 4, Ephrata, PA

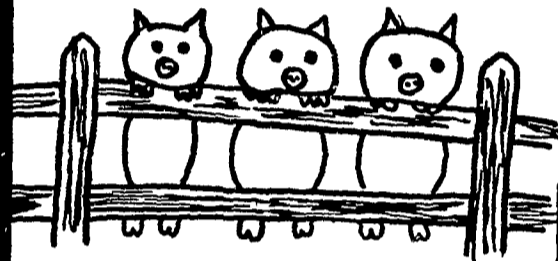
717-354-4271

HOURS

Mon., Tues., Wed., Fri. — 7:30-5:30  
Thurs. — 7:30-9:00  
Sat. — 7:30-3:00

## SOYBEAN ROASTING ON YOUR FARM

WE NOW HAVE TWO ROASTERS IN SERVICE TO GIVE YOU FASTER & MORE PROMPT SERVICE.



This little piggy went to market,  
This little piggy stayed home,  
This little piggy had  
**ROASTED SOYBEANS**

FEED YOUR ANIMALS A TOTAL ROASTED GRAIN DIET.



Tem GRAIN ROASTER

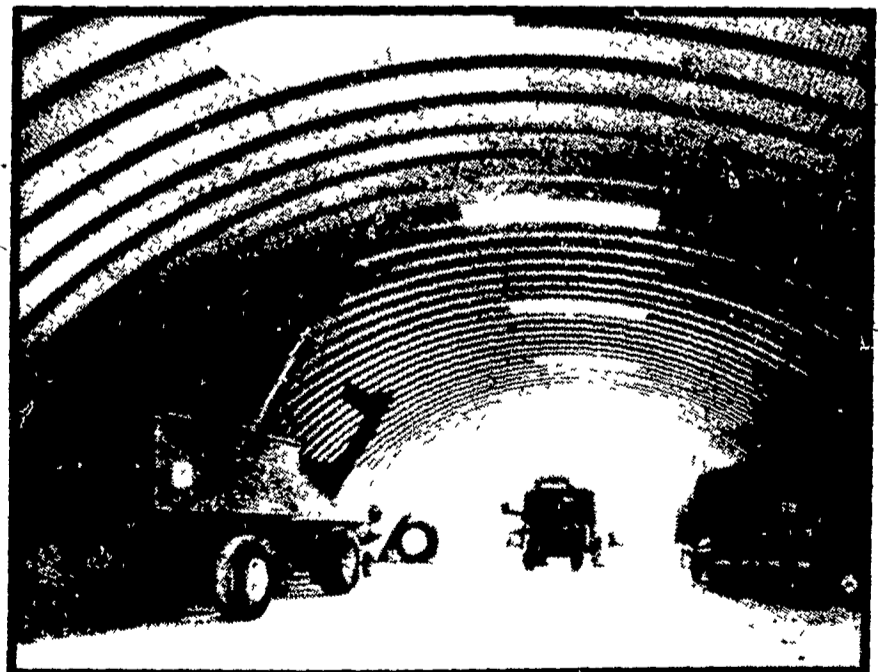
Roasts all grains, (corn, beans, wheat, barley, oats).

CUSTOM SOYBEAN ROASTING DONE IN PA. AND SURROUNDING STATES

**DALE L. SCHNUPP**

RD 6, Lebanon, Pa. 17042 Ph: 717-865-6611

## IT'S NOT TOO LATE FOR GRAIN & STORAGE NEEDS



## MID-ATLANTIC STEEL BUILDINGS

RD1 Box 5, Christiana, PA 17509  
(Lancaster County)  
Ph: 215-593-5326

## MIRACLE SPAN STEEL BUILDINGS

