

Dairy judging forum winners announced

HARRISBURG - A 4-H Cloister High School, Ephrata, Lancaster County, and an FFA team from

annual Pennsylvania 4-H and FFA Dairy Judging Forum held last week at the

Pennsylvania All-American Dairy Show in Harrisburg. The judging was limited to

persons belonging to 4-H and Future Farmers of America organizations in the state. Contestants are judged on their evaluations and decisions in making their own judging events. The forum includes a quiz for contestants on dairy herd management.

In the individual judging competition, Jeff Harding of Brookville, Jefferson County, placed first in 4-H judging, while Kevin Smoker of Stevens, Lancaster County, won top FFA honors.

In the 4-H judging, teams from Berks, Crawford, Somerset and Lebanon Counties came in second to

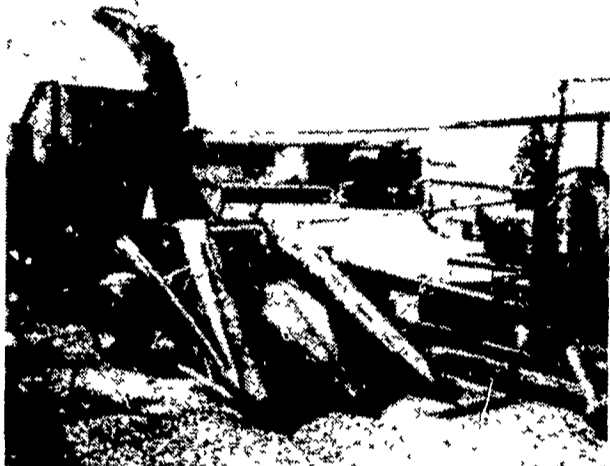
fifth, respectively. FFA teams and placings were: Solanco, second; Mansfield, third; Oxford, fourth, and Northern Bedford.

Members of the Franklin County 4-H winners were: Maryanne Johnson, Deborah Cashell, Alan Grider and Kelly Cordell. The Cloister team consisted of Kevin Smoker, Robert Fox, Curtis Martin and Mark Weiler.

Ranking for individual judging in 4-H competition was, first through fifth, respectively: Jeff Harding, Brookville; Maryanne Johnson, Mercersburg, Franklin County; Melanie Alsdorf, Spartansburg, Crawford County; Steve Shaw, Oley, Berks County; and Todd Grice, Washington, Washington County.

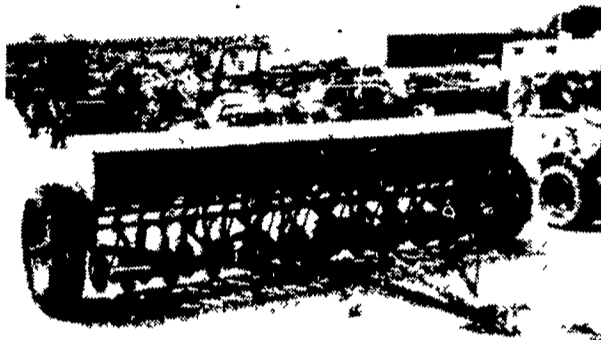
Individual winners in the FFA Forum were, first through fifth, respectively; Kevin Smoker, Stevens; Curtis Martin, Ephrata; Alan Mason, Nottingham; Ken Switzer, Elverson, and Randy Heater, Millerton.

The Pennsylvania All-American Dairy Show is sponsored by the Pennsylvania Dairy and Allied Industries Association in cooperation with the Pennsylvania Department of Agriculture and the Pennsylvania Farm Show Commission.



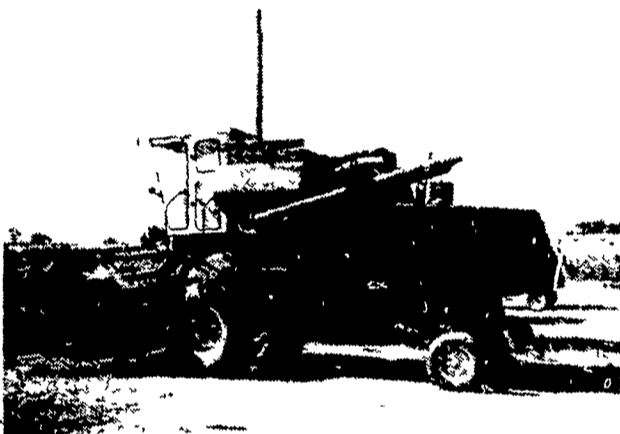
USED HARVESTER

New Holland 880 2-row narrow row head **\$3,650.**



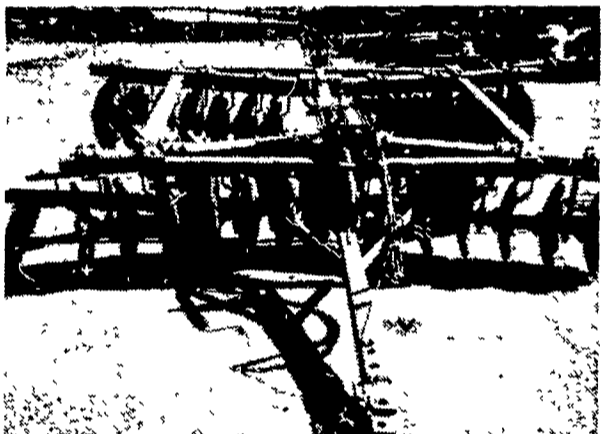
USED GRAIN DRILL

MF 21 x 7 Plain **\$1,650**



USED COMBINE

John Deere 55 Corn Soybean Special 12' Head **\$11,700.**



USED HARROW

M.F. 720 Disk, 28 Blade, 26" Blades w/hyd. Cylinder ... **\$3,950.**

USED HAYBINE SPECIALS

John Deere 1209 \$2,450.00
New Holland 479 2,750.00

USED BALER SPECIALS

New Holland 67 Baler \$1,150 00
John Deere 14T 750 00
John Deere 14T w/ejector 700 00
John Deere 24T 950 00
John Deere 24T w/thrower 1,750 00
New Holland 275 w/thrower 2,350 00
NH 269 w/thrower 1,750 00

USED HARVESTER SPECIALS

NH 717 single row head, 9 knife cutter bar 1,750 00
JD #12 w/single row head 350 00

USED TILLAGE SPECIALS

John Deere 4 16" Hyd Reset Three Point \$2,250 00
Ford 4-18" Semi Mount Spring Reset 2,450 00

USED TRACTORS

MF 175 Diesel \$5,850 00

USED PLANTER SPECIALS

Tag 11650 John Deere 1250-6 Row Plateless \$2,350 00
11941 John Deere 494A 4 Row 650 00
11934 John Deere 494A -4 Row 1,275 00

USED GRAIN DRILLS

John Deere 17 x 7 \$750 00
Co-op 15x7 Fert Grain Drill w/grass seed attach 750 00

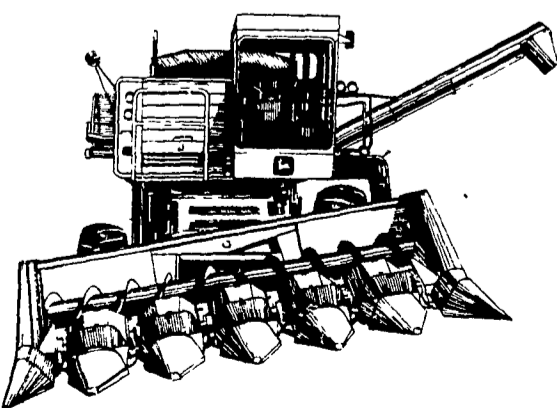
USED COMBINE SPECIALS

AC C w/4 Row Corn Head 14' Platform \$8,750 00
Cockshutt 427 w/Power Steering & 10' Platform 1,450 00

MISCELLANEOUS

New Set 18 4x30 Snap on Duals w/New Goodyear 6 Ply Tires \$1,050 00
3 pt Hitch for 630 tractor 400 00
2 Used Gravity Bin Wagons w/10 ton running gears, 10 00x16 tires, like new ea 1,000 00

Maximize your crop savings on slopes to 18 percent with a John Deere SideHill Combine



On-the-go, automatic separator leveling from feeder house through cleaning shoe is yours with a SideHill 6600 Combine. As the separator levels on slopes to 18 percent, the header pivots to parallel the ground. Keeping the separator level maximizes your crop savings because no material drifts to the downhill side as with a conventional combine. And to master hilly fields, you get a 128 hp. 404 cubic inch diesel engine. The cylinder is 44 inches wide.

Matched headers include 4- and 6-row corn heads and row-crop heads. Platforms with rigid cutterbar in sizes from 13 to 22 feet ... with flexible cutterbar in sizes from 13 to 22 feet.

Evergreen Tractor Co. Inc.

30 EVERGREEN RD., LEBANON, PA 17042, PHONE (717) 272-4641



Plywood Feed Bins - Will Install
Wagon Beds and Gears
Feed and Silage Carts
Farrowing Crates
Pipe and Panel Gates
2-16 Hole Hog Feeders
Outside Calf Hutches
Stihl Chain Saws
Barb & Woven Wire

STOLTZFUS WOODWORK

RD2 Gap, PA. Box 183
1 Mile North Rt. 897 From Gap



Fires Destroy More Than Property

Dreams go up in smoke along with the financial and property damage that fires cause. See us for total farm owners coverage!

Phone 215-267-3894

BERNARD C. MORRISSEY

Farm & Agri-Business Specialist

130 S. 4th St.

Denver, PA 17517

