

## Hoff has champion market hog at Eastern Nat.

TIMONIUM Md. — Danny Hoff, Manchester Md. showed the champion market hog at the Eastern National Livestock Exposition 4-H and FFA market hog show October 6.

Danny, son of Dale and Sylvia Hoff, showed a 215 pound hog. Show judge Dennis Shoup, Michigantown, IN. described the champion hog as being "kind of a constructive hog. He's a young hog that puts out, being long, loose, and deep volumed."

Danny 14, has been a member of the Black Ridge 4-H Club for three years. He shows six of his hogs and has two sows at home which he keeps on his grandfather's farm.

Gary Ruby, Hampstead, Md. was also honored that day, as his market hog was selected for the champion Wm. F. Schluderberg Memorial award. Micky Day, Marriottsville, Md. received the reserve champion award.

The Schluderberg award is for first and second year novice showmen. The two highest place novice exhibitors in each class compete.

### Class 1

(190-200 pounds)

1. Danny Hoff, Manchester Md.; 2. Ramon Hunt, Millersville; 3. Debbie Flanigan, Rocky Ridge, Md.

4. Danny Hoff; 5. Keith Martin, Hampstead Md.

### Class 2

(205-210 pounds)

1. and 2. Gus Parlett, Airville; 3. Danny Hoff; 4. and 5. Steve Strauss, Ephrata.

### Class 3

(215-pounds)

1. Danny Hoff; 2. Yvonne Feeser, Taneytown, Md.; 3. Jeff McConn, West Alexander; 4. Eric Oesterling, Chambersburg; 5. Angela Fought, Carlisle.

### Class 4

(220 pounds)

1. Henry Holloway, Darlington, Md.; 2. Eric Oesterling; 3. Henry Holloway; 4. Kelly Martin, Hampstead, Md.; 5. Steve Strauss.

### Class 5

(225 pounds)

2. Lori Moxley, West Friendship, Md.; 4. Kelly Martin; 5. Angela Fought.

### Class 6

(230 pounds)

3. Mindie Graybill, Smithsburg, Md. 4. Yvonne Feeser; 5. Angela Fought.

### Class 7

(235-240 pounds)

1. Gus Parlett; 2. Micky Day.

### Class 8

(245-250 pounds)

2. Gary Ruby; 3. 4. Yvonne Feeser; 5. Keith Martin.

### Champion Market Hog

Danny Hoff

### Reserve Champion

Michele Rose, Rockville, Ind.



Danny Hoff, Manchester, Md. exhibited the champion market hog October 5 at the Eastern National Livestock Show 4-H and FFA market hog show. Kitty Lee Devilbiss, Maryland's State Pork Queen presented the trophy. Dennis Shoup (middle), Michigantown, Ind. was the show judge.

NOW! Before It's Too Late! Practice **FARM SAFETY**



### ON-THE-JOB BENEFITS

- Lightweight Cushion Crepe Sole and Heel
- Durable Cellulose Insole
- Rugged Full Grain Leather Upper

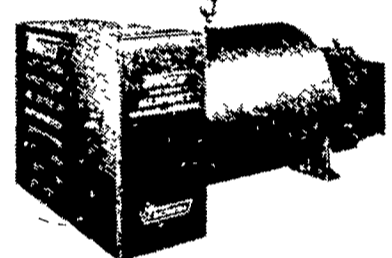


### BOOKS SHOE SERVICE

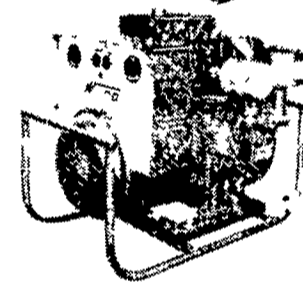
107 E. STATE ST.  
QUARRYVILLE, PA 17566  
717-786-2795



## PTO GENERATORS 15-65 KW



### High Performance Power

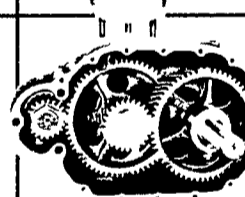


**SAFETY COLOR-CODED VOLTMETER**  
Quickly tells operator when voltage is safe — warns against low or high voltage

**THE OCTOPUS**  
WINCO's exclusive new power plug connect or disconnect the standby load with one convenient plug. This plug saves on installation costs. It is rugged and heavy duty for years of long service and is the ultimate in convenience.

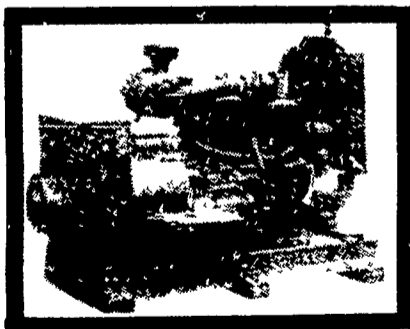


**HANDY RECEPTACLES**  
115/230 Volt for welders heavy motor loads and standby connections 115 Volt for convenient plug-in of electric tools and lights



**PTO GEAR DRIVE MECHANISM**  
Precision ground helical gears eliminate potential service problems of shorter lived chain link drive

## MAXI POWER



### Auto Generator Sets

20 thru 500 KW

### SALE ON 1978 PTO DEMONSTRATORS

- |                      |                      |
|----------------------|----------------------|
| 1 65 KW 3 phase      | 3 20 KW single phase |
| 2 50 KW single phase | 2 15 KW single phase |
| 3 30 KW single phase |                      |

## LEONARD MARTIN CO.

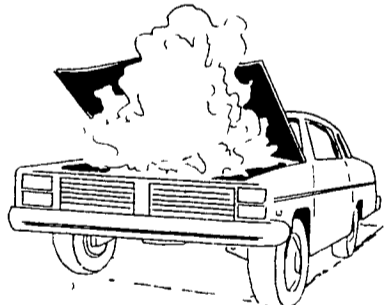
330 FONDERWHITE RD., LEBANON, PA 17042

717-274-1483

### Auto Service Tips

If the warning light shows your engine is overheating pull safely off the road and turn the engine off. Driving faster will not blow more air into the engine and cool it.

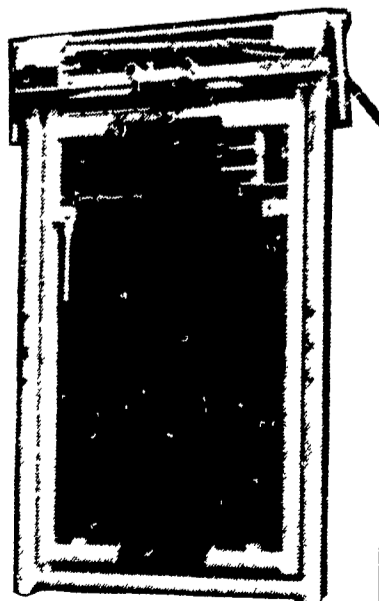
Once off the road raise the hood and see if the problem is obvious — such as a broken hose or radiator leak. Do not raise hood if heavy steam is already being emitted. Pop the hood latch from inside the car and let things cool off.



## TOX-O-WIK® Automatic HEAD GATE

### CATCH CATTLE AUTOMATICALLY

It is easily placed on your receiving chutes as a quick and effective detention for Cattle during treatment



### ELMER M. MARTIN

R.D. 2, Myerstown Phone: (717) 949-2081