

## Jeffries shows champion lamb

YORK - The York County 4-H Lamb Club members held their annual 4-H Lamb Show and Sale at Sechrist Auction, Fawn Grove on Monday, October 2. The judge for the show was William Holloway, Seven Valleys.

The club members sold 42 head of lambs which weighed 4085 pounds and averaged 71 cents per pound. The sale without the champion and reserve champion was 3860 pound average weight per lamb 96 pounds and the average price per pound was 68 cents.

The grand champion of the Show was owned by Jim Jeffries, Delta, which was a 110 pound Dorset Lamb which sold to Ray Mummert, Brodbeck, for \$1.42 a pound. The reserve grand champion was shown by Brian Bankert, Hanover, which was a 115 pound Dorset

Lamb and sold to A. W. Schmidt, Baltimore, Md.; for 80 cents a pound.

Tom Flory, Red Lion, showed the champion Suffolk which weighed 135 pounds and sold to Ray Mummert for 65 cents a pound; Lisa Dobrosky, Glen Rock showed the champion Southdown, which weighed 90 pounds and sold to Irvin Rappoldt Builders, Glen Rock, for 80 cents a pound. Pam Jeffries, Delta showed the champion Shropshire which weighed 110 pounds and sold to Ray Mummert for 72 cents a pound.

Tom Flory, Red Lion showed the champion Cheviot that weighed 90 pounds and sold to Delman Enterprises, New Jersey. The champion Hampshire was shown by Chris Waltersdorf, York, which weighed 105 pounds and sold to Three Sons Butchers,

York for 79 cents a pound. Shelly Bankert, Red Lion, showed a 105 pound crossbred champion and sold to A. W. Schmidt, Baltimore, Md. for 73 cents a pound.

The other first place winners were Class 1 Dorset, first place Beth Myers, Loganville. Class 2 Laurie Dobrosky, Glen Rock first place. Hampshire Class 1,

Pam Jeffries, Delta, first place.

The York County 4-H members will join with Adams County 4-H members to hold their Annual Lamb Roundup on Oct. 24 and 25 at Thomasville Auction. The sale time is set for Oct. 25 at 4 p.m. The sale will be open to anyone who wants to buy a lamb or steer. Arrangements can be made for slaughtering and processing.

## New Hampshire named free of swine brucellosis

NEW YORK, N.Y. - New Hampshire was recognized by the U.S. Department of Agriculture as the 14th Validated Swine Brucellosis-Free state.

A certificate recognizing this achievement was presented to Howard C. Townsend, New Hampshire state Commissioner of Agriculture, at the state office building in Concord, N.H. on September 27.

A. E. Decoteau, area veterinarian in charge for USDA's Animal and Plant Health Inspection Service, made the presentation.

Brucellosis in swine is a bacterial disease caused by the organism *Brucella suis* which can be transmitted to man as undulant fever. About 50 per cent of the annually reported cases of undulant fever can be traced to contacts with infected swine.

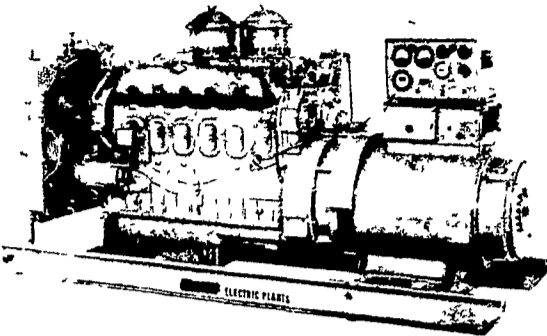
New Hampshire animal health officials "validated" all counties in the state individually by testing all herds with breeding stock and by surveillance for the disease through testing sows and boars at slaughter under the Market Swine Testing program.

The following 13 states are currently Validated Brucellosis-free: Colorado, Iowa, Maine, Minnesota, Montana, Nevada, Oregon, South Dakota, Utah, Vermont, Washington, Wisconsin, and Wyoming.

Validation status is maintained in these states by carrying out required procedures to locate and eliminate infection that might have been introduced by swine imported from other states.

### ELECTRIC GENERATING SYSTEMS

Built to Your Specifications  
Manual or Automatic  
L.P. Gas - Diesel - Gasoline



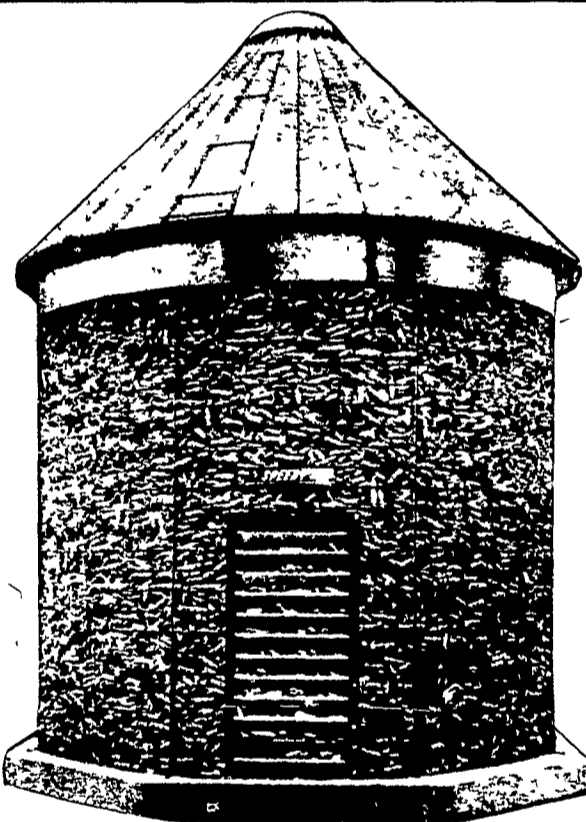
We Also Carry G.M. & Detroit Engine Parts.  
Sales - Service

### MARTIN ELECTRIC PLANTS

Isaac W. Martin, Owner  
Pleasant Valley Rd., RD2  
Ephrata, PA (717) 733-7968



## BAR-LOK CORN CRIBS!



### THE ADVANTAGES OF SPEEDY CORN CRIBS

1 Easy to Erect  
Speedy's Corn Crib goes up fast and easy because of roof rafters and Bar Lok side panels. The steeply pitched roof pushes the corn to the edges - NO WASTED SPACE!



Step 1 Bar Lok Construction saves you time - gives you a strong sturdy crib. Crib wire panels are interlaced to form an eye. A 1 1/2 x 3/8 rod is then inserted through the eye and pushed down to the foundation. Easy simple fast construction.



Step 2 Rafters are bolted to assembled rafter ring. Now you're ready to put the roof panels on. Rafters assure you of proper roof panel placement the first time. No wooden framework to build.

2 Wide Selection  
There is a Speedy Crib for every farm need - priced right for every budget.  
• Choice of 900, 1200 or 1700 Bushel Sizes  
• 5 or 2 Gauge Wire Mesh Side Panels

3 Durable  
The Speedy 5 Gauge Crib won't bulge or sag - stands straight and tall year after year. For extra strength and durability get the Speedy 2 Gauge Crib - outlasts other cribs - even with full capacity loads. Galvanized wire - not aluminum paint.

4 Save Money and Energy  
Corn stored in a Speedy Crib is dried by Mother Nature without the use of costly energy. This saves money and also helps conserve our scarce energy resources.

### ALL SIZES IN STOCK FARMERSVILLE EQUIPMENT INC.

RD4, EPHRATA, PA. 717-354-4271  
Hours: Mon. thru Fri. - 7:30 till 5:30  
Thurs. till 9:00 - Sat. till 3:00

1586—160 PTO hp



1486—145 PTO hp



1086—130 PTO hp



986—105 PTO hp



## International® Series 86 Tractors

... offering power and comfort far beyond anything you've ever experienced

This is the year to go International. Because new Series 86 tractors offer operating sophistication that exceeds that of any tractors ever built. Plus maintenance and service ease not previously achieved in farm tractors. Add in many other design advancements that sweep away preconceived ideas about tractors, and you're left with only one decision: What size International to settle on!

- **NEW! Mid-mount Control Center.** Puts you far forward, so your ride is better, handling is easier, visibility is unexcelled.
- **NEW! Clear-view Design.** You look out through large expanses of tinted safety glass. Lighting patterns, front and rear, are unequalled.
- **NEW! Control System.** Armchair consoles, extra-convenient throttle, power-assisted brakes and clutch, modular instrument cluster.
- **NEW! World of Quiet.** Interior sound levels are reduced dramatically as low as 80 dB(A) on some models.

\*All horsepower figures are mfrs. est.

886—85 PTO hp



Hydro 186—104 PTO hp



INTERNATIONAL®  
AGRICULTURAL  
EQUIPMENT

## SWOPE & BASHORE, INC.

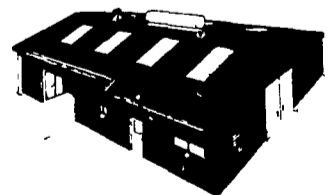
RD 1, Myerstown, Pa.  
Located 1 Mile S. of Int. 78 & 6 Miles  
N. of Myerstown on Rt. 645 in Frystown  
PHONE: 717-933-4138



## VERNON MYERS, INC.

### STEEL BUILDINGS & GRAIN STORAGE

R.D. 4 - Box 845  
Lebanon, Pa. 17042  
Phone: (717) 867-4139



GRAIN BINS ON STOCK NOW  
BEING SOLD AT LAST YEAR'S PRICES:  
30' Storage 30' Drying 24' Drying  
DON'T DELAY! CALL NOW!



COMMERCIAL and AGRICULTURAL BUILDINGS  
WE OFFER COMPLETE ERECTION ON ANY SIZE OR STYLE BUILDING

### Mail Coupon Today!

- SEND STEEL BUILDINGS LITERATURE
- SEND GRAIN STORAGE LITERATURE

NAME \_\_\_\_\_

ADDRESS \_\_\_\_\_

CITY \_\_\_\_\_ STATE \_\_\_\_\_ ZIP \_\_\_\_\_

TELEPHONE \_\_\_\_\_