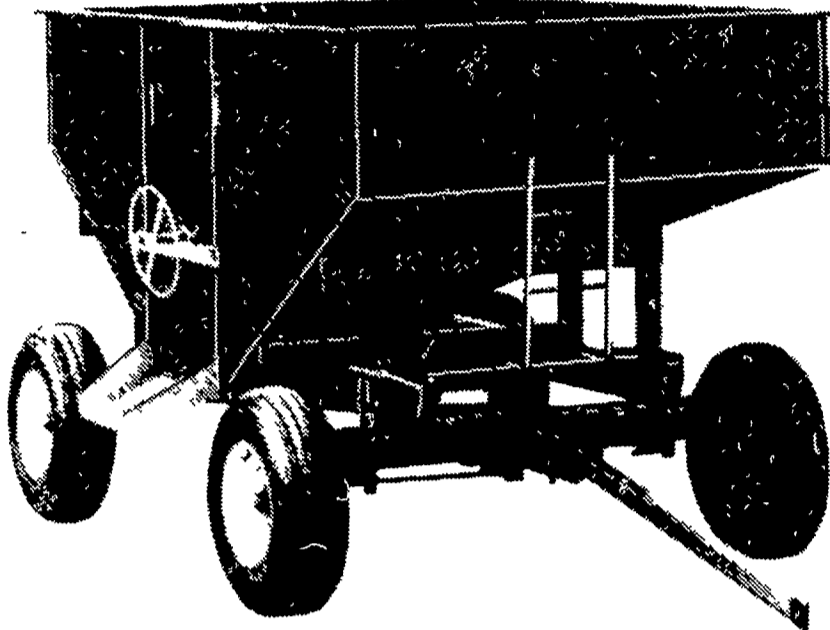




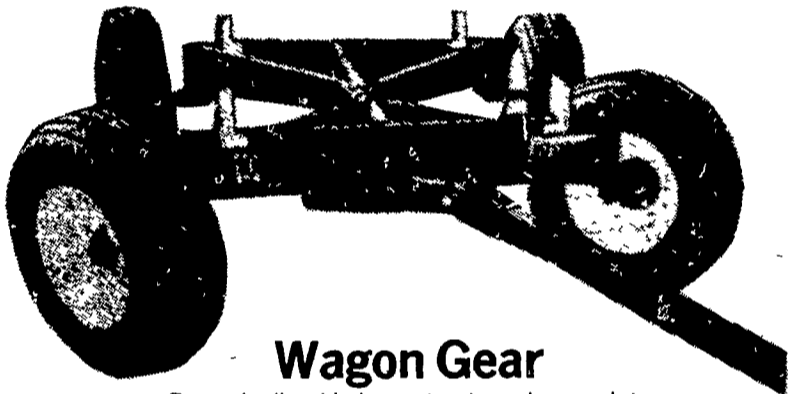
CENTRAL TRACTOR



\$339⁹⁵

Frnt. Included

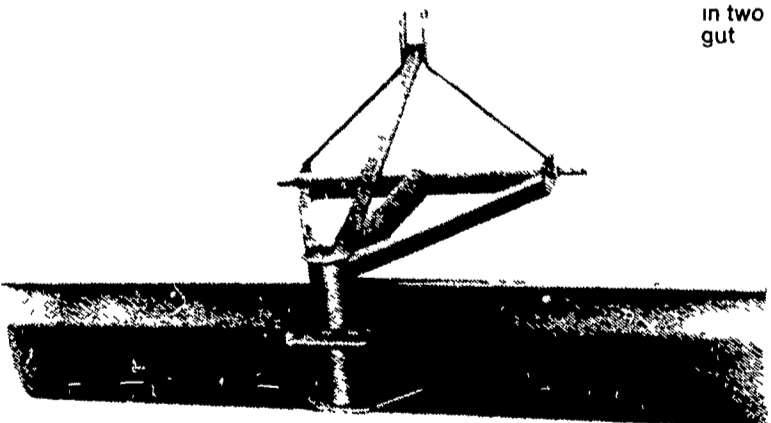
165 Bu. Gravity Box
#28900-250 Reg. \$364.95 + \$30.00 Frnt.
Wagon & Tires Not Included.



Wagon Gear

Rugged all-welded construction, heavy duty spindles, adjustable wheel base, standard tongue. All units come less tires

- | | | |
|---------------------------------|------|-------------------------|
| 5 Ton
8030-046 Reg \$279 95 | SALE | 259⁹⁵ |
| 6 Ton
8039-046 Reg \$319 95 | SALE | 299⁹⁵ |
| 8 Ton
8045-046 Reg \$364 95 | SALE | 344⁹⁵ |
| 10 Ton
8059-046 Reg \$449 95 | SALE | 414⁹⁵ |



144⁹⁹

Reg 179 99 / SAVE 35 00
20225-157

6' Tractor Blade

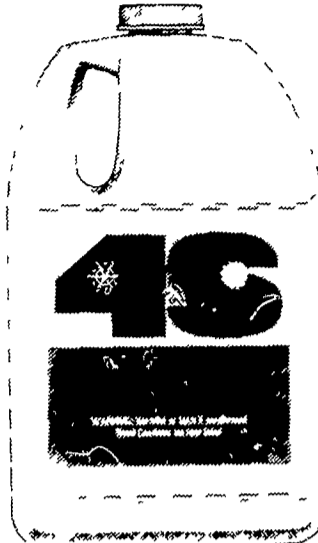
164⁹⁹

Reg 199 99 / SAVE 35 00
20225-157

7' Tractor Blade

Versatile blade adjusts quickly to 5 angles, easily offsets to left or right, and tilts using side link adjustment. Designed for tractors up to 35 horsepower

**SALE
PRICES
GOOD
SAT.
OCT. 7
THRU
OCT. 14**



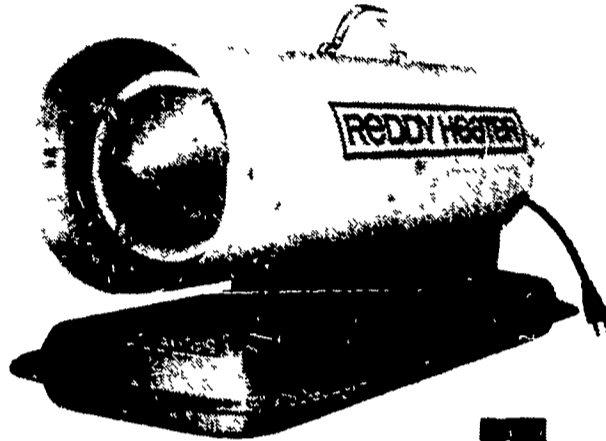
LIMIT 12 per customer
NO DEALERS

277

Reg 3 19 / SAVE 13%
18284-234

**1 Gal. 4S Brand
Anti-Freeze**

Same formulation as famous name brands. Will mix with all ethylene-glycol base products. Protects against winter freeze-ups and helps prevent summer boil-overs. Guards your engine against rust and corrosion.

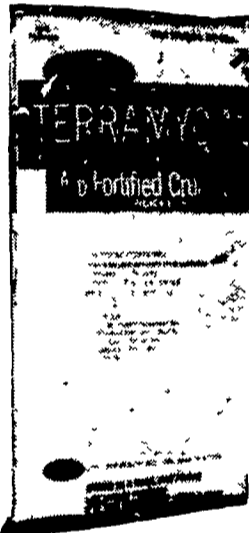


119⁹⁹

Reg 139 99 / SAVE 20 00
24000-260

**30,000 BTU
Space Heater**

Completely portable, burns kerosene or #1 fuel oil, operates ten hours on a 2 25 gal tank of fuel, reliable solid state ignition and automatic flame out control.

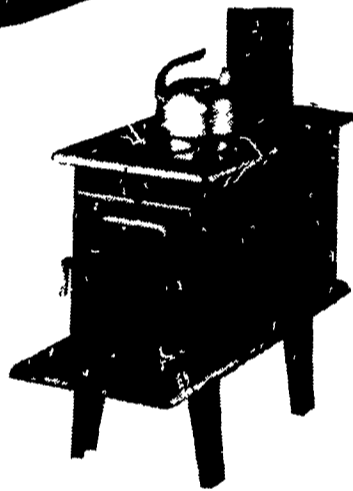


847

Reg 9 97 / SAVE 1 50
19015-141

**Terramycin
Crumbles**

Increased disease protection fights in two ways, in the blood and in the gut.

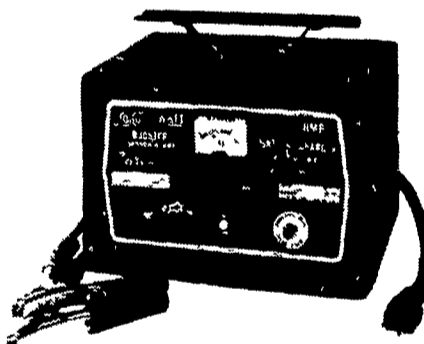


49⁹⁹

Reg 62 50 / SAVE 12 51
12004-340

**Wood Burning
Boxwood Stove**

Reliable, just load it with wood, unaffected by power loss or fuel shortages. Ideal for heating an add-on room, garage, basement or cabin.



SAVE up to 12⁰⁰

**Booster
Chargers**

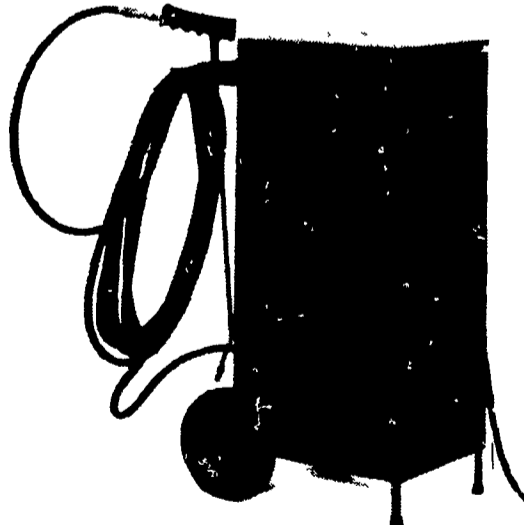
Solid state circuitry for dependability, high temperature copper wound transformer, full wave silicon rectifiers and a heavy duty 18 gauge steel case. Comes with 8 foot grounded power cord and 6 foot output cables.

100 Amp
16280-084 Reg 74 99

SALE
64⁹⁹

200 Amp
16281-084 Reg 101 99

SALE
89⁹⁹



259⁹⁹

Reg 284 99 / SAVE 25 00
25402-293

**High Pressure
Washer**

Handy cart mobility 500-600 psi, computerized mixing for easy cleaning and spraying. Built-in tank eliminates the need for bottles, etc. Special duty 3/4 Hp motor 5-way valve selects cleaning phase desired 100% chemical, metered chemical, rinse tank filling, and off 2 gpm pump 6 ft grounded power cord 35 1/2" high, 15 1/2" wide, 18 3/4" deep. Requires 15 amps power at 115 volts.

FARM & FAMILY CENTER

LANCASTER

1570 Manheim Pike, Hwy. 72 North
Ph: 717-569-0111

Sale Hours:

8 to 6:00 Monday - Thursday
8 to 6 Friday; 8 to 5 Saturday

CHAMBERSBURG

1351 Lincoln Way East
Ph: 717-264-8282

Sale Hours:

9 to 6 Monday - Thurs.
9-9 Friday
9-5 Saturday