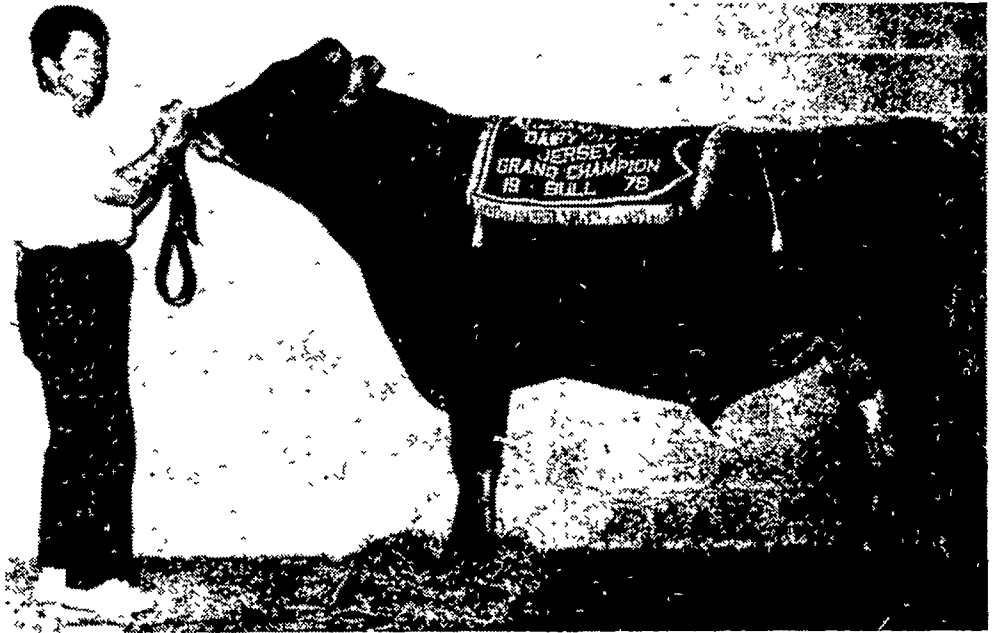


# Show winners pictured



One of many 4-H'ers who participated in the excitement of the Holstein shows at the Pennsylvania All-American was Paul Cashell of Chambersburg. His heifer was named reserve junior champion at the Pennsylvania Junior Dairy Show.



Mildred Seeds, Chester County Jersey breeder, showed the grand champion bull at the All-American Dairy Show in Harrisburg on Thursday. The bull was bred by the exhibitor, as was his dam, an excellent cow in the 20-cow herd owned by Miss Seeds. The grand champion, a senior yearling, is sired by Advancer Sleeping Milestone. A full brother to this bull stood second in the junior calf class. The next major contest for Miss Seeds, who was presented with the Herdsman's Award for Jerseys on Friday morning, is the National Jersey Show, to be held in Kentucky.



The grand champion Jersey cow, owned by Donald R. McKay and Family of Mount Sterling, Ohio, was exhibited in Harrisburg by Douglas McKay.



The grand champion Milking Shorthorn at the Pennsylvania All-American Dairy Show belonged to Weg Acres of Fort Atkinson, Wis. At the halter is Jeff Gerner.

awarded the trophy for Beef. Liane was also named as the master showman in the beef show while the master fitter was Darlene Dietrich, Hamburg.

Lori Haas, Douglasville showed her 1240 pound Chianina-Angus crossbred steer to grand champion

honors, followed by Darlene Dietrich with the reserve grand champion. Results of the Beef Show follow:

**Light Lightweight**  
1. Ronald Sutliff, 2. James Heffner.

**Medium Lightweight**  
1. Glenn Yanos, 2. Glenn

Heffner, 3. Kenianne Rarick.

**Heavy Lightweight**  
1. Wilson Hoffman, 2. James Esbach, 3. James Leiby.

**Light Mediumweight**  
1. Dennis Dietrich, 2. Ann Holcombe.

**Medium Mediumweight**  
1. Christine Hoffman, 2. Carol Strause, 3. Ronald Sutliff.

**Heavy Mediumweight**  
1. Andrew Haas, 2. Liane Haas, 3. Ronald Heffner.

**Light Heavyweight**  
1. Darlene Dietrich, 2. Michael Strause, 3. Tom Hafer.

**Medium Heavyweight**  
1. Elaine Heffner, 2. Marianne Yanos, Michael Rarick.

**Heavy Heavyweight**  
1. Lori Haas, 2. Cathleen Wisser, 3. Sarah Hoffman.

*The Lancaster County Century Farm owners will be recognized at the annual Farm City Week banquet to be held on November 9.*

## FFA hog sale held at York

YORK - After fattening his FFA market hog into a 200 pound grand champion winner, 15-year-old Dan Boyle then fattened his bank account when the animal brought \$2.00 a pound during the York Fair's annual FFA hog sale.

Hatfield Packing Company of Hatfield, N.J., put

the final bid on the top-selling hog and then recapped the effort by paying 85 cents per pound for the 215-pound reserve champion winner, exhibited by David Lease of Southwestern High School.

Winner Day Boyle is the son of Mr. and Mrs. Arthur Bankert of

Lewisberry R1. He is in his second year of FFA project work in the Gifford-Pinchof chapter at Northern High School at Dillsburg.

Robert Sechrist, of Sechrist Sales, Stewartstown, represented Hatfield Packing during the sale, held in the York Fair's roofed livestock exhibition ring.



Dan Boyle, left, topped the York Fair's FFA hog sale with his grand champion market entry. David Lease was second high seller with his reserve placed animal at right. Hatfield Packing Company, represented by Robert Sechrist, purchased both.

## farm program s farm heritage

Program, ad-  
partment of  
coming year,  
ry Kent D

t recognizing  
s which have  
ritage of the

near farmers  
s. "The hard-  
somewhat by  
es and ideals  
mmunity life  
reliance and a

in certifi  
program, but

the Agriculture Department estimates at least 2,000 more farms which are eligible for certification.

To be eligible for certification as a Pennsylvania Century farm, a farm must have been owned by the same family for the last 100 consecutive years, and a family member must currently reside on the land. In addition, the farm must consist of ten or more acres of the original holdings or gross at least \$1,000 a year from the sale of agricultural products.

The Century Farms Program was initiated as part of the nation's bicentennial observance in 1976, but is being continued for its value in promoting the ideals of the family farm and the importance of farming to Pennsylvania's economy. Completed application forms will be held in the State Archives for use by future historians.

The application forms are available by writing Century Farms Program, Pennsylvania Department of Agriculture, Room 201, 2301 North Cameron Street, Harrisburg, Pennsylvania 17120 or by calling 717-787-5085.