

Livestock market and auction news

Lancaster Market

Mon. Sept. 25, 1978
Lancaster, Pa.

| Cattle | Calves | Hogs | Sheep |
|-----------------------|--------|------|----------|
| Today | 1050 | 162 | 1078 106 |
| Last Monday | 1301 | 231 | 795 125 |
| Last Year | 1043 | 240 | 1245 64 |
| Monday's Auction | 600 | 167 | 1062 115 |
| Last Monday's Auction | 943 | 143 | 782 125 |

CATTLE: Compared to last Wednesday slaughter steers mostly steady; slaughter heifers weak to 1.00 lower; cows firm to 1.00 higher; bullocks steady; bulls mostly steady.

SLAUGHTER STEERS: High Choice and Prime 3-4 1150-1325 lb. 56.50-57.85; Choice 2-4 1000-1375 lb. 54.25-56.50, few lots 56.50-56.85; high Good and low Choice 2-3 52.75-55.00; Good 2-3 49.00-53.00; Standard 1-2 47.00-49.50.

SLAUGHTER HEIFERS: Choice 2-3 850-1050 lb. 49.60-52.75, couple head 53.00-53.75; Good 2-3 850-1000 lb. 45.50-49.50.

COWS: Utility and Commercial 1-3 40.50-44.25, couple individual Utility 45.50-46.75; load Utility and Commercial 2-3 950-1125 lb. beef breed 42.00-46.00; Cutter 1-2 38.00-40.50, few 40.75-42.00; Canner and low Cutter 36.00-38.50.

BULLOCKS: Choice 1000-1275 lb. 51.25-53.50, couple 54.00-55.25; Good 1000-1250 lb. 47.00-51.00.

BULLS: Yield grade 1 1100-1500 lb. 48.75-52.75, couple 52.75-54.25; yield grade 2 1000-1250 lb. 46.00-49.50.

VEAL CALVES: Vealers fully steady, instances 4.00 higher on 80-115 lb. weights.

VEALERS: Prime 260-325 lb. 88.00-92.50; Choice 160-290 lb. 78.00-90.00; 120-160 lb.

Vintage Livestock

Vintage, Pa.
Tuesday, Sept. 26, 1978

| Cattle | Calves | Sheep |
|--------------|--------|--------|
| Today | 839 | 649 39 |
| Last Tuesday | 1227 | 695 29 |
| Last Year | 1190 | 796 31 |

CATTLE: Compared to last Tuesday slaughter steers 50-75 higher, instances 1.00 higher; slaughter heifers 50-1.00 higher; cows 50-1.00 higher; bulls and bullocks not fully established. Supply included 50 per cent slaughter steers and 33 per cent cows.

SLAUGHTER STEERS: High Choice and Prime 3-4 1100-1450 lb. 57.00-58.10; Choice mainly 2 1050-1300 lb. 57.35-58.00, few head 58.50-59.00; Choice 2-4 1000-1350 lb. 54.75-57.00, few 57.00-57.50; high Good and low Choice 2-3 53.00-55.25; Good 2-3 50.00-54.00; Standard 1-2 47.00-49.50.

SLAUGHTER HEIFERS: Choice 2-3 875-1025 lb. 50.75-53.60; Good 2-3 850-1000 lb. 48.25-50.50.

COWS: Utility and Commercial 1-3 41.00-43.50, few 43.50-44.10, couple 45.50-46.25; Cutter 1-2 38.75-41.25, few 41.50-42.75; Canner and low Cutter 36.00-39.00.

VEAL CALVES: Vealers uneven, Choice 160-300 lb. steady to weak, high Good and low Choice 80-115 lb. 5.00-8.00 higher; slaughter calves 5.00-8.00 lower.

70.00-82.00; high Good and low Choice 190-320 lb. 68.00-80.00; 120-170 lb. 68.00-75.00; 80-115 lb. 60.00-70.00.

SHEEP: Spring lambs mostly steady; slaughter ewes 3.00-4.00 higher.

SPRING LAMBS: Choice 85-105 lb. 62.00-64.00; Good 65.00-110 lb. 52.00-58.50.

SLAUGHTER EWES: Utility and Good 25.00-32.00. Market courtesy of USDA.

Lancaster Auction

Lancaster, Pa.
Wednesday, Sept. 27

| Cattle | Calves | Hogs | Sheep |
|--------------------------|--------|------|--------|
| Today | 1175 | 46 | 1117 0 |
| Last Wednesday | 1198 | 73 | 917 4 |
| Last Year | 885 | 92 | 763 30 |
| Wednesday's Auction | 946 | 50 | 1184 0 |
| Last Wednesday's Auction | 789 | 82 | 859 4 |

CATTLE: Compared to Monday slaughter steers firm to 50 higher, with average Choice and below mostly 50 higher; slaughter heifers firm to 50 higher; cows mostly steady; bulls and bullocks not fully tested.

SLAUGHTER STEERS: High Choice and Prime 3-4 1180-1350 lb. 56.00-57.75, couple lots 1240-315 lb. 58.10-58.35; Choice 2-4 975-1400 lb. 54.75-57.00, few 57.00-57.50; high Good and low Choice 2-3 53.50-55.50; Good 2-3 49.60-54.25; Standard 1-2 75-50.25.

SLAUGHTER HEIFERS: Choice 2-3 880-1080 lb. 51.00-53.60; Good 2-3 800-975 lb. 46.00-50.00.

COWS: Utility and Commercial 1-3 40.50-43.25, couple 43.50-44.60; Cutter 1-2 38.50.

VEAL CALVES: Vealers

Supply included 308 in graded sale of which 28 per cent sold to return to farm.

VEALERS: Choice 160-280 lb. 74.00-80.00 couple 81.00-87.00, 120-160 lb. 80.00-84.00; high Good and low Choice 160-270 lb. 59.00-71.00, 120-160 lb. 74.00-78.00, 80-120 lb. 55.00-76.00, 70-80 lb. 55.00-39.00, couple lots 60-65 lb. 42.50-50.00.

RETURNED TO FARM: Few 95-110 lb. Holstein heifers 95.00-110.00, 13 head 100-115 lb. 118.00-121.00 few 90-95 lb. 65.00-75.00; 50 head 100-115 lb. Holstein bulls 93.50-84.50, one lot 120-135 lb. 75.50.

SLAUGHTER CALVES: Choice 300-420 lb. 55.00-60.00; Good 290-400 lb. 48.00-55.00.

SHEEP: Spring lambs not fully established; slaughter ewes 4.00-6.00 higher.

SLAUGHTER EWES: Utility and Good 23.00-33.00, ew head 20.00-23.00. Market courtesy of USDA.

New Holland Livestock

New Holland, Pa.
Thurs. September 28, 1978

| Cattle | Calves | Sheep |
|---------------|--------|--------|
| Today | 1058 | 664 46 |
| Last Thursday | 1344 | 695 18 |
| Last Year | 1430 | 802 49 |

CATTLE: Compared to last Thursday slaughter steers 50-75 higher, with standard and low good 2.00-3.00 higher; cows 1.00-1.50 higher; bullocks not fully established; bulls 3.00-4.00 higher. Supply included 55 per cent slaughter steers and 32 per cent cows.

SLAUGHTER STEERS: High Choice and Prime 3-4 1100-1300 lb. 56.60-58.25; Choice mainly 2 1100-1325 lb. 57.25-57.85, couple 58.35-58.75; Choice 2-4 975-1350 lb. 55.25-57.50, few 54.75-55.25; high good and low choice 2-3 54.50-56.75; good 2-3 52.75-54.75; standard 1-2 49.50-53.00.

COWS: Utility and Commercial 1-3 42.00-44.50, few 44.75-45.75; Cutter 1-2 39.75-42.50, few 42.50-43.00; Canner and low Cutter 36.00-39.50.

BULLOCKS: Couple Choice 1100-1200 lb. 54.50-56.00.

BULLS: Yield grade 1 1100-1600 lb. 53.75-56.25; yield grade 2 1000-1300 lb. 50.00-53.25.

VEAL CALVES: Vealers uneven, some weakness on Choice and Prime 160-300 lb., although high Good to average Choice 80-160 lb. firm to 5.00 higher.

VEALERS: Prime 260-320 lb. 90.00-98.00, few 100.00-106.00; choice 160-280 lb. 77.00-92.00, 120-160 lb. 80.00-90.00; high Good and low Choice 120-250 lb. 75.00-85.00, 80-115 lb. 68.00-80.00, few 70-85 lb. 60.00-70.00.

RETURNED TO FARM:

not well tested, few sales 80-115 lb. 3.00-5.00 higher.

VEALERS: Couple Choice 250-300 lb. 85.00-88.00; bulk high Good and Low Choice 80-115 lb. 67.00-75.00; few 95-115 lb. Holstein heifers returned to farm at 100.00-110.00.

SHEEP: None. Market courtesy of USDA.

Lancaster Weekly

Fri., September 29, 1978

| Cattle | Calves |
|-----------|-----------|
| This Week | 5850 1525 |
| Last Week | 6427 1623 |
| Last Year | 7358 1913 |

CATTLE: Slaughter steers firm to 50 higher with late sales Standard and Good 1.00-3.00 higher; slaughter heifers 50-1.00 higher; cows 1.00-1.50 higher; bullocks scarce, few sales steady to firm; bulls closed the week 3.00-4.00 higher. Supply included 38 per cent slaughter steers, 14 per cent cows, 4 per cent heifers, 3 per cent bulls with the balance feeder steers including approximately 1200 for Friday afternoon auction.

SLAUGHTER STEERS: High Choice and Prime 3-4 1100-1350 lb. 56.60-58.35; Choice mainly 2 1100-1325 lb. 57.25-58.00, few head 58.50-59.00; Choice 2-4 975-1400 lb. 54.75-57.00, few 57.00-57.50; high Good and low Choice 2-3 53.50-56.00, few late 56.00-56.75; Good 2-3 52.50-54.75; Standard 1-2 47.00-53.00.

SLAUGHTER HEIFERS: Choice 2-3 850-1050 lb.

Bulk 90-115 lb. Holstein bulls 79.00-93.00, several 94.00-99.00, one lot 120-125 lb. 75.50; bulk 95-115 lb. Holstein heifers 89.00-110.00 with around 25 head 118.00-128.00.

SLAUGHTER CALVES: Choice 280-380 lb. 65.00-70.00, 350-550 lb. 55.00-65.00; few Good 300-450 lb. 54.00-62.00.

SHEEP: Woolled lambs steady to weak; slaughter ewes 3.00-5.00 higher.

WOOLED LAMBS: Good 60-90 lb. 45.00-57.00; few Choice 75-115 lb. 57.00-61.00.

SLAUGHTER EWES: Utility and Good 23.00-31.00. Market courtesy of USDA.

B & R CATTLE CO.

RD 1, Marietta, PA
17547
Office Phone:
(717) 653-8164

Specializing In
Stockers & Feeders
JOHN BOWMAN

Ph: (717) 653-5728

RON RANCK
Ph: (717) 656-9849

50.75-53.75; Good 2-3 850-1000 lb. 45.50-50.00, few 50.00-50.50.

COWS: Utility and Commercial 1-3 40.50-44.50, few 44.75-45.75; Cutter 1-2 39.00-42.50, few 42.50-53.00; Canner and low Cutter 36.00-39.50.

BULLOCKS: Choice 1000-1275 lb. 51.25-53.50, few 54.00-56.00; Good 1000-1250 lb. 47.00-51.00.

BULLS: Yield grade 1 1100-1800 lb. closed at 53.50-56.25; yield grade 2 1000-1300 lb. 50.00-53.25.

VEAL CALVES: Vealers uneven, Choice and Prime steady to weak although high Good to average Choice 80-160 lb. firm to 5.00 higher; demand good for calves returned to farm.

VEALERS: Prime 260-320 lb. 88.00-98.00, couple 100.00-106.00; Choice 160-290 lb. 77.00-92.00, 120-160 lb. 80.00-90.00; high Good and low Choice 120-250 lb. 74.00-85.00, 80-115 lb. 65.00-80.00, 70-85 lb. 55.00-70.00, couple lots 60-65 lb. 42.50-50.00.

RETURNED TO FARM: Bulk 90-115 lb. Holstein bulls 79.00-93.00, several 94.00-99.00, one lot 120-125 lb. 75.50; bulk 95-115 lb. Holstein heifers 89.00-110.00 with around 25 head 118.00-128.00.

SLAUGHTER CALVES: Choice 280-380 lb. 65.00-70.00, 350-500 lb. 55.00-65.00; few late 55.00-62.00.

SHEEP: Woolled lambs steady to weak; slaughter ewes 3.00-5.00 higher.

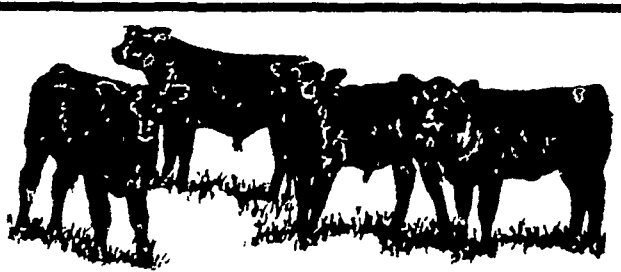
WOOLED LAMBS: Good 60-90 lb. 45.00-57.00; few Choice 75-115 lb. 57.00-61.00.

SLAUGHTER EWES: Utility and Good 23.00-31.00. Market courtesy of USDA.



LEBANON VALLEY LIVESTOCK MARKET, INC.

1 mile East of
Fredericksburg
along Route 22
PHONE:
JONESTOWN
865-2881
Sale very Tuesday at
1:30 P.M. starting with
feeder cattle and pigs



LANCASTER STOCKYARDS WEEKLY SALES

SLAUGHTER SALES — MON. & WED. 10:00 A.M.
VEALERS, LAMBS, HOGS — MON. & WED. 11:00 A.M.
STOCKER & FEEDER SALE — FRIDAY 11:00 A.M.
HOG AUCTION — SATURDAY 9:30 A.M.

SPECIAL NOTICE

As of Saturday, October 7, all fat hogs will be sold at auction beginning sharply at 9:30 a.m., and all consignments will be weighed upon arrival as usual from 6 a.m. to 9:30 a.m.

NEXT FEEDER PIG SALE - Oct. 10
NEXT GRADED CATTLE SALE
Oct. 12 - 6:00 P.M.

Equipped To Receive Your Livestock
24 Hours A Day, 365 Days A Year.

PRIVATE TREATY DAILY
LANCASTER STOCKYARDS, INC.
(717) 394-2611

Vintage Sales Stables, Inc.

BULLS, STEERS,
BUTCHER COWS,
LAMBS AND VEAL CALVES
SOLD ON COMMISSION

SALE EVERY TUESDAY - 11 A.M.
HOG SALES
WEEKLY: WED. & SAT. - 9 A.M.
EVERY THURSDAY - 12:30 P.M.
HAY & STRAW SALE

Get calves in early for grading & weighing
No weight loss

FOR MARKETING INFORMATION
PHONE 717-768-8204
HOME PHONE 215-458-5060
L. ROBERT FRAME, MANAGER

Box 100 Paradise, PA.
10 miles East of Lancaster on Rt 30

NEW HOLLAND The Action Auction

AUCTIONS make the difference in marketing livestock!

NEW HOLLAND makes the difference in auctions!

MONDAY'S AUCTION:
8:00 A.M. - Fat Hogs
10:00 A.M. - Horse Sale
11:00 A.M. - Hay, Straw & Ear Corn
1:30 P.M. - Fat Steers, Bulls, Cows & Veal

WEDNESDAY'S AUCTION:
12:00 Noon - Hay, Straw & Ear Corn
12:00 Noon - Dairy Sale
1:00 P.M. - Feeder Pig Sale

THURSDAY'S AUCTION:
11:00 A.M. - Beef Sale
Order of Sale: Bulls, Fat Steers, Cows, Veal
4:30 P.M. - Calf Sale

NEW HOLLAND SALE STABLES INC.
New Holland, PA
Abram W. Diefenbach, Manager Phone: 717-354-4341