

Pa. Farm Museum Harvest Days Oct. 7-8

LANCASTER -- Harvest Days, the Pennsylvania Farm Museum's annual celebration of the harvest season, will be held October 7 and 8. The outdoor event will feature live demonstrations of over forty activities traditionally associated with harvest-time in rural Pennsylvania. All activities are scheduled from noon to 5 p.m. each day.

Apple butter making, cider pressing, threshing, butchering, sauerkraut making, candle-dipping, corn mulling, and butter making are but a few of the harvest-related activities to be demonstrated. Special activities include operation of the museum's antique steam tractors, a Pennsylvania long rifle shoot, and performances of traditional folk music. On Saturday, a genuine Conestoga wagon will be drawn about the

museum grounds by a six-horse team.

A partial list of Harvest Days activities include: apple butter making, cider pressing, bean snapping, bed roping, mattress stuffing, beekeeping, blacksmithing, broom-making, butchering, butter making, candle-dipping, corn milling, cornhusk braiding, cornpone baking, gunsmithing, saddlery, herb tea brewing, and ice cream making.

Also included are open hearth cooking, pottery, quilting, rifle shoot, rye straw basket making, sauerkraut making, scythe sharpening, steam tractor operation, soap making, spinning, threshing, tin-smithing, tobacco culture, vegetable drying, conestoga wagon, whittling, weaving, woodworking, wool dyeing.

This year marks the 19th annual Harvest Days program at the Farm Museum. The museum is

located about four miles north of Lancaster on the Oregon Pike, Route 272.

Admission to Harvest Days will be \$3 for adults, free for children under 12 and senior citizens over 65.

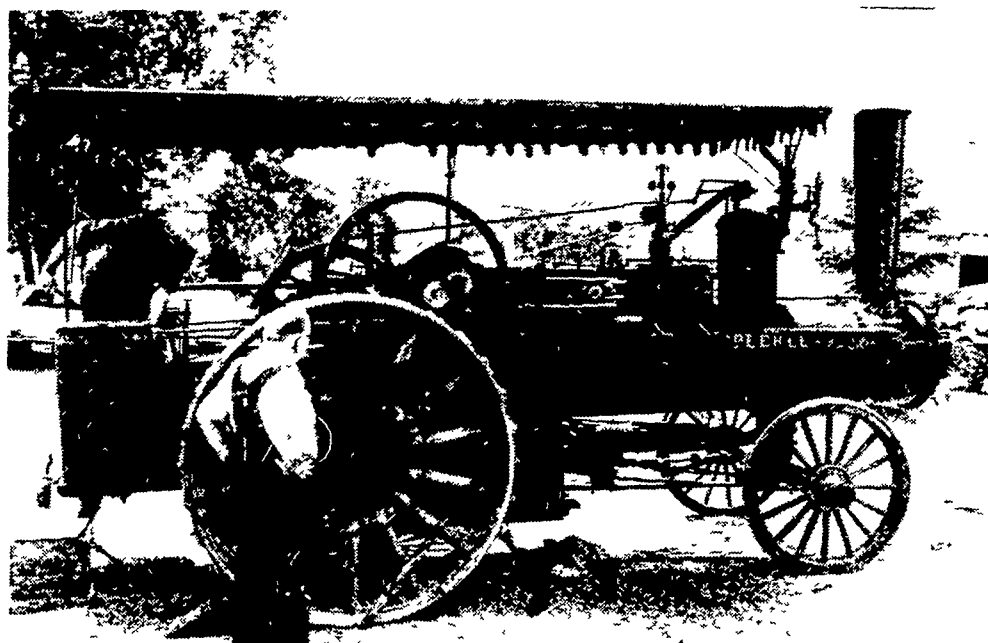
For more information about Harvest Days, one can contact the Farm Museum at 717-569-0401.

York Co. tour set Oct. 11

YORK -- The York Agricultural Stabilization and Conservation Service in conjunction with other participating agencies has announced plans for its annual tour, set for Wednesday, October 11.

Participants will meet at Queensgate Shopping Center at 8:30 a.m. with stops planned at the following points of interest:

- the Michael Wright farm, with commodity and facility structures and operations;
- the George Wolf farm, specializing in potato, grain and egg production;
- the York County Solid Waste Landfill;



During the Pa. Farm Museum's Harvest Days, the special activities include operation of the museum's antique steam tractors.

Central Pennsylvania 4-H'ers

(Continued from Page 134)
secretary, treasurer, and news reporter. She also assisted with club activities and events as a teen leader.

The state swine contest winner completed projects in several units of swine breeding and management, dairy, veterinary science, health, safety, home management, clothing, and teen leadership.

Locally, she took part in the 4-H fashion show, fitting and showmanship contests, demonstration day, achievement night, and officers training.

Denise also participated in the Regional 4-H Deomon-

stration Day, District and State 4-H Junior Dairy Show, District and State 4-H Dress Revue, Farm Show, State 4-H Achievement Days, Pennsylvania Association of Farmer Cooperatives Summer Youth Institute, Keystone International Livestock Exposition, and Minnesota 4-H Exchange Program.

She was selected as Pennsylvania's Jersey Queen, Pennsylvania Outstanding 4-H Pork Producers, State Jersey Award, and was a Keystone 4-H Award winner in swine and dairy.

PUBLIC SALE of 65 ACRE FARM AND PERSONAL PROPERTY SATURDAY, OCTOBER 14

at 10:30 A.M.

Located at RD #1 Spring City, along the Bridge St. Extension, 1/2 mi. North of Rt. 23, near Sunny Slope Dairy, East Vincent Twp., Chester Co., Pa.

REAL ESTATE

House - 2 1/2 story stone w/stucco, 1st floor has 4 rooms, including modern kitchen. 2nd floor has 4 lge bedrooms, full bath & walk in closet. Basement and attic.

Bank Barn - Stone and Frame 45' x 56', 27 cow stalls, box stalls, tin roof, milk house and 11' x 58' silo.

Equip. Shed and Out Bldgs - 22' x 42' w/corn crib, cement floor, 2 car garage, lg. utility shed and spring house.

Water Supply - Well & Pressure System, Stream and very nice pond.

School District - Owen J. Roberts (High School), East Vincent (Elem.).

Zoning - R-2, lot size - 2 acres minimum.

Ground - Terrain is level to very gentle slope, 45 acres tillage, 5 A. woods, 15 A grass land; approx. 1,425 ft. road frontage.

Comments - This property has a very nice setting several hundred ft. off main road back a level farm lane. Large shade trees and easy working soil all add to the adaptability of this fine property.

Real Estate to be sold at 11 A.M., Terms 10% down day of sale with settlement by 1979. Inspection anytime by appointment - CALL: Horning Farm Agency, Inc. 215-286-5183.

PERSONAL PROPERTY

D-14 Allis Chalmers Tractor, 3 bottom A.C. plow, 3 sec. pull harrow, Woods clippers, Cadet #6 rotary mower (like new), metal feed cart (new), #206 New Idea Manure spreader, 2 wheel farm trailer, flat farm wagon, 3 pt. hook-up scraper blade, one horse sleigh, 27 in. Jacobson riding mower, small push mower, 2 DeLaval milk buckets w/units, Stainless steel vat, bucket rack, 2 milk cans, 2 stainless steel strainers, 3 ton screw jack, 40 ft. magnesium ladder, chicken crates, egg baskets, elec. fencer, metal fence posts & new barbed wire, tires w/rims, various quantities of lumber, 1/2 bu. baskets, berry crates & boxes, barn lantern, rubber tire wheel barrow, bee hives, forks, shovels and small items not mentioned.

HOUSEHOLD GOODS

Dressers, chests of drawers, wardrobes, small crib, clothes tree, filing cabinet, china closet (sq.), few chairs, davenport, 2 small bookcases, mirrors & pictures, lamps, stands, trays and odd dishes, crocks, cherry seeder, lg. tea kettle, iron fry pan, double barrel shot gun (L.C. Smith), wooden tub, window screens, horse blanket, Sm. elec. oven, Kitchen aid dishwasher, 17.6 Cu. ft. G.E. refrig. (7 yrs. old), Elec. fry pan, blender, iron, 2 elec. clocks, radios, fan, sm. oil heater, etc.

Terms by:

IRVIN G. & GLADYS KOLB
Atty: William M. Cremers Jr.

Alvin & Elton Horning, Auctioneers
Horning Farm Agency, Inc.
Main St., Morgantown, Pa.
215-286-5183

HERD DISPERSAL

at G.M. LIVESTOCK MARKET, INC.,
Duncansville, PA.

MONDAY, OCTOBER 2

1:30 P.M.

Herd consists of 25 Registered Canadian Holstein cows, several classified Very Good. This is a high producing herd with type and good udders.

For Information Call
SHERMAN GLICK

Lewistown, PA

717-248-0960 or

FRED McCARTNEY

Dry Run, PA

717-349-2393

PUBLIC SALE SATURDAY, OCTOBER 7

10:00 A.M.

Located 1/2 mile North of Elizabethville,
Pennsylvania, on Route 225.

ANTIQUES & COLLECTIBLES

3-Pc Lt. Oak Bedroom Suite; round top trunk; Oak bureau and washstand; 3-pc. Victorian living room suite; 2-pc. Walnut bedroom suite; half spindle plank bottom nursing rocker; one-drawer stand; empire bureau; iron butcher kettle; square stand with large marble and claw feet; treadle sewing machine; decorated cottage bed; gold leaf Victorian wall mirror; oak rocker; tin advertisement sign "National Fire Insurance Co." Hartford, Connecticut; late Adams cup, saucer, dessert and plate; 130 Pieces of Azalea Dishes such as snack trays, dinner plates, vegetable bowls, covered tureens, square plates, oblong celery trays, bouillon cups, etc.; Green Spatter Peafowl Cup and Saucer; Red Spatter Peafowl Cup; Custard glass bowl signed Northwood; 2 kerosene lamps; shell and jewel water pitcher and glass; stick spatter plate; assortment of miscellaneous glass such as pressed, carnival, depression, etc.

HOUSEHOLD ITEMS

3-pc. Walnut veneer bedroom suite; upholstered chair; Electrolux sweeper; 4-drawer filing cabinet; assortment of sheet music; approximately 40 bundles of tile roofing; dishes; pots; pans; etc.

TERMS: CASH. Personal checks accepted only from persons having an established account with Auctioneer.

Estate of J.R. LESHER

Lee D. Dockey
Auctioneer-Estate Liquidator-Appraiser
Box 164 Pillow, PA 17080
Phone: 717-758-6004



GAP AUCTION

FRIDAY EVE., OCTOBER 6, 1978

5:30 P.M.

Located off Route 41 - Lancaster Avenue opposite Turkey Hill Mint Market - Cross RR Bridge.

**ANTIQUES AND HOUSEHOLD GOODS
SOLD AT EVERY AUCTION.**

CONSIGNMENTS ON MONDAYS
FROM 8:00 A.M. TO 7:00 P.M.

OTHER DAYS BY APPOINTMENT.

Call us for pick-up service

IRA STOLTZFUS & SON, Auctioneers

442-4936 or 442-8254

CONDUCTORS ALL TYPES PUBLIC SALES

PUBLIC SALE 16 ACRE FARMETTE SATURDAY, OCTOBER 21

At 2 P.M.

Located 2 miles north of the village of
Bowmansville along Rt. 625 in Lancaster
County, Pennsylvania.

Tract of land consists of approx. 16 acres of which 11 acres are under cultivation, balance pasture and woodland with spring fed stream flowing through. Improvements include

11 Room Frame House

with bath, oil fired hot water baseboard heating system installed 7 years ago with summer-winter hook up for hot water, storm windows included, also 2 rooms have wall to wall carpet and carpeted stairway, also included are

Bank Barn 56' x 34'

and 1 car garage. Never failing spring water piped to both house and barn.

Inspection of real estate by appointment only by calling 215-445-5383.

Terms by:

ALVIN & ANNA MAE WISE

Auctioneers:

LeRoy S. Horst and

Paul W. Horst

Attorney: J. Marlin Shreiner