

# Livestock market and auction news

## Peoria Livestock

September 28, 1978

**CATTLE:** Receipts this week: 4400; last week: 5300; year ago: 4800.

Compared with last week's close, slaughter steers fully steady. Slaughter heifers steady. Cows firm. Bulls steady. Receipts about 65 percent slaughter steers, 30 percent slaughter heifers, balance mainly cows.

**SLAUGHTER STEERS:** Choice and prime 3-4 1100-1285 lbs. 55.00-56.00, load 1100 lbs. 56.50; couple loads same grade mostly 4's few 5's 1255-1360 lbs. 54.00-54.50; choice 2-4 1050-1200 lbs. 54.50-55.50; 900-1050 lbs. 53.00-54.50; mixed good and choice 2-4 900-1200 lbs. 52.50-54.50; good 2-3 49.50-52.59.

**SLAUGHTER HEIFERS:** Choice and prime 3-4 900-1050 lbs. 53.00-53.50; load 53.75; choice 2-4 850-1000 lbs. 51.50-53.00; 800-900 lbs. 51.00-51.50; mixed good and choice 2-4 800-1000 lbs. 49.50-51.50; good 2-3 46.00-49.50.

**COWS:** Utility and commercial 1-3 38.50-40.50; highdressing utility 41.00-42.00; cutter 1-2 35.00-38.50; canner 32.50-35.00.

**BULLS:** Yield grade 1-2 1100-1800 lbs. 41.00-47.00; few yield grade 1 47.50-48.50. Market courtesy of USDA.

## Joliet Cattle

Sept. 28, 1978

**CATTLE:** Friday through Wednesday's salable receipts 5,900, 5 days last 6,580, same period last year 7,124. Trading on steers slow on Monday, turning moderate on Wednesday. Trading on heifers moderately active. Average Choice and better slaughter

steers closed the week steady to weak compared to Wednesday of last week. Good to average Choice steers closed the week 25 to 50 higher. Slaughter heifers 25 to mostly 50 higher. Cows 1.00 to 1.25 higher.

**SLAUGHTER STEERS:** Mixed High Choice and Prime 3-4 1150-1300 lbs. 55.25-56.00 Monday, 55.25-55.50 Wednesday. Choice 2-4 1050-1250 lbs. 54.00-55.25 Monday, 54.50-55.55 Wednesday. Mixed Good and Choice 2-3 1000-1200 lbs. 52.00-54.00 Monday, 52.50-54.50 Wednesday. Few Choice Holsteins 1450 lbs. 49.50 Monday.

**SLAUGHTER HEIFERS:** Mixed Choice and Prime 3-4 950-1050 lbs. 52.75-53.50 Monday, 53.25-53.75 Wednesday. Choice 2-4 900-1050 lbs. 51.50-52.75 Monday, 52.25-53.25 Wednesday. Mixed Good and Choice 2-3 800-1000 lbs. 49.50-51.50 Monday, 50.50-52.00 Wednesday.

**COWS:** Utility and Commercial 1-3 40.00-42.25. Market courtesy of USDA.

## G & M Market

Duncansville, Pa.

Sept. 25, 1978

Market report higher this week.

**DAIRY COWS:** 600.00-930.00

**STEERS:** Good to Choice 52.00-56.50.

Standard to Good 48.00-52.00.

**HEIFERS:** Good to Choice 48.00-52.25; Standard 43.00-48.00.

**FEEDER STEERS:** Good Choice 300 to 500 lbs. 68.00-74.00; 500 to 700 lbs. 58.00-65.00; Standard to Good 50.00-58.00.

**BULLS:** 1200 to 1584 lb. 49.00-53.25; 900-1200 lb. 43.00-49.00.

**COWS:** High Choice Prime 41.50-43.80; Good 40.00-41.50; Utility

36.00-40.00; Cutters 34.00-36.00; Cannors down to 32.00.

**CALVES:** High Choice 85.00-89.00; Good to Choice 70.00-85.00; Standard to Good 50.00-70.00.

**FARM CALVES:** Bulls 90-120 lb. 74.00-83.00; Farm Calves Heifers 90-120 lb. 85.00-119.00.

**HOGS:** 200 to 240 lbs. 51.50-53.10; 190-270 lb. 45.00-50.00.

**SOWS:** 39.00-45.00.

**BOARS:** 33.00-39.75.

**FEEDER PIGS:** 25-35 lb. 30.00-42.00; 35-50 lb. 40.00-54.00.

**SHEEP:** Lamb Good 55.00-62.00; Lamb Medium 48.00-55.00.

## Green Dragon Auction

Ephrata, Pa.

September 22

DAIRY COWS

103 dairy cows and heifers reported with market stronger.

Load fresh cows from Butler Co. \$1020.00 - 1160.00, Springers 840.00-1020.00; first calf heifers 790.00-980.00. Load of Penna springers 680.00-810.00; Herd of 40 head fresh cows 900.00-1080; herd in all stages of lactation 610.00-840.00; springers 640.00-860.00; 1 load short bred heifers 505.00-640.00.

**STEERS:**

Good to Choice 54.00-56.00; Standard to Good 50.00-54.00; Other 45.00-50.00.

**HEIFERS**

Good to Choice 47.00-49.00; Other 43.00-47.00.

**FEEDERSTEERS:**

Good to Choice 70.00-72.00; Standard to Good 65.00-70.00; Other 58.00-65.00; Feeder Bulls 48.00-55.00. Other 45.00-48.00.

**BULLS:**

Light trimmers bulls 47.00-49.00; others 46.00-48.00.

## Special Market

September 21, 1978

Special Feeder

Yearling Sale

Culpeper, Va.

There were 1413 head sold. All cattle were graded by Representatives of the VDAC's Division of Markets, Livestock Section on VDACS standards and sold by the hundredweight.

Choice & Fancy 500-700 lbs. 63.00-68.50; 700-800 lbs. 59.50-65.50; 800-1000 lbs. 55.50-63.25.

Good 500-700 lbs. 65.00; 700-800 lbs. 63.50-68.50; 800-1000 lbs. 56.50-62.50.

Medium 500-700 lbs. 59.75-62.50; 700-800 lbs. 60.75-62.50; 800-1000 lbs. 56.50-59.00.

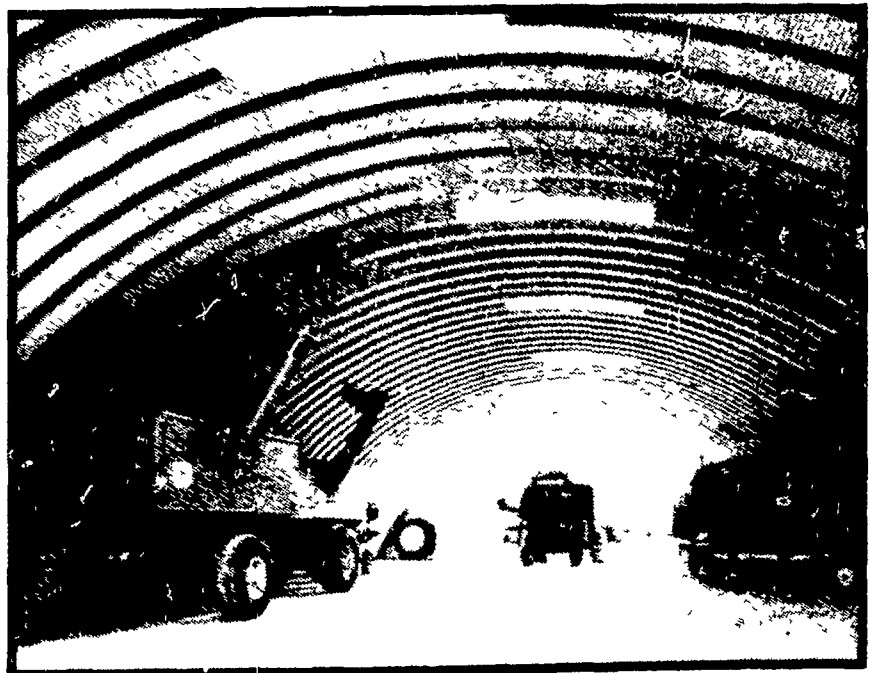
Shorts All weights 59.00-59.50.



## LAST WEEK FOR FAIR SPECIALS

Up to 15% Discount

## DON'T MISS THE BARGAINS



## MID-ATLANTIC STEEL BUILDINGS

RD1 Box 5, Christiana, PA 17509

(Lancaster County)

Ph: 215-593-5326

## MIRACLE SPAN STEEL BUILDINGS



## WHOLESALE & RETAIL

### ★ WINTER RYE

- Balboa or Tetra Petrus

### ★ CERT. BARLEY

- Rapidan, Barsoy & Maury

### ★ CERT. WHEAT

- Ruler, Logan, Hart, Redcoat, Arthur 71

### ★ BALER TWINE

DISTRIBUTOR FOR



**SCHLESSMAN'S SEED CORN**

Booking By Oct. 30 - Early Discount

NEW

**FERTILIZER FACILITY NOW IN OPERATION**

★ BULK or BAG ★

Truck Spreader and New Tylers Available  
CALL FOR QUOTES

**BOYD'S SEED CENTER**

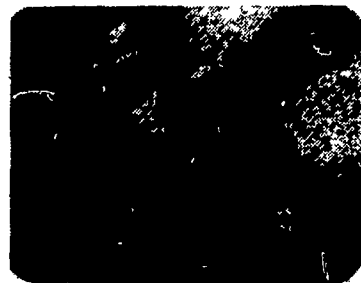
306 Iona Rd., Lebanon, Pa. 17042  
Phone: 717-272-8943

## TENDERFOOT™ ... The Ultimate in hog flooring for hog comfort.

- Self-Cleaning ... no holes or crevices to harbor bacteria.
- Superior traction prevents injuries and abrasions.
- Durable "Komfy-Kote" Construction.
- Cushioned Comfort reduces stress.



Here's why TENDERFOOT helps you keep more baby pigs alive and well:



• When placed over existing slats or on risers, sections of Tenderfoot make a self cleaning floor by providing smooth rounded openings for manure to pass through before it can build up, but without the danger of trapping a piglet's foot

• It gives pigs a toe hold so they can dig in to massage udders vigorously, and makes the sow more surefooted to avoid placing piglets in jeopardy. Her udder never touches a rough or cold surface, greatly reducing injuries and infection

COMPARE the advantages of Tenderfoot pads with concrete, metal and wood flooring.



• Since all edges and surfaces of Tenderfoot's expanded metal core are covered with plastisol, the floor is cushioned and insulated to help prevent sore knees and leg abrasions

— Call Today —

## BETTER-BILT AGRI DIST.

Ephrata, Pa. 17522

Edwin N. Kurtz, prop.

717-733-8193