

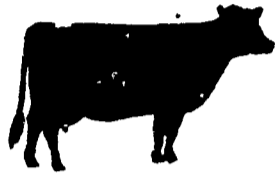
Lancaster Co. DHIA

(Continued from Page 95)

Faye	RH	6-3	305	18,050	3.7	675
Rose	RH	3-0	305	17,721	3.8	673
John O. Stoltzfus						
Roda	RH	4-10	305	21,014	3.8	792
Hope	RH	4-11	305	15,957	4.3	682
Gerald Martin						
Starlet	RH	5-2	304	17,987	4.4	787
Tanya	RH	4-9	305	16,985	3.9	669
Albert E. Fry						
Giggle	RH	4-5	305	17,713	4.4	787
Chuckle	RH	5-6	305	17,355	4.0	688
John F. Stoltzfus						
Jewel	RH	3-6	305	20,789	3.8	785
John K. Peters						
Sally	RH	7-1	305	21,837	3.6	783
Melinda	RH	2-1	305	17,894	4.2	748
Ruby	GrH	3-1	305	19,047	3.8	721
Pat	RH	4-0	305	20,399	3.4	696
Earl L. Hershey						
249	RH	4-0	305	19,113	4.1	782
157	RH	10-5	305	19,807	3.7	723
Parke H. Ranck						
Pepper	RH	3-0	304	18,667	4.2	782
Meadow Vista Farm						
Dawn	RH	4-3	305	17,813	4.4	782
Ad	RH	6-1	305	22,808	3.4	773
Cutie	RH	6-2	299	19,235	3.8	738
Beth	RH	6-0	297	18,226	3.6	664
Shadytop Farm						
Joan	RH	8-5	305	20,675	3.8	779
Joseph C. Wivell						
Denise	RH	4-3	305	18,604	4.2	779
Freda	GrH	2-10	305	21,935	3.1	677
Cindy	RH	3-0	305	18,390	3.7	674
Ressler & Stoltzfus						
Joyce	RH	4-2	305	18,324	4.2	776
Victoria	RG	5-1	305	16,104	4.5	728
Neff Brothers						
Pet	RH	5-11	305	20,014	3.9	772
Andrew G. Miller						
Karen	RH	5-8	305	22,752	3.4	770
Fran	RH	4-1	305	20,643	3.4	707
Melvin L. Beiler						
Sputter	RH	6-3	305	18,953	4.1	768
Dally	RH	6-8	305	19,066	3.9	749
Earl S. Weaver						
Polly	RH	4-1	305	20,072	3.8	766
Glenn C. Hershey						
Tara	RH	5-7	305	21,841	3.5	765

Harold K. Witmer						
Pansy	RH	3-5	305	16,339	4.7	765
Joseph DeLong						
75D	GrH	5-8	305	15,476	4.9	761
65B	GrH	6-3	274	14,790	4.9	728
36C	GrH	4-4	305	17,321	4.1	711
John M. Weaver & Son						
1	GrH	6-2	305	18,452	4.1	759
39	GrH	4-1	305	16,421	4.5	745
159	GrH	5-11	292	18,691	3.9	731
28	GrH	3-7	305	17,659	4.0	708
70	GrH	3-7	289	18,279	3.8	687
Harry L. Troop						
Meg	RH	5-4	305	21,745	3.5	758
E. Richard Bruckhart						
Sunshine	RH	8-7	305	19,951	3.8	755
John U. Glick						
Ida	RH	7-5	305	20,115	3.7	754
Hiram S. Aungst						
Rae Ann	RH	6-10	305	17,136	4.4	754
Daffy	RH	2-2	305	15,519	4.7	728
Mindy	RH	3-7	305	15,556	4.3	669
C. Dale Bollinger						
Lucy	RH	3-8	305	20,681	3.6	753
Ira D. Welk & Sons						
Hazel	RH	5-6	305	18,959	4.0	753
James G. Kreider						
210	GrH	7-6	305	23,605	3.2	751
153	RH	3-1	305	18,158	3.7	679
77	RH	4-4	305	19,590	3.4	673
Edgefield Farms						
Dianne	RH	5-3	305	23,095	3.3	751
Reba	RH	4-8	305	20,725	3.6	747
Lori	RH	5-8	305	18,797	3.8	722
Faith	RH	4-6	305	20,980	3.2	678
David McMichael						
45	RH	7-1	300	22,937	3.3	751
Harold G. Shelly						
Lady	RH	6-2	305	20,403	3.7	751
Betsy	RH	4-10	305	19,489	3.5	690
Dede	RH	5-11	280	20,553	3.3	677
Girl	RH	5-7	276	18,774	3.5	665
Carl G. Troop						
Ann	RH	5-5	305	18,431	4.1	750
Prince	RH	5-7	305	21,293	3.4	734
Jennie	RH	9-8	305	17,552	4.0	696
Harvey W. Stoltzfus						
Dreamer	RH	4-11	305	16,592	4.5	748
Calvin D. Beiler						
Belle	RH	7-6	305	19,208	3.9	747
Ivan Z. Martin						
Flo	RH	10-11	305	18,307	4.1	747

(Turn to Page 97)



MEMO HAY, STRAW & EAR CORN SALE

EVERY MONDAY AT 11 A.M. EVERY WEDNESDAY 12:00 NOON

NEW HOLLAND SALES STABLES, INC.

Phone 717-354-4341

Lloyd H. Kreider, Auct.

SEALSTOR THE NEW BLUE

"I bought SEALSTOR because I got more for my money"

FOR HOG FEEDERS...

"We looked at both systems, and bought Sealstor. It has many plus features, at no extra cost.

When you're talking about sealed storage you're talking about a building crew. No structure is any better than the way it's built regardless of the name on it. The Sealstor crew does a good job of building."



V.A. Page Dike Feeders Inc. Dike Iowa

FOR BEEF FEEDERS

"Sealstor is the least expensive sealed storage there is for the man that wants to feed his own corn.

You can't help but take feed value out when you dry corn. When you harvest it wet, and have a Sealstor there's nothing to stop you until the structure is full."



Miller Mikkelsen Rt 4 Cedar Falls Iowa

FOR MEN WHO FEED BOTH....

"I looked at both sealed systems... I bought Sealstor because I got more for my money."



Joe Rash Unwin Iowa

FOR DAIRYMEN...

"The fiberglass roof makes a big difference... it insulates better than steel and we get more storage because the breather bags are up out of the way. The feed? Well, our test is up 2 points and we save half a day a week by not having to grind.



Harold Lenz Route 2 Beaver Dam Wisconsin

FOR YOU. Check out a Sealstor System before you get the checkbook out.

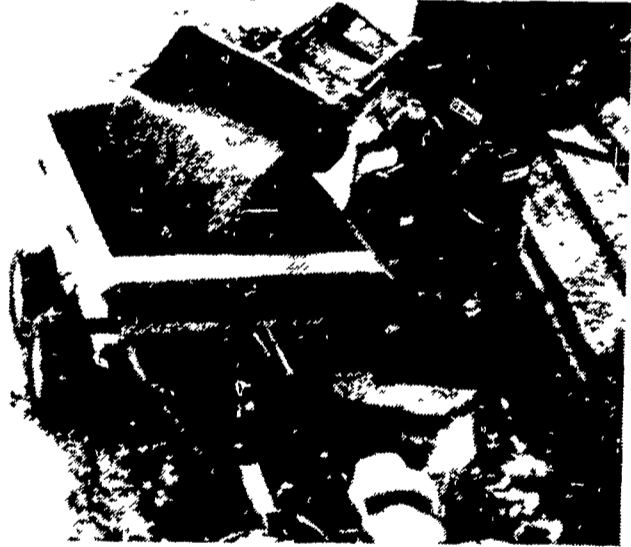


Clip and mail coupon to:
PENN-DUTCH FARM SYSTEMS, INC.
Box 8, 2753 Creek Hill Rd.
Leola, Pa. 17540
Ph: 717-656-2036

Sealstor and American Farm Systems are registered trademarks of American Farm Systems Inc. a division of Southwestern Porcelain Inc. Sand Springs Oklahoma

NAME _____
ADDRESS _____
CITY _____ STATE _____ ZIP _____
TELEPHONE (include area code) _____
of animals ON FEED HOG _____ BEEF _____ DAIRY _____
ACRES _____ MORE INFORMATION STUDENT

THE QUICK UNLOADER MARTIN SEMI-SOLID OR LIQUID SPREADER



Martin V. Model is the quick unloader for that sloppy manure problem - makes effective use of time - no need for stopping your lane or roadway. The best spreader for free-stall operations... semi-solid manure storage... even handles stored parlor waste... plus many other uses Topdress pasture, hay crops, etc. - no problem. Ask your Martin dealer today for his capacity/price ratio - a sure winner over many brands. Martin V. Model (pat. pend.) - the quick way to solve that tough manure problem with fast, fast unloading. Models available from 208 cubic feet to 440 cubic feet (level full).

THE FOLLOWING FEATURES ARE STANDARD EQUIPMENT ON MARTIN'S V1500 gal., V2100 gal., V2250 gal., V3300 gal. TANK SPREADERS.

- Heavy duty internal chopper type auger
- Includes Hydraulic cylinder and all hoses
- Includes PTO shaft, jack and ladder
- Spreaders built and designed to handle manure from free stall barn without adding any liquid
- Rear fan built to handle spread of 45 to 60 feet liquid or thick manure
- Manure tank can be filled with barn cleaner - Scrape off Ramp - Front End Loader or Pump
- Large 12' opening from tank to discharge fan
- Special V-Shape design facilitates smoother flow of manure removal
- Braking System Optional, 4-wheel Hydraulic Brakes controlled from tractor

CALL 717-933-4151
Martin Mfg. for liquid manure equipment - full line of free stalls, head locks, gates and other farm equipment.

