

LIVESTOCK & SUPPLIES

LIVESTOCK & SUPPLIES

DAIRY EQUIPMENT

DAIRY EQUIPMENT

Lancaster Farming, Saturday, September 23, 1978-75

DAIRY EQUIPMENT

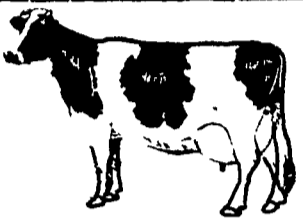
POULTRY & SUPPLIES

FOR SALE
40 Head of Good, Big, Highly Productive Registered Angus Cows
 (1100 - 1300 lbs.)



Colossal & Wye Breeding.
 Two to six years of age with or without 1978 spring calves
 All cows bred for spring calving in 1979.
TWIN OAK FARMS
 Fred Frey, Manager
 Quarryville, PA 17566
 717-786-2146 717-786-2201

HOLSTEIN HERD
25 Cows



Last year herd average was 14,000 milk & 4% test. Good young fall herd, 17 due between Sept. & Dec. Good Sires & artificial breeding. Can be seen anytime.
STONEHURST FARM DAIRY SALES
 Lime Valley Rd., Strasburg, Pa. 17579
 Ph: 717-687-7475 or 687-8319

For Sale - 455 gal. Sunset bulk tank \$800, 500 gal. Dari-Kool \$1150. Eves. 201-369-4784.

LIVESTOCK & SUPPLIES

YORKSHIRE SERVICE BOARDS

HOUVALE FARMS
 Elwood E. Houser
 R.D. 5 Box 70
 Lebanon, Pa. 17042
 Ph. 717-272-5798
 or 717-273-2921

FEEDER CATTLE

Will buy on order, truck to your farm or assemble for your trucker

Denzil Heishman
 Rt 1, Box 232B
 Strasburg, VA
 Ph (703) 465-5785

Shavings in trailer load lots.

\$225 per trailer load.

LEOLA SUPPLY COMPANY OF MARYLAND
 Box A
 Millington, MD 21651
 301-928-3061

For Sale - 8 used Bou-matic automatic teat cup detachers, model E BM25 complete with all mounting hardware, \$250 ea. Bakers 3 Inc. 814-766-3367 New Enterprise, Pa.

Surge pipeline, 1 1/2" wide, 175+ pump, 5 milking units, 500 gal. Zero milk tank. 717-898-2059.

For Sale - Surge pipeline for 60 cow stalls, 1 1/2 in. line, 4 breaker cups, 7000 gal. Esco tank, Copeland compressor. 717-253-3562.

For Sale - 28 Mostly Guernsey milk cows, most Summer & Fall freshening. 500 Gal. Milkkeeper milk tank, 3 Universal milkers. All in good condition; 717-755-8635, York Co., RD12.

For Sale - 18 DeLaval 200's complete with weigh jars, controls, pulsators, wash tub, claws, 2-78 pumps 5 H.P. motors, 1-76 pump 3 H.P., 1-water cooled Zero pump 10 H.P. 3 phase. Want to sell all to one buyer but will consider selling separate. The price will make you happy. 717-872-7190 evenings, 872-5461 day.

For Sale - One 6 can milk cooler in running order. Ph: 215-282-3616.

1000 gal. Girton bulk milk tank & compressor, new condition, \$4000. 327 New Idea narrow row corn picker, exc. condition, used very little, \$3000. 4 Grove hydraulic chuck wagons. Ph. 201-735-7654.

For Sale - 400 gal. Dari-Kool ice bank tank, good condition, holds 3500 lbs. Gideon F. Stoltzfus, RD 2, Gap, PA. Along Rt. 897.

For Sale - Twin Pak milk pouch filler, model D 4-2 complete with elevator and bagger, like new \$9,500, 1 York 30 hp. gas fired boiler \$500. 201-859-2616.

For Sale - 50 galvanized Jamesway lever stalls, good condition. Chester Hills Farm. Ph. 215-255-4359.

For Sale - DeLaval pipeline for 36 cows. Ph. after 6 P.M. 609-298-7104.

For Sale - 400 gal. Sunset Bulk tank with compressor \$950. Ph: 201-369-4784 evenings.

For Sale - 560 gallon Haverly Bulk Milk Tank. Price \$600. 717-729-7288.

1 used 500 gal. Dari-Kool Ice Bank tank with 4 h.p. compressor; 1 Surge pipeline milking system. 215-286-9026.

For Sale - 200 gal. Wilson Ice Bank milk tank. Robert A. Sigler, Jr., 7807 Picnic Woods Rd., Middletown, Md. 21769. 301-371-9105.

For Sale - 18 can stainless steel cooler, like new, carriage horse 7 yrs. old. Broke single and double, mans horse, Israel Stoltzfus, Kirkwood, Pa.

DeLaval 40 cow pipeline new pump, automatic washer, A-1, \$3200, Sunset 555 gal. buck tank \$1300. 201-369-4784 eves.

For Sale - Surge pipeline for 60 cow stalls, 1 1/2 in. line, 4 breaker cups, 7000 gal. Esco tank, Copeland compressor, 717-253-3562.

For Sale - 800 gal. Girton round bulk tank automatic washer and compressor, excellent condition, only used 5 mo. 717-263-5861 or 263-3696.

For Sale - Big Dutchman Champion automatic Chicken feeder, Model CH 3/4 h.p. approx. 1000' chain & trough with corners. Ph: 215-495-6726.

For Sale - Hy-Line yearling hens, anytime now till Sept. 14. Jonas L. Stoltzfus, N. Ronks Rd., Bird-in-Hand, PA.

"The Sign of Quality"



PHONE
 717-626-8561
 P. O. BOX 285
 LITITZ, PA 17543



DAIRY EQUIPMENT

Single Six side opening Surge milking parlor complete
 (2) Surge pipelines complete for approx 40 to 50 cows
 Late Bou-Matic Pipeline complete for approx. 40 cows
 DeLaval pipeline complete
USED VACUUM SUPPLIES

Surge 30
 Surge Alamo 75
 DeLaval 78
 DeLaval 75
 DeLaval 73
 Surge-SP11
 Surge-SP22
 Late model Zero vacuum pump
 Phone: 717-626-1151



SPERRY-NEW HOLLAND

OUR POLICY ON MACHINERY, PARTS & SERVICE
 • QUALITY FIRST • AT A FAIR PRICE



SEE US AT THE

FAIR

We'll Be At The
WEST LAMPETER FAIR
 With Machinery Specials!
 September 27, 28 & 29

USED EQUIPMENT

WAIVER OF FINANCE
TILL MARCH 1, 1979
ON MOST HAY AND FORAGE EQUIPMENT

DIRECT FACTORY REBATES
FROM \$300 to \$1800
ON PURCHASES OF ANY A.C. TRACTOR FROM 100 H.P. AND UP.

AUTHORIZED
SPERRY-NEW HOLLAND
 PARTS and SERVICE



S717 Harvester
 S717 Harvester w/717 R2
 880 R2 Corn Head
 741 Corn Head
 880N3 Corn Head
 741 Corn Head
 741 Corn Head
 717W Pick Up Head
 880W Pick Up Head
 727 w/Head
 38 John Deere Harvester w/2 Row Wide cornhead and Pickup Head
 Little Giant Corn Drag
 AC 480 Blower
 574 IH Tractor w/2250 Loader
 AC D-14 Tractor
 (2) CA Allis Chalmers Tractor
 516 NH Spreader
 NH 676 Spreader w/Hyd Endgate
 NH 791 Spreader w/Hyd Endgate

AC Disk Harrow
 AC Disk Harrow
 Ontario Grain Drill
 Bob Cat Loader
 #7 Forage Box w/#15 Running Gear
 #6 Forage Box
 Grove Forage Wagon w/#234 Running Gear
 1469 Haybine
 479 Haybine
 NH 469 Haybine
 John Deere Hay Tedder
 New Idea Side Delivery Rake
 IH Side Delivery Rake
 37 IH Engine Baler
 37 IH Engine Baler
 NH 273 Baler w/Thrower
 272 Baler
 269 Baler w/53A Thrower
 268 Baler w/53A Thrower
 269 Baler w/53 Thrower
 Brillion Cultpacker
 John Deere Cultpacker

SPECIAL
NEW HOLLAND 1495
SELF PROPELLED HAYBINE

STARLINE

SALES & SERVICE
PARTS & EQUIPMENT

L. H. BRUBAKER, INC.

350 Strasburg Pike, Lancaster, PA

Phone: 717-397-5179

CALL OUR FRIENDLY SALESMAN BOB GANTZ
 717-397-5179
 or 687-6002
 Or Call His Home 653-5020 anytime

FOR SALE

FARM BULK MILK PICK UP TRUCKS AND ROUTES.

REPLY

Box 366 M-66
 c/o Lancaster Farming,
 Lititz, PA
 17543

PREMIUM QUALITY CUSTOM-PAC ICE CREAM
 Large or Small volume
ELIZABETHTOWN CREAMERY CO., INC.

26 Orange St -- Office
 529 S. Market St. -- Plant
 Elizabethtown, Pa. 17022
 717-367 1389 Weekdays 'till 4:30

BULK MILK TANKS

1500 gallon Zero, 2 yrs. oid
 1000 gallon Girton, enclosed
 800 gallon Mueller
 600 gallon Girton
 600 gallon Milkkeeper
 500 gallon Girton
 500 gallon Mojonier

Excellent Condition

"SURGE COOLS FASTER"
DONALD UPPERMAN

"SURGE"

Rt. 3, Chambersburg, Pa.
 717-264-6007