



Pa. Dairy Princess to be named Sept. 27

HARRISBURG — This year 43 local dairy princesses representing 48 counties will be competing for the title of Pa. Dairy Princess. These young ladies have already been actively involved in promotional activities for milk and dairy products at the local level.

The Pennsylvania All-American Dairy Show will run September 25 to 29 at the Farm Show Complex in Harrisburg. The show features entries of six dairy cattle breeds in competition for over \$60,000 in premiums, and boasts three national shows.

The All-American, sponsored by the Penn-

sylvania Dairy and Allied Industries Association, in cooperation with the Pennsylvania Department of Agriculture and the Pennsylvania Farm Show Commission, has since its inception in 1964 attracted exhibitors of the best in dairy cattle from dairy breeders and farmers around the world.

Seen from left to right (first row) Marcia Smith-Blair County; Connie Aiken-Mercer County; Linda Witter-Franklin County; Cindy Ettien-Perry County; Susan Graham-Westmoreland County; Kathy Strock-Cumberland County; Diane Liro-Northampton County; Lisa Cooper-Butler County; Susan Powell-Huntingdon County; Lynn Taylor-Somerset County; (second row) Pamela Ferens-Fayette County; Joyce Stoltzfus-Lancaster County; Deborah Swift-Erie County; Robin Stevenson-Jefferson County; Debra Cassel-Dauphin County; Jean Bates-Wayne County; Connie McFeaters-Lebanon County; LouAnn Hoffman-Juniata County; Beverly Hershey-Chester County; Darlene Pease-Susquehanna County; Robin O'Neal-Bedford County; (third row) Teresa Wolfskill-Berks County; Kathy Foust-Bradford County; Susan

Smith-Clarion + Venango Counties; Sharon Ruth-Montgomery County; Penny Brocket-Mifflin County; June Beatty-Indiana County; Sandy Miller - 1977-78 Pennsylvania Dairy Princess; Carol Zepp-Adams County; Emily Hallowell-Bucks County; Sharon Farabaugh-Cambria County; Cindy Homan-Centre County; Darlene Snell-Sullivan County; (fourth row) Renee Shaffer-SUN Area; Nancy Kunz-Crawford County; LouAnn Hughes-Clearfield County; Patricia Greek-York County; Kim Teets-Beaver + Lawrence Counties; Lisa Miller-Washington County; Becky Paulhamus-Lycoming County; Karen Alcorn-Armstrong County; Darlene Johnson-Warren County; Penny Smith-Tioga County; and Bonnie Snyder-Schuylkill County.



A survey of women attending a meeting to protest "deceptive packaging" revealed: 15 per cent tinted their hair; 38 per cent wore wigs; 98 per cent applied lipstick; 22 per cent used false eyelashes; 98 per cent used nail polish, and 25 per cent used eye shadow. 100 per cent voted in favor of a resolution to condemn false packaging.

SPORTING CHOICE



For 20-mile-a-day comfort, sportsmen choose Red Wing Irish Setters

*Sizes 6-16

Widths AA-EEEE

*Not all sizes in all widths



BOOKS
SHOE SERVICE
107 E. STATE ST.
QUARRYVILLE, PA 17566
717-786-2795

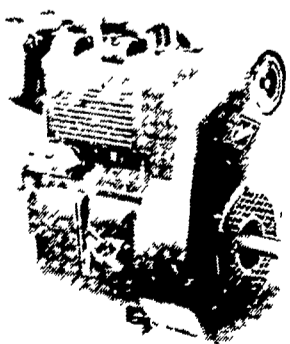
AVAILABLE NOW FOR FALL SEEDING

- + APOLLO ALFALFA
- + BUFFALO ALFALFA
- + VERNAL ALFALFA
- + WL318 ALFALFA
- + REDLAND CLOVER
- + CLIMAX TIMOTHY
- + TORO TIMOTHY
- + BARSOY BARLEY
- + ABE WHEAT
- + ARTHUR 71 WHEAT
- + REDCOAT WHEAT
- + CERTIFIED MAURY BARLEY

P. L. ROHRER & BRO., INC.

SMOKETOWN, PA

PH: 717-299-2571



USED DIESELS

LISTER

LD-1 3 1/2 HP
SR-2 12 HP

PETTER

PH-1 7 HP BA-1 10 HP
PJ-1 10 HP BA-2 20 HP
PJ-4 40 HP VM- 30 HP

LET US KNOW YOUR SERVICE PROBLEMS

HOOVER DIESEL SERVICE

Petter Diesels - Sales & Service
Ph. 717-656-6133

2998 West Newport Rd.

Ronks, Pa. 17572

ATTENTION GRAIN FARMERS

PLAIN & FANCY AG ENT., INC.

HAS INCREASED RECEIVING CAPACITY
AT ITS TAMAQUA OPERATION
UNLOAD TIME - 2500 bu. per hour
STORAGE CAPACITY - 200,000 bu.

YOUR BUSINESS
IS CORDIALLY INVITED

PLAIN & FANCY AG ENT., INC.

Box 106, R.D. #3

Tamaqua, PA 18252

PHONE - 717-386-4597