

Livestock market and auction news

Pa. Auction Summary

Of 17 Livestock Auction Market Reports
September 22, 1978

CATTLE 7338. Compared to 6311 last week, and 7501 a year ago. Compared with last week's market, slaughter steers & bullocks steady to \$1.00 lower. SL heifers unevenly steady to weak. SL cows steady to 50 cents lower, with latter part of week stronger. SL bulls steady to \$1.00 higher. High Choice and Prime sl. steers 55.00-57.75, Choice YG 52.00-56.75, Good 48.00-54.00, Standard 45.00-50.00, Choice sl. heifers 48.00-53.50, Good 45.00-50.00, Standard 41.00-47.00, few Utility 38.00-42.00, Utility & Commercial sl. cows 38.00-43.00, few to 45.00; Cutters 37.00-41.00, Canner & L. Cutter 33.00-38.00, Shells down to 28.00. Choice sl. bullocks 53.00-53.00, Good 48.00-51.00, few Standard 43.00-49.00. Yield Grade #1 1100-2000 lbs. 47.00-52.50, few Yield Grade #2 800-1700 lbs. 44.00-49.00.

FEEDER CATTLE: Good & Choice 300-750 lbs. steers 55.00-66.00, Good & Choice 300-650 lbs. heifers 45.00-55.00, Good & Choice 350-800 lbs. bulls 50.00-62.00.

CALVES 4468. Compared to 3897 last week and 4517 a year ago. Vealers strong to \$8.00 higher. Few Prime vealers 90.00-100.00, Choice 75.00-90.00, Good 68.00-80.00, Standard & Good 90-115 lbs. 60.00-74.00, 70-90 lbs. 55.00-68.00, Utility 55-100 lbs. 40.00-60.00.

FARM CALVES: Holstein bulls 90-120 lbs. 60.00-90.00, Holstein heifers 90-130 lbs. 70.00-115.00.

HOGS 7051. Compared to 5958 last week and 6264 a year ago. Barrows and gilts 50 cents to \$1.00 higher most advance latter part of week. US No. 1-2 200-250 lbs. barrows & gilts 50.50-53.00, few 54.00; No. 1-3 190-260 lbs. 49.00-52.00, No. 2-3 190-280 lbs. 48.00-50.00, few No. 1-3 140-190 lbs. 44.00-50.00. Sows: US No. 1-3 300-600 lbs. sows 40.00-45.00, few No. 2-3 400-650 lbs. 35.00-41.00. Boars: 33.00-40.00.

FEEDER PIGS 1719. Compared to 1010 last week and 1840 a year ago. Steady to weak. US No. 1-3 25-35 lbs. feeder pigs 18.00-37.00 per head, No. 1-3 35-50 lbs. 32.00-50.00, few No. 1-3 50-70 lbs. 48.00-57.00.

GRADED FEEDER PIGS 1507. All sales Cwt. Compared with 2604 head last week, and 1883 head a year ago. Feeder pigs strong to \$15.00 higher. US No. 1-2 30-40 lbs. 133.00-141.00, 40-50 lbs. 122.00-133.00, 50-60 lbs. 96.00-119.00; 60-85 lbs. 82.00-94.00; US No. 2-3 30-40 lbs. 136.00-140.00, 40-50 lbs. 100.00-115.00; 55-75 lbs. 81.00-101.00.

SHEEP 819. Compared to 718 last week and 631 a year ago. Spring or Woolled sl. lambs steady to \$4.00 higher. Choice 60-110 lbs. 58.00-65.00, few to 70.00, Good 55-100 lbs. 52.00-60.00. Slaughter ewes 12.00-30.00.

Market courtesy of PDA.

Lebanon Valley Auction

Fredericksburg, Pa.
September 19, 1978

CATTLE 245. Compared with last Tuesday's market,

slaughter steers strong to \$1 higher. Slaughter cows unevenly steady. High Choice & Prime 3-4 1100-1260 lbs. slaughter steers 56.10-56.85, Choice 2-4 975-1375 lbs. 53.25-56.00, Good 51.75-53.00, Standard 47.10-50.50, one at 51.50, few Utility 43.00-46.25. Few Choice slaughter heifers 49.00-53.25, Good 45.25-49.75, few Standard 43.00-45.00. Utility & Commercial slaughter cows 40.25-43.35, few to 45.00, Commercial 4-5, 39.25-41.60, one at 44.75, Cutters 37.00-41.60, Canner & Low Cutter 34.25-37.50, few Shells down to 32.00. Few Good slaughter bullocks 48.00-49.00, few Standard 45.25-48.00, one Utility at 41.25. Yield Grade No. 1 1415 and 1445 lbs. slaughter bulls 45.75 and 46.50, Yield Grade No. 2 1335 & 1965 lbs. 50.85 & 51.10.

CALVES 235. Vealers grading Standard and Good 70-120 lbs. mostly \$1-\$3 higher. One Prime vealer at 90.50, few Choice 85.50-92.00, Good 67.50-79.00, Standard and Good 90-120 lbs. 64.00-69.00, 70-90 lbs. 62.00-66.50, Utility 50-125 lbs. 32.00-53.00, few to 60.00. Farm calves active. Holstein bulls 90-120 lbs. 65.00-87.00; Holstein heifers 85-130 lbs. 71.50-110.00.

HOGS 387. Barrows and gilts uneven, mostly 50 cents lower. US No. 1-2 200-250 lbs. barrows and gilts 51.25-52.60, No. 1-3 195-245 lbs. 50.10-51.10, No. 2-3 195-275 lbs. 48.75-49.75, few No. 1-3 150-165 lbs. 44.50-44.75. US No. 1-3 sows 41.00-44.00, few to 45.25, No. 2-3 250-555 lbs. 33.25-40.75. Few Boars 37.50-38.50.

FEEDER PIGS 33. US No. 1-3 20-35 lbs. feeder pigs 101.00-103.00 per hundredweight, No. 1-3 35-55 lbs. 76.00-95.00 per hundredweight.

SHEEP 15. Choice 80-110 lbs. slaughter lambs 58.50-63.00, few Good 55-85 lbs. 53.00-58.00. One slaughter buck at 28.50.

Market courtesy of PDA.

Omaha Cattle

September 21, 1978

Compared with previous midweek: slaughter steers closed 25 to fully 50 higher, instances 75 up, heifers steady to 25 higher. Cows closed mostly steady, bulls steady.

Four day receipts 13,900 as compared 15,100 previous week and 14,600 a year ago. The price advance on slaughter steers was a rather forced affair on smaller receipts after Tuesday that more than recovered an early price decline. Demand was good for steers, only fair for heifers. Best demand centered on Choice 3 1150-1250 lbs. steers. Packers were generally caught between needing cattle but faced with a dull dressed trade. The run included a fair percentage Choice cattle with a moderate volume Choice and Prime. Steers made up approximately 33 per cent and heifers 31 per cent; cows 11 per cent and feeders 21 per cent of the week's total run.

STEERS: Choice 3 and Choice with end of Prime 3-4 1125-1250 lbs. 56.00-56.50, Five loads 1118-1226 lbs. at 56.50. Choice 2-4 1000-1300 lbs. 54.50-56.00. Forepart of

week, few loads 3-5 1300-1425 lbs. 52.50-54.75. Mixed Good and Choice 2-3 975-1250 lbs. closed 54.00-54.50, load 1496 lbs. Holsteins 51.00. Good 2-3 49.00-53.00, few Standard and Good 47.50-48.50.

Average of LS-214, detailed quotations, for Choice 900-1160 lbs. steers this week 54.72; Choice 1100-1300 lbs. 55.10. Average weight steers first three days 1132 lbs. as compared 1129 lbs. previous week. Average weight heifers first three days 973 lbs. as compared 982 lbs. previous week.

HEIFERS: Several loads Choice 3 and Choice and Prime 3-4 975-1050 lbs. 53.25-53.85, early one load Choice and Prime 3-4 952 lbs. 54.00. Choice 2-4 875-1050 lbs. 51.00-53.25. Mixed Good and Choice 2-3 850-1050 lbs. 49.50-51.50. Good 46.00-49.00.

COWS: Utility and Commercial 2-4 39.00-41.50, few 42.00, some heiferettes 43.00-45.00. Cutter 37.50-39.50. Canner and low-Cutter 34.50-37.50.

BULLS: 1-2 1400-2000 lbs. 43.00-47.00, some 1 47.50-48.50.

FEEDERS: Choice fleshy steers 950-1125 lbs. 53.50-55.00.

Market courtesy of USDA.

St. Louis Cattle

National Stockyards
September 21, 1978

Receipts this week 7,000: week ago 7,800; year ago 8,100. As compared to the previous weeks close, slaughter steers firm to .50 higher. Slaughter heifers steady to .50 higher. Cows fully steady. Bulls firm to 1.00 higher. Slaughter supply mainly Choice 2-4 1000-1200 lbs. steers, around 30 per cent heifers and 15 per cent cows.

SLAUGHTER STEERS: Mixed Choice and Prime 2-4 1050-1250 lbs. 53.50-55.00, closing sales 53.50-54.00. Choice 2-4 950-1250 lbs. 52.00-54.25, Closing 52.00-53.50. Mixed Good and Choice 2-4 900-1225 lbs. 51.50-53.50. Good 2-3 900-1175 lbs. 48.50-52.00. Standard to Good 2-3 1050-1275 lbs. Holsteins 45.00-48.50.

SLAUGHTER HEIFER: Mixed Choice and Prime 2-4 875-1050 lbs. 50.50-52.00, closing week sales 50.50-51.00. Choice 2-4 800-1050 lbs. 48.50-51.00, closing 49.50-50.50. Mixed Good and Choice 2-3 700-975 lbs. 47.50-49.50. Good 2-3 700-950 lbs. 44.50-48.00.

COWS: Utility and Commercial 2-4 36.00-40.00. Boning Utility 1-2 40.00-41.00. Cutter 1-2 35.00-39.00. Canner and low Cutter 1-2 31.50-35.00.

BULLS: Yield grade 1-2 1050-1800 lbs. 42.00-47.50. Yield Grade 1 1450-1900 lbs. 48.00, individual 48.50.

FEEDERS: (Including around 1,700 at the regular Thursday auction.) Feeder steers and heifers steady. Supply mainly Choice and mixed Good and Choice 400-700 lbs. feeder steers and 400-600 lbs. feeder heifers:

FEEDER STEERS: Choice 350-500 lbs. 66.00-73.50; 500-700 lbs. 63.00-69.00; fleshy 700-900 lbs. 55.00-59.50. Mixed Good and Choice 400-600 lbs. 61.00-66.00. Good 400-600 lbs. 58.00-62.00. Package

Standard to Good 550 lbs. Holsteins 58.50.

FEEDER HEIFERS: Choice 350-500 lbs. 59.00-62.25; 500-700 lbs. 54.00-60.00. Mixed Good and Choice 350 500 lbs. 55.00-59.50; 500-600 lbs. 52.00-56.00. Good 400-600 lbs. 50.00-54.50.

REPLACEMENT COWS: Part load Mixed Good and Choice with calves at side 457.50 per pair.

Market courtesy of USDA.

Joliet Cattle

September 21, 1978

Friday through Wednesday's salable receipts

6,600, 5 days last week 5,882, same period last year 7,795. Trading slow for the week on steers. Heifers slow Monday, moderately active Wednesday. Slaughter steers steady to 50 lower than Wednesday of last week. Heifers 25 to 75 higher. Cows steady to 1.00 higher.

SLAUGHTER STEERS: Mixed High Choice and Prime 3-4 1150-1400 lbs. 55.25-56.00. Choice 2-4 1000-1250 lbs. 53.50-55.25. Mixed Good and Choice 2-3 1000-1200 lbs. 52.00-54.00. Package of Choice Holsteins 1450 lbs. 49.00 Monday.

SLAUGHTER HEIFERS: Mixed Choice and Prime 3-4 950-1050 lbs. 52.00-53.00 Monday; 52.50-53.00, 2 loads 53.50 Wednesday. Choice 2-4 900-1050 lbs. 50.50-52.00 Monday, 51.00-52.50 Wednesday. Mixed Good and Choice 2-3 800-1000 lbs. 49.00-50.50 Monday, 49.50-51.00 Wednesday.

COWS: Utility and Commercial 38.00-41.00. Market courtesy of USDA.

Largest Island
Four-fifths of Greenland the world's largest island is buried under an icecap that averages 1000 feet in depth

★ SAVE ★ SAVE ★ SAVE ★ SAVE

THIS COUPON WORTH

UP TO \$3,000⁰⁰

ON PURCHASE OF

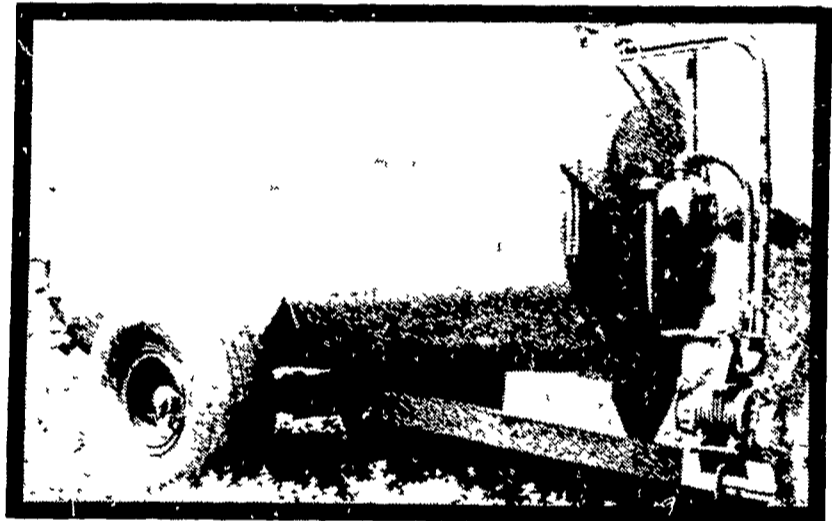
NEW BETTER-BILT SPREADERS

(No Trade In)

(In Stock Models Only)

“BETTER-BILT”

LIQUID MANURE HANDLING EQUIPMENT



VACUUM SPREADER

SAVE \$1590 ON A #1500 BETTER-BILT
SAVE \$1745 ON A #2100 BETTER-BILT
SAVE \$3000 ON A #3150 BETTER-BILT
SAVE \$2200 ON A #3150 BETTER-BILT
SAVE \$2000 ON A #2600 BETTER-BILT
SAVE \$1100 ON A #1100 BETTER-BILT

★ Limited Time For This Fantastic Once-In-A-Lifetime Sale.

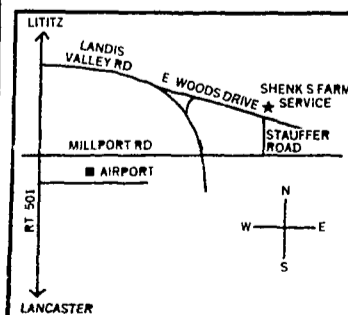
★ This Ad Will Not Be Run Again - Valid Sept. 24 to 30, 1978.

USED EQUIPMENT

3000 Gal. Huskey Spreader
1500 Gal. Calumet Spreader
1250 Gal. Huskey Spreader

USED PUMPS

Huskey Lagoon Pump
Better-Bilt Lagoon Pump



- PLANNING LAYOUTS
- SALES
- INSTALLATION
- SERVICE

SHENK'S FARM SERVICE

501 E. WOODS DRIVE LITITZ, PA. 17543 PHONE: 717-626-1151
After Business Hours Phone: Curtis Cassady 717-626-1065
Paul Repine 717-626-2837 or Mervin Nissley 717-872-4565
Our Service Trucks Are Radio Dispatched 24 Hr. Service Offered