

Berks County DHIA

(Continued from Page 126)

Donald M. Meyers					
Burda	H	5-5	305	19,919	768
Daview Farm					
Rhoda	H	7-2	305	21,723	773
Curly	H	6-5	305	19,092	723

PUBLIC SALE

OF VALUABLE REAL ESTATE
144 ACRE FARM
ON

THURSDAY, OCTOBER 5, 1978

AT 2:00 P.M. Sharp

At R.D. #1, Wrightsville, Penna. approx. 3/4 of a mile off Route 624, the Wrightsville-Long Level Road, located along Haughs Road in Hellam Twp. To be offered for the William B. Flora Estate, previously known as the Flora Orchard & Farm.

REAL ESTATE

Farm consisting of approx. 144 acres improved with a 2 1/2 story brick house with double living room with fireplace, dining room & kitchen on first floor, 4 bedrooms on second floor, heated by coal steam radiator heat, water supplied by well, farm also has a spring. Approx. 7/10 of a mile of good road frontage on both sides of Haughs Road. Majority of this farm is in woodland with some good timber. Lots of this ground was previously used for orchard & farming but would now need cleared for that purpose. This farm could be used in various ways, could be considered for development use. Farm is only 1 mile out of Wrightsville, Pa. and only a few miles from Route 30, zoned slope. There are 139 acres in Hellam Twp., balance of 5 acres & 60 perches located in Lower Windsor Twp. If on the market for acreage that offers privacy and other opportunities, be sure to inspect this real estate & attend this public sale. Will be open for inspection on Saturday, Sept. 23, 1 P.M. to 3 P.M. and Thursday, Sept. 28, 2 P.M. to 5 P.M. or by special appointment, phone 392-4131 or 252-3591. TERMS OF SALE: 10% down, balance on or before November 15, 1978. Other terms will be given at time of sale. Not responsible for accidents on day of sale.

Jacob A. Gilbert, Auctioneer
R.D. #1, Wrightsville, Pa.
Phone: 252-3591
Charles V. Snyder, Jr., Attorney
140 East King St., Lancaster, Pa.

TOMB FARM AUCTION

SATURDAY, SEPTEMBER 30, 1978

AT 1:00 P.M.

Located off Rt. 249 between Little Marsh & Middlebury Center, (watch for arrows at Shortsville church) Tioga Co., Pa.

CATTLE: Jersey family cow bred 7 mos.; Jersey hfrs bred & open; 4 10-15 mo. old Holstein hfrs (open); 1 Hol. stock bull. (TB & blood tested).

PIGS: 3 Reg. Duroc sows w/papers; 6 sows w/12-week litters; 3 90 lb. shoats. All sows bred back to Duroc boar. (blood tested).

PONIES: Team of driving ponies; 1 set of harness; single driving pony; 2 young ponies. (Coggins tested). 3 coon hounds w/pups.

PRODUCE: 1200 bales bright mixed hay (remove at buyer's convenience), 8 A. standing field corn.

MACHINERY: AC WD 45 w/loader; MF 65 D WF multipower - excellent rubber w/7' side mount mower; Int. "M" WF; old Case; MF 39 2-row corn planter 3 pth; '74 Ford 350 trk, V8, 4 spd., 9' stake body, good rubber; NH 469 haybine; NH 68 blaer; NH Skelton elev; NI rake/teeder; kicker wgn.; 2 flatbed wgn.; 12' cattle rack; JD 3-14" mounted trip plows; 2 JD harrows; NI pto spreader; 51 Ford "F6" w/16' flatbed (needs mtr.); 37 Chev. w/mechanical boom & wrecker boom;

MISC. ITEMS: JD heavy duty cylinder; 125 locust posts; 340 gal. bulk tank; Surge unit; stainless steel pails & strainers; 300 12" cinder blocks (used); 2 skid tanks w/pumps; 3 pony saddles; quantity old iron, etc.

NOTE: Sale will start with mach. 7:00 P.M. Sharp, A good sale to attend with something for everyone.

TERMS: Cash or good check.

Owners:

MR. & MRS. ALFRED TOMB

Ph: 717-376-4285

Sale Conducted by:
Robert M. Shaylor, Troy, Pa.
717-297-3278
Jerry Pirrung, Ulysses, Pa.
814-848-7421

Robert M. Shaylor Sales
515 Elmira St., Troy, Pa. - 717-297-3278
Reputable Sales Service
Licensed - Bonded

Richard R. Troutman					
Trudy	H	9-8	305	18,042	738
Harold G. Heck					
Polly	H	6-0	305	17,558	655
Marie	H	4-11	305	17,466	737
Elaine	H	3-9	305	19,263	686
Mervin Brubaker					
Linda19	H	7-8	305	18,263	789
Prncs39	H	2-11	305	17,003	678
J.D. Rosenbaum & Son					
81	H	6-2	305	16,870	655
Robert L. Sattazahn					
Beauty	H	6-1	305	17,240	705
Bridget	H	4-10	305	16,496	670
Horace Hoffman					
#34	H	6-7	305	16,273	658
Drey Bros.					
#55	H	4-11	305	21,321	772
Ray E. Bicksler					
Ruby	H	3-11	305	22,729	956
Frank G. Gromlich					
Alma 7	H	3-8	305	19,170	715
Robert Sittler					
Ginnie	H	4-11	305	20,319	730
Casper	H	5-5	305	17,866	701
Hylark Farm					
#176	H	3-3	305	18,689	708
Harold & George Schuler					
Jewel	H	4-0	305	17,490	677
Lora	H	3-11	304	18,926	705
Lucyrae	H	2-0	305	17,129	652
Junge Farms					
Opal	H	4-2	305	17,118	768
BRB Farm					
Melody	H	7-8	305	17,789	730
Robert T. Bowman					
Violet	H	5-0	305	23,504	897
Donna	H	5-0	298	16,541	753
Ken & Debra Dietrich					
Maude	H	4-9	269	20,357	779
O Dori	H	3-5	305	13,894	673

Ralph W. Horst Auctioneer
Eberly & Gossert. Clerks

DAIRY DISPERSAL

The undersigned quitting the dairy business will sell on the farm located 4 miles South of Shippensburg, Pa., 1 1/2 miles South of Exit 9 "Fayette St. Exit for Rte. 81", go south from Exit on Rte. 696, first road to left, watch for signs, farm is on corner of Woods and White Church roads.

THURSDAY, SEPTEMBER 28

Sale at 7:00 P.M.

30 HEAD OF GRADE HOLSTEIN COWS

Certified; Accredited; Tested. Herd consists of cows with size, type, good udders and good producers, some cows milking or will milk over 80 lbs. per day. Herd includes many young animals, first and second calf heifers, many sired artificially and includes 14 fresh since July, 13 due from sale until Jan., also three springing heifers. If in need of cows don't miss this sale.

ALSO SELLING - 1970 Chev. 1/2 ton truck, one owner, 32,000 miles; 1966 GMC one ton truck with racks; green chop wagon with 10 ton chassis, flotation tires; Hawkbilt spreader.

Terms - Cash.

Refreshments

JOHN M. & EDNA M. WADEL

R 4, Shippensburg, Pa.

Phone: 717-532-4223

ABSOLUTE AUCTION

at 2223 CONCORD PIKE, FAIRFAX SHOPPING CENTER, (Formerly Known as FOOD-RITE), Rt. 202, Wilmington, Delaware. (Opposite Rollins Office Bldg.)

WEDNESDAY, OCTOBER 4

At 1:00 P.M.

Food Super Market equipment of 14,700 square feet store... (7) National cash registers (2) drawers, (7) check out counters w/rolling tops, Hill open top freezers & shelf freezers, dairy refrigerators, delicatessen refrigerator show cases, S.S. sinks, Dayton & Hobart scales, S.S. rotisserie, S.S. ice chest, ice fish display case.. large amount of adjustable shelving (in sections), Toledo value print, automatic meat wrapper w/Toledo scale & valuematic #2, Biro model 33 meat band saw, Hobart meat patty machine, large Hobart meat grinder, (5) meat blocks, (22) pallet type carts w/jack handles, (2) walk-in freezers, (4) walk-in coolers, many compressors, platform scale, meat track scale, roller conveyors, 36' refrig. produce case, sealer wrapper, S.S. work tables, Toledo & Globe slicers, Hill meat cases w/shelf, (50) shopping carts... etc.

BAKERY: Middleby - Marshall 7 pan rotating oven, proof box, refrig. work table, bread slicer, (2) Lowboy full pan show cases, refrig. show case, etc...

INSPECTION: From 9:00 A.M. Morning of Sale.

TERMS: Cash or Guaranteed Funds.

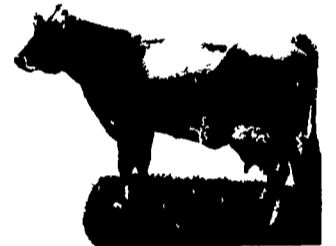
RUDNICK & MATAS, Auctioneers
(302) 658-7264

Lancaster Farming, Saturday, September 23, 1978-127

John C. Bartsch					
42 Edith	H	4-1	305	17,675	662
20 Vicky	H	3-1	305	18,733	721
Glen Mar Farm					
Chain 32	H	4-1	284	19,207	769
#85	H	5-3	305	19,906	871
#14	H	5-4	305	21,031	746
Norman Z. Nolt					
Flossy	H	2-10	305	18,708	671
Retland Farm					
#7	H	5-10	305	17,342	660
#27	H	6-11	305	18,664	707
#29	H	5-0	305	20,076	715
#42	H	2-11	305	17,998	670
#36	H	2-8	305	22,689	781
Thomas Wisser					
Becky	H	7-9	305	19,580	721
George Brubaker Jr.					
#34	H	4-10	305	18,181	686
#20	H	3-7	305	16,507	683
David Y. Knauer					
Janet	H	9-5	305	19,696	783
Adin Oberholtzer					
Irene	H	6-7	273	18,001	882
Beth	H	7-6	305	17,965	696
Cloe	H	7-3	305	16,270	662
Carol	H	4-11	305	19,847	744
Princes	H	4-10	305	16,747	686
Mae	H	4-2	305	17,588	673
Keith E. Hertzog					
Jelly	H	4-2	305	19,249	774
Faye	H	5-1	305	17,382	653
George E. Seidel					
Reba	H	3-4	305	17,121	685
George E. Seidel					
C Clara	H	8-10	305	20,688	900
Connie	H	5-9	305	24,102	818
Missy	H	4-1	305	20,056	723
Clarence C. Sattazahn					
61 Jenny	H	7-10	305	18,528	701
S Saly	H	7-7	305	18,656	782
George S. Troutman Jr.					
Gina	H	5-5	305	21,677	730
Lucinda	H	5-6	295	21,953	907
Yost Brothers					
Fujjama	H	5-2	305	20,561	733
Greta	H	4-3	305	15,759	685
#119	H	3-11	301	18,268	724

PA ALL AMERICAN

BROWN SWISS SALE



MONDAY, SEPTEMBER 25

7:00 P.M.

Held at the Harrisburg Farm Show Building, small arena.

Animals of all ages for every breeders need. A Great opportunity to buy project calves. 3 Baby calves, 4 junior calves, 9 senior heifers, 4 junior yearlings, 7 senior yearlings, 11 2-yr. olds, 7 3-yr. olds, 4 4-yr. & older. 19 head due around sale time.

Semen - Design, Beauician, Laddie G, Padanne, Citation, Delegate, Nobleman S, and El-Brite.

For Catalog Write:

MRS. J. ROHRER WITMER

1402 Eshelman Mill Rd.

Willow Street, PA 17584

or call 717-464-2628

PUBLIC AUCTION

CARRIAGES, MUSIC BOXES,
ANTIQUES

FRIDAY, OCTOBER 6

At 6:00 P.M.

In Kempton Community Center Bldg. in Kempton, Berks Co., PA. Just off Rt. 737, 15 miles North of Kutztown.

2 seat surrey w/fringe top by Studebaker; 2 seat auto top surrey; H.H. Keath 1 horse buggy on rubber; 2 seat 1 horse sleigh; dbl & single work harness; carriage lamps & lanterns; shaft & strap bells; set 4 good buggy whls; lg. collection of period antique clothing, 1 1/2" REGINA music Box; 3 lg. cyl. type music boxes; CELESTINA & GEM roller organs; early 1 & 2 turn music boxes; ornate cast iron & nickel kit wood stove; Victorian loveseats; rd oak table & chairs; spinning wheels; high poster rope bed. Clocks, glassware, old bottles, prints, dolls. Contact Auction Co. for illus. Flyer w/full listing.

Sale held for

PETER FRITSCH

Conducted by Ralph W. Zettlemoyer Auction Co.
R1, Breinigsville
(215) 285-4616