

Berks County DHIA

(Continued from Page 10 7)

Rodger L. Wagner					
Ember	H	10-0	305	18,654	747
#38	H	6-6	305	18,841	677
#129	H	5-8	305	21,201	783
#163	H	4-1	305	18,582	650
Linden Loch Holstein					
#85	H	4-8	305	23,201	682
Wilmer Dreibelbis					
Hilda	H	4-9	305	17,920	654
Donald B. Duncan					
#47	H	3-7	305	19,807	750
#35	H	2-2	305	16,613	669
Ernest E. Heckman					
Flossie	H	6-0	305	16,155	709
Bessie	H	5-5	305	16,272	652
Herb Top Farms					
Tola	H	6-0	297	16,416	758
Mertz Brothers					
Frieda	H	8-8	305	20,794	707
Marie	H	7-8	305	24,259	955
Ray W. Seidel					
Dynamit	H	5-10	305	17,827	678
Telstar	H	4-0	305	15,488	651

Robert Yanos					
Dauntis	H	8-8	305	17,097	675
Isobel	H	4-4	305	13,872	693
Esther	H	4-1	305	19,006	685
William G. Howerter					
Betsy	H	4-5	305	17,687	705
Kristin	H	4-8	305	21,668	760
Fern	H	3-6	299	15,843	665
Donna	H	3-3	305	17,787	661
James G. Stutzman					
Nell	H	9-9	305	20,260	728
Kens	H	4-11	305	18,268	850
Magnola	H	3-2	305	17,183	683
Swatara Dairy Farm					
#4	H	3-0	305	17,951	759
Charles D. Moyer					
Pnydra12	H	7-1	298	20,765	711
Glads14	H	6-11	305	19,893	824
Marie63	H	3-11	289	19,299	787
Kenneth L. Stutzman					
Bobbi	H	4-6	305	22,732	972
Becky	H	2-9	305	18,252	656
John H. Stump					
Lady	H	7-6	305	19,199	718
Sheila	H	3-2	305	18,419	721
F. M. Browns Sons Inc.					
#93	H	5-1	305	21,172	678
#81	H	2-1	305	20,714	736

(Turn to Page 127)

HARRY RUDNICK & SONS, INC.
Galena, Md.

Phones 648-5100 or 648-5179

FALL EQUIPMENT AUCTION

MONDAY, OCTOBER 9

At Noon at Galena

We are accepting machinery consignments for our fall sale.

TRACTORS * COMBINES * PLOWS *
DISCS * PLANTERS * DRILLS *
SEEDERS * WAGONS * CHOPPERS *
ELEVATORS * BALERS * CULTIVATORS *
SPRAYERS * MOWERS * TRUCKS *
PICKUPS * CONSTRUCTION &
EXCAVATING EQUIPMENT

This will be a large Consignment Sale with buyers coming from many different States. Please call in advance for full advertising.

Joe Rudnick, Auctioneer

EVENING DAIRY SALE

FRIDAY EVE., SEPT. 29

7:30 P.M.

Sale being held at the Art Kling Sale Barn, 12 miles North of Carlisle, 2½ miles N.E. of Landisburg, Perry County, on Route 74:

60 HEAD 60

Registered and Grade Holstein Cows & Heifers

FEATURING:

25 FIRST CALF HEIFERS

Nearly All Fresh or Very Close by Sale Date.

LOAD OF PUREBRED CANADIANS

All First and Second Calf Heifers.

SEVERAL TOP PUREBREDS from Cortland Co., N.Y. DHIA Records.

"If you need milk, Don't miss this sale!"

Owner

V. ART KLING

R.D. 1, Landisburg, Pa.
(717) 789-3883

Naugle, Pedigrees
Glick, Auctioneer

REGISTERED HOLSTEIN SALE!

SPRING GARDEN DAIRY
COMPLETE HOLSTEIN DISPERSAL
MONDAY, OCTOBER 9, 1978

AT 12 NOON

Under tent mostly registered! For Sid Tilstra located on Spring Garden Rd. off Rt. 519, 3 mi. N. of Millford, N.J. 15 mi. S.E. of Easton, Pa.

MOSTLY REG. 58 HD SELL! 51 REG. - 5 ID GRADES
2 GRADES. FEATURING 9 REGISTERED
RORA ELEVATION DTRS. 5 BRED - 4 OPEN

29 Milking age - 18 bred heifers - 11 open heifers! DHIA herd ave. 14,049M 513F. 30 hd. due from Sept. thru Feb. mostly NEBA Bred-Sires Rep. on Reg. cattle = 9 by Elevation, 4 by Transmitter, Royal Master, Ivanhoe Star, Merry King, Lucky, Kate and others. Service Sires Rep. = Jet Stream, Job, Fury Ivan, and others. Semen Tank and Semen = 1-Elevation, 1-Ivanhoe Star, 4-Majority, Jet Stream and others.

The following are all Reg. cattle selling = VG Bellringer grand dtr w/22,277M 733F, GP Transmitter w/24,332M 630F, GP Ned w/17,416M and her 2 Elevation dtrs., A Superb w/19,000M and her 2 Elevation and Ivanhoe Star dtrs., A Elevation out of a 17,041# London Dtr., A Elevation out of a VG Kate dtr., A Elevation out of a GP 16,929 Kingpin grand dtr.

Attention = a top show prospect, an Elevation due Dec. out of a 18,363# GP Royal Master! This sale offers tremendous opportunity!

TB & Blood Tested, eligible for immediate interstate shipment! Examined for Pregnancy! 600 gal. Graft Bulk Tank, Surge dumping station, 3 Surge milkers and Surge milk pump!

Terms Cash or Good check with I.D. full settlement sale day! Lunch available! Catalogs!

Owner:

SID TILSTRA

201-995-2614 after 7 p.m.

Sales Manager & Auctioneer

COL. FRED R. DANIEL AUCTIONEERS INC.

Neshanic Sta., N.J. 08853

201-369-4784

PUBLIC SALE

J. Robert Meyers..... Auctioneer
Smith & Alleman..... Clerks

ANTIQUES AND
PERSONAL PROPERTY

The Estate of R. Wilmer Pearl

LONG TIME COLLECTOR OF CLOCKS,

MUSIC BOXES AND AUTOMOBILES

WIDOWER OF MILDRED H. PEARL

LONG TIME ANTIQUE DEALER

At Halfway, Md. will be held at the Lemaster Community Center, Lemaster, Pa. 18 miles Northwest of Hagerstown, Md. on

WEDNESDAY, SEPT. 27

9:00 A.M.

FURNITURE

One drawer walnut stand; tea wagon; two drawer stand; rope bed; blanket chest; altered washstand; two drawer blanket chest; Sheraton 2 drawer stand; Lane cedar chest; Victorian marble top 2 door stand; six oak chairs; oak extension table; maple table and four chairs; electric stoves; refrigerator; plank bottom chairs; chest drawers; stands; magazine racks; odd chairs; upholstered chair and ottoman; recliner; hda-bed; Coldspot air conditioner; Zenith T.V.; stands; chest of drawers; glider; porch chairs; kitchen cupboard; metal cabinets; Frigidaire washer and dryer; decon's bench; chair & ottoman; vinyl chair; G.E. sweeper; and items needed to furnish a household.

CLOCKS

Eli Terry & Son mantle clock; Steeple clock; two Cuckoo clocks; Anniversary dome clock; marble trim clock; Seth Thomas oak wall clock; kitchen clock; Seth Thomas Regulator clock; odd lot of clocks; clock parts.

MUSIC BOXES & RECORDS

Oak Edison phonograph; 2 roller organs; Gem roller organ; oak Victrola on record stand; small hand crank organ, broken; bellows organ, broken; Elena bellows organ, broken; Standard Model A phonograph, red horn; 2 Edison phonographs; phonograph with red horn; 25 phonographs, incomplete; 25 phonograph horns; portable record player; thousands of records of all descriptions; large disks round tube type and Edison; etc.

MISCELLANEOUS

20-brass steam engine whistles in all sizes; 7 brass auto horns; Claxton horn; tie gauges with auto label; exhaust whistle; 11 automobile robes, all excellent; candelabras; Tiffany type table lamp; art Nouveau hanging lamp; hanging oil lamp; brass and marble table lamp; copper table lamp; floor lamp; hanging cranberry hall lamp; chronometer, broken; flat irons; mirror reverse painting; pictures; mirrors; automobile and clock books; books; battery charger; metal pots; hand tools; garden tools; quilts; linens; pillows; blankets; bed spreads; misc. silverplate silverware; many radios; brass fireplace set; dishes; pots; pans and many unlisted items.

ANTIQUE AUTOMOBILES & ENGINE

1939 Ford 2S - 4189107

1956 Cadillac Sedan H845178

Economy gasoline engine.

These automobiles are in original excellent condition. Transfer made sale day.

AUCTIONEER'S NOTE: This is a close-out sale. Many items not listed. No order of sale, except automobiles will sell at 12 o'clock noon. This sale is managed by J. Robert Meyers and his staff, Amsley, Horsh, Miller, Horsh and Kuhn.

Terms - Cash

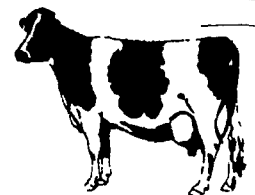
Nothing will leave without financial clearance.

Phone 717-264-2224

Special Representatives of the Estate

DAVID COTTINGHAM
& JOHN W. BURGER

WOOD'S AUCTION CALENDAR



WEIDMAN COMPLETE DISPERSAL

Located on Park Hill, 2 miles from Tioga, Pa., 6 miles from Lawrenceville, 14 miles from Wellsboro, 14 miles from Mansfield. Watch for auction arrows at the stop sign in Tioga.

SATURDAY, SEPTEMBER 30, 1978

AT 1:00 SHARP

33 — REG. AND HIGH GRADE HOLSTEINS — 33
1 REG. — 32 HI GRADES

Herd consists of 30 mature cows in all stages of lactation, 1 bred hfr, 2 yearlings. Interstate tested. Preg. ex. charts day of sale.

MACHINERY

AC D 17 tractor with loader; JD 620 tractor; AC WD tractor; F 350 Ford truck 1975; JD No. 12 chopper with corn and grass heads; Gehl self unloading wagon; Fox hopper blower with pipe and distributor; Ford 530 baler with kicker; Hesston PT 10 haybine; 2 Gehl wagons with kicker racks; DB hay elev.; JD 13 disk grain drill; JD 2 row corn planter; JD 34 spreader; Ford 3 bottom plow (new mulboards); Pittsburgh 12 ft. drags; Sunbeam clippers.

MILK HOUSE EQUIPMENT AND PRODUCE

550 gal. Solar bulk tank; dumping station with washer, dryer and hose; vacuum pump; 4 Surge milker units; 40 gal. gas hot water heater (3 mo. old); approx. 20 acres standing corn will be sold in 3 lots; approx. 4000 bales hay. Corn and hay may be seen on the James Holecek farm, Jackson Summit. For appointment - phone 717-537-2512.

TERMS: Cash or Good Check.

Sale Under Cover.

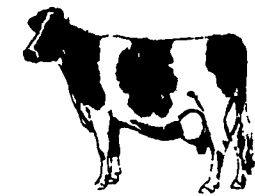
Lunch Available.

Owner:

DAVID WEIDMAN

Auctioneer - Arlow Kiehl

STICKLER COMPLETE DISPERSAL



Located off Rt. 328, five miles from Jackson Summit; 7 miles from Lawrenceville; 7 miles from Millerton; 17 miles from Elmira, N.Y. Watch for auction arrows off Rt. 328.

SATURDAY, OCTOBER 7, 1978

AT 12:00 NOON

56 — REGISTERED AND HIGH GRADE HOLSTEINS — 56
35 REGISTERED AND 21 HI-GRADES

36 mature cows, 2 bred heifers, 18 from calves to breeding age. JD 2640 diesel tractor with roll guard; JD B tractor; Lamco self unloading box with JD 8 ton running gear; JD 428; 40 ft. elevator with 2 hsp. motor; AC 66 combine; Gehl chopper with 1 row corn head; JD 135 semi-mount 4 bottom 16" plows; approx. 16 acres standing corn; approx. 6000 bales hay. Watch for full listing

Owner:

MICHAEL (Mike) STICKLER

Sales Mgr. - Gordon Wood
Mansfield, Pa. 717-549-4901

For the Most in Advertising Coverage and preparing your sale, call Wood's Auction Service.