

Eastern signs agreement to buy 8 million pounds milk per month

SYRACUSE, N.Y. — Peter Sandfort, president of Aldovin Dairy, Tunkhannock, Pa. and Arden Tewksbury, president of Eastern Milk Producers Cooperative, Syracuse, N.Y., jointly announced last week the recently signed long term agreement between Aldovin Dairy and Eastern Milk Producers

under which Eastern will purchase approximately 8 million pounds of milk monthly from Aldovin.

Tewksbury hailed the marketing program as, "a new era in cooperation between Eastern and Aldovin which will certainly help stabilize the entire Northeastern dairy industry".

Sandfort announced that Aldovin will no longer handle surplus milk at its Aldovin plant. However, the plant will continue to operate on a limited basis, producing cottage cheese and related products.

The farmers which supply Aldovin Dairy and the Canton and East Smithfield farmers can now be assured

of a long term market through this contract, according to Sandfort.

Howard McDonald, Eastern's general manager, stated, "This milk supply will complement the future

marketing strategy of Eastern and ready markets are currently available for it."

Eastern's treasurer, Max Lonstein, added that he

could see the arrangement resulting in improved efficiencies in Eastern's plant and hauling operations which would benefit all of Eastern's membership.

Open House

AKRON — Whitney Oldsmobile-Cadillac, Inc., and Whitney Leasing, Inc., will hold an open house Saturday, Sept. 23, beginning at 3 p.m. to celebrate the grand opening of its new sales and service facility located in Ephrata on the Oregon Pike at Route 772. Congressman Robert Walker will be one of many guests.

The public is invited to attend the open house from 3 to 7 p.m., and to view the 79 new Oldsmobiles and Cadillacs on display. Food and beverages will also be served.

HERD DISPERSAL

OF THE

ROY SPANGLER HERD

Held in RD 2 Wapwallopen, PA. Follow auction signs from Wapwallopen to Hobbe.

SATURDAY, OCTOBER 7, 1978

12:30 P.M.

**SELLING 35 HOLSTEIN CATTLE
28 MILK COWS, 7 HEIFERS.**

Sale managed by the

DANVILLE CATTLE CO.

Robert Shaylor Auctioneer

\$350 worth of Case options, or attachments

FREE

when you buy a new Case 43 to 80 pto tractor



Offer ends October 31, 1978.

RIGHT NOW
come on in

WAIVER OF FINANCE

ON 90 H.P. & OVER TRACTORS INCLUDING 4 WHEEL DRIVE TILL MARCH 1, 1979

- PARTS • SERVICE • RECONDITIONED TRACTORS
- CONVENIENT FINANCING • LEASING • RENTALS

DOING SOMETHING ABOUT IT

DEPENDABLE MOTOR CO.

East Main Street
Honey Brook, PA
(215) 273-3131

CLAIR J. MYERS

Lake Road R1
Thomasville, PA
(717) 259-0453

PEOPLES SALES & SERVICE

Oakland Mills, PA
(717) 463-2735

STOFFER BROS. INC.

1066 Lincoln Way West
Chambersburg, PA
(717) 263-8424

PAUL SHOVER'S INC.

35 East Willow St
Carlisle, PA
(717) 243-2686

NEVIN N. MYER & SONS, INC.

RD1, Chester Springs, PA
(215) 827-7414

C. H. WALTZ SONS, INC.

RD1, Cogan Station, PA
(717) 435-2921

C. H. RINEHIMER & SONS

RD 1, Berwick, PA
(717) 752-7131

T & T SUPPLY, INC.

RD5, Danville, PA
(717) 275-0927
2 mi S off Rte 54

BINKLEY & HURST BROS.

133 Rothsville Station Road
Lititz, PA
(717) 626-4705

E. W. BILEWICZ EQUIP., INC.

Elmer Rd., Richwood, NJ
(609) 881-2692

A. L. HERR & BRO.

312 Park Ave
Quarryville, PA
(717) 786-3521

ZIMMERMAN'S FARM SERVICE

Bethel, PA
(717) 933-4114

C. & P. FULTZ EQUIP.

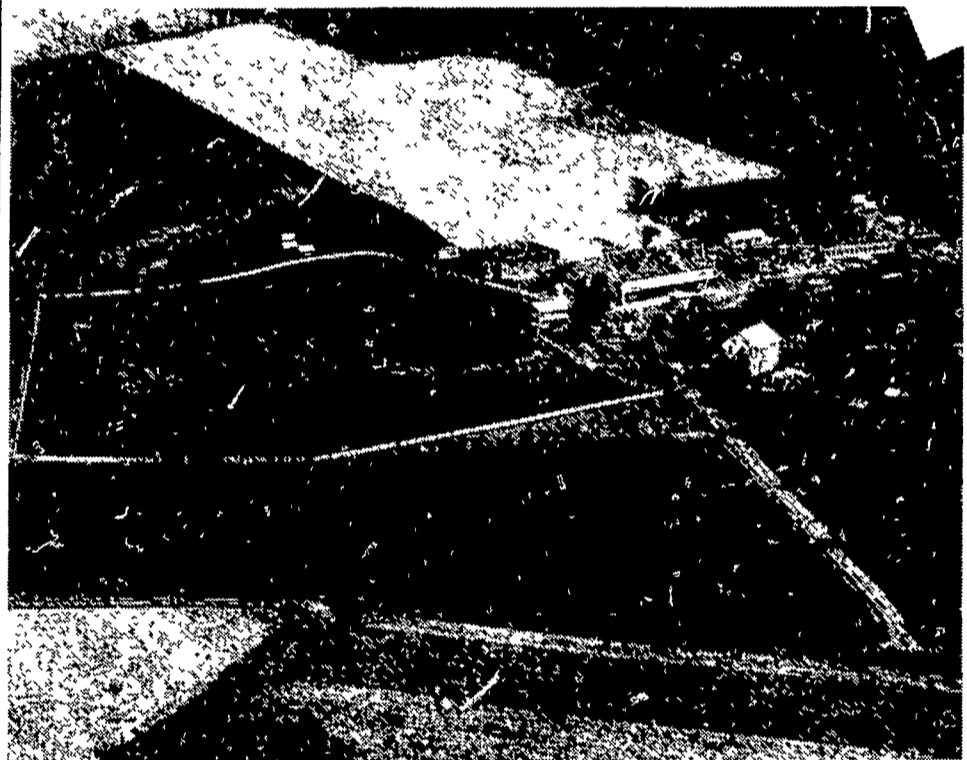
RD 1,
Spring Mills, PA
(814) 422-8805

EDWARDS FARM EQUIP.

291 West Moorestown Road
(Rt 512 Clearfield)
Nazareth, PA
(215) 759-0240

Henry K. Miller Estate
PUBLIC SALE
83 ACRE FARM, FARM EQUIPMENT,
HOUSEHOLD GOODS, ANTIQUES, ETC.
FRIDAY, OCTOBER 6 &
1:00 P.M.
SATURDAY, OCTOBER 7
9:30 A.M.

On the premises 1922 Quarry Road, approx. 3½ miles North of Lebanon, Swatara Township.



83 Acre farm with approx. 50 acres under cultivation, approx. 8 acres of woodland, balance in pasture with several springs on property. There is a 2½ story frame dwelling. 3 rooms, powder room & enclosed porch on first floor, 4 bedrooms & bath on second floor. Losh stoker hot water heat. Spring house attached to House. There is a bank barn, 40 x 40 equipment storage shed, corn crib, 2 car garage, numerous poultry houses.

Farmall H tractor, 2 cultpackers, harrow, disc, manure spreader, horse plow, Smoker bale elevator, 2 hole corn sheller, cylinder sheller, poultry equipment. 73 Chrysler Newport 4-door, 38,000 miles (loaded), 51 International truck with racks, 65 Chrysler 4-door (as is) Hay, etc. 2 Oval front china closets, marble top table, cane & plank bottom rockers, 5 leg extension table, large roll top desk, old cupboards, oak sideboard, 4 pc. dining room suite, ext. table, old couch, captain & other asst. chairs, Zenith colored TV, Frigidaire ref. w/freezer top, 30 in. electric stove, 2 single & 2 double metal beds, 2 Empire bureaus, 3 blanket chests, 2 old washstands, old footstools, wooden clothes tree, small chest, large oak wardrobe, folding cots, 4 plank bottom chairs (unusual), other asst. bedroom furniture (some early).

Old shelf clock, windmill music box, dough tray, coffee grinder, parlor hanging light, buggy lamp, old wooden tea & coffee boxes, tin ice cream dippers, nice old agate lunch box, tea kettle, butter prints, asst. baskets, small iron kettles, oil lamps, old patchwork quilts, arly bedspreads, one (Emmanuel Miley for C. Light 1840), 62 pc. Noritake China, Japanese tea set, decorated milk white, Nippon, blue & other asst. china, cups & saucers etc. asst. depression, pressed & pattern glass, castor set, carnival vases, gold edged white china pieces, souvenir pieces, asst. tinware, estate heatrola, asst small tables, B & H tiffany type lamp, Reverse on glass picture & others, modern poster bed, several old bowl & pitchers & more.

For inspection of real estate
call 717-949-3401 for appointment

Approx. 25 acres of standing corn will also be sold.
Fri. Oct. 6 - 1 P.M. Farm Equipment, Collectibles, etc.
Sat. Oct. 7 - 9:30 A.M. Antiques & Household Goods
2 P.M. Real Estate

HENRY ROYER & HENRY STEINER
Co. Administrators

Attorney - Henry Steiner
Auctioneers - Weik & Risser
Clerks - Zug & Heister

Lunch Available