

SEE **BINKLEY & HURST BROS.** FOR YOUR **GEHL AND CASE TRACTORS AND EQUIPMENT**

WAIVER OF FINANCE ON NEW GEHL EQUIPMENT TILL MARCH 1, 1979

- HARVESTERS WITH HEADERS
- FORAGE BOXES
- HIGH CAPACITY BLOWERS, 540 & 1000 RPM
- MOWER CONDITIONERS
- ROUND BALERS

Case 430 gas tractor, low profile w/3 pt. hitch, no PTO **\$985**

THIS WEEK'S NEW TRACTOR SPECIALS

WAIVER OF FINANCE TILL MARCH 1-79 ON ALL 90 H.P. AND OVER INCLUDING ALL 4 WHEEL DRIVE MODELS. OUR REBATE CASH PRICES ARE LISTED BELOW.

Case Model 885 43 HP diesel tractor w/quick attach loader installed	\$7,950
Case Model 990 53 HP diesel with Case Model 60 Series heavy duty loader installed	\$9,855
Case Model 995 58 HP diesel power adjust rear wheels	\$9,132
Case Model 1210 65 HP diesel power shift power adjust rear wheels	\$11,344
Case Model 1410 80 HP diesel power shift, power adjust wheels	\$12,687
Case Model 970 93 HP diesel power shift, no cab	\$14,800
Case Model 970 93 HP diesel power shift, w/4 post canopy	\$15,633
Case Model 970 93 HP diesel power shift w/cab, air, heater	\$18,172
Case Model 1070 108 HP diesel power shift, w/cab, air, heater	\$19,965
Case Model 1175 121 HP diesel w/cab, air, heater, demo	\$19,982
Case Model 1370 155 HP diesel w/cab, air, heater, 20 8x38 w 20 8x38 axle duals	\$25,896
Case Model 1570 180 HP diesel w/cab, air, heater	\$27,383

ASK ABOUT 2000 HOURS OR 2 YEAR WARRANTY ON ALL CASE TRACTORS

NEW REAR TRACTOR TIRES

TIRES IN STOCK — REAR TRACTOR

20.8x38 8 ply Armstrong	\$395
20.8x34 Goodyear Power Torque	\$365
18.4x38 6 ply Goodrich Silvertown	\$275
18.4x38 8 ply Armstrong	\$289
18.4x34 6 ply Armstrong	\$220
18.4x28 6 ply Goodyear	\$195
16.9x34 6 ply Goodyear Sure Grip	\$175
16.9x30 6 ply Firestone	\$150
16.9x30 6 ply Goodyear Deep Lug	\$150
16.9x38 6 ply Goodrich Power Grip	\$248
General Deep Lug, 8 ply, 15.5x38	\$185
1 only Goodyear Sure Grip, 6 ply, 14.9x38	\$185
Goodyear Power Torque, 6 ply, 14.9x28	\$162
Firestone Field & Road, 6 ply, 14 9x28	\$145
Goodyear Traction Torque, 6 ply, 13.6x38	\$145
Goodyear, 4 ply, 12.4x36	\$150
Firestone Field & Road, 6 ply, 12.4x28	\$115
Private Brand, 4 ply, 9.5x24	\$85

NEW WAGON TIRES

11L15 8 ply	\$35
12L15 8 ply	\$43
9.5L14 6 ply	\$39
11L16 6 ply	\$38
12L16 8 ply	\$43
10:00x15 8 ply	\$35

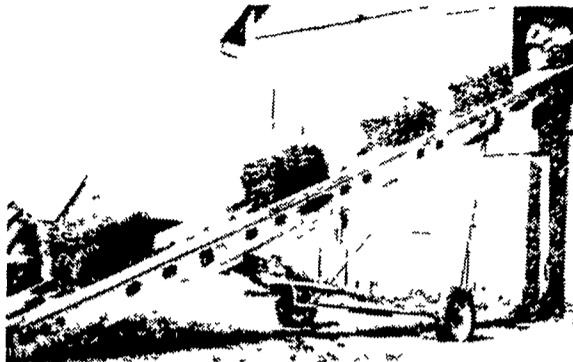
New Skid Loader Tires In Stock.

NEW FRONT TRACTOR TIRES

500x15 4 ply, Goodrich	\$19
650x16 6 ply, Goodrich	\$29
10:00x16 6 ply, Goodrich	\$58
9:5Lx15 6 ply, Armstrong	\$43
11Lx15 8 ply, McCreary	\$59
7:5x15 Goodrich	\$35

LOOKING FOR A POWER WASHER TO WASH YOUR EQUIPMENT?
CENTURY 500 P.S.I. POWER WASHER
IN STOCK - Regular Price **\$349.50**
10% OFF

HEAVY DUTY PORTABLE ELEVATORS BY SPEED KING



With Heavy duty No. 62 Chains & Shovel Hopper. Not Set Up.
Prices F.O.B. Dealers Lot.

31 FT. 36 FT. 41 FT.
\$1050 \$1145 \$1220

Bale Sides Available.
Buy your corn mover early and set up yourself and SAVE!

ELECTRIC MOTORS IN STOCK AT GOOD PRICES.



McCURDY GRAVITY BINS IN STOCK

★ AUGER ATTACHMENTS AVAILABLE

STANDARD GRAVITY BINS - F.O.B. OUR LOT
MODEL 275 MODEL 230 MODEL 195
\$445 \$395 \$365

Side Boards & Hydraulic Augers Available.

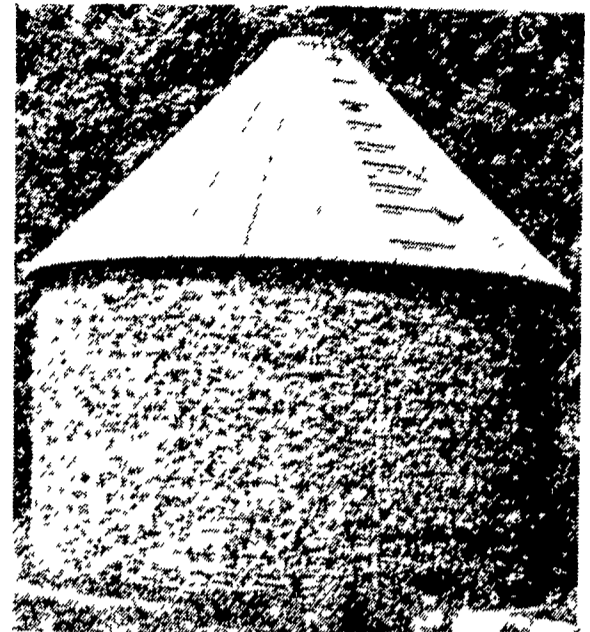
THESE UNITS IN STOCK, MOUNTED, READY TO GO.

McCurdy 195 bin on electric wheel 4-ton gear w/car tires **\$671**
McCurdy Model 230 bin mounted on 8-ton Gehl gear w/extendable hitch and 12' hydraulic auger installed **\$1439**

USED TRACTORS AND EQUIPMENT

Farmall C Tractor with front cultivator gangs and 3 pt. hitch	\$980
Case 6 bottom 16" Hydraulic Reset Plow	\$1,500
Case 4 bottom 16"	\$1,185
Case 1370 w/cab, air, heat, 400 hours	\$20,900
Gehl Model 115 Grinder Mixer with feed roll	\$2,400
Gehl 600 harvester w/electric knife sharpener w/2-row wide cornhead and heavy drive line	\$2,550
1816 Case unloader w/late model clutch	\$3,300
JD Model 110 riding tractor w/mower	\$685
Simplicity Model 3314H 14 hp. tractor w/mower & blade	\$1,085
Used heavy duty tagalong trailer with pintle hook	\$885
Used Oliver 4-row corn planter w/disk openers & Gandy insecticide attach.	\$985
Pittsburg 11 ft transport disk harrow w/scrapers, 20" blades	\$1,795
Case Model F21 12 ft. transport disk harrow - (1) New \$2,100 (1) Demo	\$1,900

MORIDGE GRAIN DRYERS
400 BUSHEL IN STOCK
OTHER SIZES AVAILABLE.



BEHLEN CORN CRIBS

Take Advantage Of Early Order Discounts.

- EL 10 MODEL - 1205 Bu.
- FXL 15 MODEL - 961 Bu.
- FL MODEL - 679 Bu.

DUNHAM 1100 BU. CORN CRIBS WITH RODS

Gehl 810 forage box, 6x16, w/3 beaters & roof on 10 ton Gehl gear w/11L tires **\$2,585**

NEW EQUIPMENT SPECIALS

Speed King 8"x60 ft. long transport auger with corn screens and covers, PTO drive, 3 ft. flex downspout, large Flex-I-Boot hopper, inlet control sleeve	\$1,995
Case 1816 B Uni-Loader with 44" wide bucket	\$4,500
New Gehl Model 630 Forage Box, 6x16, 3 beater with roof on Gehl 10 ton wagon w/11Lx15 tires & quick hitch	\$3,000
E-Z Flow Model 106 3 pt. fertilizer spreader w/agitator, 700 lb. capacity	\$395
Poly 200 gal. sprayer tank	\$139
Caldwell heavy duty 5 ft. 3 pt. hitch rotary cutter w/stump jumper	\$495
Pull type E-Z Flow hay rake w/steel teeth and jack stand, (same as New Idea)	\$1,235
Shaver post hole digger w/12" auger	\$385
Bush Hog Model 105 5 ft. rotary cutter w/stump jumper	\$489
(2) 3 pt. hitch rear scraper blades, 6 ft. 7 ft.	\$149.50 \$299
Dunham disk harrow 9'9" cut, 20" blades, transport model w/scrapers, 32 blades	\$1,595
Pittsburg transport disk harrow w/20" blades and scrapers 9'10" cut, 32 blades, 450 series	\$1,596
Pittsburg heavy duty model 460 series transport disk harrow, 10'3" cut w/22" blades	\$2,085
Pittsburg 3 pt. hitch spring harrow, 8' wide	\$335
Bush Hog Rebel 5 ft. rotary cutter	\$425

McCURDY GRAVITY BINS & RUNNING GEARS



BINKLEY & HURST BROS.

133 ROTHVILLE STATION ROAD
LITITZ, PA 17543 (717) 626-4705

