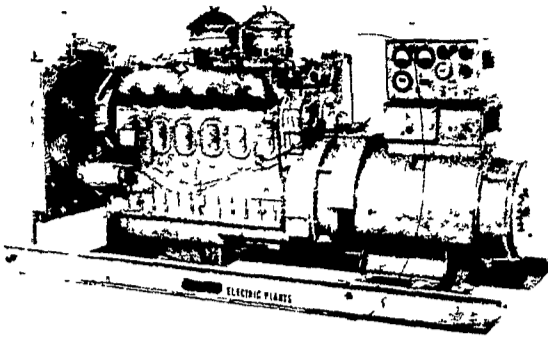


ELECTRIC GENERATING SYSTEMS

Built to Your Specifications
Manual or Automatic
L.P. Gas - Diesel - Gasoline



We Also Carry G.M. & Detroit Engine Parts.
Sales - Service

MARTIN ELECTRIC PLANTS

Isaac W. Martin, Owner
Pleasant Valley Rd., RD2
Ephrata, PA (717) 733-7968

Plant lovers' corner

Blackspot appearing on roses

MEDIA - The last two weeks of humid, rainy weather provided ideal conditions for the spread of a very common and destructive disease of roses - black spot. Already this season, the symptoms have been seen in far greater number than in previous years.

The first appearance of this disease is the black spots on the green foliage of all types of roses. Later, the leaves turn yellow and eventually drop-off.

It is important for one to pick-up these fallen leaves during the Summer and Fall so that the fungus has less material to overwinter on. In addition to picking up fallen, diseased leaves (which should not be put on the compost pile), it is necessary to apply a recommended fungicide (Benomyl or phaltan) at regular intervals of about seven to 10 days.

During periods of heavy rainfall, additional applications may be necessary to stop more rampant spread of this disease. A word for the wise for next year, advise experts, is for one to apply fungicides early in the season and then continue throughout the growing season, as recommended.

Lacebug control needed

MEDIA - Lacebugs attack many kinds of trees and shrubs. Among the most common are azalea, Pieris, rhododendron, hawthorn and London plane. Feeding by lacebugs on azaleas results in a grayish, stippled or blanced appearance to leaves. The injury is unsightly and plant vitality becomes greatly reduced.

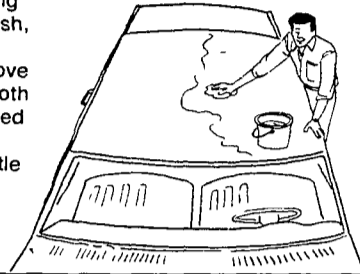
If one sees molasses-like spots of excrement on the lower leaf surfaces, he has a clue to lacebug activity, says experts. Insecticides commonly used for lacebug control are malathion, carbaryl (Sevin), dimethoate (Cygon or DeFend) and Diazinon. One should be sure to aim your sprayer at the lower leaf surface to get adequate control.

Auto Service Tips

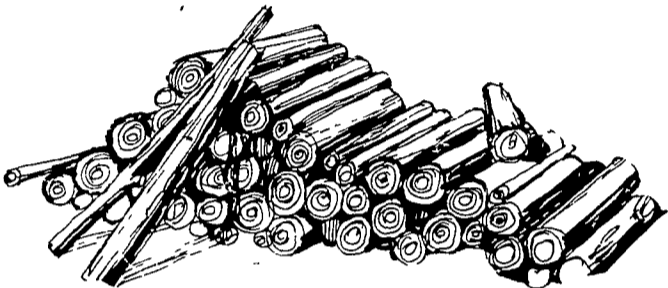
Vinyl tops will stay "new looking with proper care. Wash with mild soapsuds and lukewarm water. Using small, soft-bristle brush, scrub vinyl top in circular motion. Remove first soilage with a cloth so it will not be rubbed into the vinyl.

Washing, with a little commercial mildew remover will remove fungus.

Always follow cleaning with a quality vinyl top dressing.



**WE'RE CUTTING THE PRICES IN YOUR FAVOR!
DURING OUR SEPTEMBER
CHAIN SAW SALE**



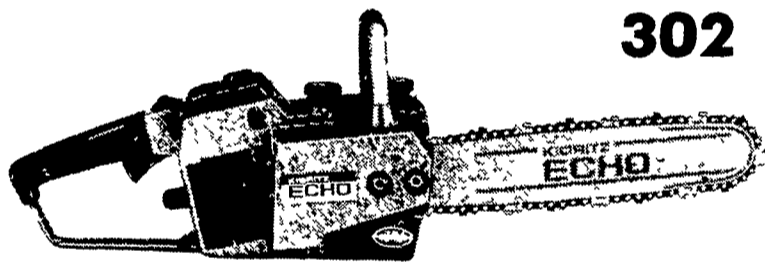
Sale Ends Sept. 30

ECHO

Comfortably designed for minimal vibration and safe, easy operation.

Precision engineered for fast starting and peak cutting efficiency.

Ruggedly constructed for durability and long life.



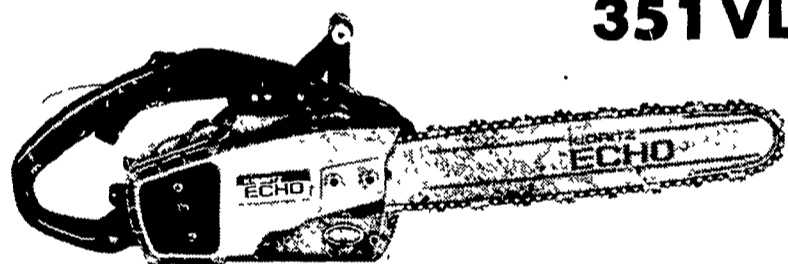
302

WITH 14" BAR AND CHAIN

Reg. \$169.95

A proven performer in the 30cc class with ball bearing construction for added durability and long life.

SALE \$135⁰⁰



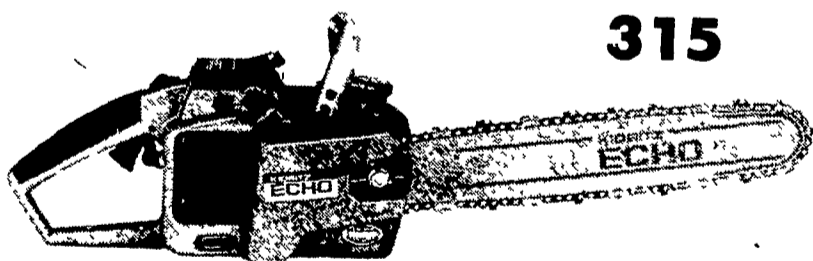
351 VL

WITH 16" BAR AND CHAIN

Reg. \$209.95

The deluxe 35cc light-weight with "Vibe-less," isolation-mounted engine and adjustable automatic oiling.

SALE \$175⁰⁰



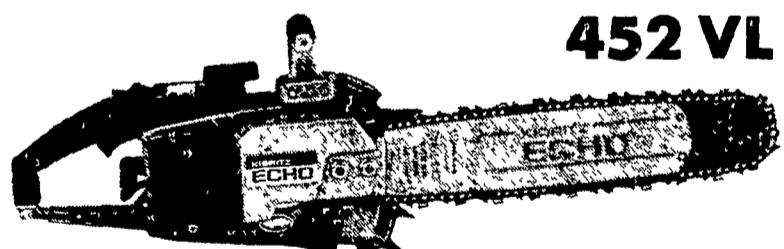
315

WITH 12" BAR AND CHAIN

Reg. \$129.95

The low-cost, yet durable 30cc light-weight with automatic oiling and easy-to-reach controls

SALE \$105⁰⁰



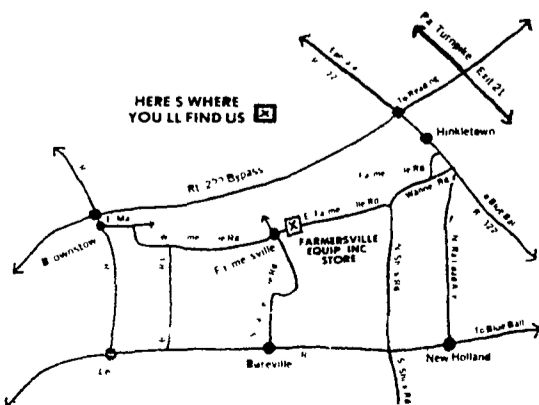
452 VL

WITH 16" BAR AND CHAIN

Reg. \$254.95

Powerful 45cc light-weight with broad high torque range, "Vibe-less" engine mounting system, automatic and manual oiling and external engine-idle adjustment.

SALE \$225⁰⁰



**FARMERSVILLE EQUIPMENT
INC.**

RD4, EPHRATA, PA.

717-354-4271

HOURS: MON., TUES., WED., FRI. - 7:30-5:30
THURSDAY TILL 9:00 P.M., SATURDAY TILL 3:00 P.M.