

## Ladies Have You Heard?

By Doris Thomas

Lancaster  
Home Economist



### ABOUT OLD FASHIONED GOODNESS

For the busy homemaker, having soup for a meal usually means opening a can. Condensed soups offer speed and convenience, but homemade soups can be just as convenient with a lot more to offer. When time permits, most cooks prefer a soup that starts with fresh ingredients that cook slowly, filling the kitchen with delectable aromas.

For all their goodness, homemade soups are a bargain, since they can be made from leftovers, with the cost per serving approximately half that of condensed soups. And, the variety is endless. Besides being economical, soup as a main dish is nutritious.

By preparing several batches at one time, the convenience of homemade soups is greatly enhanced. Save some for the following day, and freeze the rest. Then, soups can go from freezer to range to table with a minimum of preparation and cleanup.

Homemade goodness is really at its best when the foundation of soups is beef stock or broth. For those of you who like to experiment

in the kitchen, a pinch of this and a dab of that can lead to a perfect combination for creating unique soups. The secret is to add just enough of any one seasoning when using several. The mingling of lots of flavors, when done on a small scale, will produce the full-bodied flavor that makes homemade soups so special.

One way to make a good hearty main dish soup is in your electric blender or food processor. Begin with cooked meats and leftover vegetables. If a creamy soup is desired, add a little cooked potato, rice, or macaroni as a thickener with no further cooking required. Simply blend, heat, and serve.

Remember the importance of garnishes. That finishing touch should not be forgotten when serving soups. Try crumbled cheese, avocado slices, thin radish slices, thinly sliced celery rings, sauteed mushrooms, thinly sliced olive rings, crumbled hard-cooked egg, sour cream or grated cheese.

### TIPS TO MAKE FALL HOUSECLEANING A BREEZE

Are you planning to turn your house inside out this

Fall? Help speed up your cleaning by organizing Supplies and equipment - the key to faster completion of any job! Save steps by preparing a well-stocked carrying caddy of needed items for a given area. Use a basket or carton lined with soft towels to carry bric-a-brac to the sink for washing.

Have a double-sided pail or two separate pails, so both cleaning solution and rinse water are at the job site. An ample supply of sponges and cloths for washing, dusting, rinsing, and polishing is helpful. A sturdy stepstool or ladder is a must for reaching high places. Brooms, mops, scrub brushes, steel wool pads and pads for kneeling should be gathered together before beginning any cleanup project. Also include an old toothbrush, cotton swabs or pipe cleaners. They are invaluable aids in working lather into crevices and hard-to-reach areas.

Besides the necessary detergents, soaps, and cleansers, check your supply of polishes and waxes for floors, furniture, silver and other metals. Be sure to have on hand any special cleaners for tile, rug or toilet bowl. For safety's sake and best results, read labels on all cleaning products before using.

When your housecleaning is finished, store all supplies and equipment in a convenient place. There are numerous space savers available which can be attached to closet walls or doors to air storage of cleaning products and tools. Make a list of household cleaners which need to be replaced prior to future cleaning projects. Launder cloths and sponges. Wash, rinse and dry brooms, mops vacuums cleaner attachments, even the caddy, before storing.

Chickens under the American class: one of the recognized breeds is the Plymouth Rock, which has seven varieties: Barred, White, Buff, Silver-Penciled, Partridge, Columbian, and Blue. There are 12 other breeds in the American class, including the Delawares, established in 1952.

## Make a date with FORD'S SWEET 16



The Ford 1600 pulls two 14-inch plow bottoms. Discs. Mows. Digs postholes. Moves big loads between orchard or vineyard rows. Handles cleanup chores with ease.

You'll love the durable 23 PTO hp (26 maximum engine hp\*) two-cylinder diesel engine that offers outstanding fuel economy. There's a 3-point hitch to handle implements easily with hydraulic power and control. A 540 rpm PTO. And 9-speed transmission. Roll bar and seat belt are optional.

Differential lock, foot throttle and safety start are standard equipment

\*Per SAE formula 816b



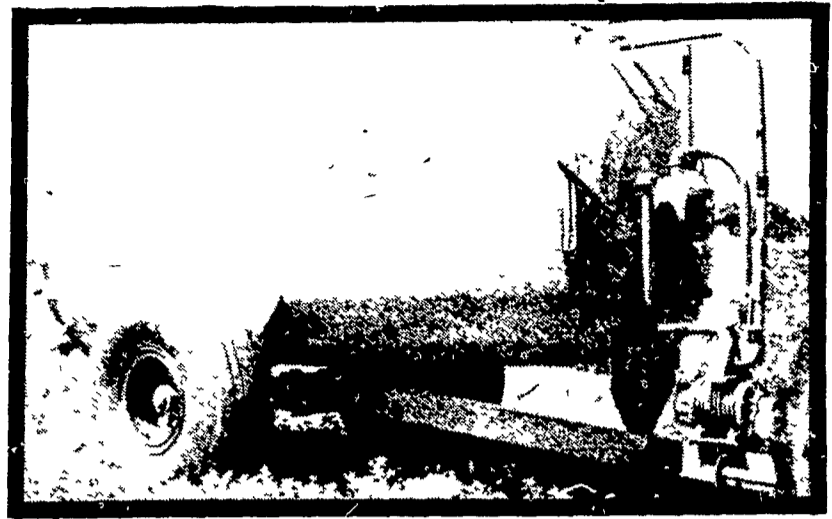
### ALLEN H. MATZ, INC.

505 E. Main St., New Holland  
Ph: 717-354-2214

SERVING THE COMMUNITY  
THIRTY YEARS  
LANC CO'S OLDEST FORD DEALER

## "BETTER-BILT"

LIQUID MANURE  
HANDLING EQUIPMENT



VACUUM SPREADER

TWO WHEEL  
TRAILER MODEL

TWO MODELS  
800 GPM OR 1200 GPM  
3-POINT HITCH MODEL



### HIGH PRESSURE PUMP

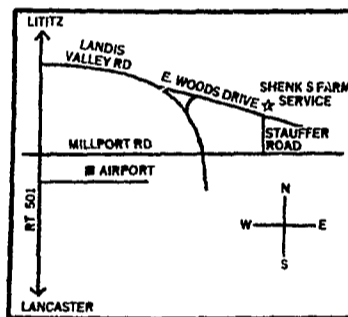
The "Better-Bilt" High Pressure Pump is designed for: pit agitation, transferring manure to above ground storage or to a lagoon, filling spreader tank and can be used in irrigation.

### USED EQUIPMENT

300 Gal. Hershey spreader  
1500 Gal. Calumet Spreader  
1250 Gal. Huskey Spreader

### USED PUMPS

Hershey Lagoon Pump  
Better-Bilt Lagoon Pump



- PLANNING LAYOUTS
- SALES
- INSTALLATION
- SERVICE

## SHENK'S FARM SERVICE

501 E. WOODS DRIVE LITITZ, PA. 17543 PHONE: 717-626-1151  
After Business Hours Phone: Curtis Cassady 717-626-1065  
Paul Repine 717-626-2837 or Mervin Nissley 717-872-4565  
Our Service Trucks Are Radio Dispatched 24 Hr. Service Offered

## ★ ALL STEEL STRUCTURES ★ AMERICAN FARM BUILDINGS WORK!

START THINKING ABOUT BUILDING TIME NOW!

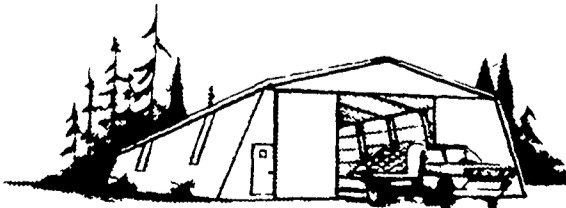
AMERICAN FOR VARIETY! ECONOMY! APPEARANCE!

Proven by many thousands of American Structures in use today

WHATEVER THE JOB: THERE IS AN AMERICAN FARM BUILDING DESIGNED TO DO IT! THESE RUGGED ALL-STEEL STRUCTURES ARE COMPUTER DESIGNED, FACTORY PRE-ENGINEERED AND FABRICATED FOR QUICK, ACCURATE, TIGHT-FIT ERECTION: USE COLOR-COATED MAINTENANCE-FREE MATERIALS, AND RIGID-FRAME SYSTEMS FOR WIDE SPAN, COLUMN-FREE FLOOR SPACE. AMERICAN BUILDINGS WORK!

NO ROT • NO TERMITES • NO STRUCTURAL EXPANSION/CONTRACTION PROBLEMS  
LOW ORIGINAL COST • LOW ERECTION COST • COST FREE MAINTENANCE

SMALL BUILDINGS TO HUGE WAREHOUSES



DOZENS OF BUILDINGS FROM BASIC PLANS  
BUILDING EXPANSION UNITS • MANY OPTIONS  
VERTICAL WALLS • SLANT WALLS • OPEN SIDE

McLean Construction is Bucks County's American Building Dealer!

More Information Please \_\_\_\_\_  
Plan to build within a few months \_\_\_\_\_  
Plan to build in the future \_\_\_\_\_  
Telephone for appointment \_\_\_\_\_  
The best day & time \_\_\_\_\_

Name \_\_\_\_\_  
Address \_\_\_\_\_ City \_\_\_\_\_  
State \_\_\_\_\_ Zip \_\_\_\_\_ Telephone \_\_\_\_\_