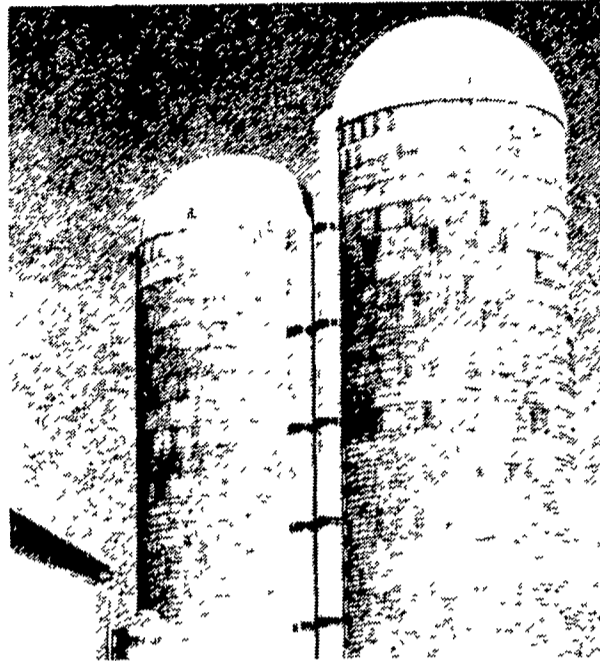




TERRE HILL SILO CO. INC.
 TERRE HILL, PA. 17581

**MANUFACTURERS
 AND
 ERECTORS OF
 TERRE HILL
 TRI-RIB
 STAVE
 SILOS**

Serving the
 Farm Community
 For Over
 One-Half Century.



FOR OLD FASHIONED PRIDE OF WORKMANSHIP
 ★ **SEE AND COMPARE**
THE PROVEN INTERIOR SILO FINISHES.

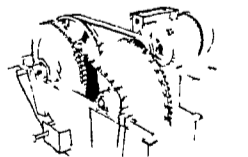
introducing
 the all new
PATZ
 slurry manure pump

The Patz Mechanical Manure Pump is designed to handle manure ranging from semi-solid to free-flowing slurry

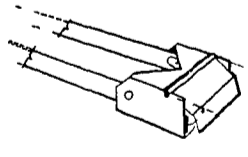


The Patz Slurry Manure Pump provides the ultimate solution to the moving of slurry liquid manure from dairy, beef, hogs or poultry installations to manure storage facilities

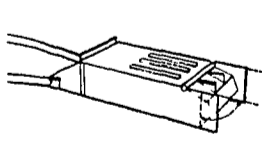
The new Patz Slurry Pump can move slurry and liquids up to 150 feet. The manure is supplied to an underground hopper with a gutter cleaner or scraper and is forced into a 12 inch P V C pipe by means of an 8 inch by 15 inch plunger



A 10 hp electric motor running a roller chain reduction unit drives the plunger at a rate of 21 strokes per minute. The Patz exclusive roller chain drive unit is the most efficient way to transmit a smooth flow of power.
 (Shown with guard removed)



The 8 inch by 15 inch plunger has a one way valve in the sleeve which closes on the forward stroke forcing the manure into the storage facility and opens on the backward stroke for the next load



Plunger sleeve can be removed from sleeve chamber for servicing without breaking out concrete. Valve in the sleeve and flapper valve at the end of the pipe prevent manure from returning

get the PATZ FACTS FIRST

CALL
TERRE HILL - (215) 445-6736
 OR SALESMAN
JAMES EBSHSHADE
 717-464-2090

South Branch Angus win at York

YORK — In a contest which featured several top contenders for top honors in the York Fair's Angus Breeding Show, South Branch Farm of York ended up with the junior, senior, and grand champion honors. Erdenheim Farm of Lafayette Hill placed second in each of those championship races. Following are the results by class:

Junior heifer calves - 1. Christine Shive, 2. Christine Shive. Late Summer yearling heifer - 1. William Wise. Early Summer yearling heifer - 1. David Wise (Summer Champ), 2. Erdenheim Farms (Reserve Summer Champ.)

April junior yearling heifer - Christine Shive, 2. Erdenheim Farm, 3. Chris Kinsley. March junior yearling heifer - South Branch Farm, 2. Ralph Dixon Jr., 3. Erdenheim Farm. Early junior yearling

heifer - 1. Erdenheim Farm, 2. Tim Kinsley.

In bull calf classes, Erdenheim dominated the first four classes completely, relinquishing their stronghold only after the Summer yearlings entered

the ring. Hidden Lane Farm swept the two yearling classes, as Erdenheim Farm went on to be named owner of both the grand and reserve grand champion bulls. Erdenheim then continued to win each of the group bull classes.

Turnpike auction set

HARRISBURG — Items ranging from dump trucks to nuts and bolts will be available at the Pennsylvania Turnpike Commission's public auction of surplus, used vehicles and equipment on September 20, at 10 a.m.

The annual event will be conducted on the old Harrisburg-East Interchange roadway adjacent to the Administration Building. Clayton C.

Kleinfelter, Jr. of Lebanon will serve as auctioneer.

Nearly 200 items of equipment will be sold, including dump trucks, snow plows, tar kettles, air compressors, front-end loaders and a flatbed trailer. Smaller items include auto parts, lawn mowers, traffic cones, chain saws, typewriters and other office equipment. A complete list of items at the auction will be available immediately prior to sale time along with terms and conditions of sale.

All auction equipment may be inspected on September 18, and September 19, from 9 a.m. to 4 p.m. and at 9 a.m. on September 20, 1978 prior to sale.

Additional information on the auction is available through William Cornelius, Director Purchases, (717-939-9551, Extension 351).

SERVING THE FARMERS
 FOR 105 YEARS



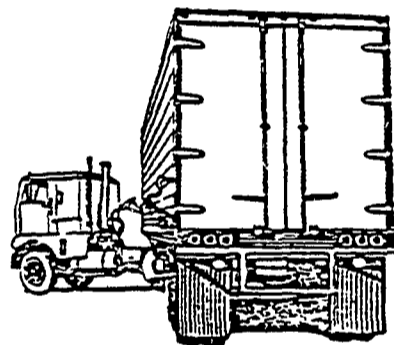
**HAMBURG SAVINGS
 and
 TRUST COMPANY**

Hamburg, PA — Phone 215-562-3811
 A FULL SERVICE BANK

TRUCKLOAD OF SAVINGS



**INTERNATIONAL
 HARVESTER**



**SAVE
 UP TO 30% OFF REG. PRICES**

- MOLDBOARDS
- LANDSIDES
- PLOW SHARES

While
 Supply Lasts

**WE ALREADY KNOW THAT THIS WINTER'S
 TRUCKLOAD PRICES WILL BE CONSIDERABLY
 HIGHER, SO CHECK YOUR NEEDS, CHECK OUR
 PRICES, & PICK UP YOUR REQUIREMENTS NOW!**

**GENUINE INTERNATIONAL
 AMERICAN MADE**

SWOPE & BASHORE, Inc.

RD 1, Myerstown, Pa.
 Located 1 Mile S. of Int 78 & 6 Miles
 N. of Myerstown on Rt. 645 in Frystown
 PHONE: 717-933-4138